

The Oregon Environmental Justice Mapping Tool is a tool being developed for state agencies to help them identify communities traditionally unrepresented in government processes and harmed by environmental and health hazards.

This tool can potentially influence how agencies target community engagement, develop new programs, and consider how to allocate resources to communities.

This brochure will share information about how the Oregon Environmental Justice Mapping Tool is being developed and how Oregon community concerns are informing development.

The intended audience for this brochure includes new Environmental Justice Council members, other Oregon boards, commissions, and council's who are interested in an Oregon environmental justice mapping tool, the Oregon Legislature, state staff, and the public.

### **Oregon Environmental Justice Mapping Tool at a Glance**

**Primary Users:**  
**State Agencies**

**Decision Maker:**  
**Oregon Environmental  
Justice Council**

**Due Date:**  
**12/31/2027**

**Purpose:**  
**Identify environmental  
justice communities for  
state agencies to consider  
for agency programs and  
funding**

[Oregon House Bill 4077](#) was passed in 2022, and it created the Oregon Environmental Justice Council and the requirement to develop an Oregon environmental justice mapping tool. The Environmental Justice Council is a governor's advisory council that is responsible for the tool's development and

implementation. The Environmental Justice Mapping Tool is expected to implement by December 31, 2027.

House Bill 4077 also defines environmental justice community.

“Environmental justice community” includes communities of color, communities experiencing lower incomes, communities experiencing health inequities, tribal communities, rural communities, remote communities, coastal communities, communities with limited infrastructure and other communities traditionally underrepresented in public processes and adversely harmed by environmental and health hazards, including seniors, youth, and persons with disabilities.

There are four processes that are part of the decision-making process:



**Decision Points**



**Listening Sessions**



**Community Survey**



**EJ Mapping Tool  
Implementation  
Guidance**

EJ Mapping Decision Points: Key recommendations for environmental justice mapping tool development are considered through ten decision points.

They include:

1. Decision Point 1: Indicator Domain Selection
2. Decision Point 2: Geographic Units
3. Decision Point 3
  - a. 3a: Geographic Designations
  - b. 3b: Community Comparisons
4. Decision Point 4: Weighting Methods
5. Decision Point 5: Domain Aggregation
6. Decision Point 6: Data Standardization
7. Decision Point 7: Indicator Selection
  - a. Inclusion Criteria
  - b. Initial Indicator Inventory
  - c. Final Indicator Inventory
8. Decision Point 8: Sensitivity Analysis
9. Decision Point 9: Community Thresholds
10. Decision Point 10: Visualizations & Reporting

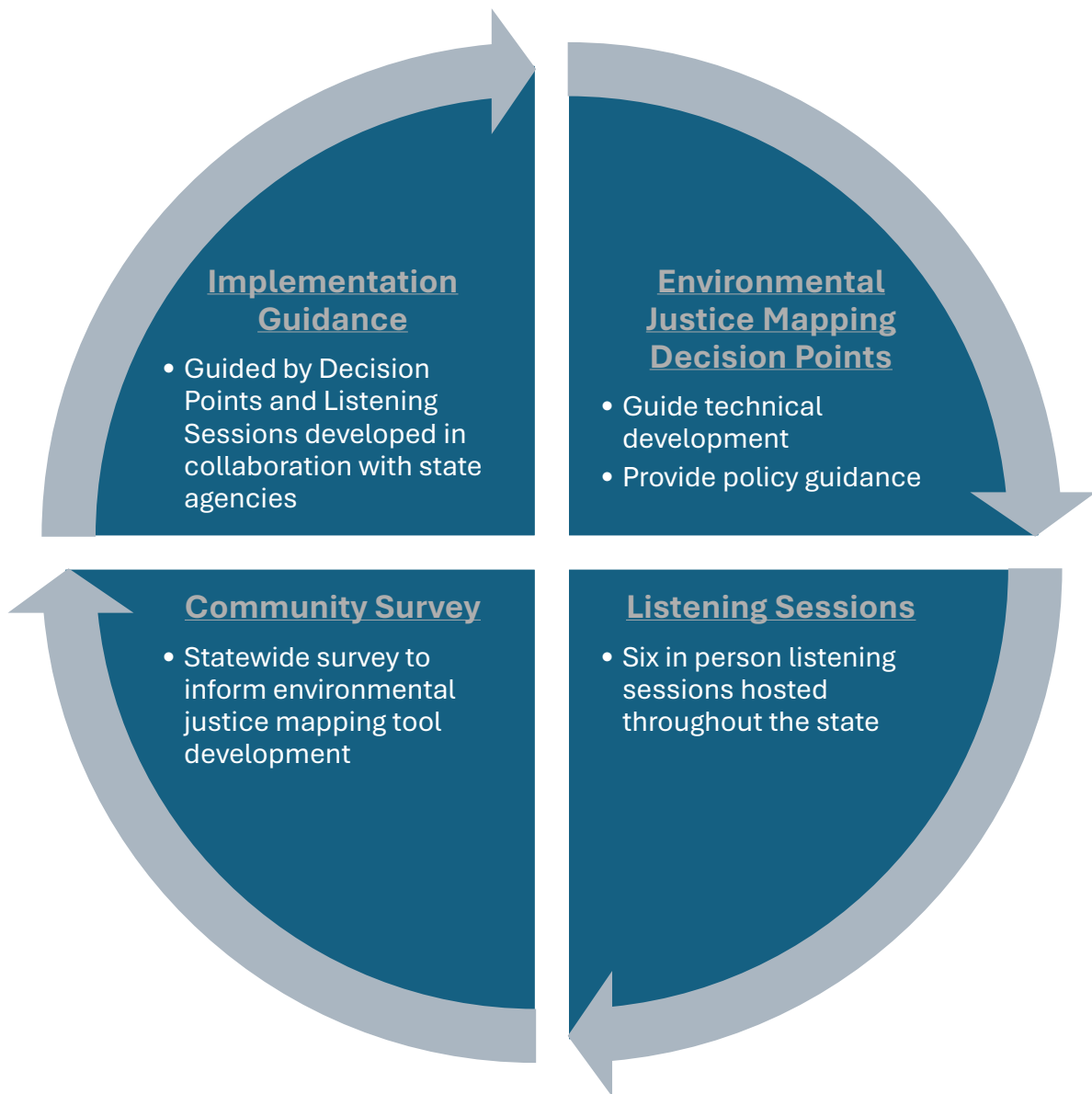
The adopted decision point recommendations are available on the [Environmental Justice Council website](#).

Listening Sessions: Six in person listening sessions will be hosted throughout Oregon to inform development of the Oregon Environmental Justice Mapping Tool. Registration information for these events will be posted on the [Environmental Justice Council website](#).

Community Survey: Oregon communities also have the opportunity to provide information to inform development through at least one community survey. The survey will also be available on the [Environmental Justice Council website](#).

Implementation Guidance: The Oregon Environmental Justice Council will also develop statewide guidance in partnership with state agencies to help agencies use the Environmental Justice Mapping Tool for potential policy guidance, program development, and funding decisions.

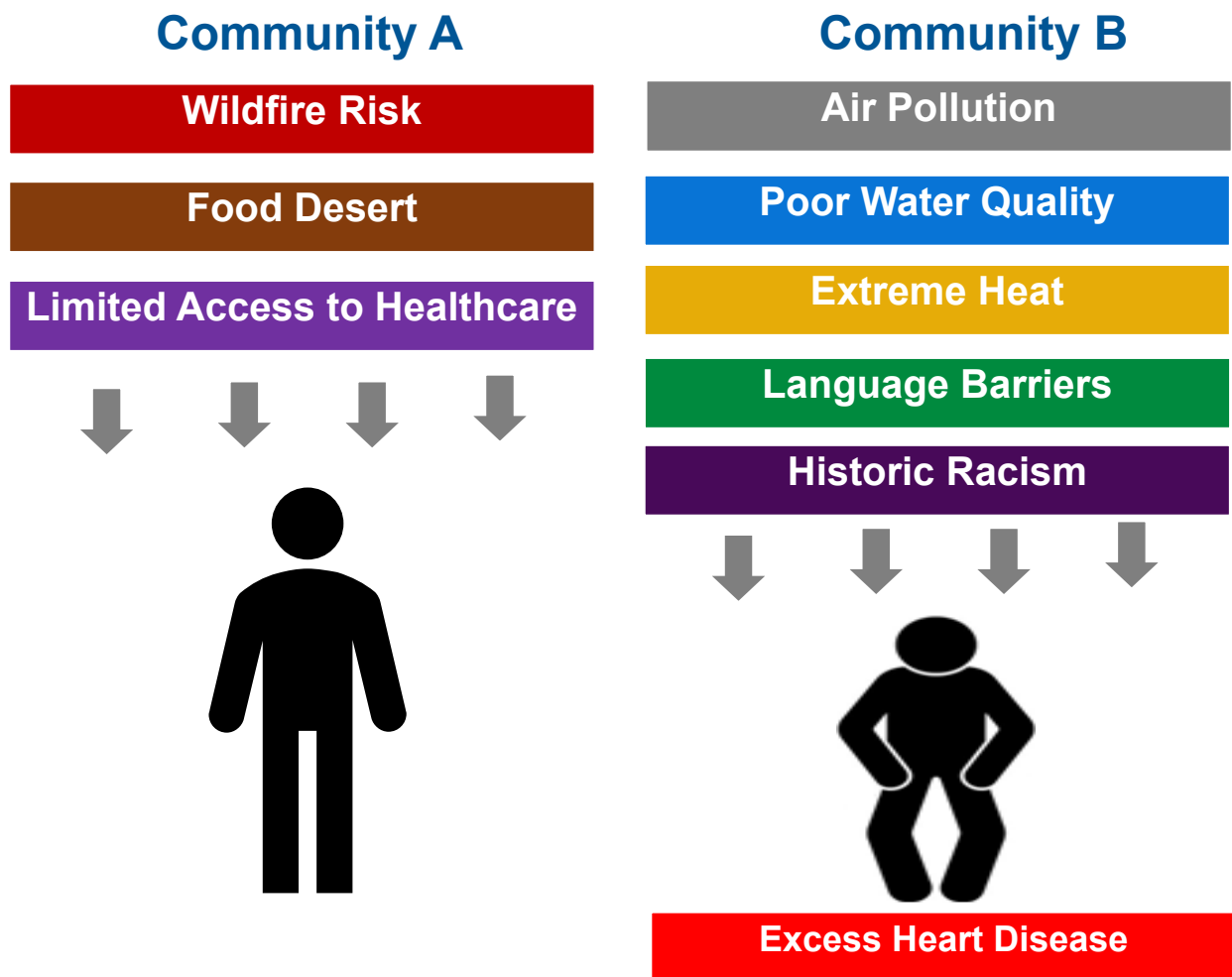
The Environmental Justice Mapping Decision Points, Listening Sessions, Community Survey, and Implementation Guidance are interconnected all all these processes will help the Environmental Justice Council make decisions relating to the Environmental Justice Mapping Tool.



Cumulative Impacts are a related concept to consider when thinking about the impacts of living in an environmental justice community.

Cumulative Impacts HHS (2022):

“The total harm to human health that occurs from the combination of environmental burden such as pollution and poor environmental conditions, pre-existing health conditions, and social factors such as access to quality healthcare.”



More information about the Oregon Environmental Justice Council and the Environmental Justice Mapping Tool project is available on the [Environmental Justice Council website](https://www.oregon.gov/policies/pages/environmental-justice-council.aspx):

<https://www.oregon.gov/policies/pages/environmental-justice-council.aspx>