

Governor's Housing and
Homelessness Initiative

February 23, 2023



Housing and Homelessness (Early Actions)

- EO 23-02: State of Emergency Related to Homelessness
- Governor's Recommended Budget (GRB)
- EO 23-03: Directing State Agencies to Prioritize Reducing Homelessness
- EO 23-04: Establishing a Statewide Housing Production Goal and Housing Production Advisory Council

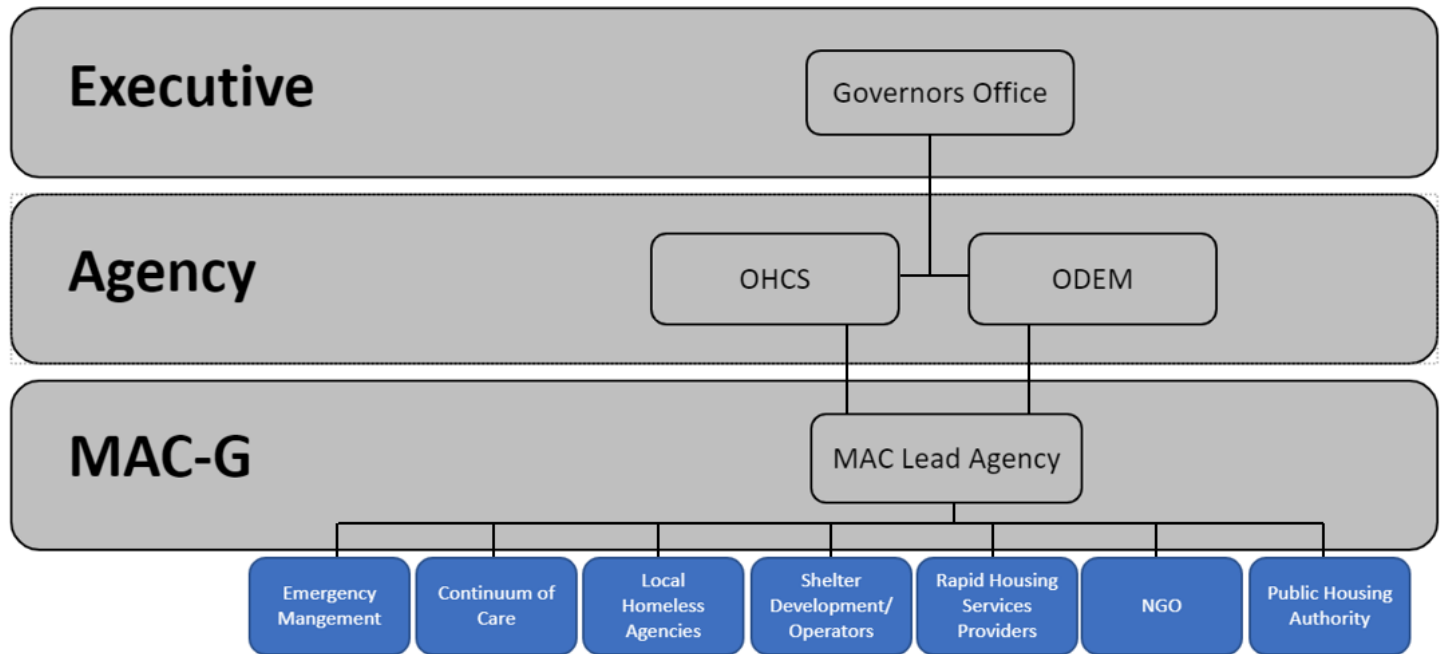
EO 23-02 – Homelessness Emergency

- Establishes a homelessness state of emergency in continuums of care that experienced an increase in unsheltered homelessness of 50% or more between 2017-2022

Continuum of Care/Region	Counties	Change in Unsheltered Homelessness (2017-2022)
Metro		50.3%
	<i>Multnomah</i>	83%
	<i>Washington</i>	-38%
	<i>Clackamas</i>	-5%
Central Oregon		86%
	Jefferson	200%
	Crook	20%
	Deschutes	83%
Eugene, Springfield/Lane County		110%
	<i>Lane</i>	110%
Medford, Ashland/Jackson County		132%
	<i>Jackson</i>	132%
Salem/Marion, Polk Counties		150%
	<i>Marion</i>	153%
	<i>Polk</i>	123%

EO 23-02 – MAC Groups

- A MAC group is for:
 - Interagency management, planning, and coordination
 - Operational leadership to provide strategic coordination
 - Identifying resources, and managed goals



EO 23-02 – Racial Equity

- Community plans submitted by MAC must include demographic data on local disparities;
- MAC strategies must center race/equity;
- Funding to support capacity of culturally specific organizations in implementation of EO 23-02 and in Gov’s budget;

Table 2: Oregon Population, Poverty, and Overall Homelessness by Race and Ethnicity

RACE	TOTAL POPULATION	POVERTY	HOMELESSNESS
White	84.4%	78.8%	81.3%
Black	1.9%	3.7%	5.7%
Asian	4.4%	4.5%	0.8%
American Indian or Alaskan Native	1.1%	1.9%	4.9%
Native Hawaiian or Other Pacific Islander	0.4%	0.6%	1.1%
Multiracial or Other	7.8%	10.4%	6.2%
ETHNICITY			
Not Hispanic or Latinx	87.0%	80.2%	90.6%
Hispanic or Latinx	13.0%	19.8%	9.4%

Data Source: ACS 2019 5-year Data and 2020 Point-in-Time Count

EO 23-02 – Early investment package

- **\$85.2 million to rehouse people experiencing homelessness and expand shelter capacity**
 - Geography: Emergency areas
 - Impact: Rehouse 1,200 households, expand shelter capacity by 600 beds
 - Eligible uses: Rapid rehousing, shelter capital and operations, capacity for culturally responsive organizations, sanitation services
- **\$33.6 million to prevent homelessness**
 - Geography: Statewide
 - Impact: Prevent homelessness for 8,750 households
- **\$26.1 million to rehouse people experiencing homelessness and expand shelter capacity in the 26 rural counties within the Balance of State Continuum of Care**
 - Geography: Balance of State Continuum of Care
 - Impact: rehouse 450 households experiencing unsheltered homelessness; expand state's shelter capacity by 100 beds
 - Eligible uses: rapid rehousing, shelter capital and operations, capacity for culturally responsive organizations, sanitation services
- **\$5.2 million for emergency management response and to distribute Balance of State resources (OHCS and ODEM)**
- **\$5 million direct allocation to federally recognized Tribes**
 - Geography: Statewide
 - Impact: Address homelessness needs of Tribal members
- **\$200,000 to develop a proposal for a long-term rent assistance program**
 - Geography: Statewide
 - Impact: Begin work to establish a long-term rent assistance program in the state to serve the unsheltered households being rehoused through the emergency order to ensure long-term housing stability.

Key Dates



EO 23-03 – State agency direction

- This order directs state agencies to prioritize preventing and reducing homelessness statewide
- Each agency shall provide an initial report to the Governor no later than March 31, 2023 describing the processes and procedures that is has available to expand low-barrier shelter, and reduce or prevent homelessness
- RJC sub provided feedback on questions to agencies, will review template report, and will receive agency responses/provide feedback on gaps and opportunities

EO 23-04 – Housing Production

- This order established a 36,000 annual statewide housing production target
- Creates a Housing Production Advisory Council tasked with developing comprehensive recommendations to achieve this target (appointments forthcoming)
 - Focus on AFFH
- Council plan framework: April 1, 2023
- Council action plan: December 31, 2023

GRB

Rehouse people experiencing homelessness and prevent homelessness in the longer-term statewide

Rehouse and maintain housing stability for Oregonians moving out of unsheltered homelessness

\$172.2 M: In addition to the early investment package, this funding includes both rapid rehousing resources and then connecting households to long-term rent assistance after their first 12 months in housing if they need it to maintain housing stability. This reflects the state's first investment in an on-going, long-term rent assistance program.

On-going homelessness prevention

\$73 M: Build on the one-time investment in the early investment package and create an on-going homelessness prevention program in Oregon.

Maintain shelter operations

\$24.1M: This investment will maintain shelter operations in the state, including the operation of the 600 new shelter beds created through the early investment package and Project Turnkey projects.

Permanent Supportive Housing Risk Mitigation Fund

\$4.5 M: Permanent supportive housing providers, who serve people who have experienced homelessness, are experiencing spiraling insurance cost increases and the risk of potentially losing their insurance. This fund will help to manage the risk of Permanent Supportive Housing providers to support on-going access to affordable insurance.

On-going Coordinated Emergency Response

\$5.3 M: Continue supporting the emergency response coordinated by ODEM and OHCS.

New permanent, supportive housing

\$130 M: Create new units of permanent supportive housing (PSH), and maintain the rent assistance and services needed for successful PSH.

Build and preserve more housing units statewide

New affordable housing (rental and homeownership)

\$770 M: General obligation bonds to build more affordable homes for both renters and new homeowners.

Affordable housing preservation

\$118 M: Lottery and General Fund to preserve existing affordable homes, including manufactured homes.

Manufactured housing

\$4 M: Support the replacement of old and inefficient manufactured homes to provide safe and energy efficient homes for households.

Housing Production and Accountability Office (HPAO)

\$2.20 M: The Department of Consumer and Business Services (DCBS) and the Department of Land Conservation and Development (DLCD) will jointly manage a new office to provide technical assistance and support local governments and housing developers. The new office, called the Housing Production and Accountability Office (HPAO), will aim to reduce land use and permitting barriers that stand in the way of building more housing. HPAO will also hold local jurisdictions accountable to state housing and land use laws to clear the path to increased housing production in cities and counties across the state.

Increase homeownership

Homeownership Development (Community Land Trusts)

\$5 M: Community land trusts are a model of homeownership that supports permanent affordability of the home.

Down payment assistance

\$13.6 M: To support homeownership for more families

Capacity building and language access

\$9.4 M: Improve community access to housing support by funding language access needs, training opportunities, and technical assistance at OHCS and expanding partnerships with culturally responsive, community-based organizations and Tribal partners.

Resources to Oregon Tribes

\$5 M: There are nine sovereign tribal nations in Oregon and these resources will support the Tribes in responding to the impacts of the housing and homelessness crisis.