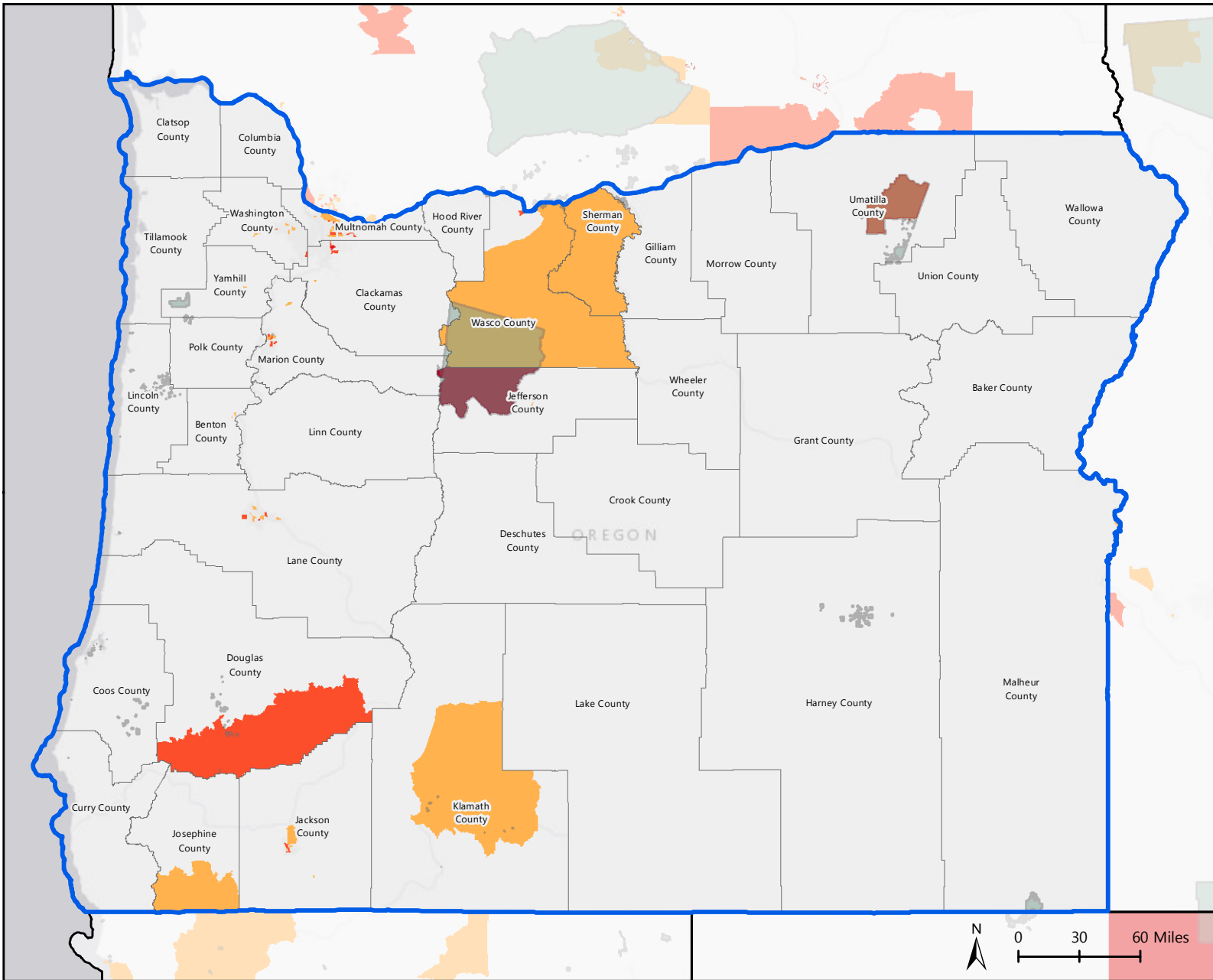


CENSUS 2020

HARD-TO-COUNT COMMUNITIES IN OREGON

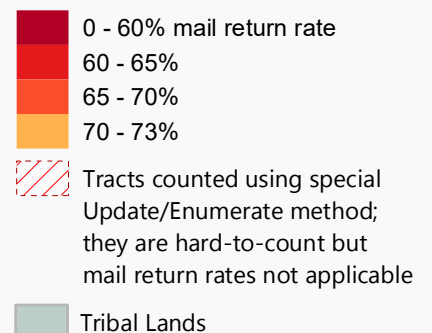


In the 2010 decennial census, **79.8% of Oregon's households mailed back their questionnaire, requiring more costly and difficult in-person follow up from the Census Bureau to count the remaining 20.2%.**

Based on the latest census estimates, **approximately 10% of Oregon's current population (or 388,165 people) lives in hard-to-count neighborhoods**, shaded in **light orange to dark red** on the map. (These are census tracts where almost a quarter or more households did not mail in their census questionnaire in 2010.) Without higher self-response, more households in these and other neighborhoods in Oregon are at risk of being missed in the 2020 census.

Hardest to Count (HTC) Tracts in the Nation

Tracts with 2010 mail return rates of 73% or less (in the bottom 20 percent of return rates nationwide) are shaded on the map. Tracts with >73% return rate are not displayed.



HTC 2020

<https://www.CensusHardtoCountMaps2020.us>