



STEM Investment Council

FULL COUNCIL MEETING AGENDA

September 30, 2022
1:00 PM -4:00 PM

[Zoom link](#)

Conference call: 1-669-900-6833 Conference ID: 99734297527#

Persons wishing to testify during the public comment period should email Sydney.G.King@hecc.oregon.gov 12 hours prior.

Times approximate and order of agenda items may vary.

Voting Members:

STEFAN BIRD, *Chair*
BETH ALCOULOU MRE
MARCELINO ALVAREZ
HERB FRICKE
RITA HANSEN
MARV NELSON
LISA POWELL
NIKKI SALENGER
PAUL STEWART

Advisory Members:

YOLANDA COLEMAN
MELISSA DUBOIS
KATRINA HULL
PRESTON EAGLEHEART
ANDY GRZESKOWIAK
JESSICA HOWARD
NAGI NAGANATHAN
KYLE RITCHEY-NOLL
SUSAN SHUGERMAN
LELA THIEME
TONG ZHANG

Technical Advisors:

JULIA STEINBERGER
Interim Director, Office of Workforce Investments
KURT TACKMAN
Deputy-Director, Office of Workforce Investments

STEM Staff:

SYDNEY KING
Board Administrator

Standing Business

1:00	1.0	Preliminary and Organizational Business	
	1.1	Overview of Agenda and Welcoming Remarks	Chair Bird
1:05	2.0	Public Comment	
		<i>Each individual/group will have time limit of three minutes</i>	
1:10	3.0	Consent Agenda	
		ACTION ITEM: Approve March 20, 2021 STEM Investment Council Minutes	
1:15	4.0	Director (OWI) Report	
	4.1	Update from OWI Director	Julia Steinberger
1:25	5.0	Oregon Department of Education Updates	
	5.1	Legislative, Budget Update, and Mathways	Alexa Pearson, Deb Bailey, Kama Almasi
	5.2	WRAP Grant and Governor's Computer Science Initiative	Beth Blumenstein, Ken Greenbaum

Alignment and Partnerships

2:00	6.0	Oregon STEM	
		Update from Oregon STEM	Deb Mumm-Hill
2:50		BREAK	
2:55	7.0	STEM Hub Updates	
	7.1	Southern Oregon STEM Hub	Karla Clark
	7.2	Mid-Valley STEM	Sarah Whiteside
3:25	8.0	STEM Legislative Report	
	8.1	Discussion	Alexa Pearson

Adjourn

STEM Investment Council

FULL COUNCIL MEETING

Voting Members:

STEFAN BIRD, *Chair*
 BETH ALCOULOU MRE
 MARCELINO ALVAREZ
 HERB FRICKE
 RITA HANSEN
 MARV NELSON
 LISA POWELL
 NIKKI SALENGER
 PAUL STEWART

Advisory Members:

YOLANDA COLEMAN
 MELISSA DUBOIS
 KATRINA HULL
 PRESTON EAGLEHEART
 ANDY GRZESKOWIAK
 JESSICA HOWARD
 NAGI NAGANATHAN
 KYLE RITCHEY-NOLL
 SUSAN SHUGERMAN
 LELA THIEME
 TONG ZHANG
 ANDREW LATTANNER

Technical Advisors:

JULIA STEINBERGER
*Interim Director, Office of
 Workforce Investments*
 KURT TACKMAN
*Deputy-Director, Office of
 Workforce Investments*

STEM Staff:

SYDNEY KING
Board Administrator

March 30, 2022
 1:00 PM -4:00 PM

MEETING MINUTES

Members Present: Stefan Bird (Chair), Beth Alcouloumre, Herb Fricke, Paul Stewart

Advisory Members Present: Katrina Hull, Nagi Naganathan, Kyle Ritchey-Noll, Susan Shugerman, Andrew Lattanner

Guests and Presenters Present: Deb Bailey, Beth Blumenstein, David Melville, Jarvez Hall, Kristen Harrison, Martha, Melissa Dubois, Myronda Schiding, Alexa Pearson, Sarah Whiteside, Stefanie Holloway, Mark Freed, Jerian Abel, Carleen Drago, Emily Coleman, Gwen,

Staff Present: Sydney King, Julia Steinberger, Eleni Collins

Standing Business

1.0 Preliminary and Organizational Business

1.1 Chair Bird welcomed the meeting attendees and began the meeting at 1:03pm.

2.0 Public Comment

No public comment.

3.0 Consent Agenda

ACTION ITEM: Approve October 29, 2021 STEM Investment Council Minutes, approve July 30, 2021 Minutes.

Paul made a motion to approve both meeting minutes, Nikki seconded the motion, none opposed, none abstained. Motion passed, minutes approved.

4.0 Interim Director (OWI) Report

4.1 Julia Steinberger gave a verbal report on Future Ready Oregon. Highlights below:

- Please contact Julia directly with specific questions.
- Leveraging Current Success:
 - Investments into LWDB \$35M
 - Postsecondary Career Pathways \$15M
 - Scaling up Registered Apprenticeship \$20M
 - Expanding Youth Re-engagement \$10.5M
 - Supporting Credit for Prior Learning \$10M
- Three new programs:
 - Workforce Ready Grant \$95M
 - Workforce Benefits Navigator \$10M
 - Statewide Industry Consortia \$1M

Discussion:

Question: How would you frame this for STEM?

Response: Some STEM Hubs work closely with the local workforce boards, and that would be a good avenue.

Question: Was construction called out as this in a focus?

Response: It was originally a target industry, it ended up not being an area of focus in the final bill.

Comment: Diverse populations are called out as intentional engagement, but not the sole targeted populations.

Question: Are CBOs a part of this?

Response: Yes, they are called out as a key part of the bill.

Voting Members:

STEFAN BIRD, *Chair*
BETH ALCOULOU MRE
MARCELINO ALVAREZ
HERB FRICKE
RITA HANSEN
MARV NELSON
LISA POWELL
NIKKI SALENGER
PAUL STEWART

Julia then gave an update on Oregon Youth Works. Highlights below:

- In the last long session, OWI received funding for 2 new youth employment programs
- Just completed process of reviewing applications, money should be out the door in the next few months
- A new wildfire resiliency youth employment program recently was reviewed, and dollars will be released shortly.

Advisory Members:

YOLANDA COLEMAN
MELISSA DUBOIS
KATRINA HULL
PRESTON EAGLEHEART
ANDY GRZESKOWIAK
JESSICA HOWARD
NAGI NAGANATHAN
KYLE RITCHEY-NOLL
SUSAN SHUGERMAN
LELA THIEME
TONG ZHANG
ANDREW LATTANNER

5.0 Oregon Department of Education Updates

5.1 Legislative and Budget Update
Deb Bailey, Tom Thompson

Discussion:

Comment: The education system workers are exhausted and spread thin from the pandemic.

Comment: ODE is working on adding more coherence for districts. There are opportunities from COVID that was learned from.

Question: Do you sense people are excited about these opportunities?

Comment:

5.2 Beth Blumenstein gave an update on the Well Rounded Access Program (WRAP) Grant. Highlights below:

- Grounded in equity, just because something is available, doesn't mean it is equitable
- The program is seeing successes across the state
 - 91% HS students attend a school with a computer science course
 - 80% attend a school with an engineering or technology course
- Expanding course development, course access and communication efforts

Technical Advisors:

JULIA STEINBERGER
*Interim Director, Office of
Workforce Investments*

KURT TACKMAN
*Deputy-Director, Office of
Workforce Investments*

Discussion:

Question: Access is not the same as engagement or participation, how do you measure actual engagement? How does the grant look at that data and engage students?

Comment: Not able to get that data. Did have a conversation with folks, did hear back from partners that a lot of students are not engaged.

Question: Students are dealing with identity and gaslighting issues. Does the data you're gathering take microaggressions into account?

Comment: That hasn't been a part of the conversation yet, but will take into consideration.

Question: Who is getting this information?

Comment: This is something we have heard, and don't currently have a plan in place.

STEM Staff:

SYDNEY KING
Board Administrator

Alignment and Partnerships

6.0 STEM Investment Council Past, Present, Future

Comment: High level: pleased to see additional resources invested in sustainability and Infrastructure. Remain concerned on lack of ability to monitor data, about rural/urban divide and burnout. Concern on accountability of how things are spent. Significant never before seen crises in healthcare. Investment in STEM programs is the only future looking solution.

Comment: The challenges in the STEM arena have escalated.

Comment: Importance around the work the Hubs are doing to build the talent supply.

Voting Members:

STEFAN BIRD, *Chair*
BETH ALCOULOU MRE
MARCELINO ALVAREZ
HERB FRICKE
RITA HANSEN
MARV NELSON
LISA POWELL
NIKKI SALENGER
PAUL STEWART

Advisory Members:

YOLANDA COLEMAN
MELISSA DUBOIS
KATRINA HULL
PRESTON EAGLEHEART
ANDY GRZESKOWIAK
JESSICA HOWARD
NAGI NAGANATHAN
KYLE RITCHEY-NOLL
SUSAN SHUGERMAN
LELA THIEME
TONG ZHANG
ANDREW LATTANNER

Technical Advisors:

JULIA STEINBERGER
*Interim Director, Office of
Workforce Investments*
KURT TACKMAN
*Deputy-Director, Office of
Workforce Investments*

STEM Staff:

SYDNEY KING
Board Administrator

There is no shortage of opportunities.

Question: Is the STEM Plan missing something?

Comment: Post-secondary isn't a part of the grants, and that is a concern. There is a short term need that the economy is facing, but the long term needs elementary interested.

Comment: Need to keep an eye on the quality of output.

Comment: How do we market this to students? Need a little bit of forward and back. Really appreciate administrative training.

7.0 Oregon STEM

7.1 Deb Mumm-Hill and Kyle Ritchey-Noll gave an update on Oregon STEM. Highlights below.

- Deb-Mumm-Hill will be accepting another job, and Kyle will be taking over her position with Oregon STEM.
- Been working on strategic planning, and currently on track
- Contracted with X-Plane to help with strategic planning work
- Fundraising efforts have been successful

BREAK

8.0 STEM Hub Updates

8.1 Stefanie Holloway and David Melville gave an overview of their STEM Hub, GO STEM. Highlights below:

- GO STEM is in Eastern Oregon
- Chief Science Officer program, 4 schools currently participating
- Camp Invention Summer Camp – grades 3-5, 59 campers, looking to expand across the region, with interest in 5-6 communities
- Sent out STEM Kits – sent 160 camp innovation STEM kits to 7th graders
- Send 2,300 kits to fourth grade students
- Explore Science Club was developed in response to COVID by way of YouTube videos, connects STEM careers and matching them with a STEM based lesson that matched the career
- STEM Stays Here helps students transition into the workforce

Adjourned at 3:22pm.



STEM Investment Council Update
September 30, 2022

Vision Map Narrative Flow

Guidelines on who to share the **Vision Map** with:

- Learners
- Families/caregivers
- Teachers
- School Administrators
- Hub Advisory Boards
- Community Partners
- State Policy Makers
- Industry Partners
- Donors

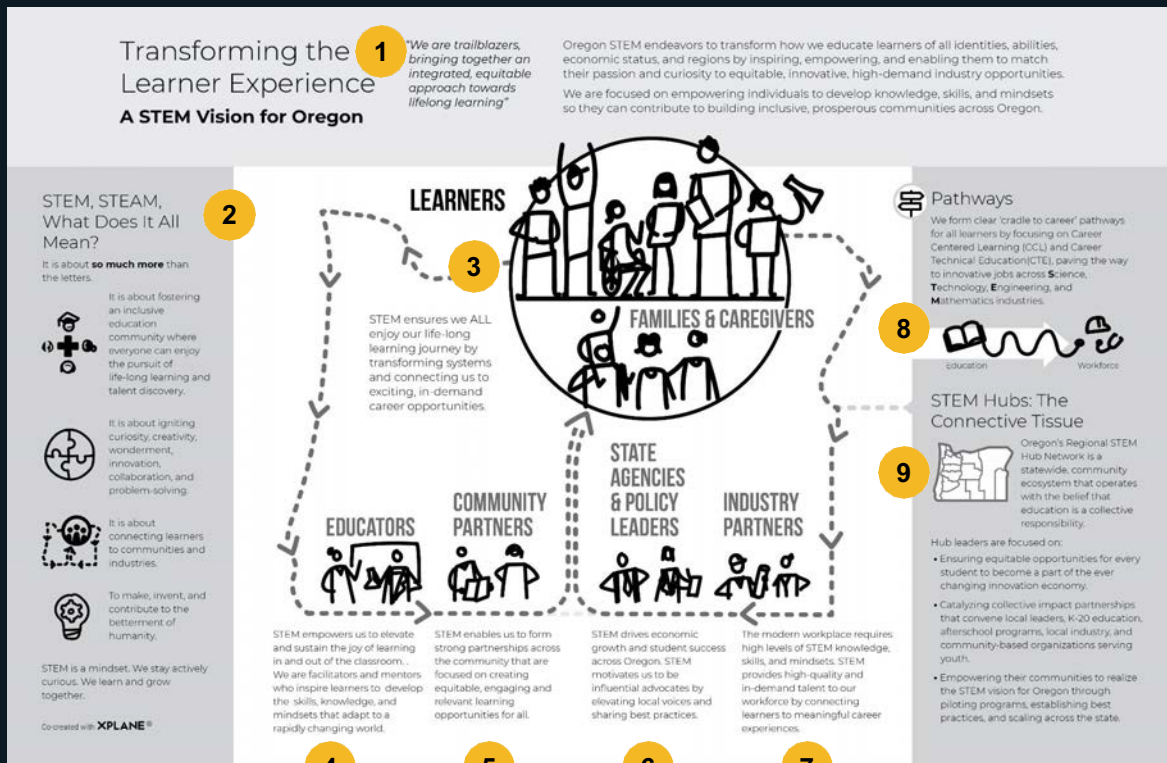
As you share the map, follow this recommended flow, layering in your own speaking points. Emphasize certain areas of the map and add additional details/context based on your audience and what is most relevant to them.

1. STEM Vision for Oregon – the *what & why*
2. STEM- common language
3. Learners – front and center

Groups that support the learners:

4. Educators (in school and out of school)
5. Community Partners
6. State Agencies & Policy Leaders
7. Industry Partners
8. Pathways
9. STEM Hubs

Vision Map—Blueprint



Strategy Map Narrative Flow

Guidelines on who to share the **Strategy Map** with (all groups will see the Vision Map, but only these groups should see the Strategy Map as well:

- Hub Advisory Boards
- School Administrators
- State Policy Makers
- Industry Partners
- Donors
- Teachers (if appropriate)

As you share the map, follow this recommended flow and layer in your own speaking points. Emphasize certain areas of the map and add additional details/context based on your audience and what is most relevant to them.

1. 'Strategic Priorities' goal statement – the *how*
2. 'STEM Vision' statement (same as Vision Map)
3. Learners – central/priority on both maps
4. Awareness Campaign

Strategic Priorities:

5. Systems Alignment
6. Partnerships & Integration
7. Measure what Matters

Strategy Map—Concept

