

Housing Model Codes



The Oregon Legislature directed the Housing Accountability and Production Office (HAPO) to create model codes that cities may choose to adopt to support the development of housing. These optional model codes are designed to make implementation of housing laws easier for local governments and production easier for developers.

There are three model codes based on city population size:

- Small cities with a population less than 2,500
- Medium cities with a population of 2,500 or greater and less than 25,000
- Large cities with a population of 25,000 and greater

Note: State law considers cities and unincorporated areas in the Portland Metro area and Tillamook County as large cities even if the population is less than 25,000.

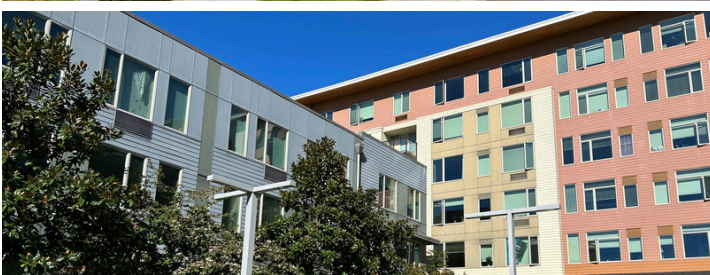
These model codes allow for the construction of four housing types:



Middle Housing



Detached Single-Unit



Multi-Unit



Accessory Dwelling Units (ADUs)

How model codes can help support local production efforts

Model codes are designed to be a useful tool for cities and developers trying to build more housing in their communities. They can be particularly helpful for small cities with limited staff capacity. Model codes:

- **Allow more housing choices** — Cities have the option to adopt all or parts of a model code, giving cities the opportunity to allow more housing options in their communities. When adopted for a given housing type, the code will allow that housing type on any site where city code is applied, with few exceptions. (Exceptions may include environmental or local safety protections). The model codes are broken out into smaller modules with some optional requirements that allow them to be customized to suit the city's needs.
- **Support local compliance with the law** — Over the past several years, the Legislature has adopted many new laws that can be challenging to keep up with on the ground. To comply with these new laws, cities can adopt amendments to their local code, or they can apply model codes directly to development applications. Model codes give cities the option to implement new laws without going through the process of amending local code. HAPO will update the model codes over time to maintain statutory compliance.
- **Make production in communities easier** — These model codes are designed to make development requirements flexible, while also encouraging important goals such as affordable and accessible housing. The model code includes streamlined development requirements and review processes, which cities can use to encourage these outcomes at the local level.

See DLCD's Model Code webpage for more information.

- [Small Cities Housing Model Code](#)
- [Medium Cities Housing Model Code](#)
- [Large Cities Housing Model Code](#)
- [Housing Model Code Implementation Guidance](#)



Questions? Contact the Housing Accountability and Production Office.

 503-373-0050

 dlcd.hapo@dlcd.oregon.gov

 <https://www.oregon.gov/lcd>