



Oregon

Tina Kotek, Governor

Department of Land Conservation and Development

635 Capitol Street NE, Suite 150

Salem, Oregon 97301-2540

Phone: 503-373-0050

Fax: 503-378-5518

www.oregon.gov/LCD

March 6, 2024

To: Eastern Oregon Solar Opportunities Rulemaking Advisory Committee Members

From: Brenda Ortigoza Bateman, Ph.D., Director
Gordon Howard, Community Services Division Manager
Adam Tate, Renewable Energy Planner



Re: Materials for March 12, 2024 Rulemaking Advisory Committee Meeting #1

Dear Rulemaking Advisory Committee (RAC) Members,

Thank you for your commitment to this important effort. Attached, please find the meeting agenda and some background materials.

As RAC members, you should have a Zoom meeting link in your calendar invite to join the meeting. We invite everyone else to watch via the live stream on DLCD's YouTube channel [here](#). This link is also published on the agenda and on the project [webpage here](#).

We are pleased that Vice Chair Nick Lelack will be our liaison to the Land Conservation and Development Commission (LCDC or "commission"). We will have six RAC meetings, four of which will be in person in Eastern Oregon over the coming months.

By providing these materials in advance of the meeting, we are hoping you can review the materials before we are together.

Please contact Casaria Taylor at 971-600-7699, Casaria.taylor@dlcd.oregon.gov for meeting support. These materials will also be posted on the [project webpage](#). We look forward to meeting with you on Tuesday!

Packet Contents:

1. Meeting Agenda
2. RAC Membership
3. Committee Charge and Charter
4. Staff and Consultant Bios
5. Breakout Questions for the First Meeting
6. Maps



Eastern Oregon Solar Siting Rulemaking Advisory Committee First Meeting Agenda



March 12, 2024

Meeting 10:00 AM – 1:30 PM

Tour 2:00 – 4:00 PM

This meeting will be hosted at the Christmas Valley Booster Building, located at 86962 Aspen lane, Christmas Valley, Oregon. If you are unable to make it in person, you can attend the meeting virtually through Zoom Webinar. Please contact Casaria Taylor if you have not already received this link.

There will be an optional Tour which will depart from the Christmas Valley Boosters Building at 2:00 pm PT and return to the Christmas Valley Boosters Building around 4:00. The tour is intended to demonstrate characteristics of northern Lake County and will include stops to view approved and developed photovoltaic solar power generation facilities. DLCD will provide two passenger vans travelling to Christmas Valley from the Bend/La Pine area for the purposes of the tour and any carpooling that may be possible.

Public Outreach Event

DLCD will be hosting an open house style Public Information Session on Monday, March 11, 2024, from 5:00 – 7:00 pm PT at the Christmas Valley Boosters Building located at 86962 Aspen Lane, Christmas Valley, Oregon.

The meeting will also be livestreamed at the Department of Land Conservation and Development's (DLCD) YouTube page: <https://youtube.com/@OregonDLCD>. The link after the meeting, and other materials will be posted to DLCD's Rulemaking page on <https://www.oregon.gov/lcd/LAR/Pages/eosolar.aspx>. To share written public comment with staff and the members of the Rulemaking Advisory Committee (RAC), please submit written comments to adam.tate@dlcd.oregon.gov. Staff will share any comments received three working days before the meeting with committee members.

This meeting will be hosted online. A request for an interpreter for the hearing impaired or for other accommodations for persons with disabilities should be made at least 48 hours before the meeting to Casaria Taylor at (971) 600-7699, casaria.taylor@dlcd.oregon.gov, or by TTY: Oregon Relay Services (800) 735-2900. Thank you!

Desired Outcomes:

Shared understanding of RAC responsibilities, objectives, and processes.

Shared understanding of background information relevant to photovoltaic solar power generation facilities siting, including Oregon Renewable Energy Siting Assessment.

Time	Topic	Lead
10:00 – 10:20am	Welcome, Opening Remarks, & Agenda Review	Brenda Ortigoza Bateman, DLCD Director Vice-chair Nick Lelack, LCDC James Williams, Lake County Commissioner Councilmember Les Anderson, Klamath Tribes
10:20 – 10:40am	Presentation: Project Overview	Adam Tate, DLCD Renewable Energy Planner
10:40 – 11:00am	Presentation: Existing Process for Solar Siting	Elaine Albrich, Davis Wright Tremain Law
11:00 – 11:40am	Small Group Discussions: <ul style="list-style-type: none"> • Session 1: What We've heard, is anything missing? • Session 2: To TAC or not to TAC (we think to TAC) 	All
11:40 – 11:50am	Break	All
11:50 – 12:30pm	Small Group Discussions: <ul style="list-style-type: none"> • Session 3: Let's talk community priorities and benefits • Session 4: Thinking about the solar resources and proximity to transmission 	All
12:30 – 1:00pm	Working Lunch (food provided)	All
12:45 – 1:00pm	Charter Review and Approval	Jamie Damon, Kearns & West
1:00 – 1:20pm	Small Group Discussion Report Out	All, DLCD Staff
1:20 – 1:30pm	Closing and Next Steps	Jamie Damon, Kearns & West
1:30pm	Meeting Adjourn	

1:30 – 1:45pm	Optional Break and Transition to Tour Groups	
2:00 – 4:00pm	Optional Solar Tour	

LCDC HB 3409 Solar Rules Advisory Committee, Voting Members

Councilor Les Anderson, The Klamath Tribes	les.anderson@klamathtribes.com
Commissioner James Williams, Lake County	jwilliams@co.lake.or.us
Michael Eng, Lostine Fire Wise	mikeeng@mac.com
F. Steven Knudsen	fskenenergy@threeboys.com
Jack Watson, Oregon Solar+Storage Industries Association	jack@oseia.org
Mark Lindley, Portland General Electric	mark.lindley@pgn.com
Travis Sellers, Pendleton Building and Construction Trades Council.	tsellers@ibew112.com
Jack Southworth, Oregon Cattlemen's Association	jackandteresa@southworthbros.com
Dugan Marieb, Pine Gate Renewables	duganmarieb@pgrenewables.com
Knowledge Murphy, American Farmland Trust	kmurphy@farmland.org
Max Yoklic, New Sun Energy	myoklic@newsunenergy.net
Emily Griffith, Renewable Northwest ¹	emily@renewablenw.org
Max Greene, Renewable Northwest	max@renewablenw.org
Marc Hudson, Oregon Agricultural Trust	marc@oregonagtrust.org
Kimberly Peacher, Department of the Navy	kimberly.peacher@navy.mil
Mike Totey, Oregon Hunters Association	mtotey@oregonhunters.org
Andrew Mulkey, 1000 Friends of Oregon	andrew@friends.org
Thad Eakin, Oregon Wheat Growers League	teswcd@gmail.com
Greg Corbin, Green Diamond Resource Company	greg.corbin@greendiamond.com
Dan Orzech, Oregon Clear Power	dan@oregoncleanpower.coop
Elaine Albrich, Davis Wright Tremain	elainealbrich@dwt.com
Mike W. McArthur, Community Renewable Energy Association	mwm@crearenewables.org
Brandon McMullen, Harney County Planning Director	brandon.mcmullen@harneycountyor.gov
Lauren Poor, Oregon Farm Bureau	lauren@oregonfb.org
Will Van Vactor, Crook County Community Development Director	will.vanvactor@crookcountyor.gov
Andrea Kreiner, Oregon Association of Conservation Districts	andrea.kreiner@oacd.org
Bill Richardson, Rocky Mountain Elk Foundation	brichardson@rmef.org
Laura Tabor, The Nature Conservancy	laura.tabor@TNC.ORG
Denise Stillwell, South Central Oregon Economic Development District	Denise@scoedd.org
Anahi Segovia Rodriguez, Verde	anahisegovia@verdenw.org
April Snell, Oregon Water Resources Congress	aprils@owrc.org

¹ Renewable Northwest has a single member on the Rulemaking Advisory Committee, with one alternate.

**CHARGE ADOPTED BY THE LAND CONSERVATION AND DEVELOPMENT COMMISSION ON
NOVEMBER 2, 2023**

HB 3409, also known as the Climate Omnibus Package, was passed by the Oregon Legislature in 2023. Sections 35- 37 of HB 3409 are titled “Finding Opportunities and Reducing Conflict in Utility Scale Photovoltaic Solar Siting.” These three sections include specific direction to the Land Conservation and Development Commission (commission) to promulgate administrative rules designed to assist counties with siting considerations for utility-scale photovoltaic solar facilities. Section 37(2) calls for the Department to appoint a diverse Rules Advisory Committee (RAC) to help with necessary administrative rule development. The minimum required RAC membership is described in Section 37.(3), and includes representatives from tribes, local governments, renewable energy developers and experts, public utilities, labor, environmental justice, agriculture, environmental protection, forestry, and economic development.

It is intended that the charge will support the RAC’s efforts by serving as an expression of commission expectations. Should there be confusion or disagreement among the RAC, the charge will be looked to for guidance.

CHARGE:

Members of the Rules Advisory Committee (RAC) will provide assistance to agency staff to analyze, draft, and recommend Oregon Administrative Rules (OARs) that faithfully implement the legislative intent and direction outlined in Sections 35 thru 37 of House Bill 3409 (2023 Session). The Land Conservation and Development Commission will consider administrative rules that:

- Are informed by consultation with Tribal Governments regarding how best to protect historic, cultural or archeological resources without revealing sensitive information.
- Are informed by public information sessions to be offered in conjunction with Rule Advisory Committee (RAC) meetings held in Eastern Oregon communities.
- Establish a voluntary “safe harbor” option in OAR chapter 660, division 23 allowing counties to identify preferred locations for siting photovoltaic solar power generation facilities.
- Establish guidance in OAR chapter 660, division 23 for counties that decline using the “safe harbor” option in favor of developing a more detailed local program to identify preferred locations for siting photovoltaic solar power generation facilities.
- Identify that areas considered “significant” for photovoltaic solar power generation for purposes of OAR chapter 660, division 23 are to be designated based on having an adequate estimated Annual Solar Utility-Scale Capacity Factor, and reasonable proximity to transmission, as well as the ability to entirely or substantially avoid other important resources or values.
- Include area selection criteria based on broad consideration of community priorities and benefits. . Among other things, consideration will be given to possible impacts to city growth scenarios, future housing availability, and urbanization strategies."

- Include connectivity of agricultural and forest lands and wildlife habitat areas in its consideration of natural resources and resource lands.
- Include revisions to OAR chapter 660, Divisions 6 and 33 identifying acreage thresholds for photovoltaic solar power generation facilities considered under the newly established provisions of OAR chapter 660, division 23 that are larger than would otherwise be allowable without an exception to Goals 3 or 4.
- Include revisions to any applicable administrative rules are necessary to carry out the mandate of “Finding Opportunities and Reducing Conflict in Utility Scale Photovoltaic Solar Siting.” Applicable rules include, but are not limited to, OAR chapter 660, divisions 4, 6, 23, and 33.
- Include measures designed to mitigate impacts to commercial farming, ranching and forestry activities on lands protected under Goals 3 and 4. Mitigation measures should provide certainty for applicants as well as decision makers.



OREGON

Department of
Land Conservation
& Development

Eastern Oregon Solar Siting Rulemaking Advisory Committee (RAC) Charter

DRAFT February 27, 2024

I. Purpose of the Solar Siting Rulemaking Advisory Committee

At their November 2, 2023, meeting, the Land Conservation and Development Commission directed Department of Land Conservation and Development (DLCD) staff to begin rulemaking to carry out the requirements of Section 35(2), [House Bill 3409](#). The commission's charge includes, among other things, guidance for consulting with Tribal Governments, establishing the RAC, and an expectation that revisions to [OAR Chapter 660](#), Divisions 6, 23, and 33 will be identified for review and amendment. The provisions of OAR Chapter 660, Division 4 may also be considered.

State and commission policy requires that community members, or the public be involved in the drafting of rules. This committee is advisory to the Land Conservation and Development Commission (LCDC). DLCD will livestream the meetings and provide meeting summaries posted to the department's project webpage.

II. Organizational Structure

Membership. According to the commission's charge, RAC membership includes tribal, state, and local government representatives, as well as representatives of conservation, habitat, agriculture, and private and commercial development interests. DLCD staff will provide committee support. According to commission practice, LCDC has appointed a commission liaison to this work.

III. Meetings

Attendance at Meetings. Members are expected to make a good-faith effort to attend all meetings. Staff expect that the RAC will meet approximately every 6 weeks. Earlier in the process meetings may be scheduled more frequently. Later in the process meetings might be scheduled less frequently. Pursuant to the direction in HB 3409, at least four of the RAC meetings will be held at "various locations around the state." Meetings held at different locations will also include an optional tour of facilities at various stages of development as well as resource lands, habitat, and local communities. Because of the collaborative nature of the meetings, in-person attendance is optimal. At least two meetings will be virtual. All meetings will be live streamed and include a hybrid attendance option. It is important to have RAC

members attend consistently for continued discussions and shared learning. To facilitate consistent participation of RAC member organizations and interests, the RAC can include one alternate for each member designated in advance.

Summaries. DLCD has contracted with a neutral third-party to facilitate RAC meetings and prepare draft and final meeting summaries. Staff ask RAC members to communicate any corrections within one week of the publish date of the draft. All final summaries will be posted on the [project webpage](#).

IV. Decision-making and Commitments

DLCD's goal in convening this RAC is to receive individual and group guidance on developing Oregon Administrative Rules to LCDC for consideration at their December 2024 meeting. RAC members are encouraged to communicate their guidance at meetings or in writing.

If RAC members choose to articulate areas of agreement and disagreement, members representing the different perspectives on specific issues will be invited to prepare language reflecting their views. The statements should clearly identify the issues and information needs and uncertainties. In addition, those members that support each perspective will be identified with their permission.

Tribal representatives' participation in the RAC does not take the place of formal consultation.

V. Member Expectations

Collaboration. RAC members agree to:

1. Bring up concerns for discussion at the earliest point in the process.
2. Share all relevant information that will assist RAC members in achieving their goals.
3. Keep their agency, organization, or community of interest informed of recommendations formulated by the RAC.
4. Review and comment on draft and revised rules, fiscal impact statements and other associated strategies and / or documents.

Preparation. Members will make a good faith effort to review meeting materials in advance of each meeting.

Communication. Members will make a good faith effort to notify one another in advance of actions outside the RAC which could affect the proposals, recommendations, or agreements being discussed.

Press and Public Forums. Please refer media inquiries about this process to DLCD staff. If a member does speak to the media, DLCD asks that RAC members identify that their views are their own, and not necessarily of the RAC or DLCD.

VI. Process




Staff and RAC members agree to apply the following:

- Listen with respect, seeking to understand each other's perspectives.
- Listen to others' point of view without interruption.
- Allow for a balance of speaking time while respecting time and agenda meeting goals.
- Be tough on issues and questions, rather than on people and organizations.
- As appropriate, discuss topics together rather than in isolation.
- Seek to resolve differences and reach agreement.
- Silence cell phones during meetings.




VII. Schedule

The RAC will meet approximately every six weeks to prepare draft rules for a Land Conservation and Development Commission hearing in December 2024.

LCDC Eastern Oregon Solar Opportunities Rules Advisory Committee **The LCDC/DLCD Leadership Team**





<p>Nick Lelack LCDC Vice Chair Commission Liaison</p> 	<p>Nick Lelack, AICP, serves as the Deschutes County Administrator. Previously, he served as the County's Community Development Director, Deschutes County Planning Director, City of Redmond Community Development and Planning Director, and other experiences spanning the public, private and non-profit sectors; federal, state and local governments; urban, rural and resort communities; coast-to-coast and from high altitudes to sea level. He is a member of the American Institute of Certified Planners (AICP), has Master's Degrees in Community and Regional Planning, and Public Administration from the University of Oregon, and a Bachelor of Science from Willamette University.</p>
<p>Brenda Ortigoza Bateman, Ph.D. DLCD Director</p> 	<p>Dr. Brenda Bateman is the Director of Oregon's Department of Land Conservation and Development. During her 30-year career, she has served in strategic planning, implementation, and management roles, with a focus on natural resources policy. She is a Governor-appointee to the Oregon Geographic Information Council (OGIC) and Housing Production Advisory Council (HPAC). Previously, she served as the Chief Operating Officer/Assistant Director for Operations at Business Oregon and as Science Chief and Senior Policy Advisor at the Oregon Water Resources Department, co-authoring the 2012 and 2017 versions of Oregon's Integrated Water Resources Strategy. As past president of the American Water Resources Association, she represents the association internationally in venues such as the World Water Forum and World Water Congress. She has a doctorate in public policy from the University of Maryland Baltimore County, and master's and bachelor's degrees from The Johns Hopkins University.</p>
<p>Gordon Howard DLCD Community Services Manager</p> 	<p>Gordon Howard is the Community Services Division Manager with the Oregon Department of Land Conservation and Development. He supervises regional representatives and the department's urban and rural specialists. He began with the Department in 2012 as the Principal Urban Planner, before becoming Community Services Division Manager in 2017. Previously he worked as a planner for Multnomah County and the City of West Linn. He has a M.A. in urban planning from UCLA, and a B.A. from UC San Diego. He is also a member of the Oregon State Bar, having received his J.D. from Lewis and Clark Law School. He worked several years as an attorney for the City of West Linn and in the Office of Legislative Counsel before joining the department.</p>

LCDC Eastern Oregon Solar Opportunities Rules Advisory Committee DLCD Project Staff

<p>Adam Tate Renewable Energy Planner</p> 	<p>Adam Tate is DLCD's new Renewable Energy Planner in the Community Services Division. He is a graduate of the University of Oregon with a master's degree in Community and Regional Planning. Adam and his wife Holly moved to Oregon from Texas in 2019. They enjoy travelling, hosting exchange students, and enjoying all the beautiful nature of the Northwest. In his spare time Adam is working on a book about urban design solutions to address the urban heat island effect.</p>
<p>Alexis Hammer Legislative & Policy Coordinator</p> 	<p>Alexis serves as the Agency's Legislative & Policy Coordinator. Prior to coming to DLCD he worked for 1000 Friends, where he served as the Great Communities Program Director and Staff Attorney. He also served in roles at DKS Associates, ODOT, the City of Eugene, and the Sustainable Cities Institute. He is a graduate of the University of Oregon and holds a J.D. and Master's in Community and Regional Planning. Alexis is a lifelong outdoor enthusiast and enjoys backpacking, snowboarding, running, and biking. He also recently took up surfing but is still getting the hang of it. Alexis and his wife Michaela have a black lab mix, Winnie. The three of them are enjoying their new home in Corvallis, Oregon.</p>
<p>Amanda Punton Natural Resources Specialist</p> 	<p>Amanda Punton is the Natural Resource Specialist for the Oregon Department of Land Conservation and Development (DLCD). She has worked for the State of Oregon on various natural resource topics for over 25 years. At DLCD her work is focused on natural and cultural resource protection and Oregon land use requirements for siting aggregate mines. Amanda interfaces with federal, state, and local regulatory entities to create, implement and enforce state rules and local codes intended to manage development so that sensitive resources and hazardous areas are avoided. She is DLCD's contact for Statewide Land Use Goal 5 (Natural, Scenic, Historic and Cultural Resources), Goal 6 (Air Water and Land Quality), and Goal 15 (Willamette River Greenway).</p>
<p>Angie Brewer Central Oregon Regional Rep</p> 	<p>Angie Brewer is the Central Oregon Regional Representative for the Department of Land Conservation and Development. Her region includes eight counties, 27 cities, and portions of the Columbia River Gorge National Scenic Area. Before coming to DLCD in late January of 2022, Angie spent seventeen years as a senior regional planner for the Columbia River Gorge Commission, planning director for Wasco County, senior planner for Deschutes County and served in officer roles for the Association of Oregon County Planning Directors.. Angie holds a master's degree in environmental science and regional planning, and a member of the American Institute of Certified Planners. Angie is based out of DLCD's central Oregon field office, located in Bend, Oregon.</p>

LCDC Eastern Oregon Solar Opportunities Rules Advisory Committee

DLCD Project Staff

<p>Casaria Taylor Rules, Records, & Policy Coordinator</p> 	<p>Casaria has over 20 years of experience working with the state with a focus on Oregon Administrative Rulemaking processes. She has been part of the recent Climate-Friendly and Equitable Communities rulemaking project, the 2001 Housing rulemaking project, and several others for both the Department of Land Conservation and Development and the Oregon Department of Fish and Wildlife. Casaria is originally from Washington and has been in Oregon for the last 25 years. When she's not helping DLCD manage rulemaking she enjoys disc golf, outdoor adventures in Central Oregon, and spending time with her family. She is based out of the Headquarters office in Salem.</p>
<p>Dawn Marie Hert Eastern Oregon Regional Rep</p> 	<p>Dawn is the Eastern Oregon Regional Representative for the Department of Land Conservation and Development. Her region includes ten counties and 59 cities in Eastern Oregon. Prior to coming to DLCD in May of 2022, she was a land use planner for over 20 years with the City of The Dalles, where she worked on all aspects of the city's land use planning program. She is a graduate of Oregon State University majoring in Business Administration with a minor in Communications. Dawn is currently a board member for The Dalles Art Center and Restore Oregon and has also volunteered for several community organizations in The Dalles associated with art, education, athletic, and Main Street revitalization activities. Dawn is based out of DLCD's Eastern Oregon Regional Solutions office located at the Eastern Oregon University campus in LaGrande.</p>
<p>Sadie Carney Policy Analyst & Communications</p> 	<p>Sadie has worked in communications, policy and community engagement for DLCD for nearly a decade. Prior to her work with the state, Sadie worked as the Director of Community Relations for the Salem area public transportation provider. Holding a MA in Urban and Regional Planning from Portland State University, Sadie has a background in communications and community engagement. A devotee of community meetings and open houses, Sadie finds that recently her opportunities to participate locally, in Salem, are limited due to the demands of her four young children. As a Virgo, Sadie prefers organized, well-planned projects, so is happy to be part of this team.</p>
<p>Jon Jinings Community Services Specialist</p> 	<p>Jon was born in Corvallis and raised in Central and Eastern Oregon. He is a proud alumnus of Redmond High School and Eastern Oregon University. Prior to coming to DLCD in 1997, Jon worked for local governments, breaking in with Wallowa and Union Counties. Jon has worked on many, many administrative rule making projects and enjoys the art of creating productive policy that works for all interested parties. His work for the department primarily focuses on rural land use issues with an occasional dabble in urban affairs, which he enjoys. Jon's favorite thing about being a land use planner is helping to keep Oregon, Oregon – particularly when it is necessary to change with the times. He finds energy, renewable and otherwise, to be an absolutely fascinating subject and is excited to be a part of the work implementing HB 3409. Jon is based out of DLCD's Central Oregon office in Bend.</p>

**LCDC Eastern Oregon Solar Opportunities Rules Advisory Committee
Facilitation Team - Kearns & West**



Jamie Damon
Vice President

Jamie Damon is a Vice President at Kearns & West with over 30 years of experience as a mediator, facilitator, and public engagement practitioner. She has successfully designed, facilitated, and managed controversial and complex public policy consensus seeking processes in Oregon, Washington, and Alaska addressing issues involving public works, transportation, land use, natural resources, emergency services, crisis response, endangered species, public facilities, internal work teams, cultural resources, historic preservation and legislative issues.



Ariella Dahlin
Associate

Ariella Dahlin is an Associate at Kearns & West working on facilitation and engagement projects in the housing, natural resources, energy, and transportation sectors. Ariella uses best practices and an intersectional lens to cultivate meaningful relationships through public engagement processes and communications. She strives to support clients in decision-making and trust-building by designing and implementing equitable and transparent public processes. She holds a bachelor's degree in Environmental Studies and Political Science from the University of Oregon, focused on environmental policy and sustainable design and practice.



Grant Simmons
Project Coordinator

Grant Simmons is a Project Coordinator at Kearns & West supporting stakeholder engagement, data analysis, and digital communications on transportation and natural resources projects. His experience includes crafting climate policy while an intern with the City of Santa Cruz, CA, and he previously engaged in equity-focused non-profit work as a community engagement coordinator for the Friends of the Santa Cruz Public Libraries. Grant's interests include decarbonization, environmental justice, transportation, and equitable collaboration.

Small Group Discussions 11:10 to 12:30 PM

We will have four simultaneous small group discussions. Everyone will have the opportunity to be in each of the four sessions. Each small group will have a facilitator and a note taker. Take a look at the session topics/questions and come prepared to share your thoughts. The purpose of the small groups is two-fold: 1) to hear your initial thinking on these topics to help us understand what is important to you. We are not seeking clear, definitive type of answers. It's fine to say, "I don't know" or "I'm not sure." and 2) Give you an opportunity to work together and get to know each other a bit more and start the ball rolling.

Session 1 – What issues/subjects should be on the table for further discussion?

Here is a list of things we have put together so far based on things we have heard and picked up along the way:

- Interaction between and among Goals (2,3,4,5) and Oregon Administrative Rules (Divisions 4,6,23,33)
- Other land not protected for resource use?
- Project Retirement?
- Workforce Housing?
- How do we know development will contribute to Oregon's Climate Goals?
- How much solar does Oregon need or want?
- Agrivoltaic (combination of agricultural and renewable solar activities) and other Voltaic types (Floatovoltaic)?
- Lands in Irrigation Districts with reduced water delivery?
- Treatment of lands enrolled in Conservation Reserve Program (CRP)?
- Adaptive management – build in scheduled rule review?

Session 2 – What Technical Advisory Committees (TAC) might be helpful? Should general informational sessions, such as webinars on specific topics be provided as well? Examples/Recommendations include:

- Project Application and Development
- Interconnection & Transmission
- Mitigation
 - Wildlife Habitat
 - Farming, Ranching and Forest Lands
 - Other?
- Wildfire
- Historic, Cultural, Archeologic Resources

Session 3 - How to identify and best understand Community Priorities and Benefits? Language from the LCDC Charge:

- *Include area selection criteria based on broad consideration of **community priorities and benefits**. Among other things, consideration will be given to possible impacts to city growth scenarios, future housing availability, and urbanization strategies.*

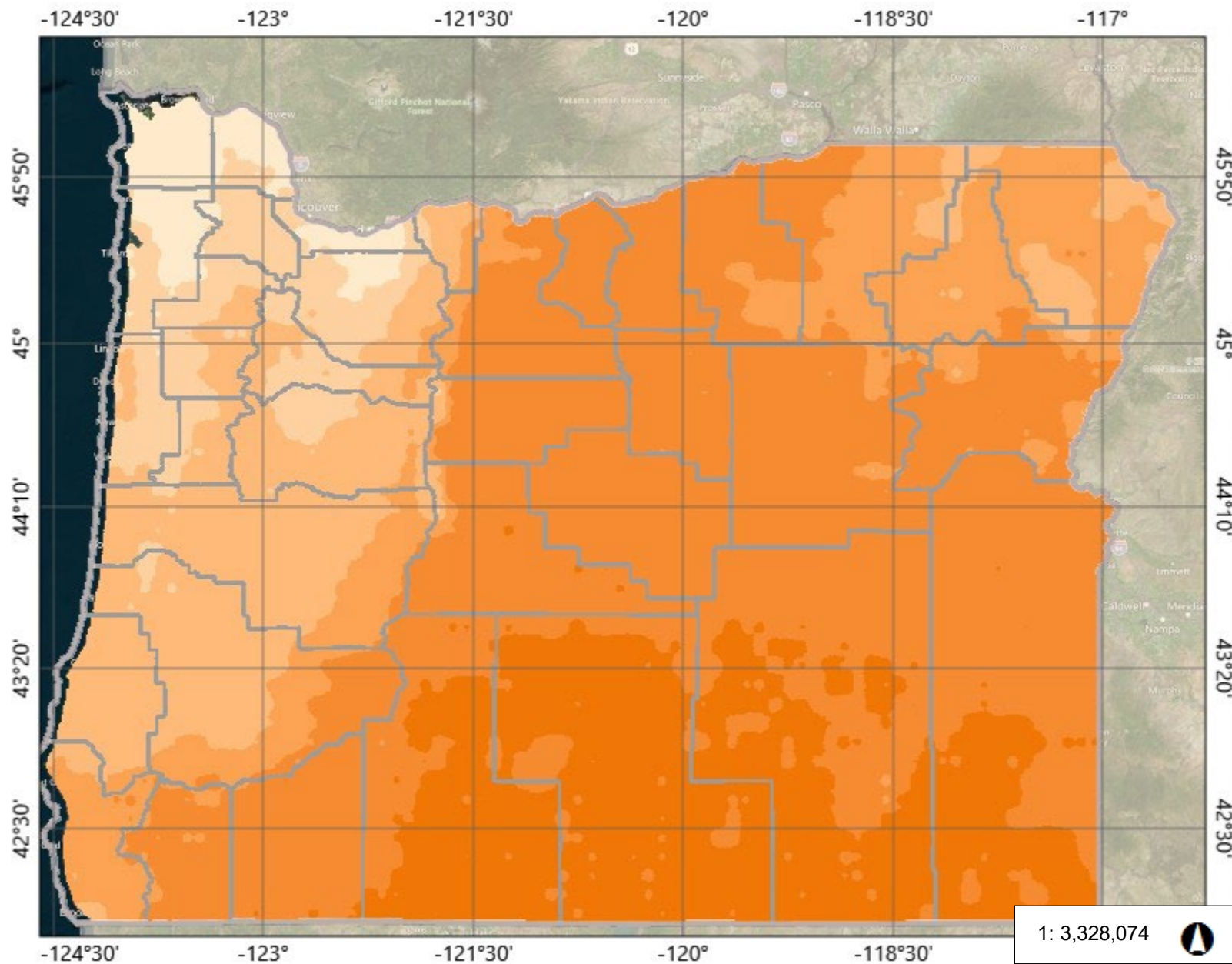
Session 4 – High level thoughts about locational items. Language from the LCDC Charge:

*Identify that areas considered “significant” for photovoltaic solar power generation for purposes of OAR chapter 660, division 23 are to be designated based on having an adequate estimated **Annual Solar Utility-Scale Capacity Factor**, and **reasonable proximity to transmission**...*

Areas in Eastern Oregon have an Annual Solar Utility-Scale Capacity Factor ranging from a low end of around 19-21% to an upper end of 24-25%. Would it make sense for the rule to focus on one range as opposed to another?

Areas in Eastern Oregon include transmission lines of varying sizes and ownership. Is there a distance that could make sense to be considered as a “reasonable proximity” (1 mile, 2 miles, 5 miles....???).

See also attached maps.



Legend

- Counties
- Estimated Annual Solar Utility-Scale Capacity Factor
- 16 - 18 %
- 18 - 19 %
- 19 - 21 %
- 21 - 22 %
- 22 - 24 %
- 24 - 25 %

Notes

Add your notes here

105.1 0 52.53 105.1 Miles

WGS_1984_Web_Mercator_Auxiliary_Sphere
© Oregon Explorer (<https://oregonexplorer.info>)

This map is a user generated static output for reference only from:
[Oregon Renewable Energy Siting Assessment Map Viewer](#)
Data layers that appear on this map may or may not be accurate, current, or reliable.
THIS MAP IS NOT TO BE USED FOR NAVIGATION.

Figure 1 – Two Mile Corridor

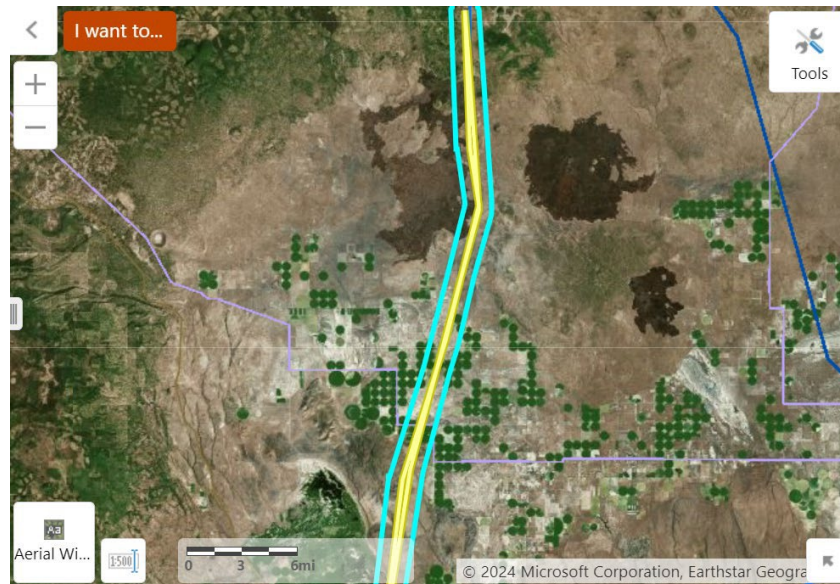


Figure 2 – Four Mile Corridor

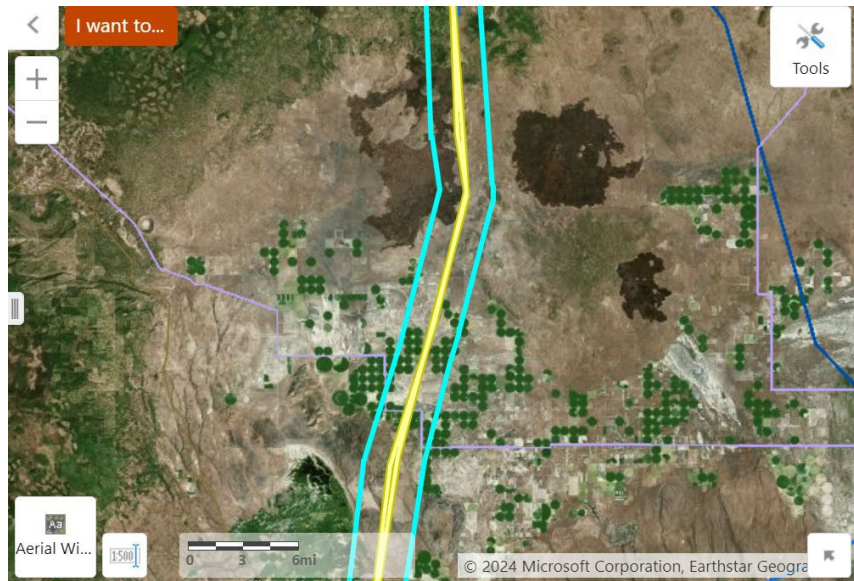


Figure3 – 10 Mile Corridor

