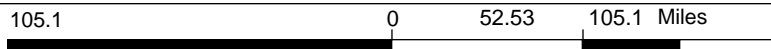


Legend

- Counties
- Estimated Annual Solar Utility-Scale Capacity Factor
 - 16 - 18 %
 - 18 - 19 %
 - 19 - 21 %
 - 21 - 22 %
 - 22 - 24 %
 - 24 - 25 %

1: 3,328,074

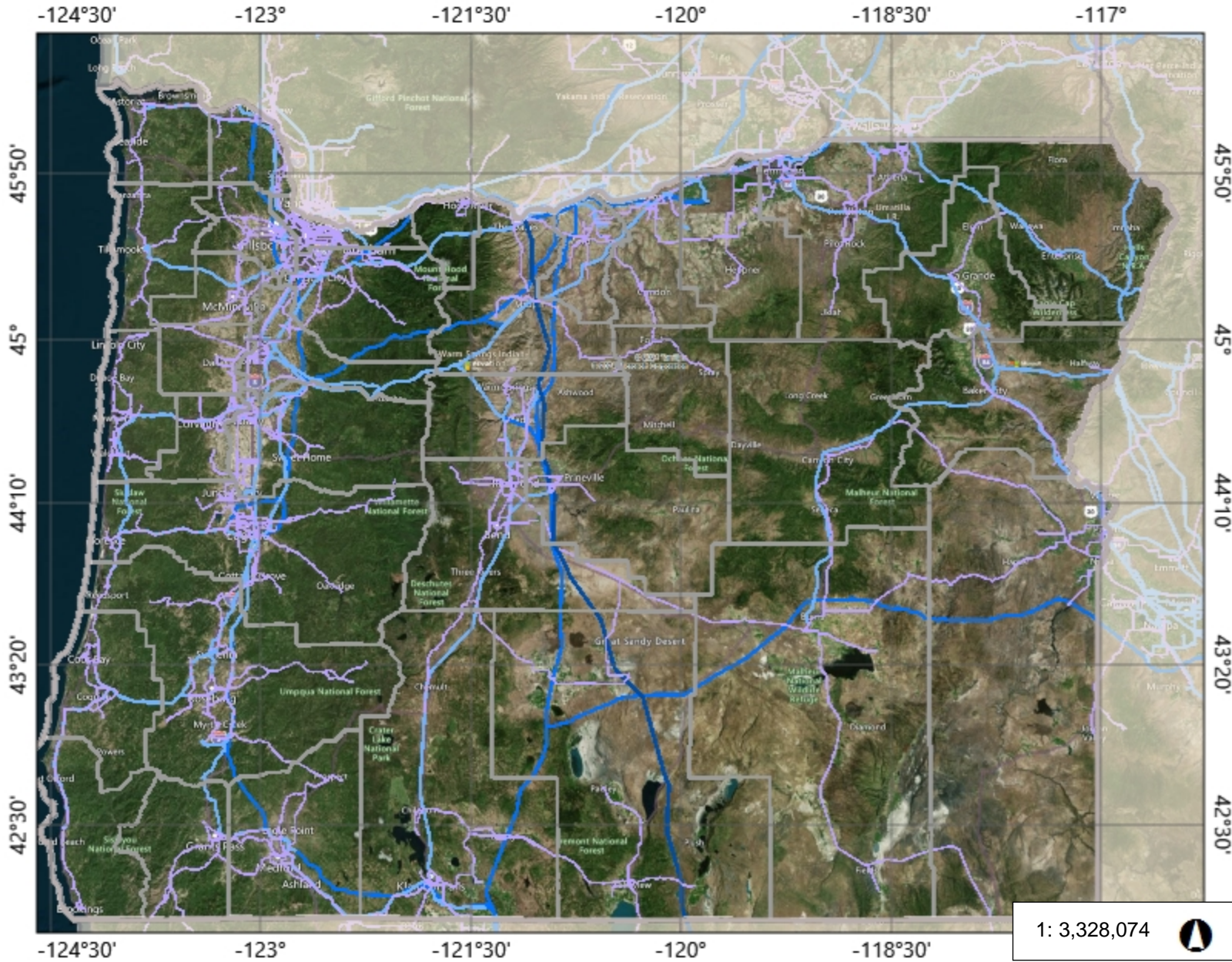
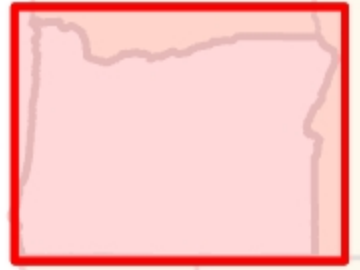


WGS_1984_Web_Mercator_Auxiliary_Sphere
© Oregon Explorer (<https://oregonexplorer.info>)

This map is a user generated static output for reference only from:
[Oregon Renewable Energy Siting Assessment Map Viewer](#)
Data layers that appear on this map may or may not be accurate, current, or reliable.
THIS MAP IS NOT TO BE USED FOR NAVIGATION.

Notes

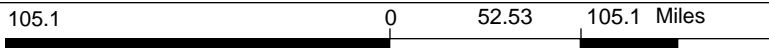
Map for informational purposes only. No recommendation inferred or implied.



Legend

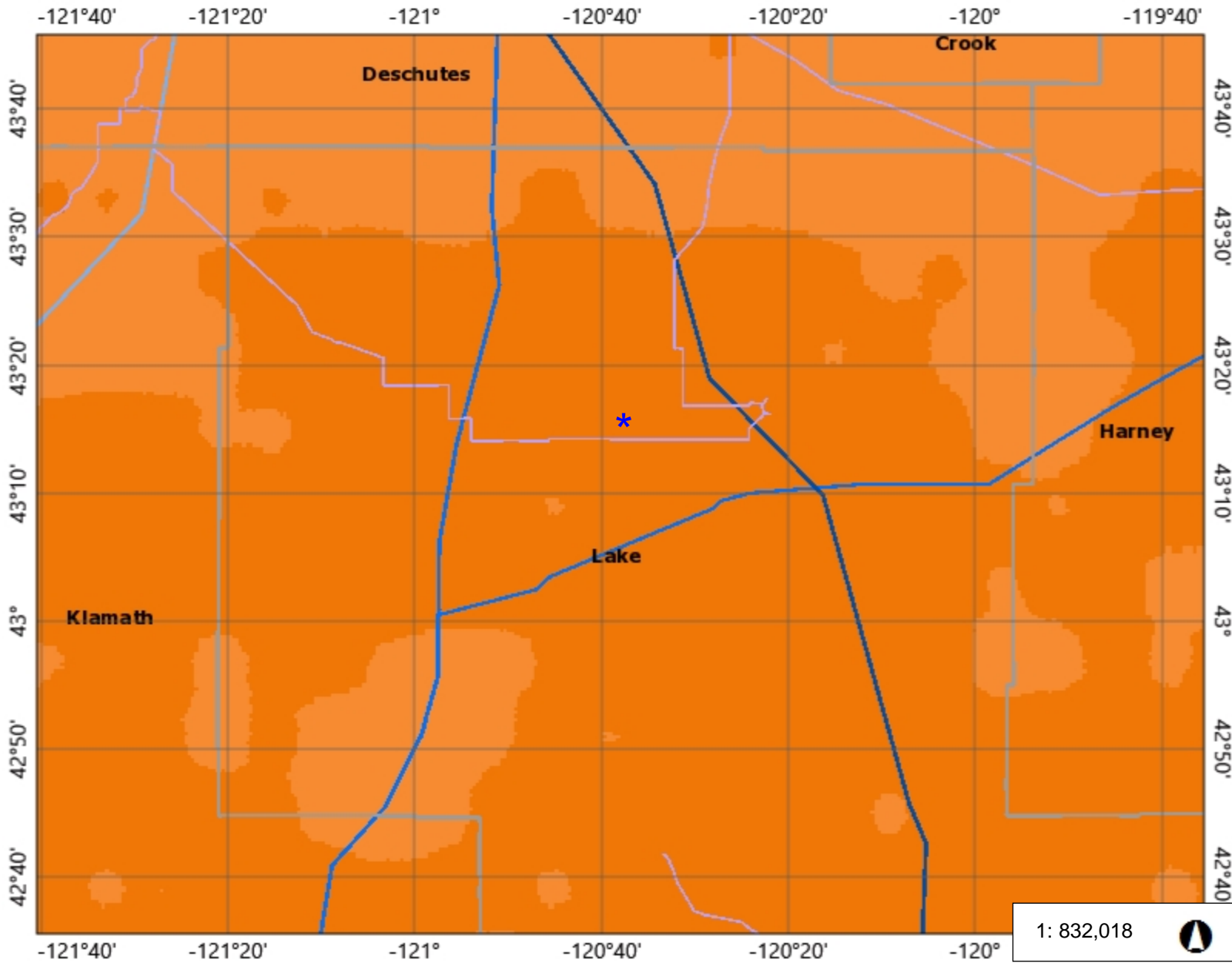
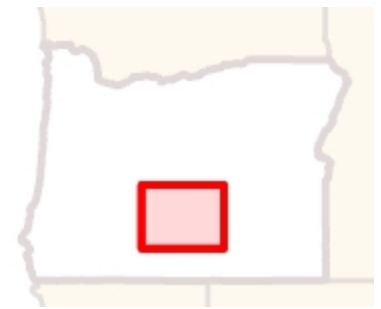
- Counties
- Transmission Lines
 - Unknown
 - 115 kV
 - 115 - 230 kV
 - 230 - 500 kV
 - ≥ 500 kV

1: 3,328,074



Notes

Map for informational purposes only. No recommendation inferred or implied.

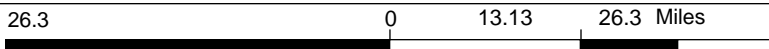


Legend

- Counties
- Transmission Lines
 - Unknown
 - 115 kV
 - 115 - 230 kV
 - 230 - 500 kV
 - >= 500 kV
- Estimated Annual Solar Utility-Scale Capacity Factor
 - 16 - 18 %
 - 18 - 19 %
 - 19 - 21 %
 - 21 - 22 %
 - 22 - 24 %
 - 24 - 25 %

* = Christmas Valley

1: 832,018



Notes

For informational purposes only.

Figure 1 – Two Mile Corridor

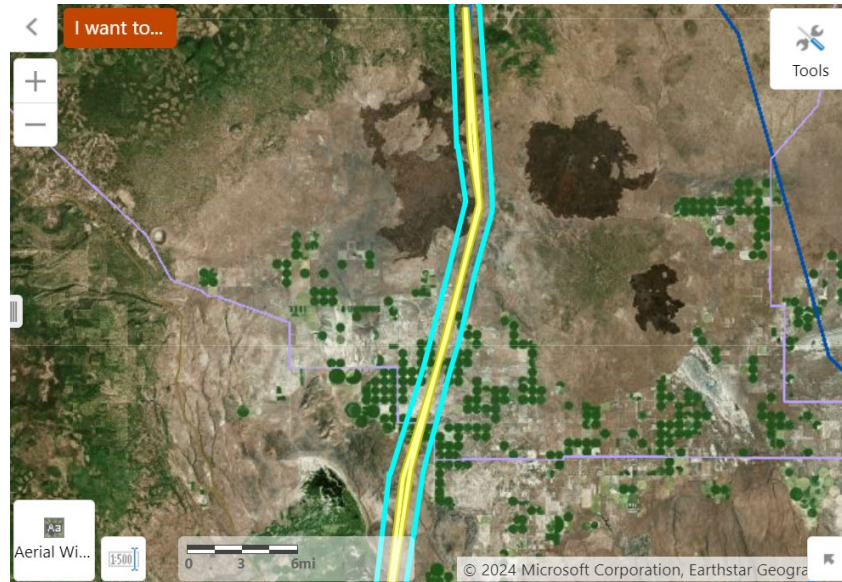


Figure 2 – Four Mile Corridor

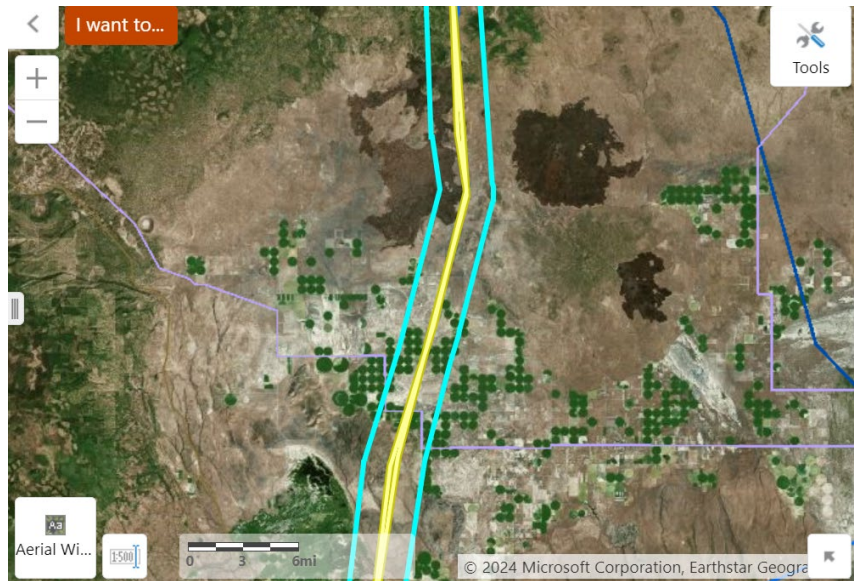
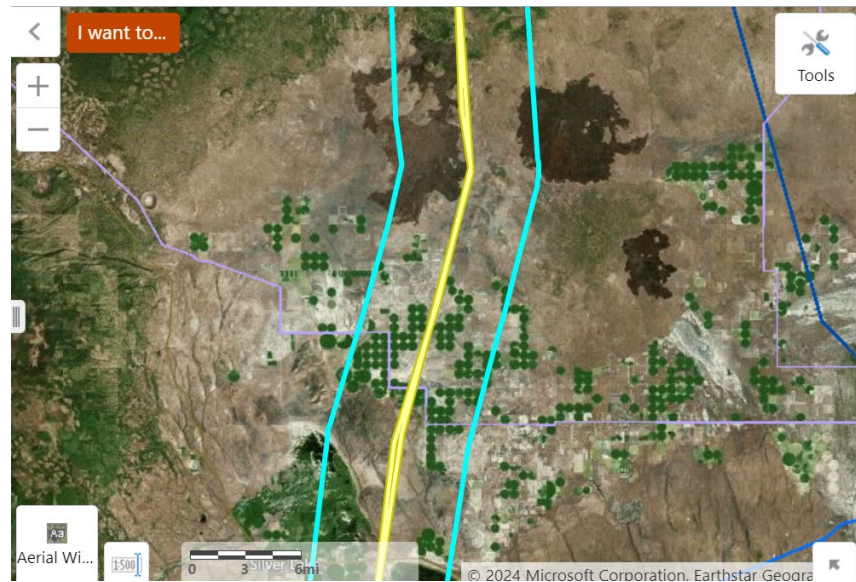
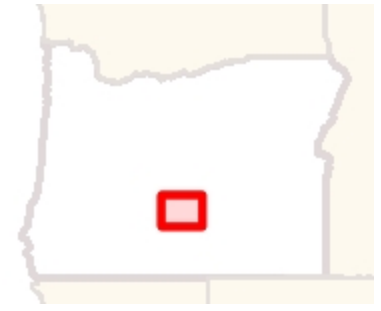
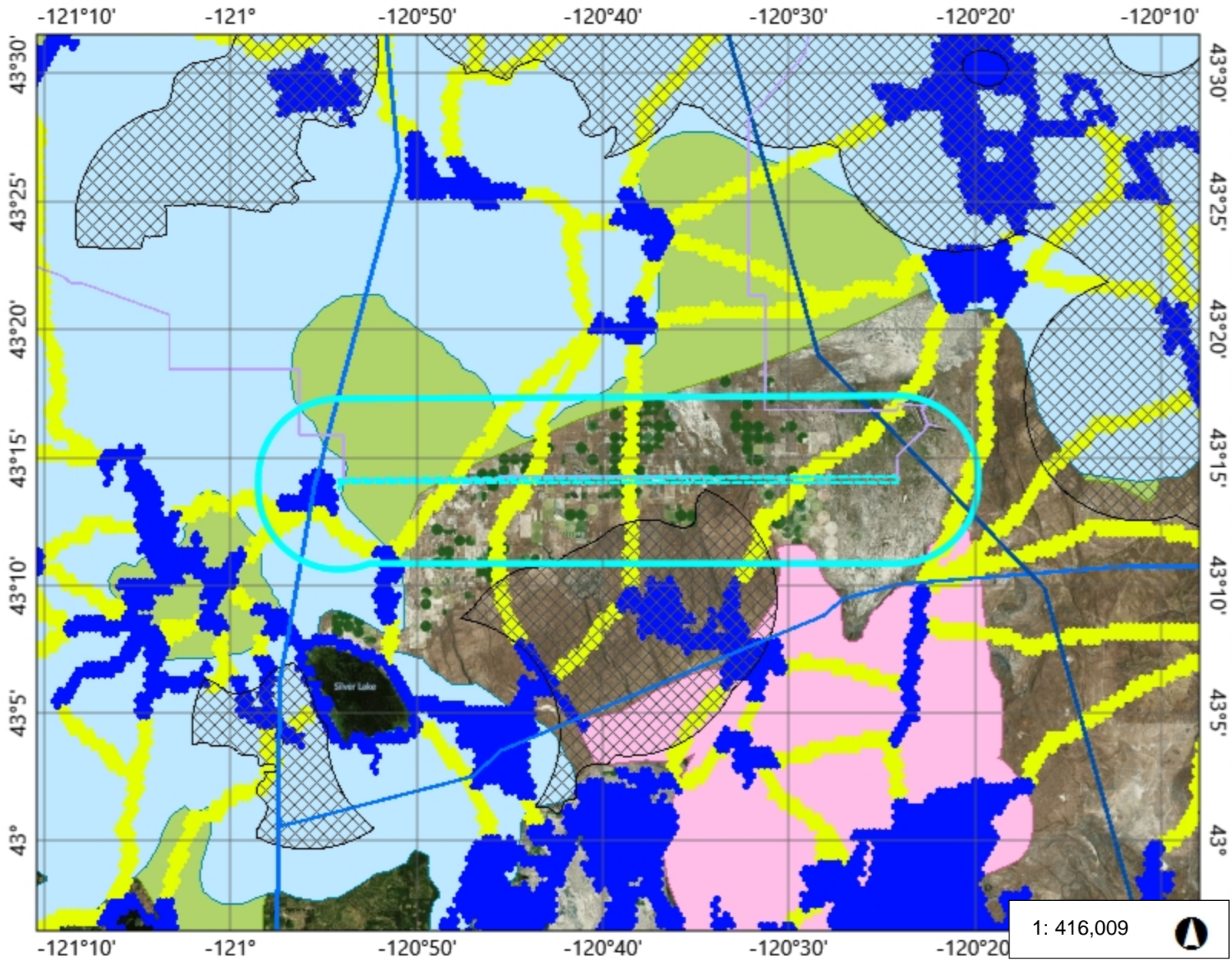


Figure 3 – 10 Mile Corridor





Legend

- Transmission Lines**
 - Unknown
 - 115 kV
 - 115 - 230 kV
 - 230 - 500 kV
 - >= 500 kV
- Greater Sage-grouse Low Density Habitat**
- Priority Wildlife Connectivity Areas**
 - Connector
 - Region
 - Steppingstone
- Eastern Oregon Deer Winter Range**
- Eastern Oregon Elk Winter Range**
- Bighorn Sheep Habitat**

Notes

Add your notes here

