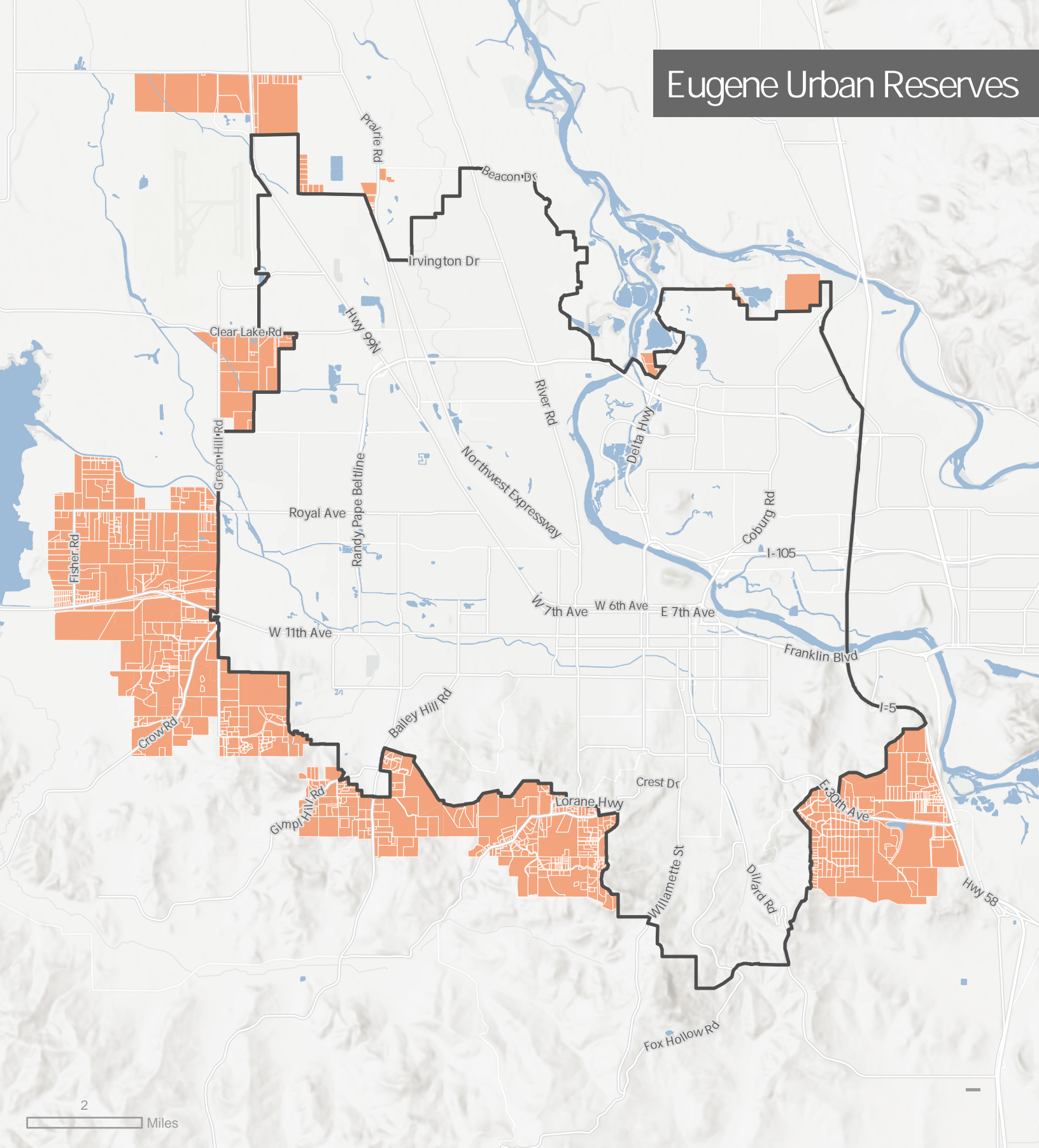




Eugene Urban Reserves



2 Miles

-  Eugene urban growth boundary
-  Eugene urban reserves
- Tax lot boundaries in white

Caution: This map is not suitable for legal, engineering, or surveying purposes. Tax lot boundaries are from the analysis effective date (November 2018), shown for reference only and may change over time. This map in no way attempts to predict, determine, or require what happens on individual lots.

Data sources: City of Eugene, Lane County, RLID, DOGAMI.

