

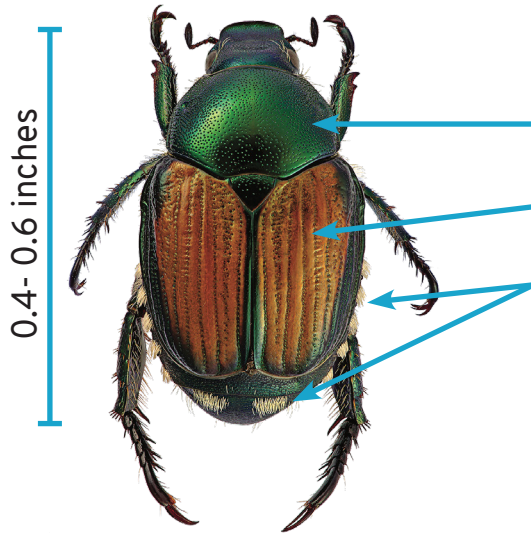
# JAPANESE BEETLE IN OREGON



**OREGON  
DEPARTMENT OF  
AGRICULTURE**

## Japanese Beetle Identification and Characters

In Oregon, the Japanese beetle (JB) can be distinguished from potential look-alikes by a combination of characters, and the overall body length. If the size and noted characters of a suspect insect do not all match then the specimen is unlikely to be JB.

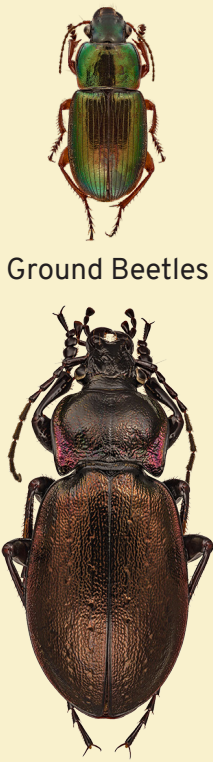


### JB Identifying Characters

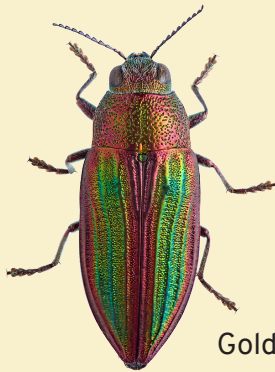
- metallic green thorax without hair
- reddish-brown wing covers
- multiple white hairy patches on abdomen
- total body length: .4 to .6 in (10- 15 mm)
- body shape oval when seen from above

## Japanese Beetle and Look-Alikes Comparison

JB and look-alikes shown to scale with a penny (.75 inch diameter)



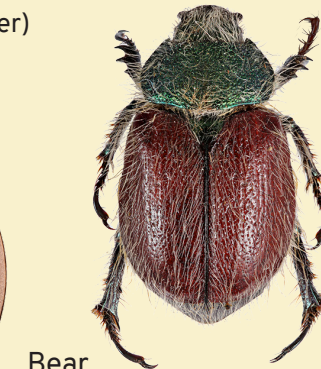
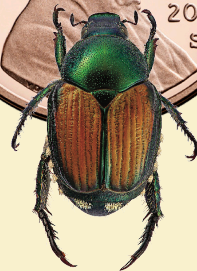
Ground Beetles



Golden Buprestid



Dichelonyx



Bear Scarab



Klamath Leaf Beetle



Box Elder Bug



Brown Marmorated Stink Bug

There are over 20,000 species of insects in Oregon, about 5,000 of which are beetles. These include a number of metallic beetle species that differ from JB in size, shape, hairiness or color. Insects common around homes such as box elder and stink bugs are also sometimes confused with JB but noticeably lack metallic coloration.