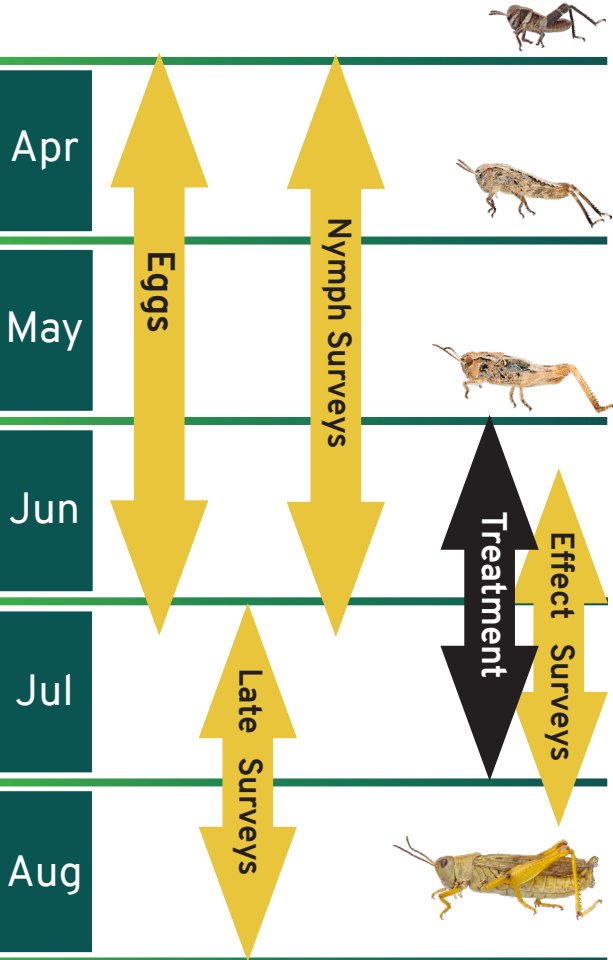


# Grasshopper Timeline

Oregon grasshopper season begins in April, when eggs laid the previous fall emerge from the soil. Hatches can last until July depending on elevation, temperature, soil moisture and the specific grasshopper species. ODA nymph (immature grasshopper) surveys last from April to early July to determine local treatment needs. Diflubenzuron treatments, which target only nymphs, should occur late May to late July. Two weeks after treatment efficacy surveys follow to assess treatment success. Late emergence surveys and treatments will be conducted as needed.



# How to Report Outbreaks

For Oregon residents, businesses and other parties concerned by grasshopper outbreaks the ODA has set up a system for tracking rangeland grasshoppers- by reporting sightings and submitting observations of potential outbreaks and outbreak species. Once submitted, reports are available to ODA entomologists for data analysis and outbreak tracking.

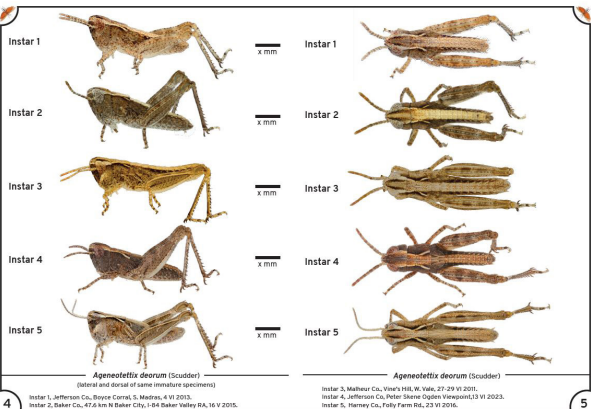
Reports can be made at:

<https://oda.fyi/GHMC>



# ODA Grasshopper Guide

To continue support for management of Oregon's rangeland the ODA IPPM entomology lab is nearing completion of a comprehensive identification guide to Oregon's major pest grasshoppers. The booklet, designed as a field guide, will be the first to provide in-depth id guidance for the hard to identify immature (nymphal) life stages of major outbreak species. The printed field guides will be available from July 2024, and will also be available online.



A plate from the upcoming ODA Grasshopper guide

# Survey Contact Information

If you have questions regarding grasshoppers or Mormon crickets in Oregon, their control, and their impact on Oregon agriculture or would like more information about the ODA Grasshopper Survey and Suppression programs, including details about eligibility, requirements and scheduling please visit us at:

<https://oda.direct/IPPMGrasshoppersCrickets>



or call our Hermiston field office at 541-567-2251

# General ODA Information

For other questions or to learn more about the Insect Pest Prevention and Management program contact us:

Insect Pest Prevention & Management Program

635 Capitol St. NE Suite 100  
Salem, OR 97301

503-986-4636

Or visit us at our website:

<https://ODA.direct/IPPM>



OREGON  
DEPARTMENT OF  
AGRICULTURE

IPPM  
Insect Pest Prevention  
and Management

Updated May 2024

# Oregon Department of Agriculture Guides and Pest Alerts



# Grasshoppers and Mormon Cricket

# Control and Suppression of Rangeland Pests



OREGON  
DEPARTMENT OF  
AGRICULTURE

IPPM  
Insect Pest Prevention  
and Management