

# MIDDLE DESCHUTES



## Agricultural Water Quality Management Area Plan and Rules

Oregon's legislature passed the Agricultural Water Quality Management Act in 1993. It requires the Oregon Department of Agriculture (ODA) to prevent and control water pollution from agricultural activities.

As a result, ODA worked with local advisory committees to develop Water Quality Management Area Plans and Rules throughout the state. Area Plans are reviewed and updated by ODA and the local advisory committee every two years. The original Middle Deschutes Area Plan and Rules were approved by ODA in 2001.

### » The Area Plan

The Area Plan guides local landowners and their conservation partners on how to prevent pollution. It includes information on agricultural water quality concerns and recommendations for addressing them.

The Area Plan does not tell anyone how to farm, ranch, or otherwise use natural resources. Rather, it includes recommended practices that a landowner can choose from. The practices can help meet their business and conservation goals, while also preventing water pollution.

Agricultural water quality concerns in the Middle Deschutes area are primarily:

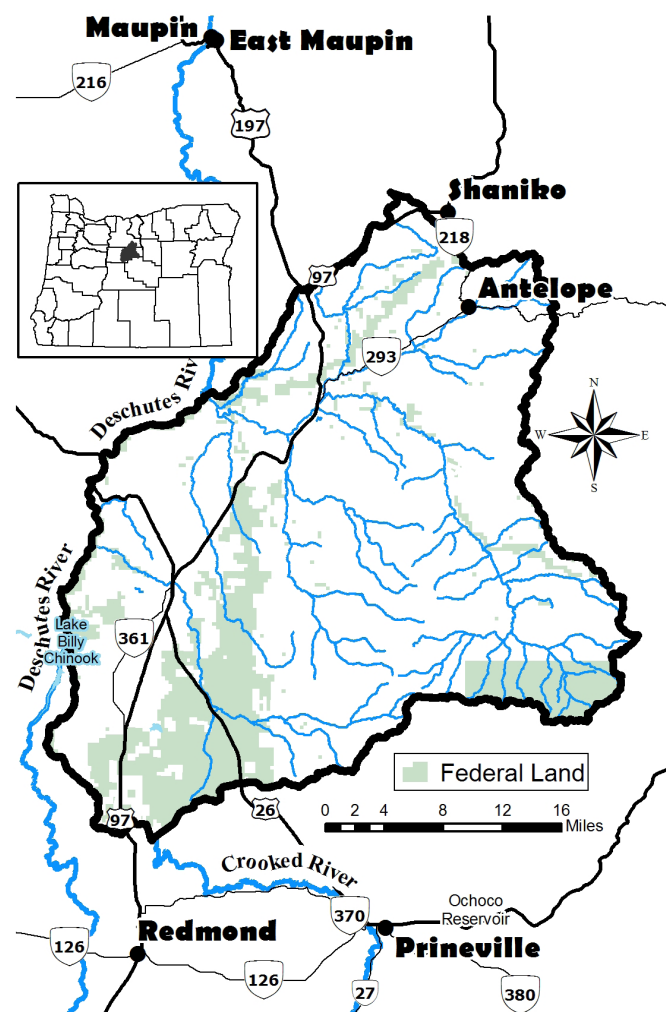
- Low stream flows due to irrigation diversions
- Degraded riparian areas due to poorly managed livestock access
- Excess sediment and livestock manure in ditches and rivers

### » The Area Rules

The Agricultural Water Quality Program focuses on voluntary and cooperative efforts by landowners and others to protect water quality.

However, the Agricultural Water Quality Management Act also includes enforcement to ensure prevention and control of water pollution from agricultural sources.

CONTINUED ON BACK



## » The Area Rules

CONTINUED FROM FRONT

Area Rules allow landowners flexibility in how they protect water quality. Area Rules describe conditions that landowners must achieve on agricultural lands, rather than practices they must implement.

All agricultural landowners must allow vegetation along:

- Year-round streams to provide shade, stabilize banks, and filter out pollutants from overland flows.
- Seasonal streams to stabilize banks and filter out pollutants from overland flows.

In addition, landowners must not pollute ground or surface water by discharging wastes\* into waters of the state or placing any wastes in a location where they are likely to enter waters of the state.\*\*

*\* Wastes include excess soil, manure, fertilizer, or other substances that can pollute water.*

*\*\* Waters of the state include ponds, groundwater, canals, ditches, and rivers.*

The local advisory committee helped ODA develop Area Rules (Oregon Administrative Rules 603-095-1640) specifically for the Middle Deschutes area. These Rules address water quality issues identified in the Area Plan.

## » Do the Area Plan and Area Rules apply to me?

The Area Plan and Area Rules apply to all agricultural lands. This includes lands in current agricultural use and those lying idle or on which management has been deferred. They also apply to agricultural activities within incorporated city boundaries, urban growth boundaries, and non-federal forest lands.

## » What should I do?

Landowners should evaluate their agricultural activities and try to determine if they might:

- Pollute streams, canals, or groundwater.
- Prevent growth of appropriate vegetation along streams.

Then change any problem practices to ensure compliance with the Area Rules and to protect water quality.

## » Who can help?

The Jefferson County Soil and Water Conservation District (SWCD) is the primary source of landowner assistance to address water quality concerns. SWCDs are non-regulatory local organizations that can help or direct landowners to additional sources of help.

Updated 9/24

## FOR MORE INFORMATION

- » Jefferson County Soil and Water Conservation District: **541.699.3170**
- » Nina Caldwell, ODA Water Quality Specialist: **503.931.6689**, [nina.caldwell@oda.oregon.gov](mailto:nina.caldwell@oda.oregon.gov)
- » ODA's Agricultural Water Quality Program: **503.986.4700**, <https://oda.direct/AgWQPlans>