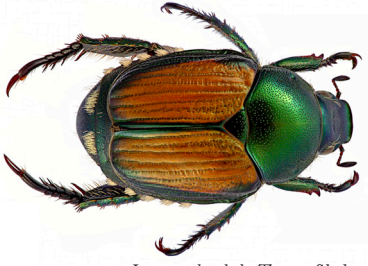


WHAT ARE THE REQUIREMENTS FOR SHIPPING GRAPE NURSERY STOCK INTO OREGON?

- It is best to purchase plants from a licensed nursery that is regularly inspected by a state department of agriculture.
- Pre-notification of each shipment is required. The nursery should fax or e-mail a phytosanitary certificate to the Oregon Department of Agriculture Nursery and Christmas Tree Program 24 hours before shipment.
Fax: (503) 986-4786 — Email: quarantine@oda.state.or.us



Japanese beetle by Thomas Shaban



European brown garden snail by Thomas Shaban



Glassy-winged sharpshooter by Alex Wild

- Additional Japanese beetle quarantine certification may be required depending upon the origin of the plants. Alabama, Arkansas, Colorado, Connecticut, Delaware, Georgia, Illinois, Indiana, Iowa, Kansas, Kentucky, Maine, Maryland, Massachusetts, Michigan, Minnesota, Mississippi, Missouri, Nebraska, New Hampshire, New Jersey, New Mexico, New York, North Carolina, Ohio, Oklahoma, Pennsylvania, Rhode Island, South Carolina, Tennessee, Texas, Vermont, Virginia, West Virginia, Wisconsin, the District of Columbia, the Provinces of Ontario and Quebec, Canada are under quarantine.
- Additional certification for European brown garden snail may be required depending upon the origin of the plants. Arizona, California, Hawaii, New Mexico, Texas, Utah, and Washington are under quarantine.
- Plants must be certified as being produced in sterile, soil-less media. No field grown stock is allowed.
- Plants must be certified as being free from dangerous pests and diseases.
- Additional certification of treatment for Glassy-winged sharpshooter and testing for Pierce's disease (*Xylella fastidiosa*) will be required if the material originates from Alabama, Arkansas, Florida, Georgia, Louisiana, Mississippi, Missouri, North Carolina, South Carolina, Texas, and, in California, Fresno, Kern, Los Angeles, Orange, Riverside, Sacramento, San Bernardino, San Diego, Santa Barbara, Tulare, Ventura, and any other county from which Pierce's disease has been reported.
- Plants may be required to be held for inspection and release by ODA before planting.

WHAT ARE THE REQUIREMENTS FOR SHIPPING GRAPE NURSERY STOCK WITHIN OREGON?

- Anyone who propagates planting stock (including grapevines) or who sells cuttings at more than \$250 annually must have a current nursery license. Vineyardists should only purchase plants from a licensed nursery that is regularly inspected by the Oregon Department of Agriculture (ODA).
- A shipping permit issued by ODA, stating that the stock is from a nursery that is regularly inspected and is free from dangerous pests and diseases, should accompany each shipment.

WHAT ARE THE REQUIREMENTS FOR IMPORTING GRAPE NURSERY STOCK FROM OTHER COUNTRIES?

Federal law prohibits the importation of grapevines directly from foreign sources. This is due to the risk of importing pests and diseases that do not yet occur in the United States. Only Foundation Plant Services at U.C. Davis has permits and virus indexing programs that allows safe importation of foreign plant material.

More information: Oregon Department of Agriculture Nursery and Christmas Tree Program
(503) 986-4644 and www.oregon.gov/ODA/programs/NurseryChristmasTree



ACQUIRING HEALTHY GRAPE PLANTS

What you need to know about
quality planting stock for vineyards



Oregon
Department
of Agriculture

Nursery & Christmas Tree Program
(503) 986-4644
www.oregon.gov/ODA

Establishing a vineyard is a major long-term investment.

You will want to do all that you can to get quality, disease-free planting stock.

The Oregon Department of Agriculture (ODA) has a set of rules and quarantines that help facilitate the production and importation of healthy grapevine material. These rules and quarantines have been crafted with industry, USDA, and universities input and are important tools that help assure you will have access to high-quality planting stock. Some of these rules are new and some are recently revised. This guide will provide an overview of some of the changes and steps for acquiring healthy grape plants in Oregon.

WHY DO WE NEED THESE REGULATIONS?

Wine grapes (*Vitis* sp.) are clonally propagated. This ensures trueness to type, but it also greatly increases the chance of disease transmission. Many of the serious pathogens and pests that plague grapes have been carried along with infested planting stock or in soil adhering to roots. Quarantines, certification programs, and nursery licensing and inspections are effective tools for disease and pest suppression or elimination.

WHERE DO I GET GRAPEVINE NURSERY STOCK?

You should purchase your grapevines only from a licensed nursery. These nurseries are inspected by plant regulatory officials and follow approved methods for plant propagation and disease suppression. If you do your own propagation, know the plant from which you are acquiring your cuttings. Seriously consider having it tested for virus pathogens before taking cuttings. You cannot always rely on a visual inspection.



NURSERIES IN OREGON

By Oregon law, anyone who propagates planting stock (including grapevines) or who sells cuttings at more than \$250 annually must have a current nursery license. This license enables ODA to inspect stock, to issue shipping certificates, to give horticultural advice, and to inform the nursery of rules and regulations. Oregon nursery laws also prohibit the sale of plants with dangerous pests and disease. **For information about licensing, please call (503) 986-4644.**

OUT-OF-STATE NURSERIES

Many vineyardists choose to buy their planting stock from other states. However, Oregon has several quarantines that restrict out-of-state material due to the occurrence of dangerous pests and diseases. The Grape and Glassy-winged sharpshooter quarantines directly affect these shipments. Other quarantines, such as the Japanese beetle and European brown garden snail, may also impact these shipments depending on origin.



WHAT ARE THE RECENT CHANGES IN THE ODA REGULATIONS?

The ODA Grape quarantine was updated on May 29, 2015 to reflect industry practices and to allow better tracking of shipments. Please contact ODA at (503)986-4636 for a complete copy or go online to: <http://bit.do/Quarantines>

Some key features of the revised quarantine include:

- A 24-hour pre-notification of out-of-state shipments with a state phytosanitary certificate.
- Shipments certified free of dangerous pests and diseases, now including Grapevine red blotch virus and Pierce's disease (*Xylella fastidiosa*).
- Plants produced in sterile, soil-less media; no field-grown material is allowed entry.
- ODA may hold and inspect shipments and may charge established rates to cover inspection costs.
- Materials found in violation are subject to immediate return or destruction and the violator may be subject to criminal fines up to \$5,000 and civil penalties up to \$10,000.