

The Klamath County CattleWomen

As women in the agricultural industry the Klamath County CattleWomen (KCCW) strives to be a voice for our local beef producers. We are dedicated to supporting the youth in our community and to celebrate, advocate and educate for the Beef Industry and Basin Agriculture programs.

Scholarships;

We support and fund youth and several scholarship programs in excess of \$16,500. to graduates from the Klamath Basin that are pursuing a field of study related to Agriculture. The Basin is all of Klamath County, and includes parts of Siskiyou and Modoc Counties in CA.

- KCCW scholarships for second year college or tradeschool students that are pursuing a degree that benefits Agriculture. These are funded by Klamath Annual Bull Sale CattleWomen Tri-Tip Dinner and Silent Auction and the fall Rancher Gala.
- Gale Patton Memorial Scholarship for local High School students that are pursuing Music and Agriculture is funded by our annual Gail Patton Memorial Bake sale.
- Oregon Institute of Technology Scholarship Award

FFA & 4H Awards;

KCCW donates over \$10,000 during the Klamath County Fair for FFA & 4H Awards Program. Showmanship Awards up to \$300 for each individual student and for the event.

- Ranch Raised Award, and Steer of Merit contest.
- Bred Heifer Sale, KCCW funds, supports the FFA & 4H youth who show and auction their Bred Heifer cows at the Klamath County Fair with 100% of the money raised going to the students.

Additional Events that we participate in or sponsor

Klamath County CattleWomen Ranchers Gala

- An annual event to bring the community together to celebrate while making a difference for the Ranching and Agriculture community through political action and education fundraising.

Klamath County Showcase Legislature tour;

- KCCW provides lunch and host a Q&A session for the Oregon Legislative Members to see and hear what makes Klamath County unique in regards to our water, wolf, and enviromental impact issues.

Klamath Bull Sale;

- KCCW host an affordable TriTip complete dinner for approximately 450 people. We provide a complete nutritional meal at \$15 a plate including water, dessert and enough food for left-overs the next day vs an average fast food meal at \$13-\$15.

Klamath County Farm Expo;

- KCCW and Oregon Farm Bureau have collaborated and funded a two-day event with approximately 1000 4th graders from Klamath, Lake, and Siskiyou County. The students meet our local farmers, ranchers, dairymen. They learn about beef cows, dairy cows, sheep, pigs, goats, horses, honeybees, hay, mint, water, master gardeners, potatoes, grains and forestry industries.

Community Support Auction Baskets

KCCW builds 10+ baskets per year that highlights the Beef Industry and supports local businesses.

Western Heritage Days;

- Klamath County CattleWomen and Klamath Cattlemen have collaborated and funded a two-day event showcasing Western life and Ranching held at the Ross Ragland Theater and Cultural Center.

Farm to School program;

- A month long Beef celebration in classroom with distribution of jerky samples and beef discussion during lunch at Elementary, Junior and Senior High Schools.

Yamsi Ranch Day;

- KCCW funds, sponsors and staffs a one day urban elementary students fieldtrip to a working family ranch where students learn about raising livestock and enjoy a BBQ lunch. Quote from the students "Every child should get to do this."

Benefit for the Basin;

- KCCW participates at this fundraising car show and dinner with a nutritional education booth and Beef sampling. We are able to reach a large audience that attends this event to support youth programs and education at Klamath County Event Center.

Klamath and Lake County Foodbank;

- KCCW funds and supports the local foodbank with Beef Bucks; these allow the foodbank to purchase beef products throughout the year as needed.

2026 Ranch Run

- Supported by Klamath County Tourism, Oregon Beef Council and with the help of the Running Y Ranch we will be holding the 2026 Ranch Run within the grounds of the Running Y Ranch Resort in Klamath Falls.
 - We will have a 10k, 5k and Calf(1k) run on the morning of May 16, 2026. If we can sort the logistics we'd like to add a half marathon, and a Senior Walk, Ride & Roll.
 - Following the run we will have a celebration BBQ and party. We are working with several organisations and service providers in the community to sponsor and donate for the event. An example of VIP Sponsor services are 10-min Chiropractic and chair Massages following the run.
 - We plan to use a large portions of the funds raised to provide beef, a needed source of protein to the Klamath /Lake County foodbank.
 - We plan to attract runners from a 4-5 hr drive to participate in the event as well as the large population of runner and active community members in Klamath County. We have negotiated low room rates at the Running Y Resort for those that wish to stay on site and are working with other hotels in the area for the event.
 - We intend to make this a destination event and will have reduced fees for wine tasting and other activities over the weekend for anyone that has participated in the run.

Thank you for your interest,

Keri Brookshire

Keri Brookshire

President, Klamath County CattleWomen

541-274-9600 keri.brookshire@gmail.com

For More Information Contact: klamathcountycw@gmail.com

<https://www.klamathcountycw.org/>

Klamath County Cattle Economics

Stability, Competitiveness and Workforce

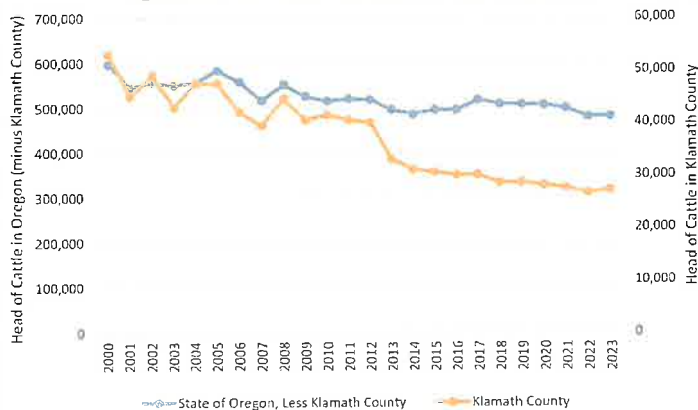
Klamath County - JUNE 2024 - Oregon State University

Study on the economic impact water shortages have had on farms and ranches in the upper basin.

- In 2000, just 25 years ago Klamath County beef cattle production was at ~52,000 head of cattle.
- By 2013 the cattle production in Klamath County had declined to below ~35,000 head of cattle.
- At the time of this study the estimated annual sales of beef cattle in Klamath County were inventory the lowest on record at ~ 27,000 head of cattle.

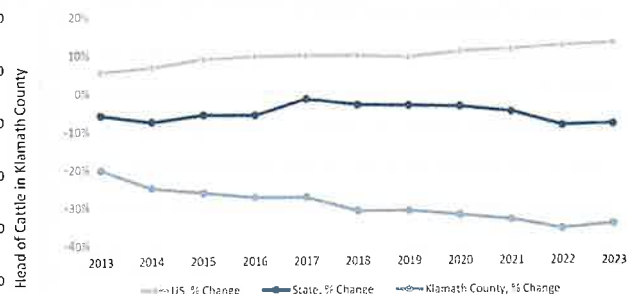
Economic Analysis of Agriculture in the Klamath Basin

Figure 5-4: Beef Cow Inventory, Klamath County



Source: National Agricultural Statistics Service, 2023

Figure 5-5: Beef Cow Inventory, Klamath County, Percent Change Relative to 2008-2012 Average



Source: National Agricultural Statistics Service, 2023

- If herd size had been maintained as it was prior to 2013, the value would likely have been \$71.9 million. 2024 cattle production value was \$46.9 million, this is a loss of \$25 million.
- This loss has resulted in an estimated reduction of 210 jobs and \$12.2 million in annual income in the three-county area (nearly all in Klamath County).
- Herd reduction can be attributed primarily to the uncertainty of annual water allocations. Even in high snowpack years only a percentage of the promised water has been received.

Klamath County Cattle Economics

Commodities and Workforce

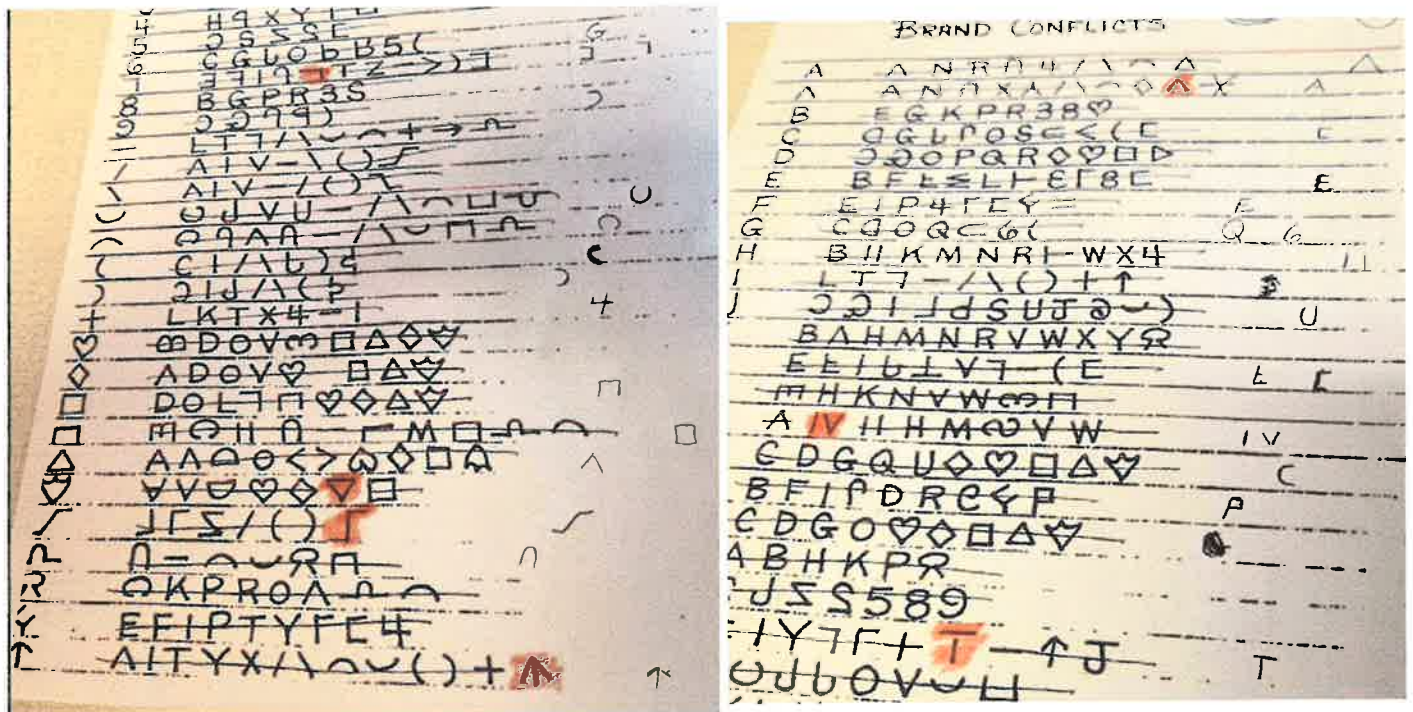
Two Bar rule is no longer valid it was put in place when running irons were used. This is no longer an issue. It is inhibiting brand registration and making it difficult to get an iron registered that is legible once placed on an animal.

We have dropped to a 40% brand approval rating and that is what is costing the department the most in loss of funds.

Out-of-state brand permits are not common knowledge and do not have their own application which hinders people's ability to successfully apply. There needs to be a notification process if your iron is denied.

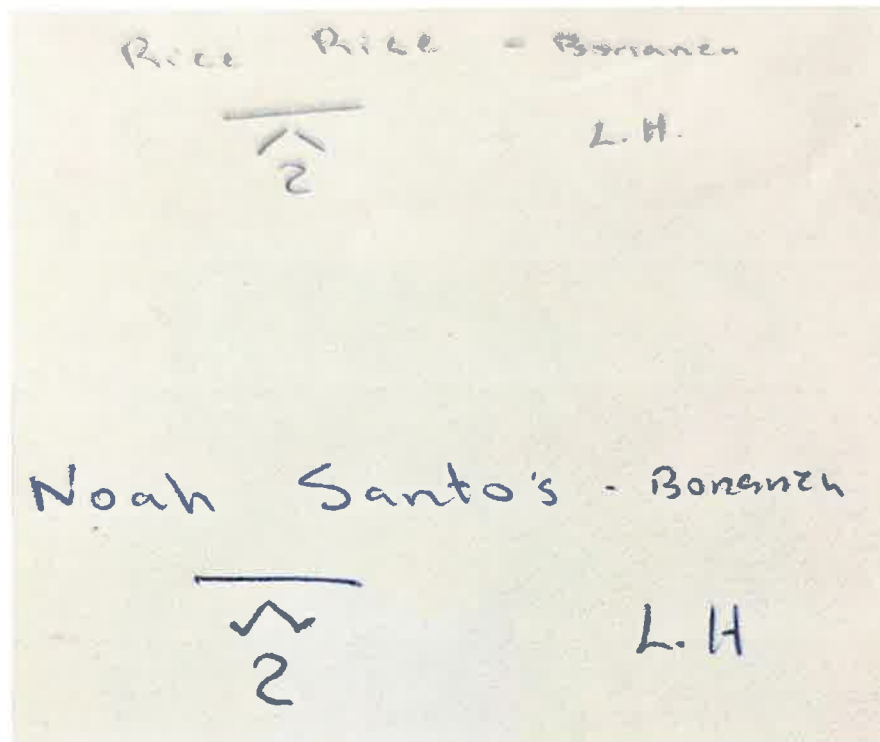
We know that there are efforts in work today to update and remove the two bar rule and brand conflict resolutions. Our ask is that this is made a priority, and we should expect to see changes within the year.

The following are examples of non-approved.



Example of approved

Yet there is a greater conflict level due to location and within the same county.



Klamath County Cattle Economics

Priorities and Safety

New World Screwworm

Until recently the last time USA had to deal with this issue was 1972 – 1976.

Upwards of 100,000 in losses in cattle headcount across 6 states and over \$10,000,000 in research and development of parasitic fly larva for a massive eradication.

What is the plan for 2025/2026 if NWS is detected in neighboring states?