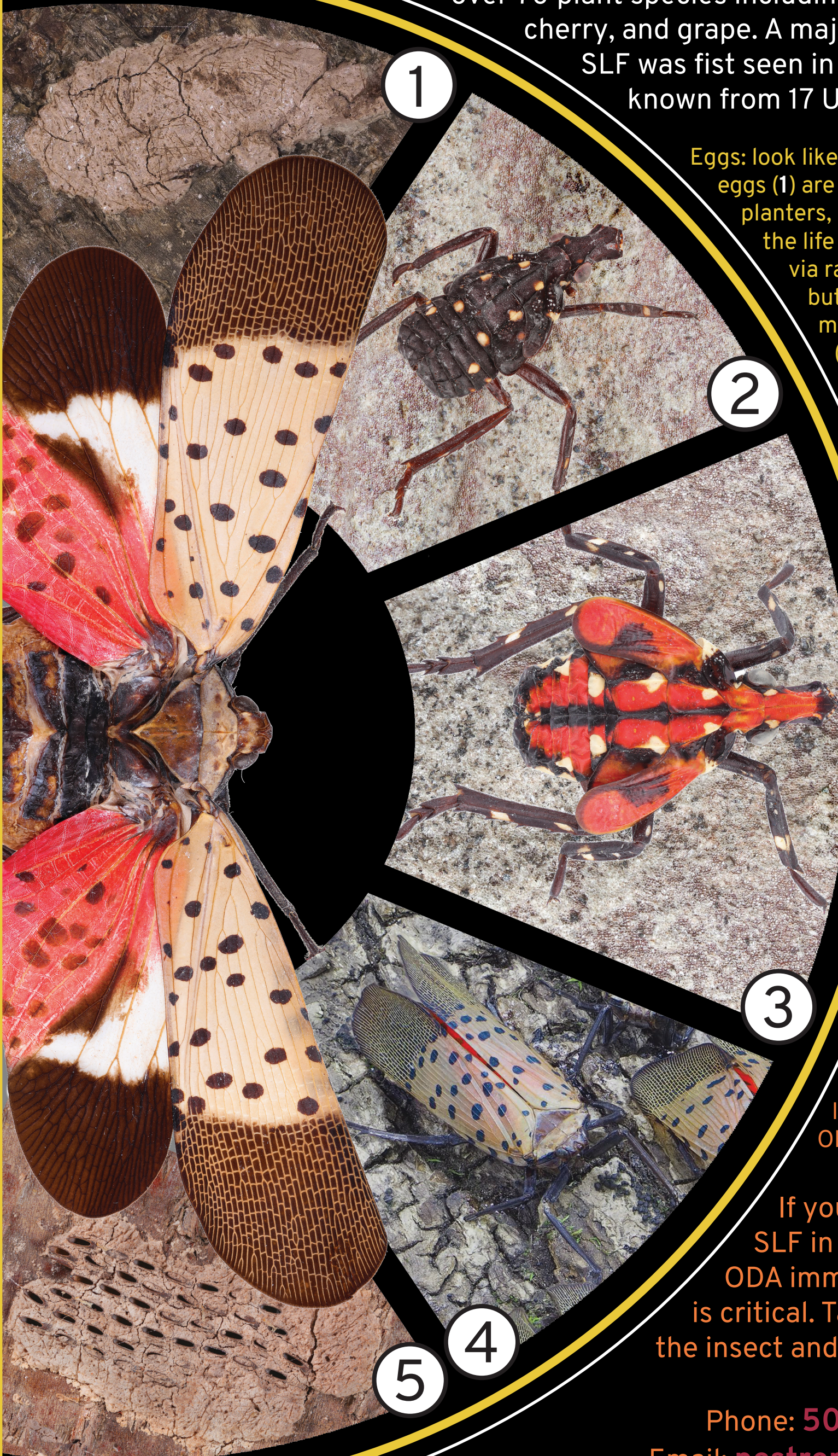
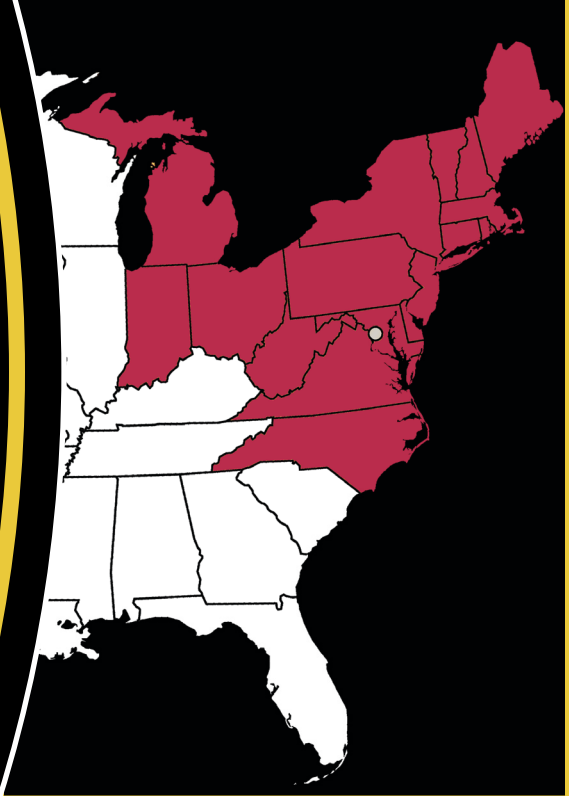


Beautiful Disaster

Spotted Lanternfly (SLF) is an exotic pest known to attack over 70 plant species including hops, pear, plum, apple, cherry, and grape. A major pest in its native Asia, SLF was first seen in the US in 2014 and is now known from 17 US states (map below).



Eggs: look like inch long mud smears. Fresh eggs (1) are laid on any hard surface (wood, planters, crates, equipment, etc) and are the life stage most likely to be moved via rail. Hatched cases (5) are similar but with rows of elongate score markings. Immatures: hatchlings (2) are wingless, black with white spots. Late instars (3) are red with white spots. Adults (4) are about 1" long, peach colored with black spots. Red hind wings not always visible.



SLF is known to spread by railroad! Keep an eye out for shipments from these 17 infested eastern states: CT, DE, IN, MA, MD, MI, NC, NH, NJ, NY, OH, PA, RI, VA, VT and WV

If you believe you have seen SLF in Oregon please notify the ODA immediately. Early detection is critical. Take a picture or capture the insect and contact us at:

Phone: 503.986.4636 or
Email: pestreport@oda.oregon.gov



OREGON
DEPARTMENT OF
AGRICULTURE