



Fact Sheet

Pesticide Stewardship Partnerships in Oregon

Background

For over two decades, the Pesticide Stewardship Partnerships Program has been using local expertise combined with water quality sampling results to promote voluntary changes in how pesticides are used. The goal is to achieve measurable water quality improvements that benefit human health and aquatic life while maintaining effective strategies to control pests and weeds.

In 2013, the Oregon legislature began funding the program through state general funds and pesticide registration fees. These funds are used to conduct water quality sampling and analyses, identify areas of concern, support watershed partners, provide grants for projects to reduce the amount of pesticides entering local surface waters, and support the collection and disposal of waste pesticides around the state.

The program receives guidance from the Water Quality Pesticide Management Team, which is composed of representatives from the Oregon Departments of Agriculture, Environmental Quality, Fish and Wildlife, and Forestry; the Oregon Watershed Enhancement Board; the Oregon Health Authority; and Oregon State University. This team uses PSP data and information to evaluate monitoring results, identify priority pesticides of concern, and work with local partners to prevent or reduce pesticide contamination in streams.

What partnerships do

Pesticide Stewardship Partnerships do the following:

- Identify local pesticide-related water quality issues
- Share monitoring results with local communities and interested individuals
- Explain data in relation to effects and/or water quality criteria or benchmarks
- Engage pesticide users and technical assistance providers to identify and implement actions to reduce pesticides from entering local waterbodies
- Use long-term monitoring to evaluate progress and provide feedback to support water quality management
- Provide financial support to PSP partners to promote of the responsible application of pesticides to protect and improve water quality



**OREGON
DEPARTMENT OF
AGRICULTURE**

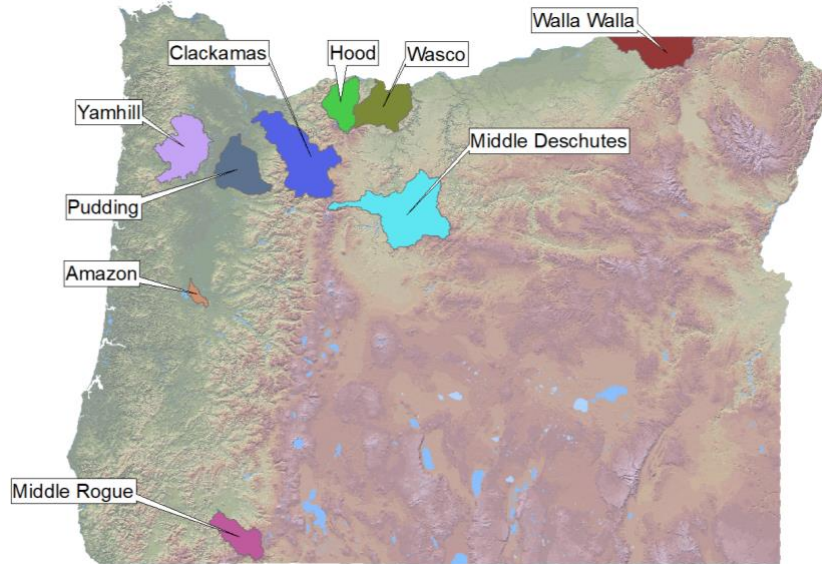


State of Oregon
DEQ Department of Environmental Quality

Pesticide Stewardship Partnership Projects

Currently there are nine designated partnerships in Oregon:

- Amazon Basin
- Clackamas Basin
- Hood Basin
- Middle Deschutes Basin
- Middle Rogue Basin
- Pudding Basin
- Walla Walla Basin
- Wasco Basin
- Yamhill Basin



Land use within each of the basins varies. In some areas watershed partners place an emphasis on urban pesticide use, in others agriculture and/or commercial forestry may be of greatest concern. This diverse mixture captures most pesticide application types and provides a balanced assessment of the effectiveness of current practices and their impact on water quality.

Program name and contacts

Pesticide Stewardship Partnerships Program

David Gruen
Oregon Department of Environmental Quality
David.Gruen@deq.oregon.gov | 503.719.2282

Kathryn Rifenburg
Oregon Department of Agriculture
Kathryn.Rifenburg@oda.oregon.gov | 971.600.5073

Alternate formats

DEQ can provide documents in an alternate format or in a language other than English upon request. Call DEQ at 800-452-4011 or email deqinfo@deq.oregon.gov.



**OREGON
DEPARTMENT OF
AGRICULTURE**



State of Oregon
DEQ Department of Environmental Quality