



OREGON  
DEPARTMENT OF  
EDUCATION

*Oregon achieves . . . together!*

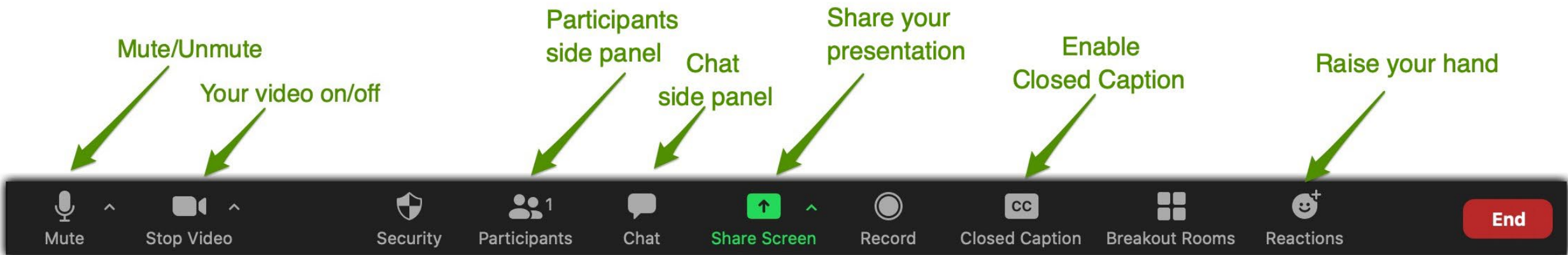
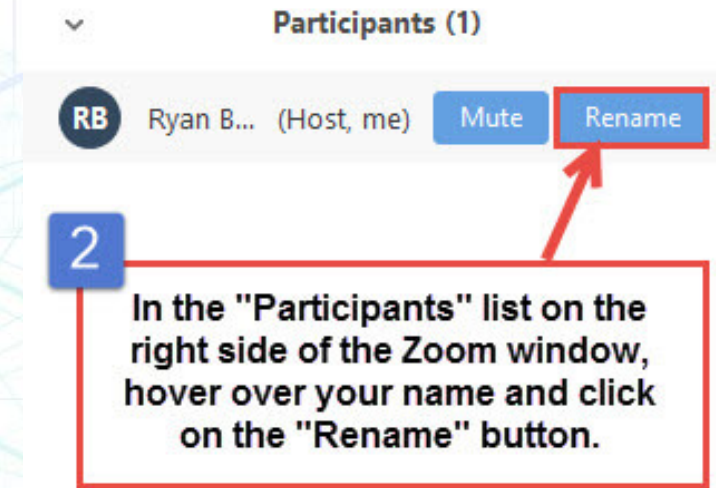
# DTC Jumpstart Webinar

September 01, 2021

Welcome! Thank you for joining us. We will begin shortly.

# Zoom Features!

- Please mute yourselves unless you are asked to speak or share a question.
- It's always great if you can keep your webcam on, but privacy is also respected.
- Use the Zoom features to chat or react (raised hand, clapping, etc.).
- Please also use the rename function to identify your district; you may add your preferred pronouns, as well.



# Introduction of Team Members

<b>Name</b>	<b>Role</b>
<b>Carla Martinez</b>	<b>Administrative Specialist</b>
<b>Crys Plattner</b>	<b>Administrative Specialist</b>
<b>Ben Wolcott</b>	<b>English Language Proficiency Assessment Specialist</b>
<b>Noelle Gorbett</b>	<b>Science Assessment Specialist</b>
<b>Tony Bertrand</b>	<b>ELA and Social Sciences Assessment Specialist</b>
<b>Andrew Byerley</b>	<b>Math Assessment Specialist</b>
<b>Caitlin Gonzales</b>	<b>Special Education Assessment Specialist</b>
<b>Sody Puth Fearn</b>	<b>K-2 Balanced Assessment Specialist</b>
<b>Dan Farley</b>	<b>Director of Assessment</b>



Acronym	Full Name
ODE	Oregon Department of Education
ESD	Education Service District
TIDE	Test Information Distribution Engine
CAI	Cambium Assessment Incorporated
OSAS	Oregon Statewide Assessment System
ELA	English Language Arts
ELPA	English Language Proficiency Assessment
CRS	Centralized Reporting System
ORS	Online Reporting System
DTC / STC	District Testing Coordinator / School Testing Coordinator
TA	Test Administrator
OTL	Opportunity to Learn



# Calendar of 2021-22 Webinars

## 2021-22 DTC Trainings

- **Tues., 11-2-2021 3 - 4:30 PM**
- **Wed., 11-3-2021 9 - 10:30 AM**
- **Thurs., 11-4-2021 3:45 - 5:15 PM**

***You only need to attend one.***

## DTC Webinars

**(second Wednesday of each month from 10:00 - 11:00 AM)**

- **Dec. 08, 2021**
- **Jan. 12, 2022**
- **Feb. 09**
- **Mar. 09**
- **Apr. 13**
- **May 11**



- **DTC Mentoring Program**
- **Weekly Assessment & Accountability (AA) [Update](#) Email and [Archive](#) site for historical updates**
- **Bookmark the [Test Administration](#), [Training Materials](#) and [Communication](#) pages**
- **Get to know your Regional [ESD Partners](#)**
  - Karen Brown Smith
  - Peter Campbell
  - Amy Rockwell





## *OSAS Updates*

- Federal and most state assessment requirements are in place for 2021-22
- SEED Survey Pilot Continues
- Statewide access to ELA, Math, and Science Interim Assessments, and Tools for Teachers
- Accessibility Updates
  - Certain math manipulatives are allowable non-embedded designated supports
  - Text-to-Speech
- 10<sup>th</sup> Grade Students can “target up”



- Test Blueprint Updates in General ELA and Mathematics
- OSAS Portal Redesign
- Centralized Reporting System (CRS) Replaces Online Reporting System (ORS)
- Kindergarten Assessment Suspended for 2021-22
- Reporting for Spring 2021
- Equitable Grading Practices PLC Opportunity

## *Legislative Updates*

- Access to Linguistic Inclusion (HB 2056)
- Assessment of Essential Skills is Suspended Through 2023-24 (SB 744)



# Federal and State Assessment Requirements for 2021-22

Assessment	Required Grades	Basis of Requirement
Science	5, 8, and 11	ESSA, ORS 329.485, OAR 581-022-2100
Mathematics	3 – 8 and 11	ESSA, ORS 329.485 OAR 581-022-2100
English Language Arts	3 – 8 and 11	ESSA, ORS 329.485, OAR 581-022-2100
Social Sciences Performance Tasks ( <i>optional</i> )	5, 8 and high school	ORS 329.485, OAR 581-022-2100
English Language Proficiency (ELPA21)	Kindergarten – 12	ESSA, OAR 581-022-0610
Kindergarten Assessment	Kindergarten	<del>OAR 581-022-2130</del> (suspended)
National Assessment of Education Progress (NAEP)	4 and 8	ESRA, Title III, sec. 303, ESSA
Nationally-Normed College Entrance Practice Examination (pending RFP)	Must be offered at Grade 10	ORS 329.488
Local Performance Assessments	3 – 8 and at least once in high school	OAR 581-022-2115

### Statewide Summative Content Assessments

The test window for the statewide summative content assessments applies both to the online General Assessments and to the Oregon Extended Assessment.

Assessment	Assessed Grades	Test Window
English Language Arts and Mathematics <sup>A, B</sup>	3-8	3/8 – 6/3
Science <sup>A, B</sup>	5, 8	3/8 – 6/3
English Language Arts, Mathematics, and Science <sup>A, B</sup>	11 <sup>C</sup>	1/11 – 6/3

### Statewide Summative English Language Proficiency Assessment Test Window

Assessment	Assessed Grades	Test Window
ELPA Summative <sup>A</sup>	K, 1, 2-3, 4-5, 6-8, 9-12	1/11 – 4/15

### Student Educational Equity Development Surveys (SEED and Alt-SEED Surveys)

Survey	Assessed Grades	Test Window
SEED & Alt-SEED Survey	3-8	3/8 – 6/3
SEED Survey	9-11	1/11 – 6/3
Alt-SEED Survey	11	1/11 – 6/3

### National Assessment of Educational Progress Test Window

Assessment	Assessed Grades	Test Window
NAEP (Selected schools only)	4, 8	1/24 – 3/4
	9 year-olds across grades	1/10 – 3/18

# 2021-22 Test Windows



# SEED Survey Pilot Continues

- **SEED Survey & Alt-SEED Survey to continue pilot in 2021-2022**
  - Participation is customizable

**\*NEW:**

- **Native Americans in Oregon- OTL questions**
- **9<sup>th</sup> and 10<sup>th</sup> Grade Surveys**
- **Russian SEED Survey available in TDS**

*\*These changes apply to SEED Survey only (not-Alt SEED)*





## ELA, Math, and Science Interim Assessment Blocks **now available!**

### ELA Interims

- Read Literary Text
- Read Informational Text
- Brief Writes
- Revisions
- Performance Tasks
- Research

### Math Interims

- Concepts and Procedures
- Problem Solving
- Modeling and Data  
Analysis
- Communicating  
Reasoning

### Science Interims




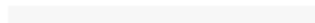
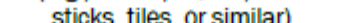

#### 3-D

- Earth/Space
- Life Science
- Physical Science.



# Accessibility Updates: Manipulatives

- For 2021-22, certain math manipulatives are available as a designated support.
- See Table 2.4 of the Oregon Accessibility Manual (OAM) for allowable manipulatives and administration guidelines.
- Appendix F of the OAM includes images of each allowable manipulative, as well as a process to request additional manipulatives.

Allowable Math Manipulatives		
<p>Algebra Tiles</p> 	<p>Base Ten Blocks or Pieces</p> 	<p>Colored Chips (including those with positive and negative sides)</p> 
<p>Colored Tiles</p> 	<p>Counters (e.g., beans, blocks, craft sticks, tiles, or similar)</p> 	<p>Cuisenaire Rods</p> 

*This is an important enhancement that will need to be communicated to special education staff and TAs in your district/school.*



# Accessibility Updates: Text-to-Speech on ELA Performance Task

**Text to Speech is set  
in the TIDE System.**

- Text-to-Speech in the ELA PT for stimuli refers to the reading sources embedded in the ELA PT associated with Claim 4 Research and Claim 2 Writing (full write/writing extended response).

**Part 1**

**Sources for Performance Task:**

**Source #1**  
You have found a source describing the type of training that astronauts receive in order to do their job.

**What is an Astronaut?**  
by Talia Yee

Have you ever thought about what it is like in space? Astronauts are people who go out into space. Being an astronaut is an exciting job. Astronauts who see Earth from space say that it is round, like a ball. While in space, astronauts can look down and see clouds, land, and water. Some can even see the moon up close. Astronauts get the chance to see more stars than you or I have ever seen.

**Source #2**  
This article describes what happens to astronauts' bodies when they go into space.

**Life in Space**  
by Aaron Higgins

Many people say they want to be an astronaut, but do they know what it's really like? When astronauts are in space, they feel weightless. They can float. This sounds like fun, but it is not that simple. The human body is used to being on Earth, but some people stay out in space for months. A lot of strange things happen to the body when it floats for that long.

Embedded Designated Supports	ELA-CAT	ELA-PT
Color Choices ?	Black on White	Black on White
Glossary ?	English Glossary	English Glossary
Masking ?	OFF	OFF
Presentation (Translations or Braille Accommodation) ?	English	English
Print on Request ?	Off	Off
Print Size ?	1X	1X
Streamlined Interface Mode ?	OFF	OFF
Text-to-Speech <small>Alert: Stimuli/Stimuli&amp;Items for ELA CAT are Accommodation Only. Use must be written into a student's IEP/504 plan. Undocumented use results in invalidation. ?</small>	Off	Off





# 10<sup>th</sup> Grade Students Targeting Up

- This is a policy reminder
- 10th grade students who have completed advanced coursework in science, ELA, and/or mathematics are allowed to “**target up**” to participate in respective 11th grade summative assessments.
- Work with your ESD Partners to request a “target up” for these students.
- With regard to accountability, participation and performance will be attributed to the year in which the student is an 11<sup>th</sup> Grader.



# 2021-22 Summative Blueprints

- The ELA and mathematics summative assessments have been shortened to maximize their efficiency and to better align with recently updated Oregon State Standards.
  - Both assessments will include a Computer Adaptive Test (CAT) component **and** a Performance Task (PT)
  - Compared to the 2018-19 ELA and Mathematics summative assessments, the number of CAT items has been reduced by 40% on the 2021 - 22 ELA and Mathematics summative assessments.
- More specific blueprint information will be posted on the ELA Assessment and Math Assessment webpages by **October 29, 2021**.
- **NO** Changes to the Oregon Statewide Assessments of Science or the Oregon Extended Assessments



[Home](#)

[Users](#) ▾

[Interim Assessments](#)

[Secure Browsers](#)

[Supported Browsers](#)

[Resources](#)

[Contact Us](#)



## Welcome to the Oregon Portal

OSAS, or Oregon Statewide Assessment System, assesses students' mastery of Oregon content standards. OSAS Online includes the English Language Arts, Mathematics, Science, and English Language Proficiency assessments.

### Announcements

[Find More](#)

OPERATING SYSTEM

#### 2021-2022 Operating System Support Plan

8/26/2021

Schools and districts should reference the Operating System Support Plan to ensure machines are updated to the minimum operating system for online testing. Read full announcement for details.

ONLINE TESTING

#### Subscribe for OSAS Updates

8/26/2021

Subscribe for OSAS portal updates to receive email alerts when new announcements are posted. Read full announcement for details.





# Centralized Reporting System (CRS)

The Online Reporting System (ORS) has been updated to the Centralized Reporting System (CRS).

- CRS preserves historical data, includes additional functionality
- Go here for *official* ELPA Screener score reports and *unofficial* score reports for summative tests
- A recording of the training webinar will be posted on the [Test Administration](#) page, under the OSAS Portal pulldown.



## After Testing

SYSTEM



### Reporting

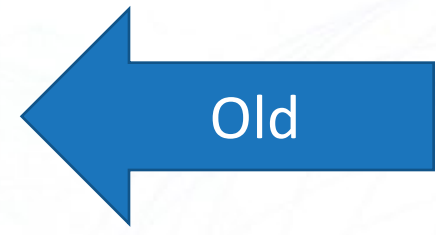
Access and download state assessment results and view reports on student performance.

SYSTEM



### Reporting - ORS

Legacy Reporting System; ORS will be turned off at the end of October.





- The KA has been suspended for the 2021-22 School Year
- ODE and ELD are planning engagements with education and community partners in 2021-22
- Our charge is to have a solution in place by fall 2022, but that is an aggressive timeline



- Districts must report state summative results to families from spring 2021 for students who participated ([OAR 581-022-2270](#))
- A condition of Oregon's state summative assessment waiver request for spring 2021 was that ODE would publish state performance data; USDE has shared that this remains the expectation
- Reporting will focus on SEED Survey Pilot data and information
- ODE Commitments:
  - We will provide clear guidance regarding appropriate and inappropriate uses of these data.
  - We will focus attention and communication on the ranges of possible values for performance.
  - Performance will always be presented alongside participation.





# Access to Linguistic Inclusion (HB 2056)

In the 2021 legislative session, Access to Linguistic Inclusion (ALI, or HB 2056) was passed into law.

- Among other things, ALI removes “English” from “English language arts” in Oregon laws having to do with instruction and high school credit-earning.
- **ALI makes no changes to testing or standards.**
- Guidance is in development and is targeted for publication prior to January 1, 2022.



The Oregon Legislative Assembly passed [SB 744](#) which directs the Oregon Department of Education to review state requirements for high school diploma options, as well as to review state requirements related to demonstrations of proficiency in Essential Skills.

- Allowing for this review, **students will not be required to show proficiency in Essential Skills** as a condition of receiving a high school diploma during the **2021-2022, 2022-2023, and 2023-2024** school years.

***Note:** SB 774 applies to the assessment of Essential Skills requirements for receiving a Regular or Modified Diploma and does not suspend the local performance assessment requirements for students in grades 3 through 8 and at least once in high school. Though not related directly to assessment, it is important to note that the education plan, education profile, and extended application graduation requirements remain in place, as well.*

For additional information or questions regarding [SB 744](#), please contact [ODE.SenateBill744@ode.state.or.us](mailto:ODE.SenateBill744@ode.state.or.us).



- **Could you provide a status update on the 10th grade assessment RFP?**
- RFP is at the final stages
- Won't know which vendor will propose or be selected until process is complete
- We will not be able to reimburse districts for any decisions made prior to the establishment of a contract
- Once the contract is established, the nationally-normed college entrance practice examination opportunity must be extended to all 10<sup>th</sup> graders





# Equitable Grading Practices PLC

- Recruitment is open through Sept. 17 for a Fall PLC for school-based teams to more closely examine current and aspirational grading practices
- 5 learning modules, hosted in Canvas
- Teams will develop an Action Plan to scope future work
- ODE is coordinating module content; PLCs are self-facilitated
- Opportunities to collaborate across school teams

Scan here to register  
by September 17 →



- *What is your purpose for grades and grading?*
- *How do you ensure both are equitable for learners you serve?*
- *How do your current grading practices and policies align with your beliefs about teaching, learning, and equity?*



- Oregon Test Administration Manual **10/1**
  - Preliminary TAM **available now** (announcement forthcoming)
- Oregon Accessibility Manual ***Posted!***
- DTC Training Modules **10/1 (some already posted)**
- CRS **now live** for ELPA Screener and Interims; will go live for ELA, Math, and Science on **9/27**
  - ORS System Turned Off **10/28**
- Interim Assessments and Tools for Teachers ***Available Now!***
- Sample Tests Go Live **10/26**
- For summative, SEED, and NAEP testing dates, see the [Test Schedule](#)



- ODE is closed **09/06, 11/25-26, 12/25, 01/03/2022**
- Monthly OSAS Portal Maintenance **09/10** 5:00 PM PDT – **09/12** 7:00 PM PDT
- CRS Downtime **09/20** 5:00 PM PDT – **09/27** 6:00 AM PDT





OREGON  
DEPARTMENT OF  
EDUCATION

*Oregon achieves . . . together!*

# Question & Answer

## What questions are most pressing for you right now?

- Please raise your hand and we will call on you if you would like to speak into the Zoom
- Otherwise, record your questions in the chat
- If we do not answer your questions today, we will work on and publish a Q/A document from the engagement by later next week.





- A Q/A document will be posted to the [Test Administration Resources](#) page.
- Please contact Dan Farley at [dan.farley@state.or.us](mailto:dan.farley@state.or.us) if you have any subsequent questions or concerns.

Thank you!