



DTC Webinar

June 10, 2026

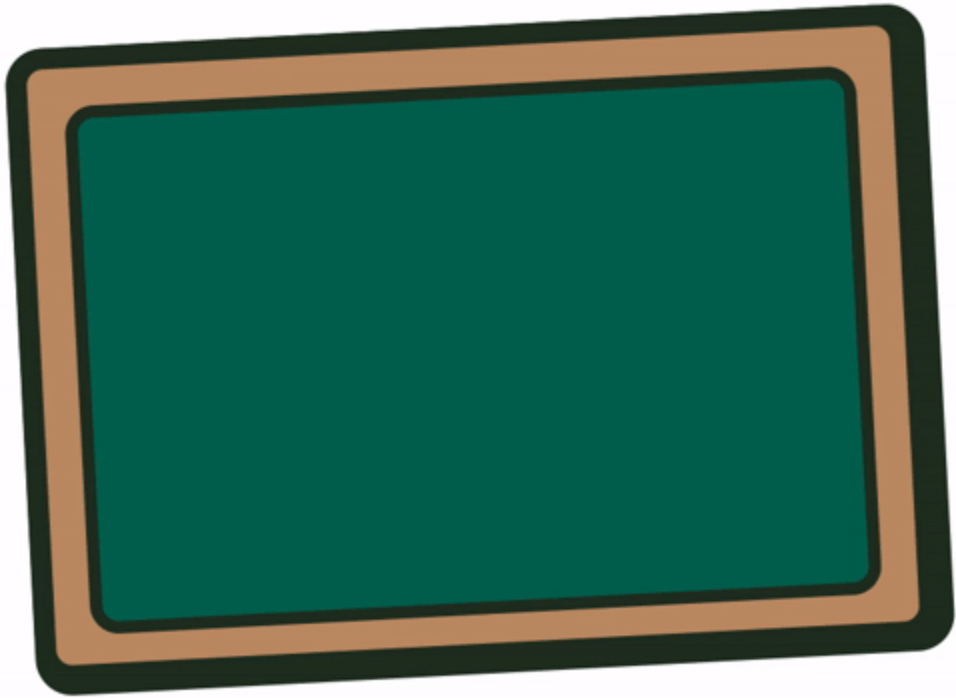
Welcome! Thank you for joining us. We will begin shortly.

Icebreaker

1. Think about a place you would like to visit.
2. Type in chat 3 clues describing that place.
3. Other participants can respond to your clues in the chat with their guesses (include name of the person that provided clues).
4. Confirm the correct answer by using a Zoom emoji or reply.



Agenda



- Webinar Housekeeping
- Updates
- Test window and Annual Notice reminder
- DTC survey and focus group themes
- Q&A



Housekeeping

Getting Started

- Today's webinar will be recorded, so please monitor your use of audio and camera.
- Please use the Q&A, not the Chat, for questions.
- Access today's slides on the [Assessment Resources page](#) (under "DTC Webinars").



Assessment Team Contacts

[Andrea V. Lockard, Ed.D.](#), Director of Assessment
Assistant Superintendent of RADAR

[Mariela Salas Bao, Ed.D.](#), Science

[Jennifer Bell](#), Math

[Tony Bertrand](#), English Language Arts and
Social Sciences

[Sody Fearn](#), K-2 Balanced Assessment

[Audrey Lingley, Ed.D.](#), SEED Survey

[Carla Martinez](#), Administrative Support

[Crys Plattner](#), Administrative Support

[Ben Wolcott](#), English Language Proficiency



Regional ESD Partner Contacts

Assessment Support

[Amy Rockwell](#)- All regions
1-800-970-8372 ext. 1 or 503-540-4470



Accountability and Collections Support

[Karen Brown Smith](#)- All regions
1-800-706-4447 ext. 3124 or 541-966-3124

[Peter Campbell](#)- All regions
1-800-706-4447 ext. 3203 or 541-966-3203

[Joe Doherty](#)- All regions (ADM, SSID, 90T)
1-800-706-4447 ext. 3140 or 541-966-3140

Guidance on chat and Q/A Feature

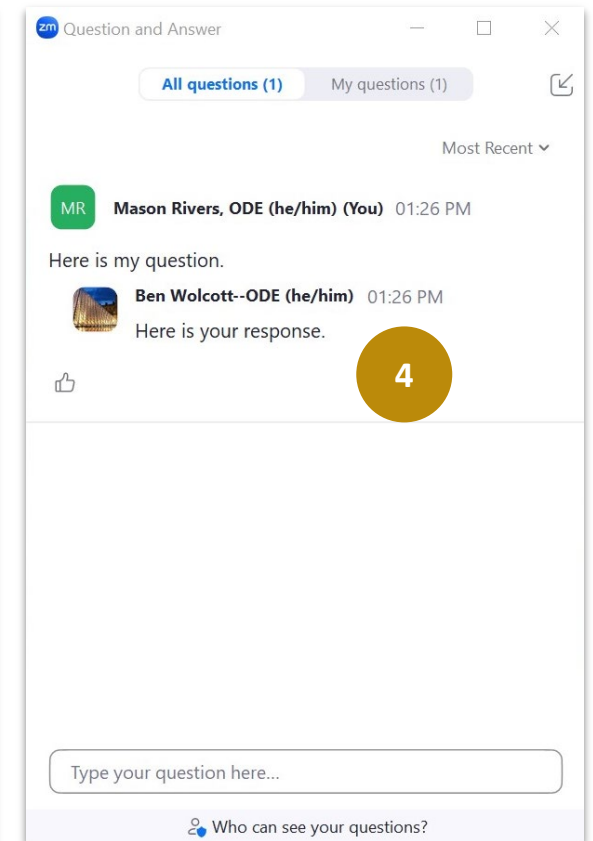
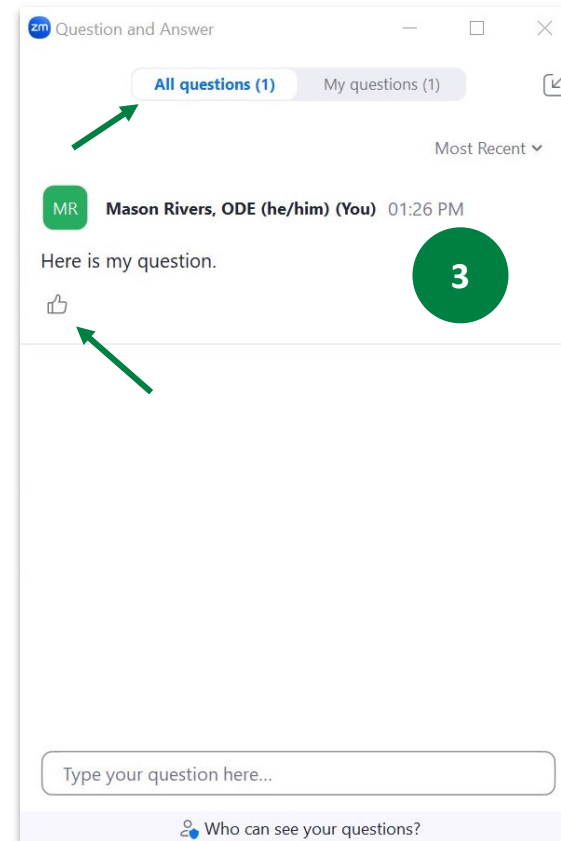
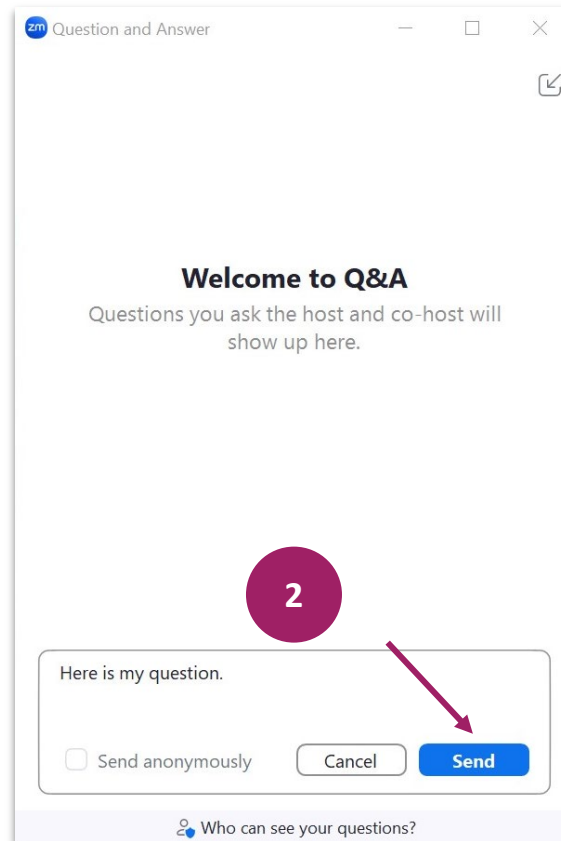
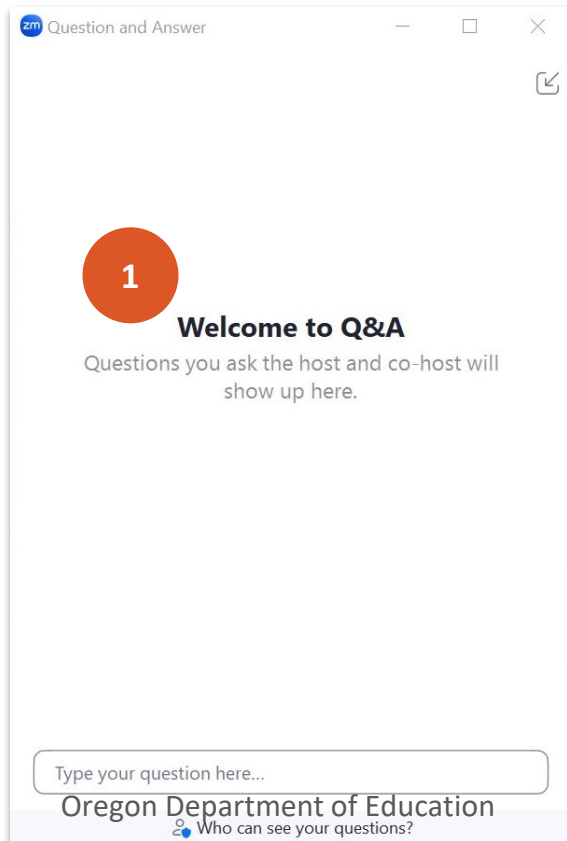
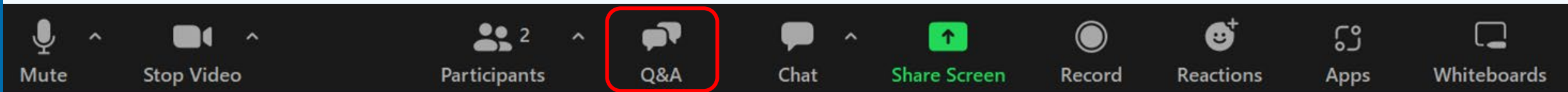
Q/A

- Use for questions related to the presentation content
- Helps the Assessment Team track and respond to questions clearly

Chat

- Use for connection and peer sharing
- A space for resources and encouragement/sharing ideas

Zoom Q&A Feature





Updates & Reminders

Updates & Reminders

- The test status change deadline has passed for ELPA Summative and Alt ELPA. No further changes can be made to test or survey records in Test Information Distribution Engine (TIDE).
- Multiple ELPA guidance documents will be combined into a single Unified ELPA Guidance document for 2026-27.
- More students had an opportunity to take the SEED Survey than in previous years. **Thank you DTCs for your continued efforts to uplift student voice in Oregon!**
 - 70% of districts had at least half of the eligible students in their district start a survey on TIDE
 - 30% of districts had at least three-fourths of the eligible students start a survey on TIDE

Dates to Remember

Topic	Date
Last day to submit extended assessments	June 12, 2026
Test and survey status change deadline for ELA, Math, Science, and SEED	June 18, 2026
DTC Summer Contact Form	June 18, 2026
Districts annually designate a District Test Coordinator (DTC) DTC and Information Only Contact Form and District signed superintendent form	June 19, 2026*
ESSA Test Administration Monitoring Year 2 Districts/ESDs self assessment	June 30, 2026
Merge ELPA Temp IDs to SSIDs	July 17, 2026

Windows to Remember

Test or Survey	Window
Assessment validation window <ul style="list-style-type: none">○ English language arts student performance○ Mathematics student performance○ Science Next Gen student performance	June 11- August 21
On-Track to English language proficiency validation	July 23- August 21
SEED Survey validation window	August 6 - September 1, 2026

Test Window and Annual Notice Published

- The [2026-27 Testing Schedule](#) is posted on the [Assessment Administration page](#).
 - The [2025-26 Testing Schedule](#) will remain available until the July system rollover.
- The **2026-27 Annual Notice** forms have also been posted to the [Assessment Administration page](#), under the Forms menu.

- 2026-27 Annual Notice for Statewide Tests
 - [Annual Notice in English](#)
 - [Annual Notice in Spanish](#)
 - [Annual Notice in Chinese \(Traditional\)](#)
 - [Annual Notice in Chinese \(Simplified\)](#)
 - [Annual Notice in Vietnamese](#)
 - [Annual Notice in Russian](#)
 - [Annual Notice in German](#)
 - [Annual Notice in French](#)
 - [Annual Notice in Tagalog](#)
 - [Annual Notice in Japanese](#)
 - [Annual Notice in Korean](#)
 - [Annual Notice in Arabic](#)
 - [Annual Notice in Chuukese](#)
 - [Annual Notice in Somali](#)
 - [Annual Notice in Ukrainian](#)

Manual and Training Materials Update Schedule

Resource	Published on or prior to
ELPA Screener Administration Manual and training materials	Mid July (depending on updates from ELPA21)
Preliminary TAM, SAM, and OAM Braille order forms (ELPA and ORExt) DTC Roadmap	Aug 1
Final TAM, SAM, and OAM Other user guides and manuals 30-day notice and opt-out forms	Oct 1
ODE training modules DTC Fact Finder	Oct 1

Learning from you: Data we gathered

Webinar Poll

During the September webinar DTCs were asked: How many roles do you hold in addition to your role as a DTC?

Who participated:

- 38 respondents

Attendance

Attendance gathered from Zoom from September to May

- 19-22% of all DTCs attend each webinar

Survey

Sent to all DTCs on webinar attendance, usefulness, and suggestions for improvement.

Who participated:

- 51 respondents.

Focus Group

Two focus group sessions held

Who participated:

- 5 DTCs
- 1–7 yrs experience

Learning from you: What we heard

- Many DTCs expressed a desire to do a good job for themselves and as a representative of their districts.
- DTCs access information in a variety of ways.
- Some DTCs experience challenges in accessing information and resources (webinar slides, newsletters, long manuals, website, etc.).
- The way DTCs access support varies depending on DTC experience and connections, many find support through the ESD partners (Amy Rockwell was named often as a helpful support).
- In both the survey and focus groups, DTCs expressed a desire for connecting and building relationships.

Learning from you: Next steps

1	Consider how to collect ongoing feedback for continuous improvement
2	Explore how to leverage existing systems to improve communication
3	Determine how to increase two-way communication with our ESD partners

Closing Out the Year (1/3)

Consult the [Key Dates for Accountability and Reporting webpage](#), especially the Assessment and Accountability Checklist (responsibilities labeled by role).

DTC Learning Session: ODE Assessment Applications Session 2

- Accountability Warehouse Extract (AWE), Secure Assessment Reports (SAR), and Achievement Data Insight (ADI)

Your [Regional ESD Partners](#) are happy to answer your questions about reporting and end-of-year responsibilities.

Oregon Department of Education

Assessment Administration Resources

DTC Learning Sessions

Fall 2025 New DTC Orientation Webinars

- Session 1: (10/27/25) Preparing for testing
 - [Session 1 Slides 10.27.25](#)
 - [Session 1 Graphic Organizer 10.27.25](#)
- Session 2: (11/17/25) Beginning testing
 - [Session 2 Slides 11.17.25](#)
 - [Session 2 Navigation Links Resources 11.17.25](#)
- Session 3: (12/15/25) Addressing testing issues
 - [Session 3 Slides 12.15.25](#)
 - [Session 3 Navigation Links Resources 12.15.25](#)
- Session 4: (2/2/26) After testing
 - [Session 4 Slides 2.2.26](#)
 - [Session 4 Navigation Links Resources 2.2.26](#)

Annual Training

- [Truncated Slide Deck 11-4-25](#)

Spring 2026 DTC Learning Sessions

- Session 1 (6/3/26): Working with ARUA
 - [Session 1 Slides](#)
- Session 2 (6/9/26): Using ODE Applications
 - Session 2 Slides (coming soon)
 - Session 2 Resource List (coming soon)

Closing Out the Year (2/3)

Test Record load schedule- See [Assessment and Accountability Checklist](#)

- Non-participation/virtual test records are loading weekly (except the week after July 4) through August 21.
- ELA and math results load after CAT and PT are submitted (within ten business days of PT completion).
- Science results load within one business day of test completion.
- June 26- Partial test records for science
- June 26- Extended assessments
- July 10- Partial test records for ELA and math

Survey record load schedule:

- SEED Survey results posted to the ADI by August 6, 2026 (by 1:00 p.m.)

Contact your [Regional ESD Partner](#) if banked tests are missing.

Closing Out the Year (3/3)


Don't forget about the [DTC Roadmap](#) as a helpful resource full of links.


June	Details
Overview	Administration windows close for OSAS ELA, Math, and Science Summative Tests, ORExt Assessments, and SEED Survey; validation window opens.
Important Events	<ul style="list-style-type: none"> Administration window closes for all OSAS ELA, Math, and Science Summative Tests and Oregon Extended Assessments SEED and Alt-SEED Surveys close Validation window opens for assessment records Annual DTC Designation Form due Districts and ESDs on rotation for Test Administration Monitoring complete and submit self-assessment
DTC Responsibilities	<ul style="list-style-type: none"> Coordinate the distribution of student assessment results to families <ul style="list-style-type: none"> May be "Before Testing Window" in next academic year Official Individual Student Reports (ISRs) can be accessed in Secure Assessment Reports Check ARUA and AWE to ensure banked tests have loaded for current Grade 11 students who tested and met the high school standard in a prior year Complete assessment record management, including resolving record errors (if managed by DTC) Review assessment-related validations (if managed by DTC) Prepare assessment reports with district and school leaders (optional)


July	Details
Overview	OSAS interim assessment and ELPA Screener administration end; TIDE goes offline.
Important Events	<ul style="list-style-type: none"> Administration window closes for OSAS Interim Assessments Administration window closes for ELPA Screener TIDE goes offline for annual maintenance
DTC Responsibilities	<ul style="list-style-type: none"> Continue assessment record management and review of assessment-related validations (if managed by DTC) Prepare assessment reports with district and school leaders (optional) Download participation report data from TIDE before TIDE goes offline (optional)


Acknowledgement of Service and Celebrations

4 colleagues are leaving their positions at the end of the 25-26 school year. Let's celebrate their service!

 **Rachel Allyne Aazzerah** | Reynolds SD | 15 years | **One Tip:** Network. Find a group of experience DTCs to connect with during the good times and the rough times. Don't be afraid to ask questions. | **What's next:** New career opportunity.

 **Rebecca Brainerd** | Hermiston SD | 4 years | **One Tip:** You might be the only DTC in your district, but you are far from alone. Get connected with DTCs across the state. Learn from them, share resources, ask questions - get really comfortable asking questions! | **What's next:** I am going to work for Edupoint as the new Synergy Assessment Product Leader.

 **Karen Brown Smith** | Intermountain ESD | 20+ years | **One Tip:** Get to know your Regional ESD Partners, you don't have to steer the ship alone. | **What's next:** Spend time with family.

 **Amy York** | Mitchell SD | 4 years | **One Tip:** Do not be afraid to ask questions. | **What's next:** I don't know yet.



Q & A

No questions were submitted for this webinar.
Submit questions via [Smartsheet form](#) or by emailing the [Assessment Team](#).

Questions?

Concerns?

Recommendations

.



Next Steps and Adjournment

- A Q/A document will be posted to the [Assessment Administration Resources](#) page.
- Please contact the [ODE Assessment Team](#) if you have any additional questions or concerns.

Thank you!

Have a great summer break!

