



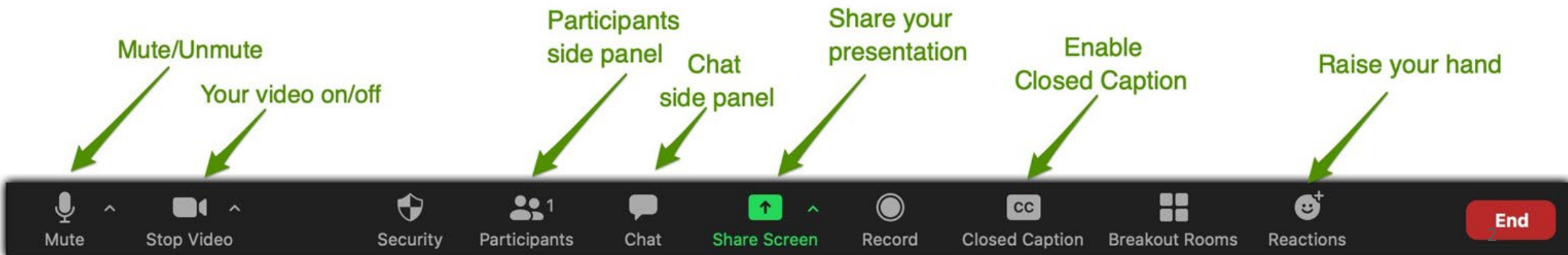
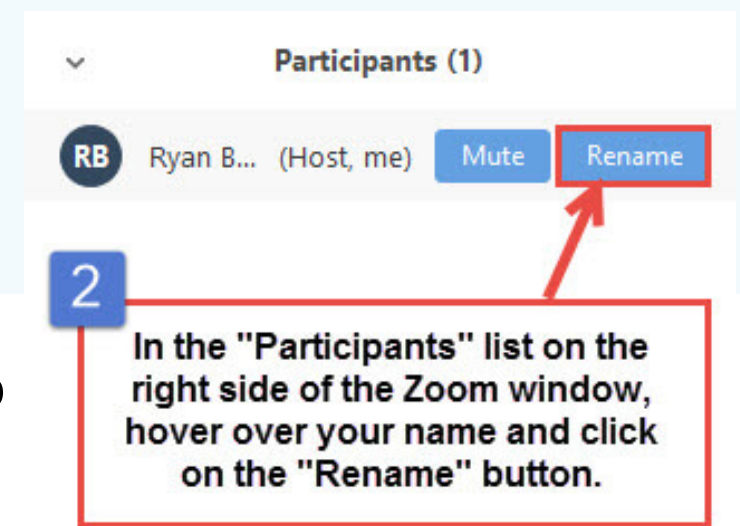
DTC Webinar

September 14, 2022

Welcome! Thank you for joining us. We will begin shortly.

Zoom Features

- This meeting will be recorded – monitor your use of audio and video.
- Use the Zoom features to chat or react (raise hand, clapping, etc.).
- Please use the rename function to identify your district; you may add your preferred pronouns, as well.



Assessment Team Contacts

[Dan Farley](#), Administrator of Research and Accountability

VACANT, Director of Assessment

VACANT, Science

[Andy Byerley](#), Math

[Eric Gillis](#), Senior Research Analyst

[Crys Plattner](#), Administrative Support

[Greg Houser](#), Senior Research Analyst

[Sody Fearn](#), K-2 Balanced Assessment

[Carla Martinez](#), Administrative Support

[Ben Wolcott](#), English Language Proficiency

[Mason Rivers](#), Special Education (*start date 9/26*)

[Tony Bertrand](#), English Language Arts and Social Sciences



Welcome New DTCs!

- Check out the [DTC Roadmap!](#)
- Weekly Assessment & Accountability (AA) [Update](#) Email and [Archive](#) site for historical updates
- Bookmark the [Test Administration](#), [Training Materials](#) and [Communication](#) pages
- Get to know your Regional [ESD Partners](#)
 - Karen Brown Smith
 - Peter Campbell
 - Amy Rockwell

Calendar of 2022-23 Webinars

2022-23 DTC Trainings

- Tues. 11-1-2022 3:00 - 4:30 PM
- Wed. 11-2-2022 9:00 - 10:30 AM
- Thurs. 11-3-2022 3:45 - 5:15 PM

You only need to attend one.

DTC Webinars

(second Wednesday of each month from 10:00 - 11:00 AM)

- Oct. 12, 2022
- Nov. 9, 2022
- Dec. 14, 2022
- Jan. 11, 2023
- Feb. 8, 2023
- Mar. 8, 2023
- Apr. 12, 2023
- May 10, 2023
- June 14, 2023

New DTC Orientation Webinars

Over 50 DTCs are new to their role in 2022-23!

ODE has produced a [DTC Roadmap](#) to guide DTCs through OSAS administration.

New DTC Orientation Webinars:

- September 29, 2022
- October 13
- October 27
- November 10
- November 17

Thursdays, 4-5pm PT

Acronyms

| Acronym | Full Name |
|-----------|---|
| ODE | Oregon Department of Education |
| ESD | Education Service District |
| TIDE | Test Information Distribution Engine |
| CAI | Cambium Assessment Incorporated |
| OSAS | Oregon Statewide Assessment System |
| ELA | English Language Arts |
| ELPA | English Language Proficiency Assessment |
| CRS | Centralized Reporting System |
| DTC / STC | District Test Coordinator / School Test Coordinator |
| TA | Test Administrator |

2022-23 OSAS Reminders

- **All Federal and most state assessment requirements are in place for 2022-23**
 - *OSAS Statewide Tests and ELPA*
 - *Local Performance Assessment Requirements (Division 22)*
- **Assessment of Essential Skills is Suspended Through 2023-24 (SB 744)**
- **SEED and Alt-SEED Survey Pilots Continue**
- **Statewide access to ELA, Math, and Science Interim Assessments, and Tools for Teachers (*Training Requirements*)**
- **Accessibility Updates**
 - *Text-to-Speech (TTS): ELA Performance Task - Designated Support*
 - *Certain math manipulatives are allowable non-embedded designated supports*
 - *NEW: Spanish TTS supported on the OSAS Math Test*
- **10th Grade Students can “challenge up” (f/k/a “target up”)**

Assessment Requirements for 2022-23

| Assessment | Required Grades | Basis of Requirement |
|--|--|-------------------------------------|
| Mathematics | 3 – 8 and 11 | ESSA, ORS 329.485 OAR 581-022-2100 |
| English Language Arts | 3 – 8 and 11 | ESSA, ORS 329.485, OAR 581-022-2100 |
| Science | 5, 8, and 11 | ESSA, ORS 329.485, OAR 581-022-2100 |
| Social Sciences Performance Tasks <i>(optional)</i> | 5, 8 and high school | ORS 329.485, OAR 581-022-2100 |
| English Language Proficiency (ELPA21), including Alt ELPA | Kindergarten – 12 | ESSA, OAR 581-022-0610 |
| Kindergarten Assessment* | Kindergarten | OAR 581-022-2130 (pilot) |
| National Assessment of Education Progress (NAEP) | 4 and 8 | ESRA, Title III, sec. 303, ESSA |
| Nationally-Normed College Entrance Practice Examination | Must be offered at Grade 10 | ORS 329.488 |
| Local Performance Assessments | 3 – 8 and at least once in high school | OAR 581-022-2115 |

2022-23 Test Schedule

Statewide Summative Content Assessments

The test window for the statewide summative content assessments applies both to the online General Assessments and to the Oregon Extended Assessment.

| Assessment | Assessed Grades | Test Window |
|---|-----------------|-------------|
| English Language Arts and Mathematics ^{A, B} | 3-8 | 3/7 – 6/2 |
| Science ^{A, B} | 5, 8 | 3/7 – 6/2 |
| English Language Arts, Mathematics, and Science ^{A, B} | 11 ^C | 1/10 – 6/2 |

Statewide Summative English Language Proficiency Assessment Test Window

| Assessment | Assessed Grades | Test Window |
|-----------------------------|---------------------------|-------------|
| ELPA Summative ^A | K, 1, 2-3, 4-5, 6-8, 9-12 | 1/10 – 4/7 |
| Alt-ELPA (projected dates) | K, 1, 2-3, 4-5, 6-8, 9-12 | 2/1 – 3/24 |

Remote Statewide Summative Assessments

| Assessment | Assessed Grades | Test Window |
|---|---------------------------|-------------|
| Remote English Language Arts, Mathematics | 3-8 and 11 | 4/11 – 6/2 |
| Remote Science | 5, 8, and 11 | 4/11 – 6/2 |
| Remote ELPA | K, 1, 2-3, 4-5, 6-8, 9-12 | 4/11 – 4/28 |

Kindergarten Assessment (Pilot) Test Window

| Assessment | Assessed Grades | Test Window |
|--|-----------------|---|
| OKA (volunteer classrooms only—not required statewide) | Kindergarten | Locally determined (contact ODE for assistance) |

Student Educational Equity Development Surveys (SEED and Alt-SEED Surveys) (optional)

| Survey ^D | Assessed Grades | Test Window |
|------------------------|-----------------|-------------|
| SEED & Alt-SEED Survey | 3-8 | 3/7 – 6/2 |
| SEED Survey | 9-11 | 1/10 – 6/2 |
| Alt-SEED Survey | 11 | 1/10 – 6/2 |

National Assessment of Educational Progress Test Window

| Assessment | Assessed Grades | Test Window |
|------------------------------|--|--|
| NAEP (Selected schools only) | 13-year-olds across grades 4,8, and 12 | 10/10 – 12/16/22 2/6 – 2/17 and 3/20 – 4/14 |

Assessment Participation and Reporting

- Student participation in Oregon's state summative assessments remains a requirement in federal law - 95% for all students and every student group (ESSA, Section 1111)
- Division 22 requires districts to make state summative assessment participation available to all students
- ODE is working to develop materials to support districts in explaining how to best leverage the resources in our balanced assessment system; they are not feasible without sufficient participation, however.
- Reporting processes will include references to strength areas, as one aspect of our system that is important is to identify possible models of success to replicate

Senate Bill 744

- Final SB 744 Report, [Community-Informed Recommendations for Equitable Graduation Outcomes](#), was submitted to the Legislature and State Board on September 1, 2022
- The report does not denote any formal action that would change policy; any policy changes would need to come from the Legislature and/or State Board
- The Assessment of Essential Skills policy remains suspended until 2023-24
- Colt and Dan will present to the Senate Education Subcommittee on 9/21/22, then to the State Board of Education on 9/22/22

Nationally-Normed College Entrance Practice Examination

- ODE is finalizing contract details with ACT to provide the PreACT
- Test window TBD in 2022; anticipate a fall test window in October and spring test window in March in future years
- Only districts who had a contract in place with another nationally-normed college entrance practice examination, and administered that exam in 2007-08, are eligible for a waiver

Alt ELPA

New test that will be administered in 2022-23, for students with English learner status who also experience most significant cognitive disabilities.

- **Will require collaboration** among district personnel with experience in assessment, English language development, and special education
- **Resources** in development: administration manual, eligibility decision tree, family-facing resources, Test Administrator training, and more
- **Sample test** available on October 17 (delayed from previous September target)
- **Training materials** likely available in October

Primary contact: Ben Wolcott (interim), transitioning to Mason Rivers (Special Education Specialist)

Kindergarten Assessment

- The KA has been suspended
- [Early Learning Transition Check-In: A Collaborative Community Engagement](#)
- Approximately 15 schools have participated with family interview pilot; feedback sessions will be conducted
- Feedback sessions and larger community engagement will determine implementation for Fall 2023

SEED Survey Pilot Continues

- **SEED Survey & Alt-SEED Survey are district optional resources in 22-23**
 - Participation is customizable

***NEW:**

- **Vietnamese SEED Survey available in TDS**

**These changes apply to SEED Survey only (not-Alt SEED)*

Questions?

Concerns?

Recommendations?



Quick Reminders

- Oregon Test Administration Manual **10/3**
 - *Preliminary TAM Available Now*
- Oregon Accessibility Manual *Posted!*
- DTC Training Modules **10/3 (some already posted)**
- Interim Assessments and Tools for Teachers *Available Now!*
- Sample Tests Go Live **10/25**
- A full list of scheduled downtimes can be [on the OSAS portal](#)

Next Steps and Adjournment

- A Q&A document will be posted to the [Test Administration Resources](#) page.
- Please contact [Dan Farley](#) if you have any additional questions or concerns.

Thank you!