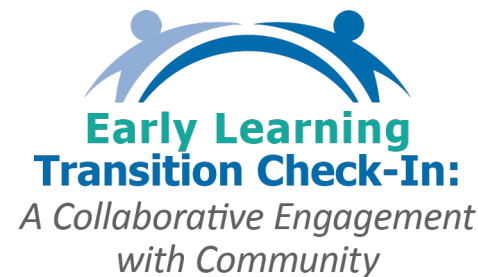


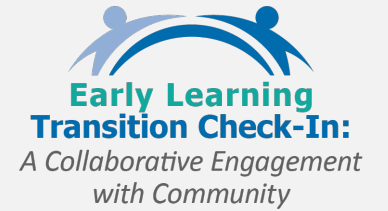
Family Conversation

Early Learning Transition Check-In: A Collaborative Engagement with Community

Informational District Session
November 2023



About Us



Oregon Department of Education (ODE)

ODE works in partnership with school districts, education service districts, and community partners.

MISSION: Oregon Department of Education fosters equity and excellence for every learner through collaboration with educators, partners, and communities.



Department of Early Learning and Care (DELIC)

The Department of Early Learning and Care fosters coordinated, culturally appropriate, and family-centered services that recognize and respect the strengths and needs of all children, families, and early learning and care professionals.

MISSION: All children, families, early care and education professionals, and communities are supported and empowered to thrive.



Learning Outcomes



History of Oregon's Kindergarten Assessment

Early Learning Transition Check In

- Centering Equity
- Project Goals
- Pilot Component
- Overview of Phases of Preparation and Planning

Previous Version of OKA

Early Literacy - Early Math - Approaches to Learning

Quick Write

- What do you remember about it?
- What was useful about it?
- What was confusing about it?



Concerns about the OKA

Confusion about
the purpose

Concerns about
the timing

Concerns about
the interpretation
and reporting of
results

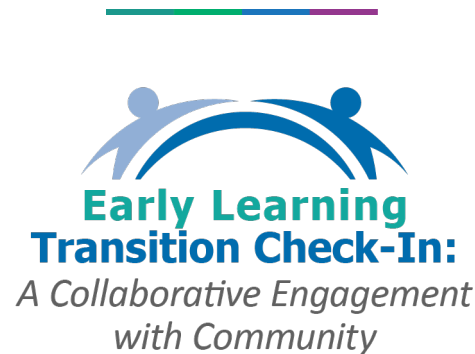
Concerns about
the cultural
responsiveness

Concerns about
how schools
engage students
and their families

Concerns about
not assessing
the whole child

Shift from Oregon Kindergarten Assessment into Early Learning Transition Check-In

A Collaborative Engagement with Community



Oregon's Growing Diversity

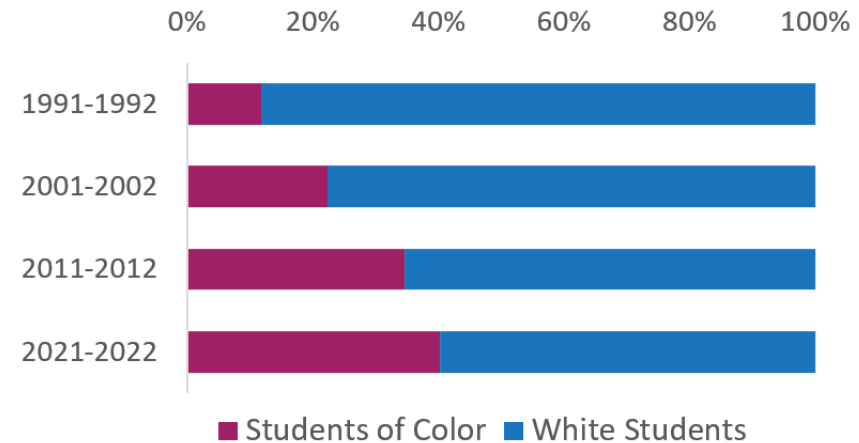
553,012 K-12 Students and 20,000 PreK*

More than 300 languages spoken

~40,000 Kinder Fall 2023

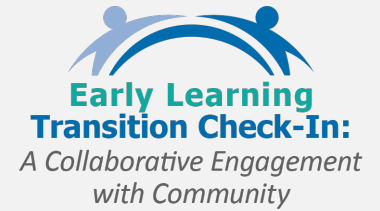
17 Early Learning Hubs

Includes Statewide Tribal EL Hub



2022-23 Data

Shift from OKA into Early Learning Transition Check-In



A project to redesign the Oregon Kindergarten Assessment (OKA).

- ODE and DELC are working in collaboration.
- Replacing the OKA with a reimagined way of collecting information
- Shifting focus away from children's "readiness" for Kindergarten.
- Expanding focus beyond children's academic performance.

Creating a data collection process to look at how prepared educators, schools, districts, communities, and systems are to support ALL children and families.

Shift from Kindergarten Assessment into Early Learning Transition Check-In



Previous OKA

How:

- Collect student level academic data
- Teacher observation during first week of school

To:

- Provide a snapshot of the skills children had as they entered kindergarten

For:

- State and regional level data gathering to understand children's skills, opportunities for growth

ELTC

How:

- Family Conversation between child's family and Kindergarten educator

To:

- Build relationship, connection and foster a sense of belonging
- Gather information about the families early learning experiences

For:

- Educators to learn about the student and family
- Inform local, regional and state-level decisions about Oregon's Early Learning

Family Conversation

- Each fall, Kindergarten educators will meet individually with each family entering their classes.
- The Family Conversation is a tool to support educators' conversations with families.

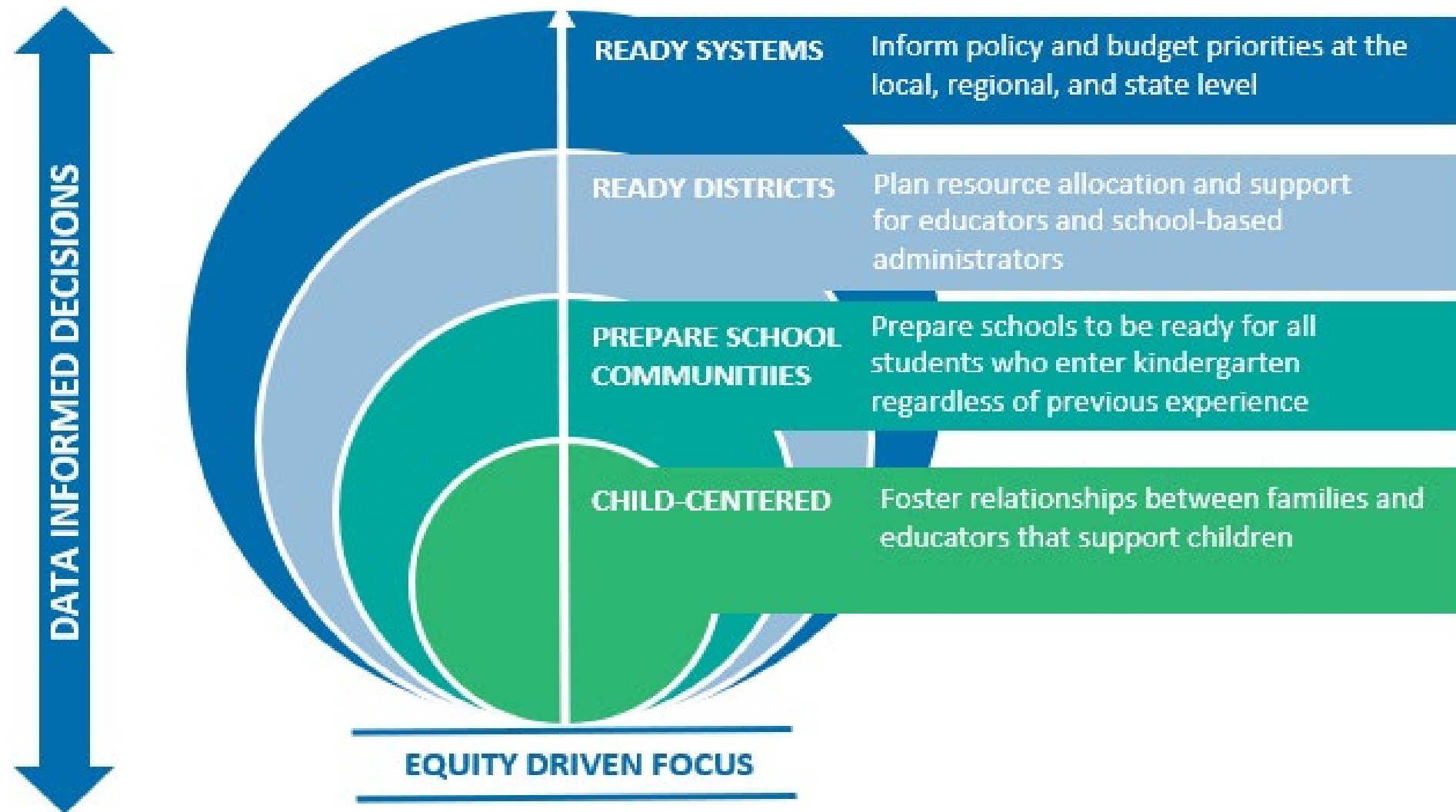


What it does:

- Collects information about families' early learning and care experiences
- Builds relationships among educators, parents/caregivers, and children

How it advances equity:

- Takes a more holistic view of children
- Provides context about families
- Shifts focus off children's "readiness"



What story is the data telling us?



- Families value the opportunity to share about their child
- Educators value the opportunity to meet with families
- Transformational shift

Educator Quotation



"I am so excited about this shift. We have done family conversations for years, and the impact it has and tone it sets from the start is incredible. I love listening to families tell us about their hopes and dreams and fears and welcome them to our school family! Can you imagine the cultural shift we could make statewide when all families entering school have an opportunity to meet with their school/teachers one-on-one from the start. So exciting!"

Family Quotation

“Me sorprendio porque con ninguno de mis otros hijos me llamaron para hacerme estas preguntas de parte de un maestro, y este hijo que está en kindergarten es el tercer niño, y aunque ya la conozco a la maestra, nunca había estado tan cerca del niño.” (English: “Also surprised. Hadn’t called me for my other two kids. I know the teacher, but I’ve never been in relationship like this with them.”)

“I was nervous, but also excited to meet her and tell her about my child.”

“I think the holistic picture is so important to support a child’s ability to learn.”



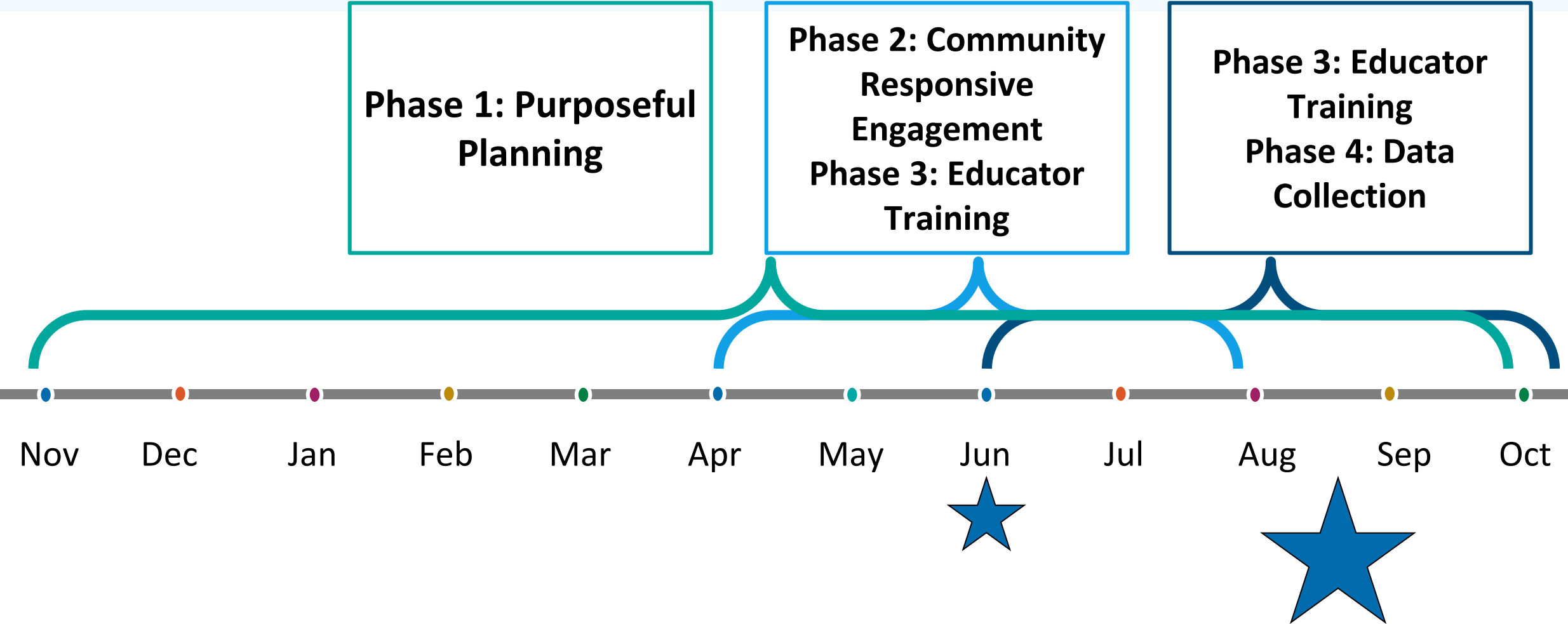


Set Up for Success

Four Phases of Implementation of Family Conversation

Fall 2023 Pilot

Fall 2023 Pilot: Early Learning Transition Check-in Timeline



Set Your Community up for Success

ELTC Action Steps: Phase 1: Purposeful Planning (Fall 2023)

Link ELTC to other initiatives



Set Your Community up for Success

ELTC Action Steps: Phase 1: Purposeful Planning (Fall 2023)

Form District/School Team

- Define Roles/Responsibilities
- Communicate Often



Set Your Community up for Success

ELTC Action Steps: Phase 1: Purposeful Planning (Fall 2023)

Involve Community

- Liaisons
- Hubs/Preschools/Care Centers
- Previous Kinder families



Set Your Community up for Success

ELTC Action Steps: Phase 1: Purposeful Planning (Fall 2023)

Create district schedule*



Supports

For ALL Schools:

OAR 581-022-0102 30b: Instructional time shall include: (B) Time that a student spends in statewide performance assessments

OAR 581-022-2320 6e: Upon approval by the local school board, a district may include in its calculation of instructional time, up to...30 hours for parent teacher conferences

Title I-A Schoolwide Programs:

Activity must be identified in the school's needs assessment

***Jumpstart Kinder funds:**

Funds could be used for staff time for outreach to invite families to conversations, as well as time to help support the conversations (translation, activities for kids etc).

Sample Schedules

Day	Schedule
Day 1	1:1 Family Conversations
Day 2	1:1 Family Conversations
Day 3	½ Class Full Day "warm-up" <ul style="list-style-type: none">• Introduce and teach basic school routines• Begin community-building
Day 4	½ Class Full Day "warm-up" <ul style="list-style-type: none">• Introduce and teach basic school routines• Begin community-building
Day 5	First Full Day of Kindergarten for All Students

Sample Schedules

Day	Morning	Afternoon
Day 1	½ Class; Group 1	Family Conversation
Day 2	½ Class; Group 2	Family Conversation
Day 3	½ Class; Group 1	Family Conversation
Day 4	½ Class; Group 2	Family Conversation
Day 5	Entire Class (Full day if afternoon family conversations are not needed)	Family Conversation

Set Your Community up for Success



ELTC Action Steps: Phase 2 Culturally Responsive Engagement (Spring-early Summer 2024)

- ☐ Advertise at other initiatives
- ☐ Power of Word of Mouth
- ☐ Community Responsive Scheduling
- ☐ Scheduling Interpreters
- ☐ Send out confirmation with time and questions in English and home language
- ☐ Communicate via mail, flyers, website/Communication Apps/phone calls

Set Your Community up for Success

ELTC *REQUIRED Action Steps: Phase 3 Educator Training (Summer 2024)

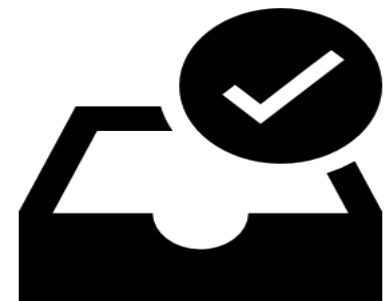
- ☐ Staff Training
 - ☐ ODE's Engaging Equity Module
 - ☐ Webinar: Asynchronous
 - ☐ Review Family Conversation Facilitation Guide
 - ☐ Attend **ONE** LIVE Q & A Session: August 2024
 - ☐ Print out Note Taking Forms
 - ☐ Training Verification Form
- ☐ Confirm Family Conversation times
- ☐ Plan activities for children



Set Your Community up for Success

ELTC **REQUIRED** Action Steps: Phase 4 Data Collection/Reporting (Fall 2024)

- ☐ Conduct Family Conversations
- ☐ Seek **8-Digit** State Student Identification (SSID)
- ☐ Schedule Time for Data Input



What to expect from ODE and DELC?

Communication via Assessment and Accountability Listserv

Early Spring Communication: Training

All Training Materials by June 1, 2024

Required Q & A Sessions

Before you leave, please complete this brief [Exit Survey](#)

Thank you

For more information, contact PreKCheckIn@ode.oregon.org

