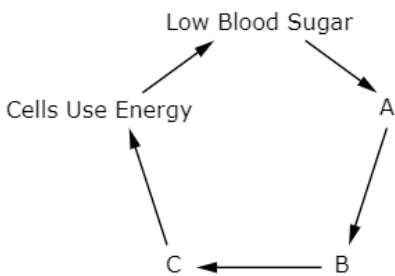



## High School OSAS Science Sample Test Exploratory Scavenger Hunt

**Student Directions:** Your teacher will guide you into the Oregon Statewide Assessment System (OSAS) in Science, known as “OSAS Science.” Log into the OSAS Science High School Sample Test. Your teacher might want to discuss the meaning of some Vocabulary words (***bold, italics***) in this Scavenger Hunt.

This Scavenger Hunt is practice to get ready to take the OSAS Science test. Have fun learning how to ***navigate*** the online sample test and how to **interact** with the sample questions. Read the information within each question, watch **Tutorials**, and respond with computer tools.

**Explore how you could use the Tools when you take OSAS Science.**

<p>Question 1</p> 	<ul style="list-style-type: none"> <li>• Examine the information on the left side of your screen</li> <li>• <b><i>Expand</i></b> the information on the left or the <b><i>Parts of the Question</i></b> on the right using the <b>← → Arrows</b>.</li> <li>• Find the Context Menu ☰ on the left side of the screen.</li> <li>• Try highlighting. What colors are in the <b><i>Highlighter Tool?</i></b></li> <li>• <b><i>Scroll</i></b> to the bottom of the information to find <b><i>Your Task</i></b>.</li> <li>• In Part A, practice using the simulation. How are the trash can symbols to the right of the table used?</li> </ul>
<p>Question 2</p> 	<ul style="list-style-type: none"> <li>• Can you play the videos embedded in the images?</li> <li>• Right click or click on the context menu in the upper right hand corner.</li> <li>• What tutorials are provided for question 2?</li> <li>• In Part D, use the drop down menus to select labels for the x and y-axes.</li> <li>• Practice drawing and deleting lines on your graph.</li> </ul>

## High School OSAS Science Sample Test Exploratory Scavenger Hunt

### Question 3

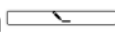


- Do you recognize the Interaction Types in this question: Multiple Choice, and Multi-Select Interaction Type. Which type has only one correct answer?
- Try using the ~~abc~~ Strikethrough Strikethrough Tool. Can you use this tool to narrow down the possible answers to a multiple-choice question that you think is most likely correct?

### Question 4

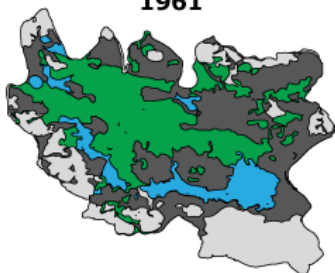
**Table 2. Days to First Flowering**



Year Seed Sample Collected	Days to First Flowering
1997	59
2004	47

- Explore the parts of the question. Can you find a new interaction type, Hot Text?
- How does pencil icon  work? You will need to click on the pencil icon and then click on the statement you wish to select. Try scrolling the left hand side of the screen if you can't see the lightly outlined text. Select the text piece of text evidence that supports the inference you made in part B from the lightly outlined text on the left hand side of the screen.
- Have you ever been unsure of an answer? Try using the Mark for Review Tool for this question. You will be given a reminder to check your answer before completing the test.

### Question 5

**1961**



- Have you seen this type of Interaction Type before in the Sample Test?
- Save your sample test by selecting the save icon in the upper left hand corner.
- If you have text to speech assigned to you, select the  Speak Question and Options button in the context menu .



**OREGON**  
**DEPARTMENT OF**  
**EDUCATION**

*Oregon achieves . . . together!*

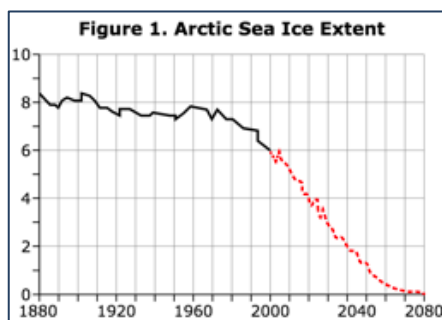
## High School OSAS Science Sample Test Exploratory Scavenger Hunt

### Question 6

Delete Add Point Connect Line

- In Part D, practice using the **Delete**, **Add Point**, and **Connect Line** buttons. Can you use the **Connect Line** button to draw your line without using the **Add Point** button?

### Question 7





- How does the “Equation Response” Interaction Type work? What do you think of the online keyboard? Note that this is not a calculator. Can you find the calculator in the tool bar?
- Were you able to use the drop-down menu to make your prediction?

### Question 8

**Table 1.  
Electromagnetic  
Spectrum**

Type	Wavelength
Gamma	<0.01 nm
X-ray	0.01–10 nm
Ultraviolet	10–400 nm
Visible	400–700 nm
Infrared	700 nm–1 mm
Microwave	1 mm–1 m
Radio	>1 m

- Use the pencil icon  to select information from Source 4 on the left hand side of the screen. You will need to click on pencil icon and then click on the statement you wish to select. The statement you select will appear in place of the interaction tool icon.
- Practice using the reversing button  to edit your selection.

This is the last Question in the Sample Test.

Press End Test  when you are finished.




**OREGON**  
DEPARTMENT OF  
EDUCATION

*Oregon achieves . . . together!*

## Congratulations, you reached the end of the test!

If you need to review your answers, select the question number you wish to review. A flag icon appears for any questions that you marked for review.

 = You have marked questions. Review these questions before submitting your test.

1

2

3

4



5

6

7

8

### Next Step:

When you are done reviewing your answers, select **Submit Test**. You cannot change your answers after you submit the test.

Go back to the question(s) you have marked for review and make any answer changes that you want.

Submit Test

Great work! You finished the OSAS Science Assessment Sample Test Scavenger Hunt!



OREGON  
DEPARTMENT OF  
EDUCATION

*Oregon achieves . . . together!*