

# RESEARCH BRIEF



Office of Research, Assessment, Data, Accountability, and Reporting



## FAST FACTS: Sense of Belonging by Grade Band and Student Group

**Definition:** Students' social and emotional connection to school.

ODE calculates a **Sense of Belonging – General Belonging domain score** among 3<sup>rd</sup>-11<sup>th</sup> graders that has a possible range of 0 to 100. This score is based off students' responses 7 items on the [SEED Survey](#) (on a 4-point scale with response options being: Strongly disagree, Disagree, Agree, Strongly agree). Items are:

### 3<sup>rd</sup>-11<sup>th</sup> Grade Items

Think about this school year and the people at your school. How much do you agree with each statement?

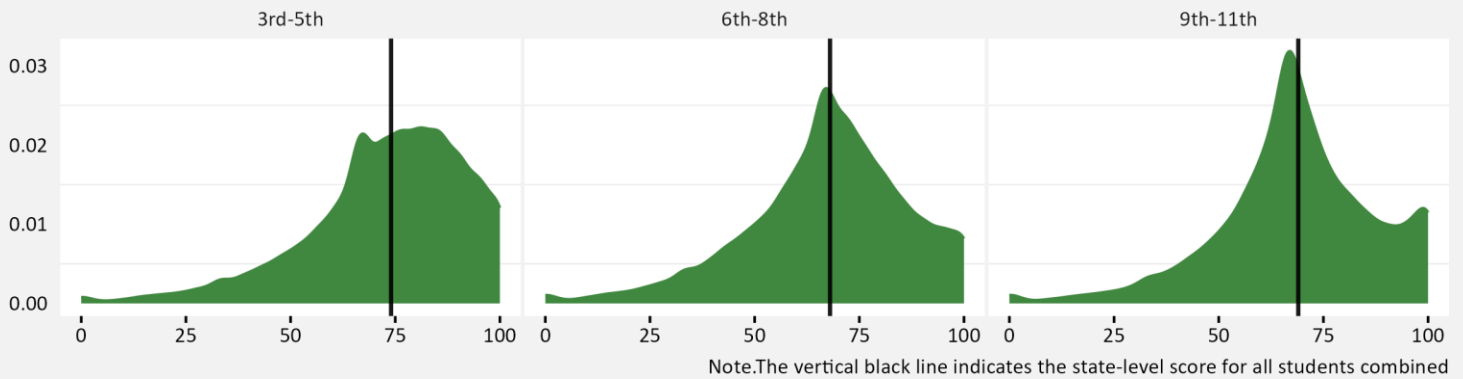
- I have friends at school.
- My classmates care about me.
- I feel welcome at my school.
- There are adults at my school who care about me.
- I feel safe talking with adults at my school.
- I feel safe talking with students at my school.
- I like going to school.

**6% of students had a score of 100,**  
meaning that they strongly agreed  
with all items

**<1% of students had a score of 0,**  
meaning that they strongly  
disagreed with all items

**Sense of Belonging dropped from elementary to middle school,  
and increased slightly from middle to high school.**

**Figure 1: Distribution of Student Domain Scores**

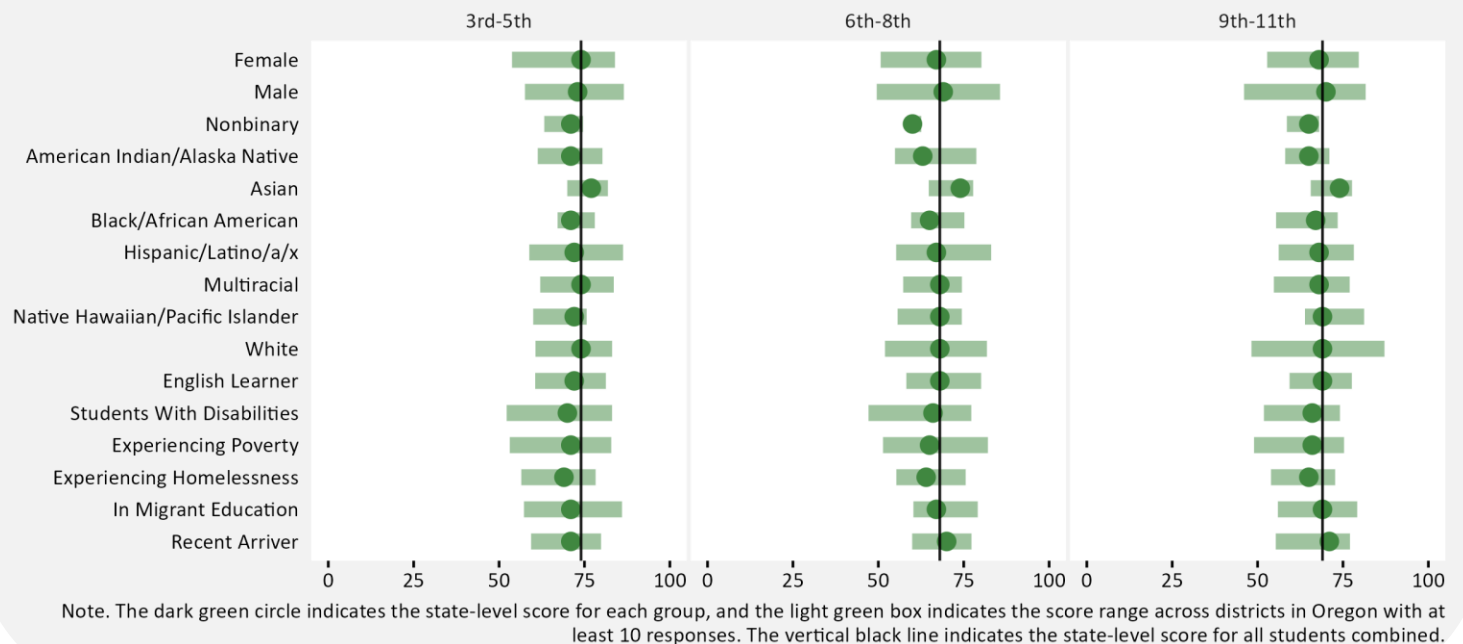


Grade Band	State Domain Score	Equivalency
3 <sup>rd</sup> -5 <sup>th</sup>	74	Roughly equivalent to responding 'Agree' to 6 items and 'Strongly agree' to 1 item
6 <sup>th</sup> -8 <sup>th</sup>	68	Roughly equivalent to responding 'Agree' to all items
9 <sup>th</sup> -11 <sup>th</sup>	69	Roughly equivalent to responding 'Agree' to all items

**Some student groups consistently had lower domain scores across all grade bands:**

- Nonbinary students
- American Indian/Alaska Native students
- Black/African American students
- Hispanic/Latino/a/x students
- Students with disabilities
- Students experiencing poverty
- Students experiencing homelessness

**Figure 2: Domain Score by Student Group**



## Resources

### SEED Survey

- [SEED Survey](#)
- [Understanding SEED Domain Scores](#)
- [2024-2025 State Level SEED Survey Domain Score Data](#)
- [2024-2025 District Level SEED Survey Domain Score Data](#)

### Additional Resources

- [Student Success Plans](#)
- [Standards and Instruction](#)
- [Transformative Social and Emotional Learning](#)
- [Mental Health Resources](#)
- [Signs of Stress and Distress: Guidance and Resources](#) (available in multiple languages)
- [Every Student Belongs](#)
- [Health in Education](#)