



# STEM Education Plan Revision Engagement

2nd Engagement Opportunity: April 28 - May 20

A group of diverse young children, including a girl in a pink shirt and a boy in a blue shirt, are sitting around a table, smiling and engaged in a collaborative activity. The background is a bright, out-of-focus classroom setting.

# Oregon's STEM Education Plan 5-year Revision - Opportunity for Feedback -

# Engagement Purpose

## **Initial Engagement:**

Partners emphasized the need for stronger alignment, clearer pathways, and more actionable tools.

## **Next Steps:**

[We] are now seeking more targeted input to ensure the plan is practical, partner-informed, and a useful tool across Oregon's STEM ecosystem.



# Engagement Process

<b>Who</b>	Employers, District Staff, University Staff, ESD Staff, PK-20 Educators, Students, Community Partners, etc.
<b>Why</b>	To ensure the plan clearly defines how partners can connect and align their work with statewide PK–20 goals, making the final draft a functional tool for all members of the STEM community.
<b>How</b>	Live virtual presentation with a community survey, or a self-guided survey.

# STEM Investment Council Priorities

The Council has identified **2026-30 STEM Education Plan** Revision Draft Priorities:

- A condensed strategic plan highlighting the vision, goals, and assessment metrics.
- Establishing a rigorous baseline of metrics we measure and are accountable for.
- Reporting on those metrics periodically via a dashboard on the STEM IC website.



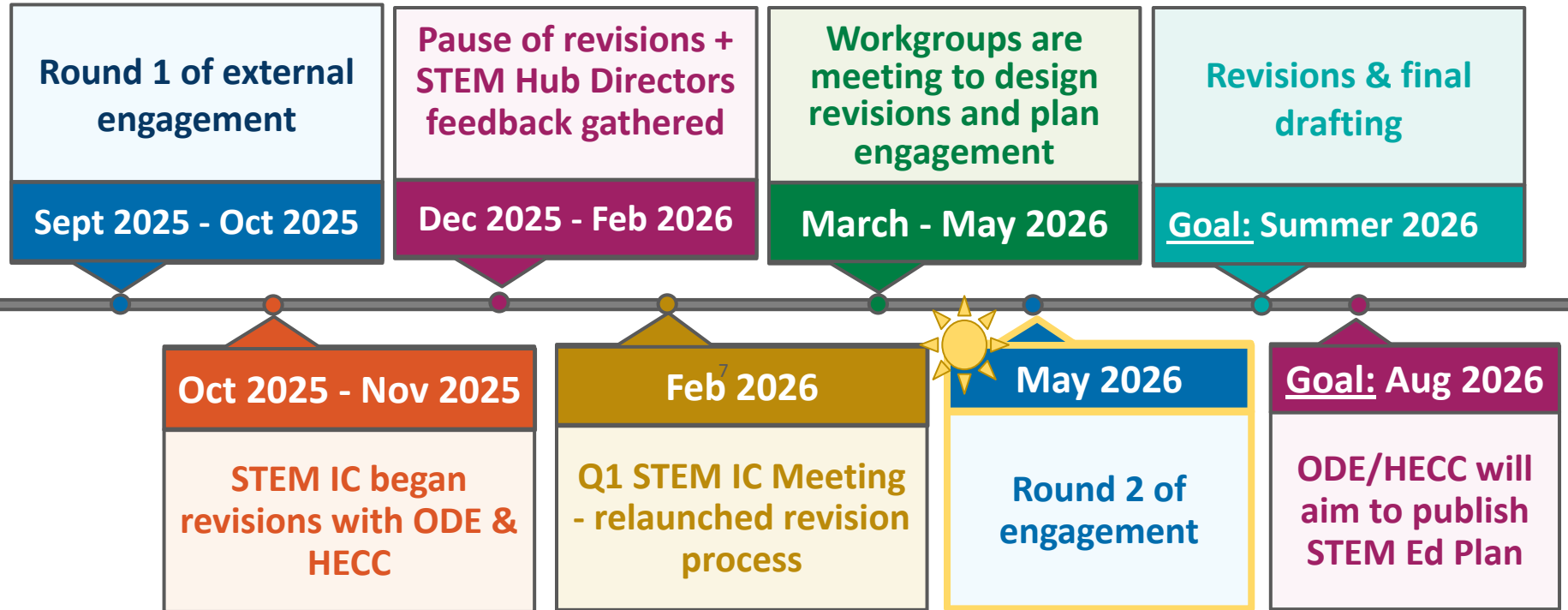
# Seeking Feedback

---

[We] are especially looking for feedback on:

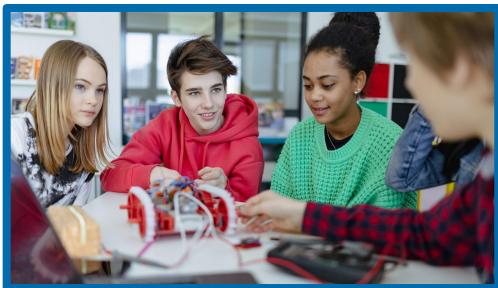
- **Clarity & Relevance:** Does the purpose, vision, and mission reflect shared priorities across PK–20 educational systems and employer partners?
- **Equity & Accountability:** Is the proposed equity language meaningful, actionable, and aligned to the work being done in the education sector as you understand it?
- **Usability:** Are there things missing from this section that do not capture equity work in the education sector?
- **Connection & Alignment:** Do the goals help you see where and how your work connects to statewide efforts?

# STEM Education Plan Revision Timeline



# Purpose

---



This STEM Education Plan serves as a **roadmap and clear invitation for Oregon's STEM Ecosystem partners to activate systems-level change**. By embedding STEM learning as a core strategy across education, this plan aligns resources, strengthens pathways, and drives meaningful improvement in student outcomes, instructional practices, and workforce alignment. Through shared accountability and defined roles across all partners, it advances educational equity and long-term transformation for every learner.

# Vision

---

We envision a future where an increase in STEM participation, *rooted in a deep **sense of belonging** and learning that **connects to students' interests and experiences***, expands workforce opportunity, drives innovation, and empowers students from all backgrounds to thrive. The STEM Education Plan serves as the bridge between employers, educators, and communities to align resources, strengthen pathways, and invest in both students and the systems that support them.



# Mission

---

The mission of the **STEM Education Plan** is to unite employers, educators, and communities across Oregon to **expand opportunity** and **empower students** from all backgrounds to thrive. By strengthening the systems that support learners and aligning resources and practices across the PK–20 continuum, closing opportunity gaps, and building inclusive STEM pathways, we invest in both students and the partnerships that prepare them to contribute meaningfully to their communities and to Oregon's sustainable future.



# What STEM Means in Oregon?

---

- STEM/STE(A)M is a mindset and approach to engaging with the world, not just an acronym
- Science and math are the **foundation** of STEM, not just pathways to it
- Interdisciplinary learning is most effective when built on strong individual subject knowledge
- The "**A**" (**Arts**) is intentionally included as a mode of communication, creative vehicle, and bridge between technical knowledge and human meaning

# What STEM Means in Oregon Con't

- Oregon students should be prepared to positively impact their communities and contribute to the workforce
- STEM education is **for everyone**, not just future STEM careers; mathematical, scientific, and technological thinking apply to nearly all career paths
- The ultimate goal is ensuring every Oregon student has the knowledge, durable skills, and confidence to pursue any path they choose

# Equity in STEM.....

---

- Equity in STEM means **actively creating conditions** for every student to succeed, not just removing barriers
- Student and community diversity is a **current strength and asset**, not just a goal to work toward
- STEM education is stronger when it reflects the **rich and diverse**, varied knowledge of Oregon's students, educators, and communities



Therefore we make.....

# Four Core Commitments

---

**Asset-Focused Learning** — Recognize the cultural knowledge, lived experiences, and strengths that students and educators bring; support culturally relevant, linguistically sustaining instructional materials

**Opportunity and Exposure** — Provide hands-on experiences and multiple entry points so students can explore and build a STEM identity without being forced into a single pathway early

**Student Engagement, Inspiration, and Empowerment** — Sparking curiosity, building confidence, and connecting learning to students' lives are meaningful outcomes in themselves, not just means to a test score

**Future-Ready Skills and Job Creation** — Students are future entrepreneurs and innovators, not just employees; develop problem-based learning alongside creativity, adaptability, collaboration, and leadership

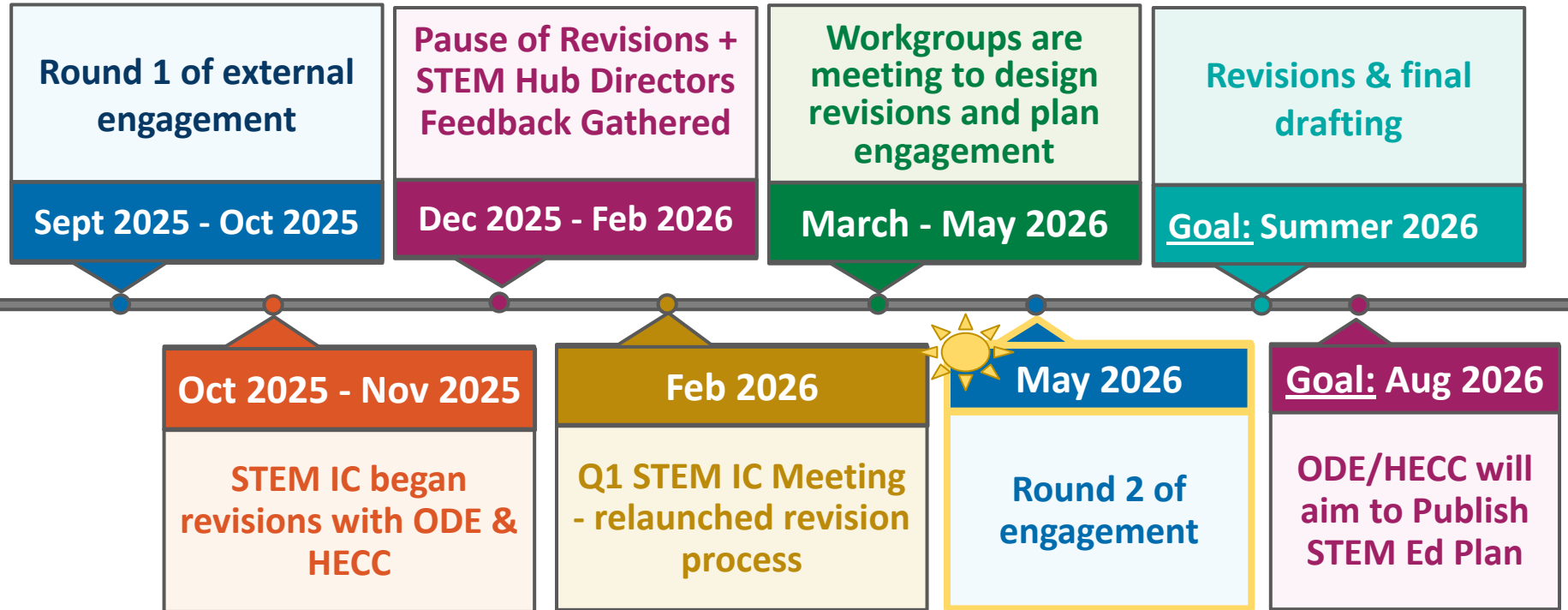
# 2026-2030 Draft Priority Outcomes

---

- Advance equitable outcomes and increase diversity in STEM
- Strengthen core math & science knowledge and skills for all learners
- Equip learners for the career of their choice
- Ensure future-ready digital literacy



# STEM Education Plan Revision Timeline



# Survey Link



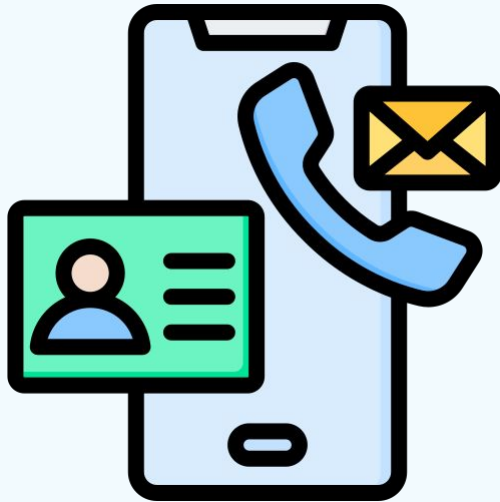
**Survey Link:** [Oregon's STEM Education Plan-5-year Revision Feedback Survey](#)

**Survey length:** Approximately 15-20 min

**Survey closes:** Wednesday, May 20th at 5PM

**Who we WANT to complete the survey:**  
Anyone who is interested in giving feedback on the **2026-30 STEM Education Plan** should participate.

# Contacts



**Deb Bailey**, *STEM Education Specialist*  
[deborah.bailey@ode.oregon.gov](mailto:deborah.bailey@ode.oregon.gov)

**Adrienne Pierce**, *Director, Well-rounded Integrated, and Digital Learning*  
[adrienne.pierce@ode.oregon.gov](mailto:adrienne.pierce@ode.oregon.gov)