



OREGON  
DEPARTMENT OF  
EDUCATION

*Oregon achieves . . . together!*

# High School Graduation and College & Career Readiness Act of 2016 (Measure 98)

**Career Technical Education (CTE) Guidance**  
Reynold Gardner

May 18, 2017

# Applying the Equity Lens

- The Equity Lens is established to clearly articulate the shared goals we have for our state
- Creating a culture of equity requires:
  - monitoring, encouragement, resources, data, and opportunity
  - an understanding of historical contexts and the active investment in changing social structures and practice over time to ensure that students from all communities have the opportunities and support to realize their full potential



OREGON  
DEPARTMENT OF  
EDUCATION

*Oregon achieves . . . together!*

# A Cohesive Model of Implementation

- The intent of the Act is to create a systemic model for improvement of graduation rates statewide
- The Act calls for:
  - Dropout prevention
  - Career Technical Education
  - College Credit Opportunities
- Focus on the students' Education Plan and Profile

# CTE provides students with:

- Personalized learning – Education Plan & Profile
- Academic and technical skills in hands-on context
- Workplace competencies
  - Business and industry knowledge
  - Training explicit to careers
- Focus on lifelong learning
- CTE student have higher graduation rates

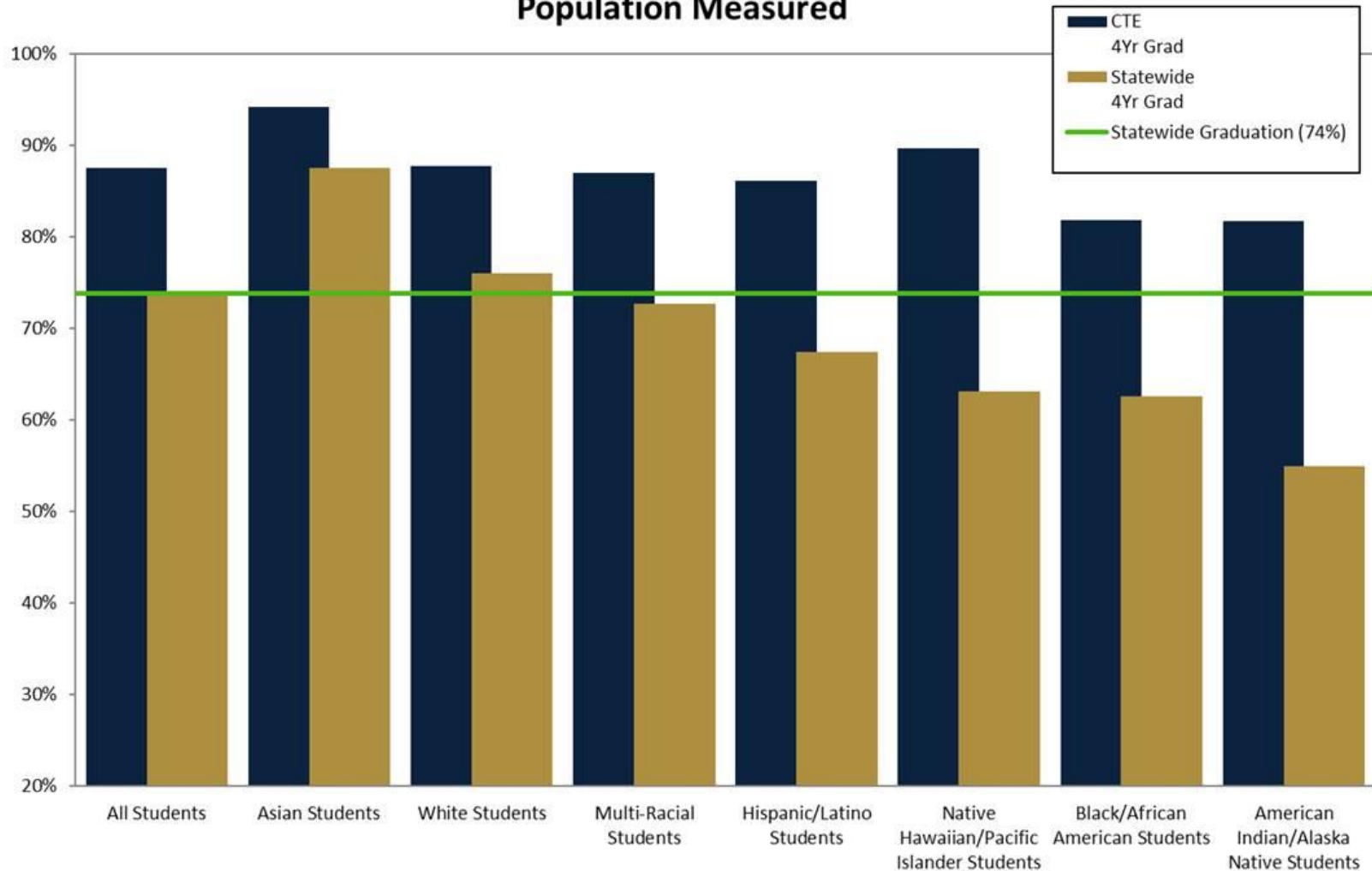


OREGON  
DEPARTMENT OF  
EDUCATION

*Oregon achieves . . . together!*

# CTE Graduation Rates

CTE Concentrators Graduated Above 74% in Every Racial/Ethnic Population Measured



# *What does establish and expand mean?*

Establish and expand current programs beyond the 2016-17 service level

## Yes

- Add a new start up
- Add courses to existing Program
- Add CTSO and/or stipend for teacher
- Add teacher to existing Program
- Remodel and/or retool existing Program

## No

- Backfilling budgets
- Using funds for the same program offered in 2015-2016
- Services to students prior to completion of the 8<sup>th</sup> grade



OREGON  
DEPARTMENT OF  
EDUCATION

*Oregon achieves . . . together!*

# *What is the difference between a Program of Study and an Elective?*

## Program of Study

- Sequence of courses
- CTE licensed teacher
- Encompasses full skill set
- Driven by industry need
- Approved by ODE
- Eligible for federal funds
- Performance goals

## Elective

- Single or series of courses
- Typically driven by teacher/student interest
- CTE license not required to be held by the teacher
- ODE approval not required



OREGON  
DEPARTMENT OF  
EDUCATION

*Oregon achieves . . . together!*



# *What are the first steps if I am interested in finding out more?*

1. Consider local workforce needs
2. Review the [pre-designed program models](#)
3. Schedule an appointment with your [Regional CTE Coordinator](#).

<http://www.oregon.gov/ode/learning-options/CTE/resources/Documents/2017-18%20Regional%20Coordinators.pdf>



OREGON  
DEPARTMENT OF  
EDUCATION

*Oregon achieves . . . together!*



# *In what areas are the pre-designed program models?*

- Agriculture, Food and Natural Resource Systems
  - Arts, Information and Communications
  - Business and Management
  - Health Sciences
  - Human Resources
  - Industrial and Engineering Systems
- <http://www.oregon.gov/ode/learning-options/CTE/resources/Documents/Guide%20to%20Pre-Designed%20CTE%20Programs%20of%20Study.pdf>

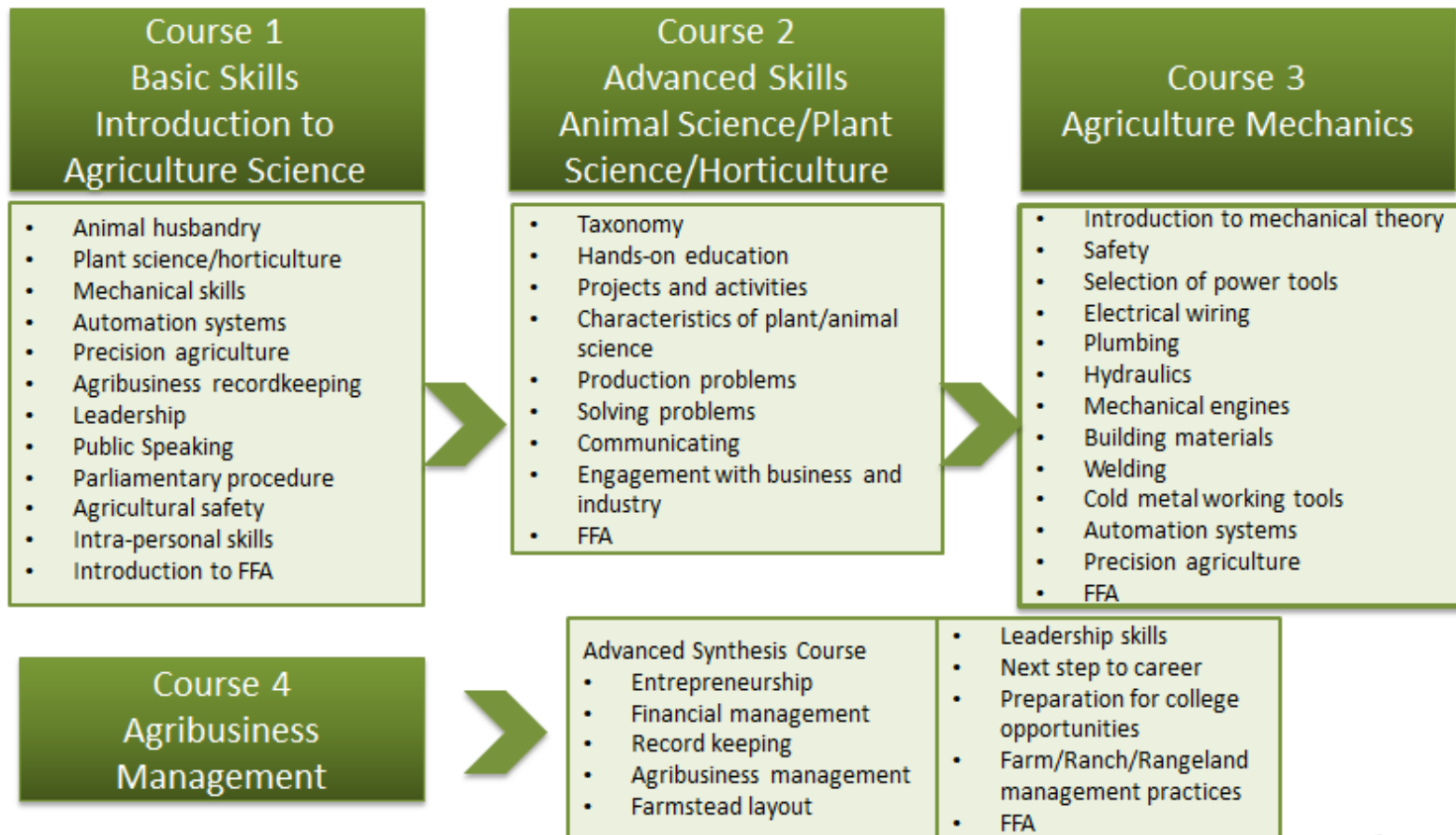


OREGON  
DEPARTMENT OF  
EDUCATION

*Oregon achieves . . . together!*

# Pre-designed Program of Study example....

## AGRICULTURE SCIENCE AND TECHNOLOGY START-UP PLAN



To learn more, or get started, please contact your Regional  
CTE Coordinator

# *Where can I find some model CTE Programs of Study?*

- Each is a unique reflection of the needs of the local business and industry partners
- Work with [Regional CTE Coordinator](#) to identify programs in your region
- Contact ODE Education Specialists to identify programs across the state



OREGON  
DEPARTMENT OF  
EDUCATION

*Oregon achieves . . . together!*

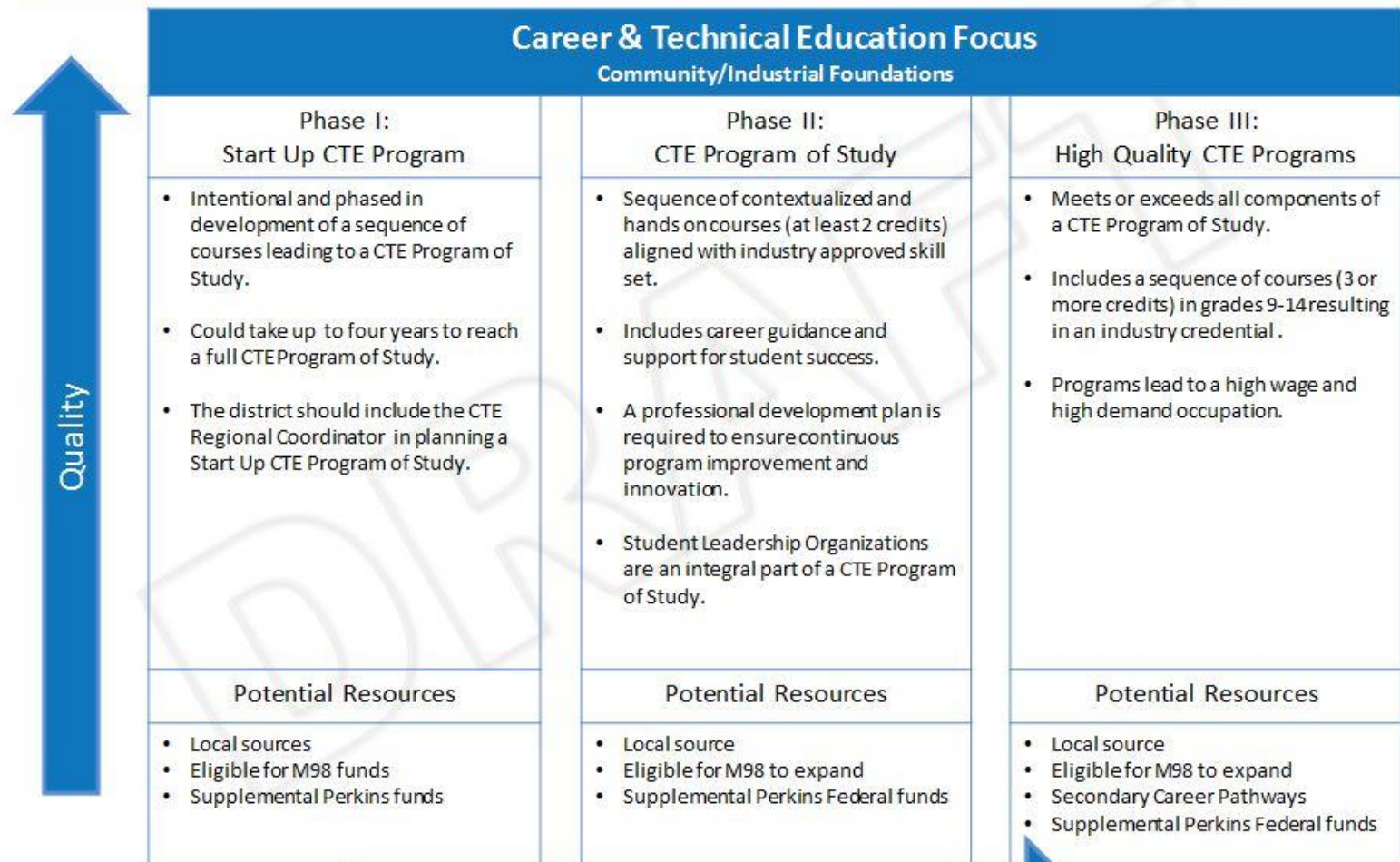
# Model CTE Program of Study

## Measure 98—Career Technical Education (CTE) Conceptual Model



**OREGON**  
**DEPARTMENT OF**  
**EDUCATION**

*Oregon achieves... together!*



Quality

Commitment and Funding

# What is a Regional CTE Coordinator?

- Experts in the implementation of CTE Programs of Study
- Located in one of 19 regions across the state
- The 'go to' person for any technical assistance in the growth and quality of CTE programs

<http://www.oregon.gov/ode/learning-options/CTE/resources/Documents/2017-18%20Regional%20Coordinators.pdf>

***\*\*The responsibility for implementation ultimately remains within the school and district.***



OREGON  
DEPARTMENT OF  
EDUCATION

*Oregon achieves . . . together!*



# *What will the Regional CTE Coordinator help with?*

- Teacher licensure
- Program of Study implementation
- Technical assistance
- Program approval
- Evaluation
- Data collection
- Professional Development
- [Regional Coordinator directory](#)



OREGON  
DEPARTMENT OF  
EDUCATION

*Oregon achieves . . . together!*

# *Teacher licensure can be difficult for CTE teachers. Help!?*

- TSPC and ODE are streamlining the licensure process (spring 2017)
  - Increase the capacity of the system to meet demand
  - Qualified teachers in the high school CTE Program
- Work with [Regional CTE Coordinator](#)
  - Selection
  - Business and industry experience review
  - Application process for prospective CTE teachers
- Many currently licensed teachers may have business and industry experiences which may facilitate the addition of CTE endorsements.
  - The development of new POS with existing district personnel



OREGON  
DEPARTMENT OF  
EDUCATION

*Oregon achieves . . . together!*



# *Can I use funds from 'the Act' for CTE elective courses?*

- Yes, if the course is considered as part of a dropout prevention strategy

- However...

A CTE elective does not qualify as a CTE activity



OREGON  
DEPARTMENT OF  
EDUCATION

*Oregon achieves . . . together!*

# *What is a CTSO?*

- Career Technical Student Organization
- Chartered by state: FFA, FBLA, FNRL, FCCLA, SkillsUSA, HOSA, DECA (future organizations)
- Co-curricular student organizations are evidenced based and integral to CTE instruction
- [Oregon CTSO Organizations](http://www.oregon.gov/ode/learning-options/CTE/resources/Pages/CTSOs.aspx)

<http://www.oregon.gov/ode/learning-options/CTE/resources/Pages/CTSOs.aspx>

# *What story will our CTE data help us tell?*

- Data is collected for every CTE Program for federal reporting
- School and program data on participation and completion
- Disaggregated program data allows schools to:
  - Evaluate program effectiveness
  - Target program improvement
  - Ensure equitable participation across all demographic areas



OREGON  
DEPARTMENT OF  
EDUCATION

*Oregon achieves . . . together!*

# *What are the data requirements for a CTE Program of Study?*

- Fall - Annual CTE Program Update reflects any changes in the previously approved Program of Study
  - NCES course codes updated
  - Teacher information
- June - CTE Student and Course Collection reflects end of year results
  - Courses offered
  - Student enrollment
  - Student grade
  - Technical skill assessment



OREGON  
DEPARTMENT OF  
EDUCATION

*Oregon achieves . . . together!*

# Guidance and Support Learning Modules

- Overview Video – May 4
- Request for Funds / Application – May 11
- Equity – May 15
- CTE – May 18
- Data – May 18
- College Credit Opportunities – May 18
- Fiscal – May 25
- Dropout prevention – May 25



OREGON  
DEPARTMENT OF  
EDUCATION

*Oregon achieves . . . together!*

# Thank you

Reynold Gardner

[reynold.gardner@state.or.us](mailto:reynold.gardner@state.or.us)



OREGON  
DEPARTMENT OF  
EDUCATION

*Oregon achieves . . . together!*