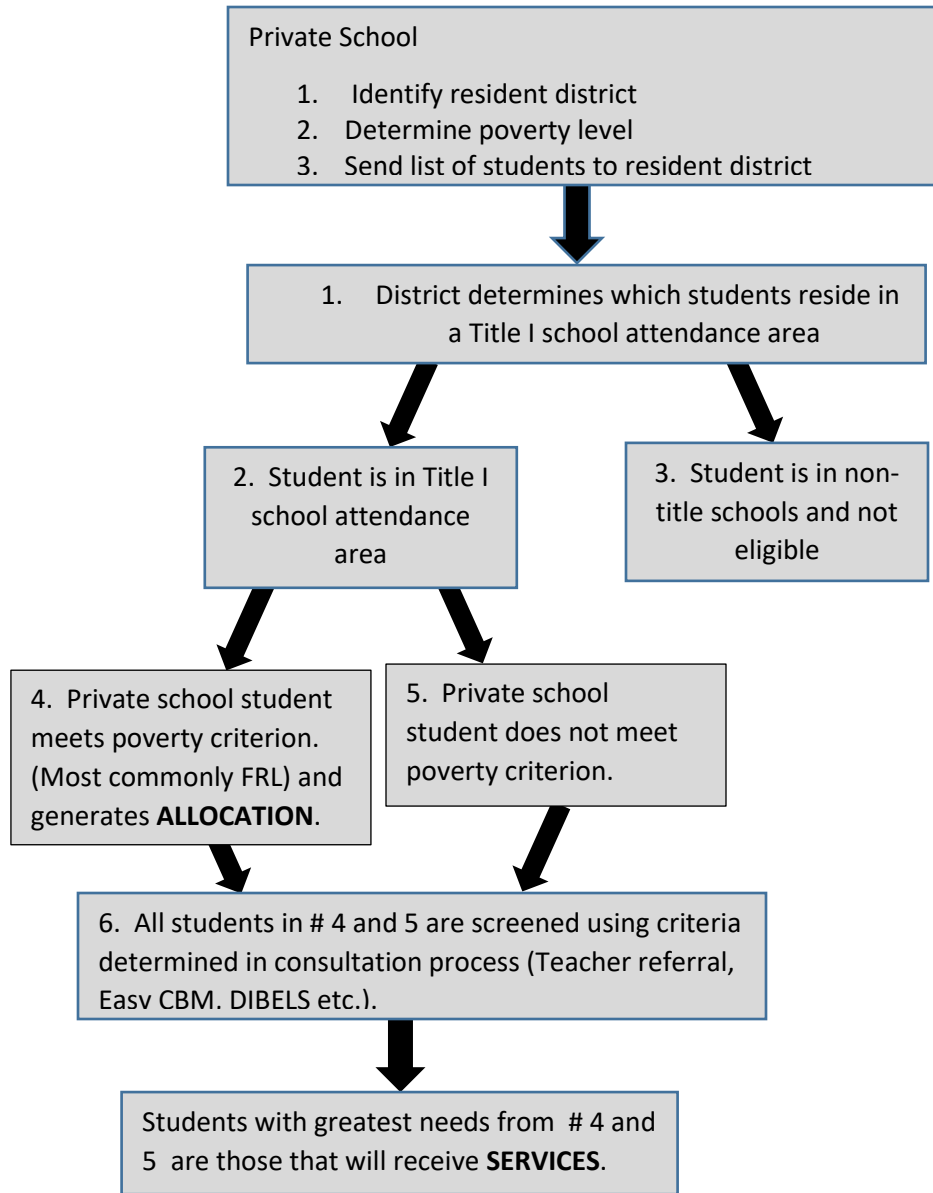




Title IA Flowchart

Title IA Equitable Services: Process for Determining ALLOCATION and SERVICE



- Private school determines (registration form) what the resident district for each student
- Private school determines poverty level of all students (most commonly-free and reduced lunch data)
- Private school sends districts a list of all students residing within district boundaries and their poverty level.
- District determines which student reside in a Title I school attendance area
- District sends private school list of ALL students in Title I school attendance area
- Private school screens ALL students from district list
- Private school ranks students with highest needs
- NOTE: **ALLOCATION** is determined by poverty AND residence
SERVICE is determined by need AND residence