



English Learner Advisory Group Meeting

October 17, 2024
9:00 AM – 12:00 PM

Meeting Agenda



- Develop a sense of belonging through extended introductions
- Review and provide feedback on the District Multilingual English Learner Plan template
- Review Final Multilingual Learner Strategic Plan and supporting resources
- Discuss important considerations for the implementation of the ML Strategic Plan
- Announcements

Grounding & Connecting



Share your name, pronouns, current role and....

“Why are you passionate about initiatives that support multilingual learners?”

How does the ODE English Learner Advisory Group influence state initiatives?

The EL Advisory Group will advise, consult, support, and make recommendations to ODE, and education partners on policies and practices related to the English Language Learners.

~ [ODE English Learner Advisory Group webpage](#)

When and how was the ODE English Learner Advisory Group established?

House Bill 3499 (2015)

- ‘Multilingual’ Learner Strategic Plan
- English Learner Advisory Group
- English Learner Outcomes Program
- English Learner Report to the legislature

~ [House Bill 3499 EL Outcomes Program website](#)



Multilingual English Learner District Plans



- District Multilingual English Learner Plans are required by state and federal law and must meet guidelines set by the U.S. Department of Education's Office for Civil Rights
- The key components of district plans include the process by which students are identified and designated for English Learner services as well as a description of those services and supports.

We need your feedback!

Review [draft of EL District Plan template](#)

What suggestions do you have as to how ODE staff could provide district support? [Note catcher](#)

ZOOM Group 1 = Sections 1 & 5

ZOOM Group 2 = Sections 2 & 4

ZOOM Group 3 = Sections 6 & 7

ZOOM Group 4 = Sections 3 & 8

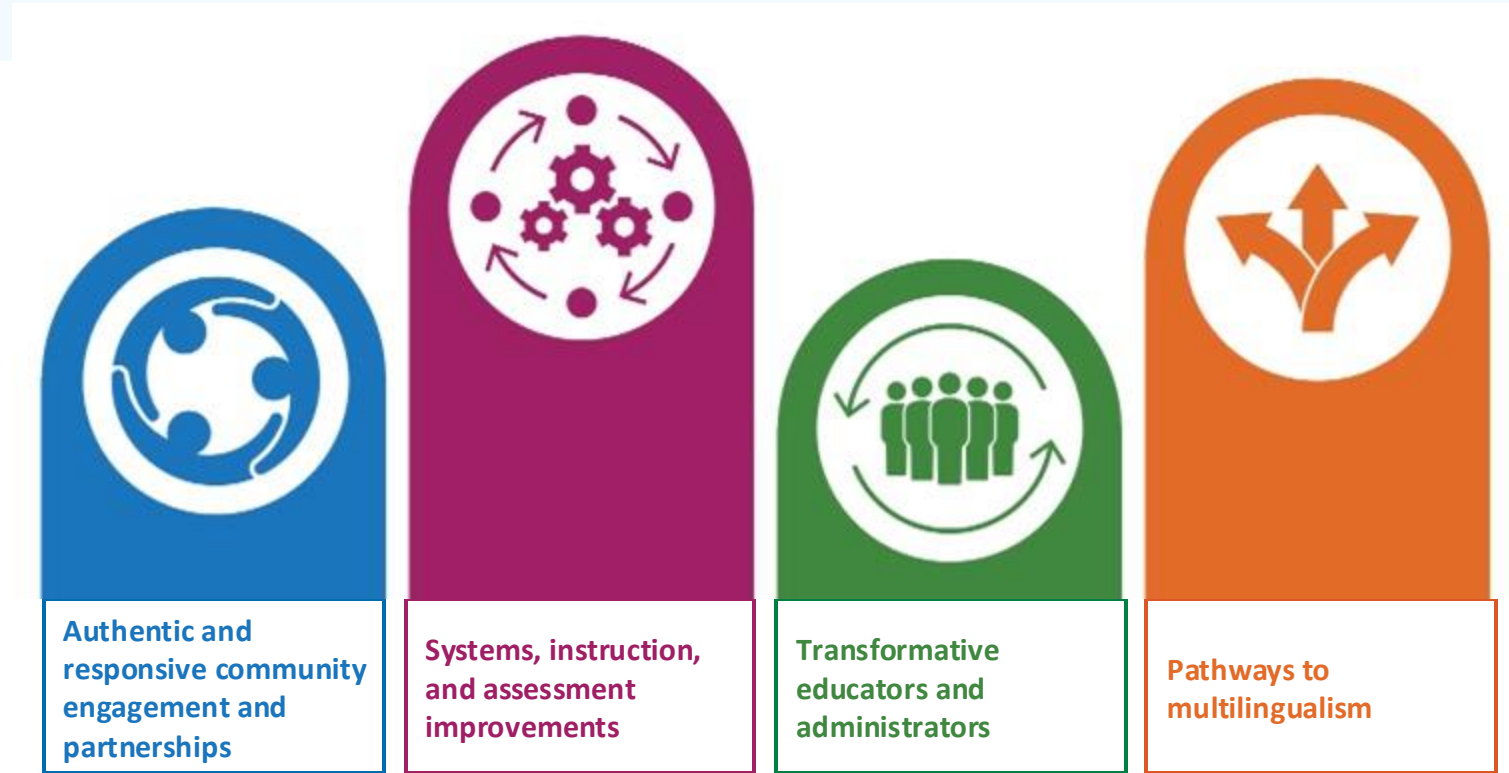
What key ideas came up for you?



In what format should we collect district plans?

- Smartsheet...?
- Word...?
- Forms...?

Oregon Multilingual Learner Strategic Plan



ML Strategic Plan Resource Folder

- [Comprehensive Oregon Multilingual Learner Strategic Plan](#)
- [ML Strategic Plan Feedback Spreadsheet](#)
 - Priority Area 1 - Goal 1 Notes:
 - What considerations should we make in relation to this action?
 - What supports will be needed?
 - What are the most immediate next steps?

Breakout Rm. 1 = Action 1.1

Breakout Rm. 2 = Action 1.2

Breakout Rm. 3 = Action 1.3

What key ideas came up for you?



Announcements





Task Force Needed for ODE's Immigrant & Refugee Student Success Plan

Office of Equity, Diversity and Inclusion

Immigrant & Refugee Student Success Plan Task Force Engagement Strategy

As part of implementing **SB 1532**, ODE seeks to hear from K-12 partners that serve Immigrant and Refugee youth and families to inform the strategies that will be included in the plan. We're looking for members to help improve K-12 education in Oregon by sharing what works and what doesn't for immigrant and refugee students. **What's Involved:**

- Attend **3 virtual meetings** between October and December 2024
- Share your thoughts through surveys or small group discussions
- Help us gather insights on current services and practices that support immigrant and refugee students
- Total time commitment: **no more than 10 hours** over the 3 months

Student Success Plan Pillars

High level overview of structures, purpose and outcomes



**Culture,
Identity, and
Language
Development**



**Academic
Success**



**Service
Learning**



**Family
Engagement**



**Coordinated
Systems of Care**



**Leadership
Development**

Immigrant & Refugee Student Success Plan

What is it?

Short- and Long-term Impact:

- Grants in Aid (GIA) funding to support immigrant/refugee programming.
- Supports identification of best practices for scaling across educational systems.

Impact on School Districts/ESDs:

- Early Learning Hubs, districts, ESDs, or a consortium of these entities can apply for funding.
- Promotes improved services for immigrant/refugee students statewide.

Impact on Educational Institutions/Stakeholders:

- Opportunity for post-secondary institutions, Tribal governments, and Community-Based Organizations to apply for funding.
- Fosters equitable resource allocation and opportunities for marginalized communities.

Equity Impact

- The IR SSP aims to support Immigrant Refugee students and families through community engagement.
- This grant program will identify best practices to improve educational systems by enabling local communities to implement strategies that enhance achievements, opportunities, and a sense of belonging for Immigrant Refugee students and their families.





Interested? Please contact Heidi Lee Harless at ODE

Office of Equity, Diversity and Inclusion
heidi.harless@ode.oregon.gov



Multilingual Learner Statewide Collaborative

The Oregon ML Collaborative is a collaborative of professional educators, administrators, higher education and education partners who have a vested interest in elevating outcomes for multilingual learners through high-quality instructional programs and practices.

Participants will learn from one another, with one another and share resources that advance the success of multilingual learners.

[Flyer](#)

[Registration](#)

Suggestions for topics [[Form](#)]

Meetings are the first Tuesday of each month, from 2:30-4:00 pm (PST)

November 2024 - June 2025

2024-25 Meetings



Dates	Time	Work Session Topics
October 17	9:00-12:00	EL District Plans ML Strategic Plan - Priority 1
January 9	9:00-12:00	TBD ML Strategic Plan - Priority 2
April 10	9:00-12:00	TBD ML Strategic Plan - Priority 3
June 5	9:00-12:00	TBD ML Strategic Plan - Priority 4

Closure: One word, how was our time together today for you?

Multilingual & Migrant Education Team received permanent funding!

