

Northern Sea Otter - Elakha

Structure & Function

Instructions

Step 1: Watch the video "Sea Otter Anatomy" from Ocean Today.

Step 2: As you listen to the video, label the following structures of the sea otter anatomy on your "Sea Otter Diagram":

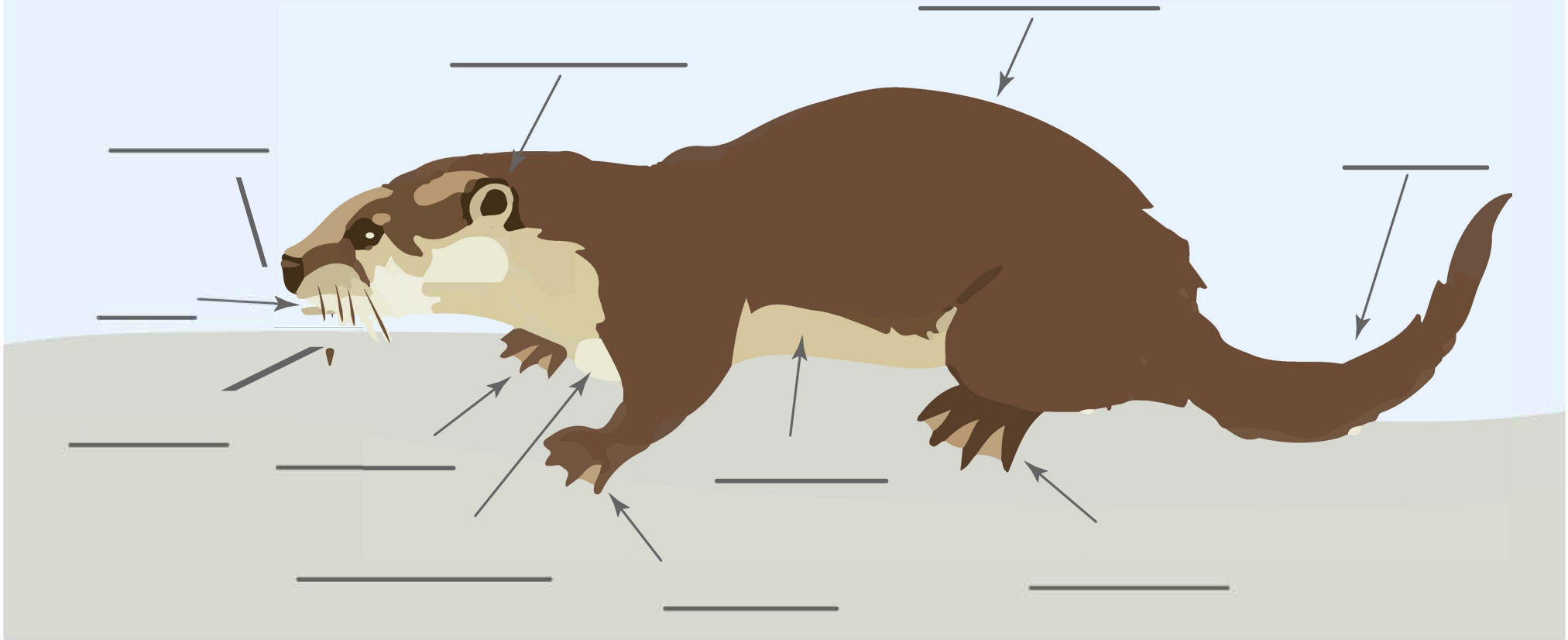
- Sensitive whiskers
- Closeable nostrils
- Closeable ears
- Retractable claws
- Forepaws
- Two layers of dense fur
- Long tail
- Large webbed hind feet
- Baggy storage pockets
- Teeth
- Large lungs

Step 3: Work with a partner to describe the function of each structure of the sea otter anatomy:

Structur	Function (How does the sea otter use this part of their anatomy?)
1. Sensitive whiskers	
2. Closeable nostrils	
3. Closeable ears	
4. Retractable claws	
5. Forepaws	
6. Layers of dense fur	
7. Long tail	
8. Large webbed hind feet	
9. Baggy storage pockets	
10. Teetch	

Sea Otter - Elakha

Enhydra lutris



Sea Otter

Enhydra lutris

