



GRADE 7

Many Peoples, Many Baskets



Introduction to Siletz Basketry



Warp

The **warp** element of a basket provides its shape and structure and is typically vertical (or up and down)—just like a skeleton! The arrows here are pointing to the warp of the basket.

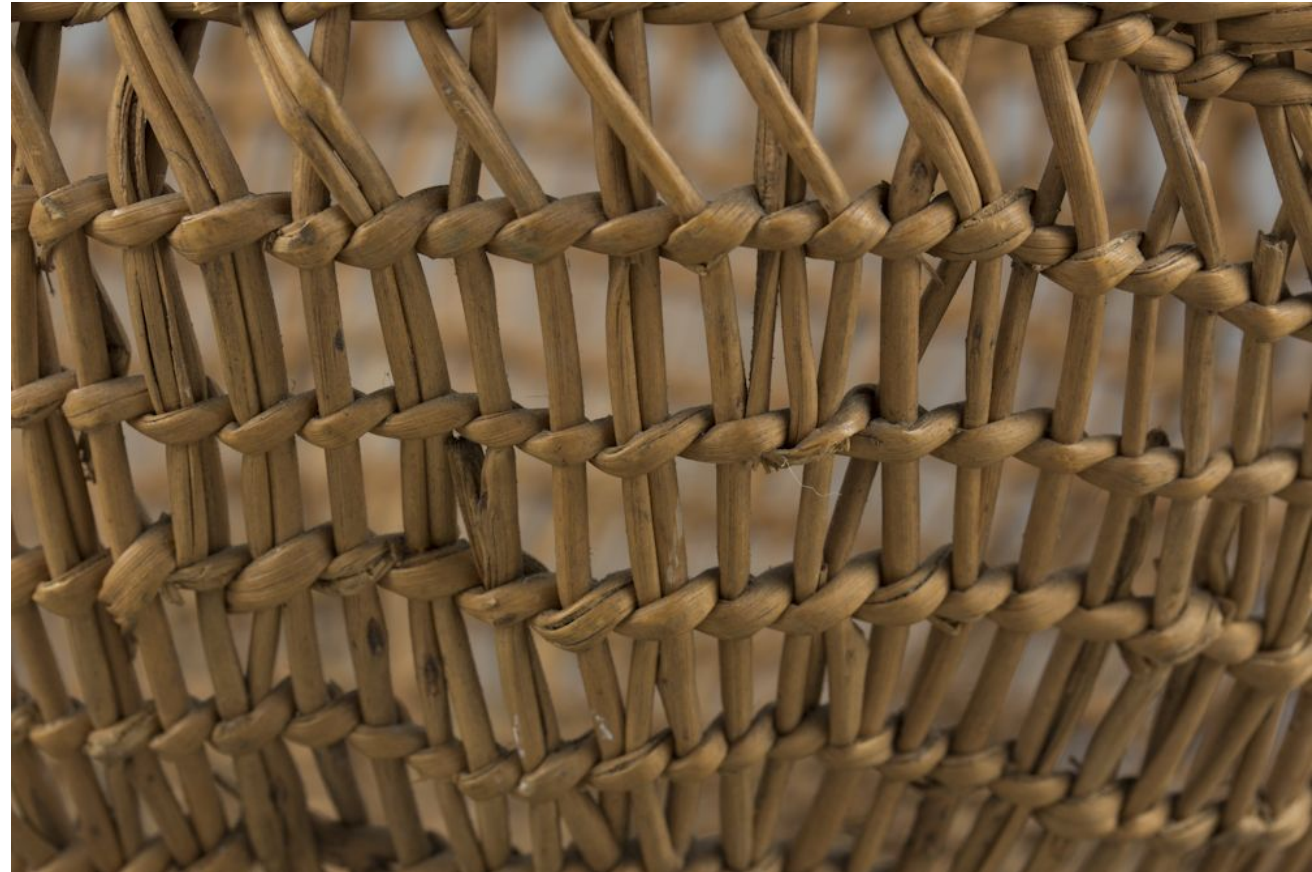


Image source: CTSI

Weft

The **weft** is the part of the basket that is woven through the warp.

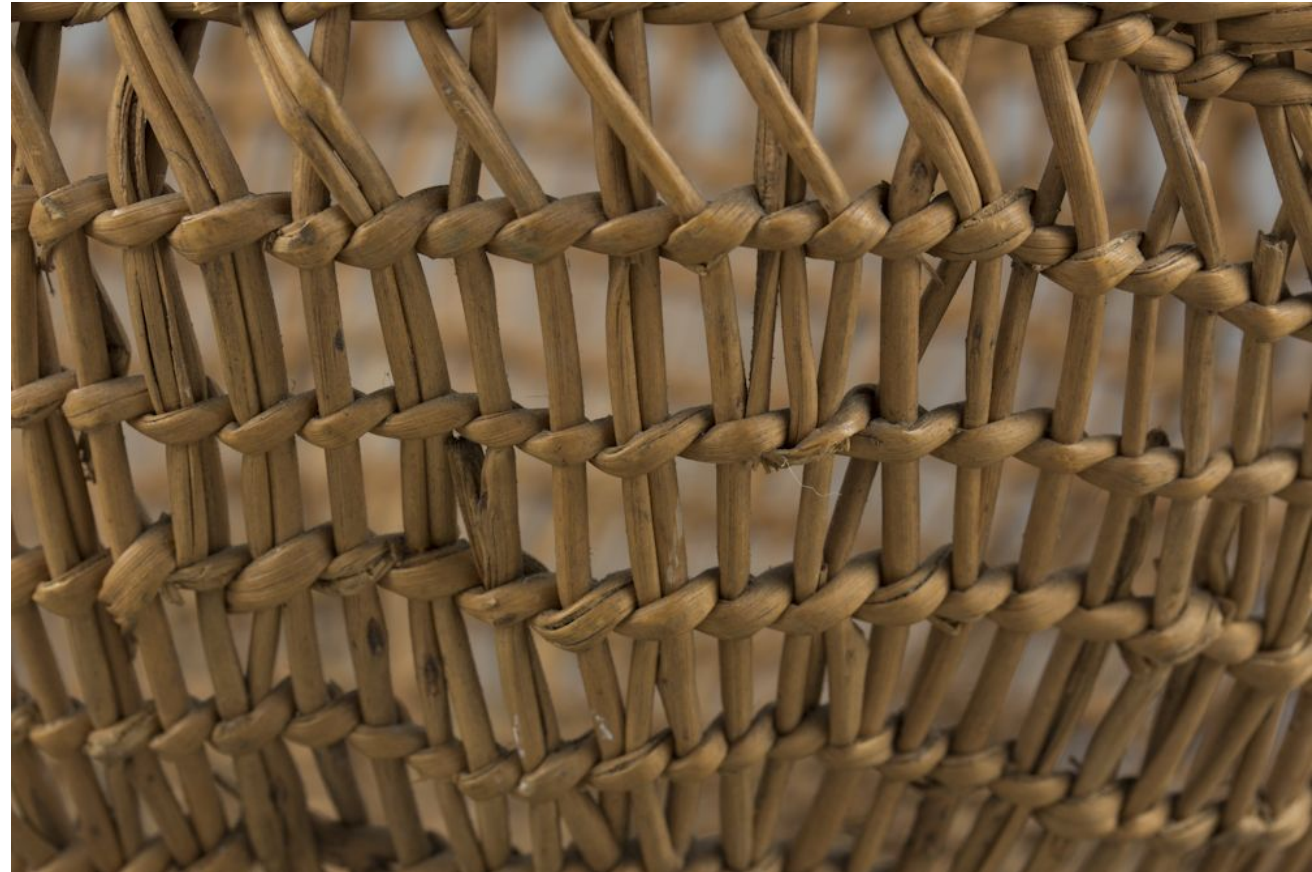


Image source: CTSI

Overlay

The third main feature of Siletz basketry is the **overlay**. The overlay materials are used to create an additional design element, like a pattern. Look at the overlay on this basket. It has a mark (or pattern) called a friendship design.

Image source: CTSI



Regalia

The traditional or ceremonial clothing, accessories, and artifacts worn at sacred events.

Image source: CTSI

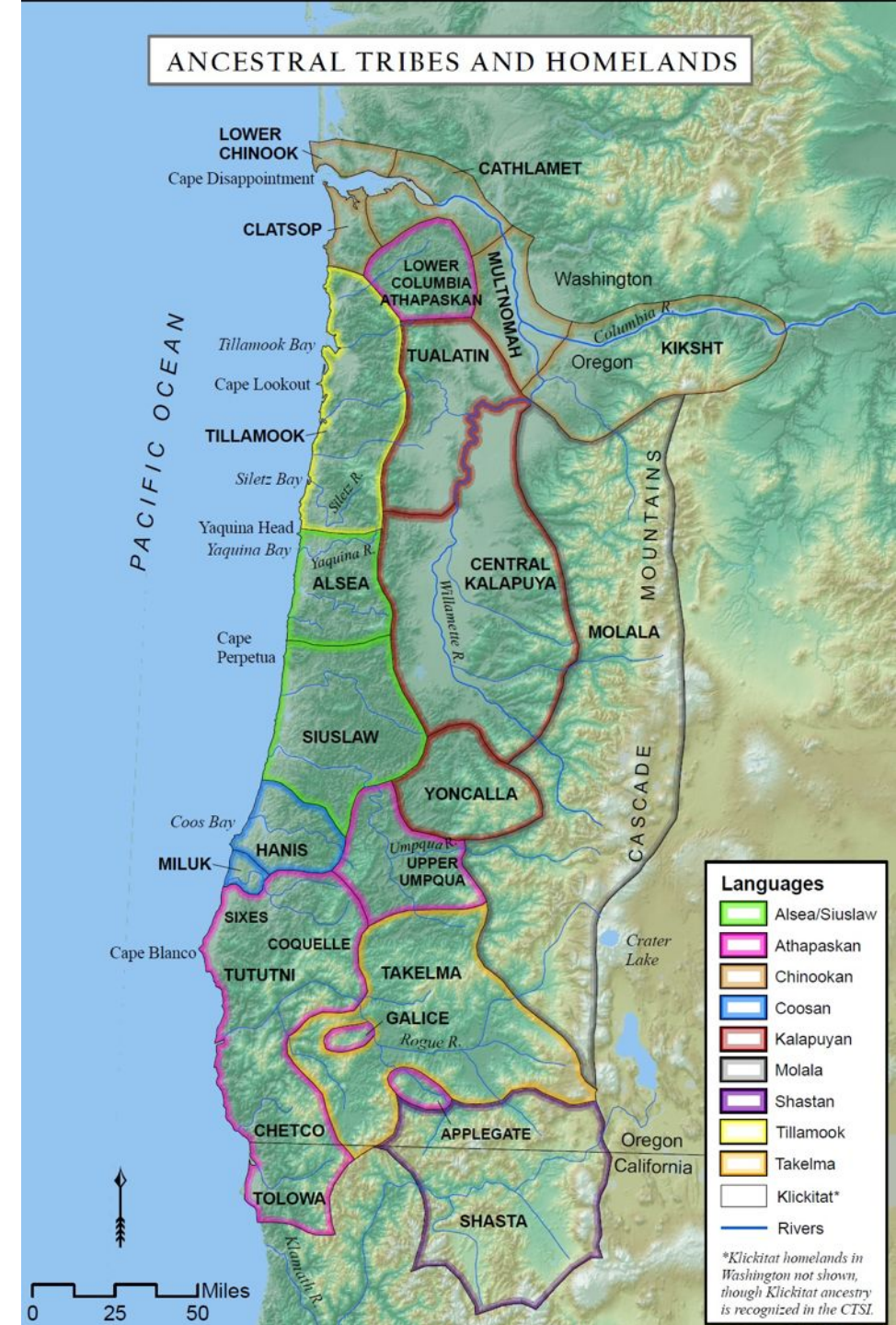


Confederated Tribe

A single Tribal government that is composed of multiple Tribes and bands. The Siletz are a Tribe confederated from many different people groups who lived in what is now western Oregon, northern California, and southwestern Washington.

A map of the ancestral Tribes and homelands of the Confederated Tribes of Siletz Indians (CTSI) can be seen on the right.

Image source: CTSI website



Diverse Baskets of the Siletz Peoples

Image source: CTSI



Basket Hat



Ada Collins (left) with her daughter Daisy Collins Fuller

Images source: Collins Family Collection, CTSI Cultural Collections

Baby Baskets



Images source: CTSI

Cooking Basket



Bear grass

Purse Basket #1



Images source: CTSI and iStock

Purse Basket #2



Image source: CTSI

Pack Basket



Image source: CTSI



Clam Basket



Image source: CTSI

Table Discussion Questions

- What similarities do you see among these baskets? What similarities do you see among the Tribes that made these baskets?
- What differences do you see among these baskets? What differences do you see among the Tribes that made these baskets?
- What is needed to make a basket like the ones we studied? (Steps, knowledge, supplies, etc.)
- How does geography/location affect the design of these baskets?

Original Ancestral Tribes and Homelands

Image source: CTSI



Relocation to the Original Siletz Reservation



Image source: CTSI

Current Siletz Tribal Land Ownership

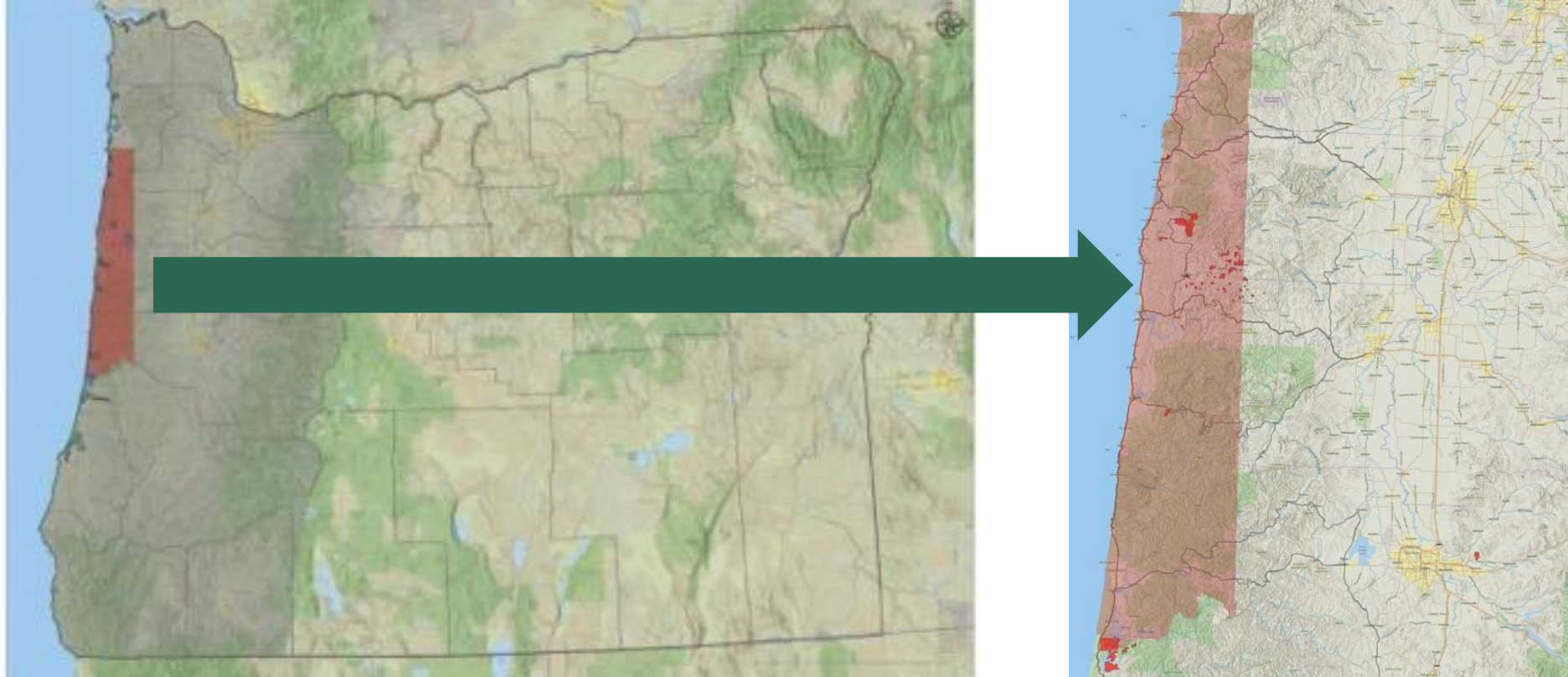
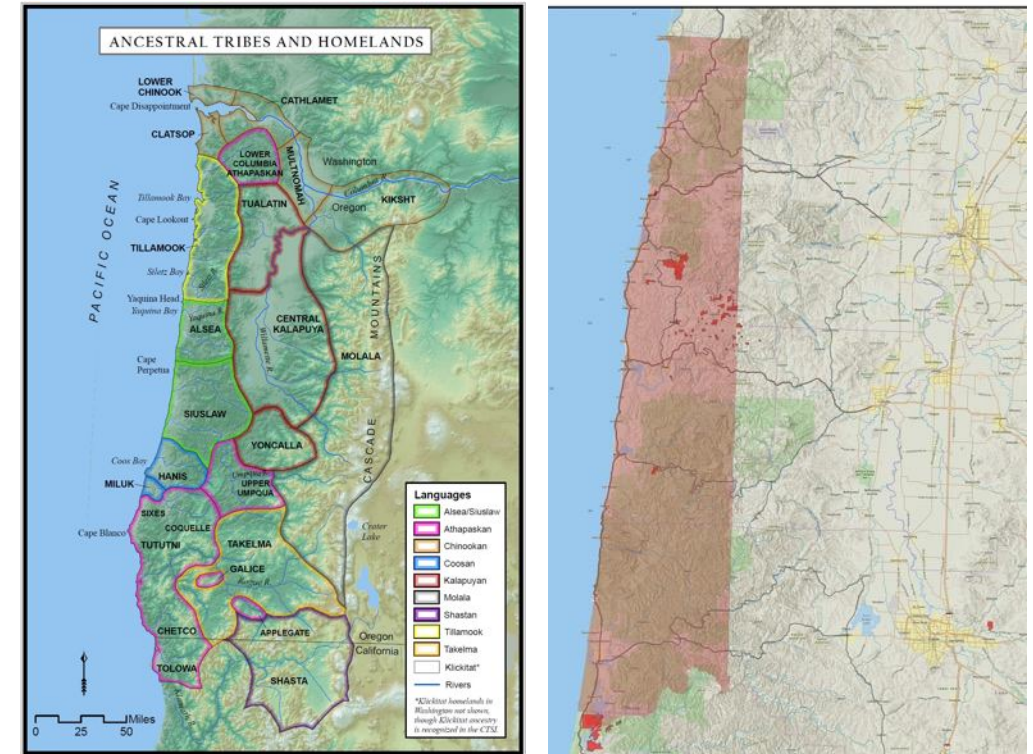


Image source: CTSI

Siletz Removal Reflection Questions

- How do you think forced relocation affected the language of these Native peoples?
- How do you think forced relocation affected the economies of these Native peoples?
- How do you think forced relocation affected lifeways, like basketry, of these Native peoples?
- How do you think the Tribal groups that were forced to relocate could continue their traditions despite relocation?

Image source: CFSI



Siletz Basketry: A Living Tradition

Choose two stop and jot questions from the options below. Answer the questions on a piece of blank paper as you read. **You will have 15 minutes to complete this activity.**

- **Prereading question:** Write a question you have about the living tradition of Siletz basketry. Answer your question after you read.
- **Make a connection:** As you read, if a section reminds you of something else, write it down. You can make a connection to yourself, to something else that we have studied, or to our previous activity on Siletz basketry.
- **Significant passage:** What is a passage in this reading that taught you something important about the Siletz tradition of basketry? Why is this important?



Reflection and Drawing Connections

