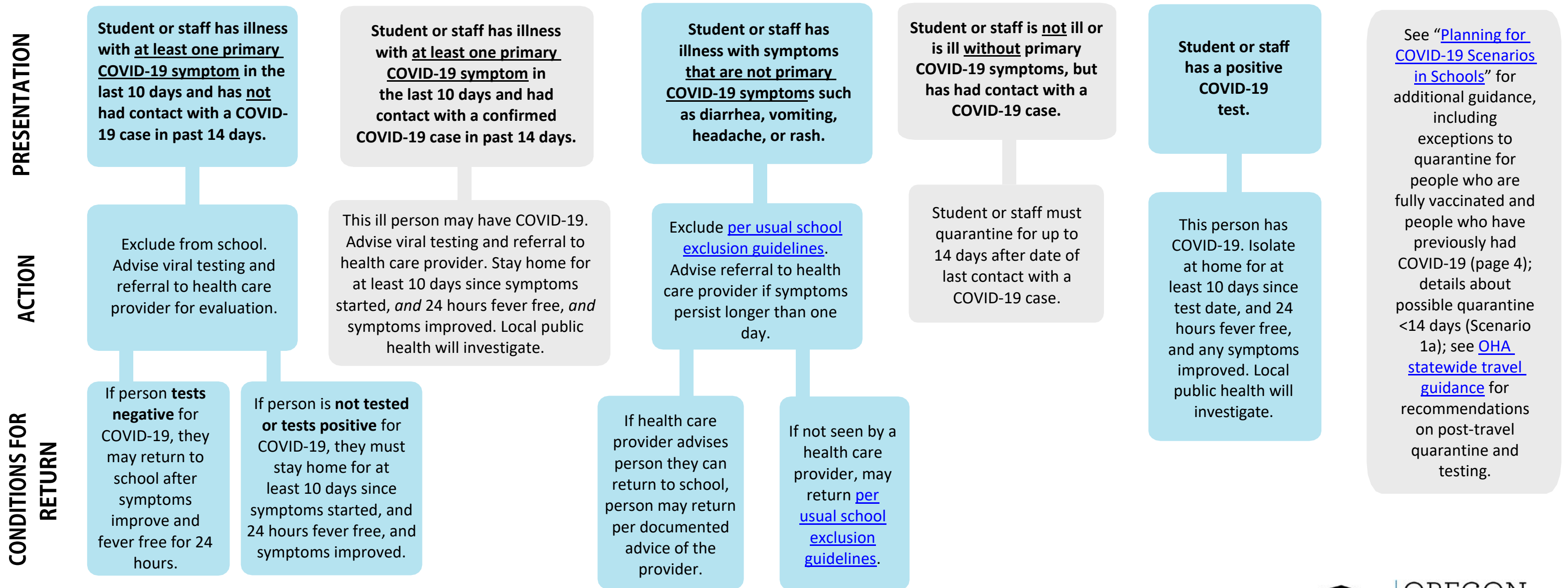


# COVID-19 Exclusion Summary Guidance for K-12

Version 4/2/2021



See "[Planning for COVID-19 Scenarios in Schools](#)" for additional guidance, including exceptions to quarantine for people who are fully vaccinated and people who have previously had COVID-19 (page 4); details about possible quarantine <14 days (Scenario 1a); see [OHA statewide travel guidance](#) for recommendations on post-travel quarantine and testing.



## Important Definitions

- Primary COVID-19 symptoms** include the following:
- Fever of 100.4°F or higher
  - Chills
  - Cough
  - Shortness of breath
  - Difficulty breathing
  - New loss of taste or loss of smell

**Fever free** means a temperature less than 100.4°F without the use of fever-reducing medication.

**Quarantine** separates and restricts the movement of people who were exposed to a contagious disease to see if they become sick.

**Isolation** separates a sick person with a contagious disease from people who are not sick.

**Confirmed case** means a person who has a positive result on a COVID-19 diagnostic test.

**Presumptive case** means a person who has not had a positive result on a COVID-19 diagnostic test but has symptoms after contact with a confirmed COVID-19 case.