

INSTRUCTIONAL TIME

2020-21 SCHOOL YEAR

TEACHER-FACILITATED \geq 50% + APPLIED LEARNING \leq 50% + OTHER

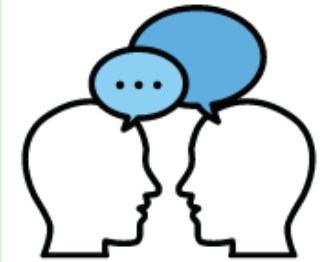


Synchronous/Asynchronous learning experience planned and guided by a licensed teacher.

Synchronous opportunities, either on-site or off-site, must be provided daily and may include full group instruction, peer interaction, two-way communication, small group breakouts, or individual office hours.



Learning experiences that allow for students to apply knowledge and skills that extend from the teacher-facilitated learning. Students have access to instructional support during applied learning activities, provided by educational assistants, teachers, and/or related service providers.



- Teacher Professional Development
- Parent/Family Contacts (guidance, support, communication, and parent/teacher conferences)