

Memo

To: Mike Shaw, Acting Eastern Oregon Area Director

From: Dennis Lee, Klamath-Lake District Forester

CC: Liz Dent, Division Chief, State Forests Division
Brian Pew, Deputy Chief, State Forests Division
Ron Zilli, Operations Coordinator, State Forests Program

Date: June 6, 2019

Re: Information Item – Annual Operations Plan for 2020

The 2020 State Forests Annual Operations Plan for the Klamath-Lake District is attached for your approval. This plan is consistent with the Eastern Region Long-Range Forest Management Plan, and the 2020 Annual Operations Planning Standards and Guidance memorandum.

On the Sun Pass Tract there are 2 BoF sale totaling 1,021 acres, harvesting 6.2 mmbf and generating \$1,319,400.

On the Gilchrist Tract there are 3 sales totaling 2,815 acres, harvesting 2 mmbf, (2,000 tons), generating \$22,510 in revenue.

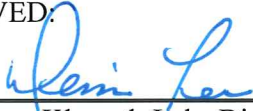
This annual operations plan covers proposed forest management activities for fiscal year 2020. This plan was reviewed by technical specialists from within the department and biologists from the Oregon Department of Fish and Wildlife and USFWS. Their comments were received verbally and in writing (written comments are on file at the district office. The draft annual operations plan also underwent a 45-day public comment period. No district specific public comments were received.

Approval of this plan does not constitute final approval of individual project details. Individual timber sales are subject to additional review processes at the district and division staff level before approval for auction. The type of auction, stumpage or delivered log, will be decided during timber sale preparation and will be based on the timber sale cruise, market conditions and other factors affecting the outcome of the operation. The operations described in this plan may be modified during the final preparation and/or implementation. Modifications to these operations will conform to the process included in the draft Annual Operations Planning Directive.

The official copy of this Annual Operations Plan will be on file at the district office. Additional copies are available at the State Forests Program office in Salem, and is also available on the ODF web site.

Memo

APPROVED:

A handwritten signature in blue ink, appearing to read "Dennis Lee", written over a horizontal line.

Dennis Lee, Klamath-Lake District Forester

6/24/19

Date

**KLAMATH-LAKE
DISTRICT
2020 ANNUAL
OPERATIONS PLAN**

KLAMATH-LAKE DISTRICT

DRAFT 2020 ANNUAL OPERATIONS PLAN

OVERVIEW

This overview describes the planned activities that Oregonians can expect to see on Oregon Department of Forestry (ODF) managed lands located in Klamath County, Oregon. ODF manages approximately 105,600 acres of forest within Klamath County including two state forests. The Sun Pass State Forest (21,500 acres) located adjacent to Crater Lake National Park and the Gilchrist State Forest (71,900 acres) located near the towns of Crescent and Gilchrist. ODF also manages a number of smaller parcels within the county ranging in size from 40 to approximately 4,000 acres. These lands are managed under the Eastern Region Long-Range Forest Management Plan to provide a mixture of economic, environmental, and social benefits to the citizens of Oregon.

The Klamath-Lake Annual Operations Plan (AOP) is divided into five major categories: Integrated Forest Management, Planning Activities, Information Systems, Public Information and Education, Administration, and Appendices. Specific details for items in each of these categories are described using a combination of tables and written narratives. The intent of this overview is to briefly summarize some of the items identified in the five categories so that the reader can more efficiently review the proposed activities in the 2020 AOP.

Over the next two months, ODF will request review and comments on our plan from others, including Klamath County Commissioners, the Forest Trust Land Advisory Committee (representing the counties that deeded land to ODF), Oregon Department of Fish and Wildlife, the US Fish and Wildlife Service, Tribal Governments, recreationalists, and wildlife advocates, as well as Oregonians in general.

During this time, we want to hear your feedback and suggested revisions. In addition, any *thank you* messages to staff and volunteers are welcomed and appreciated. Thanks in advance for your review and engagement.

A short summary of activities planned for the coming year:

- Proposing to Harvest 6.2 MMbf on 1,021 acres with an estimated net revenue of \$1,276,600.
- Proposing to Harvest 2 MMbf of pulp from 2815 acres estimated to produce a net revenue of \$22,510.
- Improving 8 miles of existing road.
- Planting 38,000 seedlings on 87 acres.
- Continue working with Trout's Unlimited and Crater Lake National Park to restore Bull Trout to the lower reaches of Sun Creek.
- Continue woodpecker surveys in Sun Pass State Forest.

Table of Contents

OVERVIEW	2
INTRODUCTION	5
INTEGRATED FOREST MANAGEMENT	5
Timber Harvest Operations	5
Overview of Timber Harvest Operations.....	5
Structural Habitat Components.....	6
Summary of Timber Harvest Operations by Area	7
Forest Roads Management.....	8
Overview	8
Road Improvement	8
Road Access Management	9
Road Maintenance	9
Management of Rock Source/Supply	9
Land Surveying.....	9
Young Stand Management.....	9
Site Preparation.....	9
Seedlings / Nurseries	9
Planting	9
Vegetation Management.....	10
Tree Protection.....	10
Pre-commercial Thinning.....	10
Pruning.....	10
Invasive Species.....	10
Roadside Spraying.....	11
Stocking Surveys	11
Recreation Management	11

Overview of Recreation Management	11
Facilities (Campgrounds, View Points, Trail Heads, etc.)	11
Trails	11
Other Integrated Forest Management Projects	12
Aquatic Habitat Improvement	12
Land Exchange	12
Firewood Cutting Program.....	12
Non-Timber Forest Products.....	13
Planning	13
Stand Level Inventory and Other Vegetation Inventories	13
Fish and Wildlife Surveys	13
Research and Monitoring	14
Other Planning Operations	14
Public Information and Education	14
Administration	14
District Organization	15
APPENDIXES.....	16

KLAMATH-LAKE DISTRICT

DRAFT 2020 ANNUAL OPERATIONS PLAN

INTRODUCTION

This document describes activities planned on the Eastern Region State Forest lands during Fiscal Year 2020. (July 1, 2019 to June 30, 2020). All the eastern region state forest lands are located on the Klamath-Lake District in Klamath County. With the establishment of Gilchrist State Forest, the district manages approximately 105,600 acres of forest land, 98,753 acres of Board of Forestry lands and 6,827 acres of Common School Forest lands. Management of these lands is guided by the Eastern Region Long- Range Forest Management Plan (LRFMP), which was approved in October, 1995.

This Annual Operations Plan (AOP) describes how the Long-Range Plan will be implemented during the 2020 fiscal year. The AOP includes this summary document with sections on commercial forest management operations, roads and engineering, cultural resources surveys, wildlife surveys, etc. It also includes summary tables. Pre-operations reports that describe the individual timber sales being proposed are available upon request. The final plan will contain a public involvement summary that describes the results of the public involvement activities related to this AOP.

Keep in mind as you read the AOP summary, the document describes management activities for contracts which will be prepared during the fiscal year (commercial forest management operations and roads) as well as activities that will occur on the ground during the fiscal year (site prep, tree planting, pre-commercial thinning, fuels reduction).

INTEGRATED FOREST MANAGEMENT

Timber Harvest Operations

Overview of Timber Harvest Operations

The planned timber sales are 15 acres below the decade three average annual harvest rate (1036 acres) in the LRFMP. Annual harvests will vary but future timber sales will be planned to achieve the total decade three harvest of 10,360 acres.

The FY20 harvests are estimated to generate 6.2 MMbf of saw timber valued at \$1,276,600. In addition to saw timber these sales may produce wood suitable for the production of pulp or fuel wood (biomass and fire wood). The amount and value of these additional products is difficult to predict during the planning process due to stand variability and market conditions.

In addition to timber harvests there are pulp sales planned on 2,815 acres on the Gilchrist State Forest. This will be 185 acres below the district annual target of 3,000 acres. The intent of these sales is to primarily reduce young overstocked stands on the forest but the sales are still expected to produce 22,510 tons of pulp valued at \$22,510.

Refer to Appendix A, table 1, TIMBER HARVEST OPERATIONS - FINACIAL SUMMARY for the anticipated harvest acres, volumes and revenue for each proposed sale in the AOP. A map with the locations of each sale and detailed maps of the sale areas can be found in Appendix C.

Table 1. Annual Operations Plan objectives compared to Annual Harvest Objectives identified in the Eastern Region Long-Range Forest Management Plan. All values are acres, except for Volume.

Annual Harvest Objectives	FMP Annual Objective	2020 AOP
Volume (MMBF)	6.4	6.2
Partial Cut Harvest (acres)	1,036	1,021
Regeneration Harvest (acres)	0	0
Pulp Harvest (acres)	3,000	2,815

TEXT

Table 2. Accomplishment of AOP Harvest Volume Compared to IP Annual Objective (MMBF)

Fiscal Year	FMP Annual Objective	AOP Planned Acres	AOP Sold Acres	Cumulative Difference from Objective¹
2012	1197	1235	1231	-183
2013	1197	1229	1242	-138
2014	1197	1172	1122	-213
2015	1036	1046	1170	-79
2016	1036	1471	1365	250
2017	1036	1037	1075	289
2018	1036	1043	1063	316
2019 (Current AOP) ²	1036	1115	1095	375
2020 Draft	1036	1021	N/A	360

1. FMP Harvest Objective versus Sold Area.

Structural Habitat Components

Desired Future Condition for Large Trees in Sun Pass State Forest:

Stands will be managed to achieve a target of 10 trees per acre 20" DBH and larger, at least two of which are 30" DBH or larger. This is a long-term goal that could take several decades to achieve. Stand management prescriptions in the area described will be designed to guide stands towards the future target, and to create stands of vigorous, fast-growing trees. This type of stand has the best chance of providing the large tree component in the future. Existing large trees (up to the 10

tree standard) are a priority to leave as long as doing so contributes to the long-term forest health goal. Existing large trees that exhibit decadence that is of value to wildlife will also be left at least to the level prescribed in the FMP (0.2 per acre).

Monitoring:

Summer/Fall of 2016 stand level inventory was conducted within Sun Pass. These measurements confirmed we were meeting or growing these stands towards this target.

Snags/Downed wood:

In order to ensure snags and downed wood components in the harvested areas, the following steps will be taken:

- All snags, unless determined to be a safety hazard, will be reserved from cutting.
- Highly defective trees will be reserved from cutting.
- Trees with minor defects will be mechanically high-stumped as appropriate for snag creation.
- Non-merchantable segments of felled trees will bucked out and left on site or returned from the landing and scattered within the harvest unit.

Summary of Timber Harvest Operations by Area

Table 3. Summary of Timber Harvest Operations in each Management Basin. All values are in net acres.

Management Basin	Partial Cut	Clearcut
Sun Pass State Forest	1021	0
Gilchrist State Forest	2815	0

Sun Pass State Forest

Timber harvest operations in Sun Pass for FY 2020 will be partial cut harvests intended to reduce stocking levels while retaining the uneven aged characteristics of the stands. Thinning will be primarily from below, removing suppressed understory or codominant individuals, but overstory trees will be cut as needed to ensure continued stand growth. Group selection cuts will be incorporated into the marking prescription. These 2-5 acre patches will typically be tied into existing stand openings and will provide planting sites to ensure a new cohort. Group selections will be limited to 10% of the total sale area. Highly defective trees will be reserve marked in order to provide snags and down wood for wildlife habitat.

Post-harvest the group selects will be planted with ponderosa pine seedlings. Interplanting of understocked areas will may occur as needed. The remaining stands will be grown forward with another entry anticipated in approximately 20 years.

Gilchrist State Forest

This plan proposes 3 timber sales located in the Gilchrist State Forest, Shipwreck, Up and Up, and Off the Edge. These sales consist of 2,815 acres of partial cut harvest. Rather than the removal of saw timber these sales are focused on the removal of overstocked, small diameter, sub-merchantable trees which will be typically removed as wood pulp. These projects are supported by the management strategies from the 1995 Eastern Region Long-Range Forest Management Plan and policy direction as stated during the February, 2010 Board of Forestry meeting that approved the initial acquisition of the 43,235 acres of the Gilchrist State Forest:

“It is proposed that the lands acquired shall be designated as approximately 42,535 acres Silviculturally Capable and 700 acres Non-Silviculturally Capable. The Gilchrist tract forestlands will be managed consistent with the approved Eastern Oregon Region Forest Management Plan, which calls for uneven-aged management to provide a range of forest values. Following a post-acquisition study and planning phase, specific plans for managing the Gilchrist lands will be incorporated into the implementation plan and annual operations plans for the Klamath-Lake District.”

Forest Roads Management

Overview

All of the road management activities proposed in 2020 will be associated with the proposed timber sales. Minimal construction of new roads is anticipated and road improvements will be limited to that which is necessary to conduct timber harvest operations. Where feasible, roads that will not be utilized until the next harvest entry, approximately 20 years, will be closed following harvest.

Refer to Summary Table A-3 for the Forest Roads Summary of the 2020 AOP

Road Improvement

All timber sales will require road improvement either to access the sale area or to open interior roads to facilitate logging. This AOP proposes to improve 8 miles of road. Road improvement will consist of opening previously closed roads, removing encroaching brush, and minor reshaping of the roads surface as necessary for travel and drainage.

- Peg Leg – 5 miles
- Seaside – 3 miles

Road Access Management

Whenever possible, existing roads are used to access the sale area. Emphasis is placed on closing or vacating roads; whether or not they are constructed for a particular sale. All fiscal year 2020 sales will be accessed using ODF owned road systems.

Road Maintenance

Nearly all of the road maintenance is associated with timber sales and is accomplished through timber sale contracts as project work. Road maintenance other than project work is generally limited to emergency repairs such as storm damage repair.

Road maintenance general consists of brushing roads along the haul route as well as spot rocking, reshaping, and maintaining drainage on portions of our main road systems to keep it in good condition for seasonal traffic. During the summer months, road watering is utilized to keep the road surface intact as well as providing good visibility for any traffic using the roads during active hauling.

Management of Rock Source/Supply

There are no established rock sources on state owned property in the district. All needed rock will be purchased from local suppliers. Rocking will be limited to what is necessary for road maintenance associated with timber harvests.

Land Surveying

No Land Surveys are anticipated for FY 2020.

Young Stand Management

Refer to Summary Table A-4 for the Reforestation and Young Stand Management Summary of the 2020 AOP.

Site Preparation

No site prep is planned other than what is indirectly accomplished through timber harvest activities. Tree planting is planned for the first planting season following harvest operations utilizing the disturbance from the harvest to minimize competition from competing vegetation.

Seedlings / Nurseries

Approximately 34,000 ponderosa pine and 4,000 Douglas-fir seedlings have been ordered for outplant in Sun Pass State Forest.

Planting

Approximately 81 acres will be planted in the Steep Puppy and Shoestring timber sales. Planting will be a mix of initial planting in the group selection cuts in both sales as well as interplanting of

understocked areas within the timber sales. Initial planting is anticipated to be at a rate of 436 trees per acres with interplanting rates varying based on stocking levels.

Vegetation Management

Klamath Lake District, Gilchrist State Forest was awarded a Western States Fire Manager Grant. The goal of this grant is to prevent catastrophic wildfires from threatening communities by reducing fuels. Specifically this project will treat approximately 1,500 acres on the Gilchrist State Forest.

We will have 3 treatments:

- Property line treatment, specifically lands adjacent to the communities of Gilchrist and Crescent. Approximately 169 acres
- Roadside treatment of approximately 450 acres or 39 miles.
- Stand Treatments of approximately 900 acres.

This work will be conducted with a masticator and will treat small trees and brush to provide adequate fuel breaks within the forest.

Tree Protection

No tree protection is anticipated for FY 2020.

Pre-commercial Thinning

Sun Pass State Forest has 2 progeny plantations that were established in the 1970's. These total approximately 62 acres and are in need of a thinning to improve cone production. We have collected cones twice from these plantations and have noticed a decrease in cone production due to the overstocking in some areas of these plantations. The goal would be to thin these plantations down to an acceptable stocking to maximize cone production. This will be a mechanical thinning that would require felling and skidding the material to a landing.

An additional 188 acres are scheduled for pre-commercial thinning.

Pruning

No pruning is anticipated for FY 2020.

Invasive Species

Isolated patches of Klamath weed (*Hypericum perforatum*) have been observed and treated adjacent to Sun Mountain Road in Sun Pass State Forest. These areas will continue to be monitored and treated as necessary by district staff.

Roadside Spraying

None planned in FY 2020.

Stocking Surveys

Stocking survey will be conducted by district staff focusing on seedlings planted in the two previous planting seasons. Older planting sites will be surveyed on a case by case basis as necessary to ensure seedling growth is progressing at an acceptable rate.

Recreation Management

Overview of Recreation Management

The primary recreation strategy in the Eastern Region Long-Range Forest Management Plan is to make District forests available for informal dispersed recreation. During development of the FMP, it was determined that current users value this type of opportunity because surrounding agencies and private landowners are providing a full spectrum of more developed as well as more primitive recreation opportunities.

Facilities (Campgrounds, View Points, Trail Heads, etc.)

The Klamath Outdoor Science School (KOSS) will continue to develop facilities at the site as funding becomes available. A pavilion, restrooms, and 3 additional Yurts were constructed in 2018 and will be completed this year.

The Klamath Trail Alliance will continue to improve and maintain the Spence Mountain Trailhead located off of Highway 140 on Board of Forestry property. Possible parking expansion will be planned this year. Two new trails have been constructed across BoF lands.

Trails

The KOSS nature trail will continue to be maintained by seasonal staff as well as KOSS volunteers.

In Gilchrist maintenance will continue on the footpath connecting the high school to the bike path.

A new trail will be constructed in the Gilchrist State Forest east of the town of Gilchrist. This trail will start at the parking area south of the football field and end at the top of Crescent Butte. The construction will be performed by Gilchrist High School personnel.

Other Integrated Forest Management Projects

Aquatic Habitat Improvement

Sun Creek Bull Trout Restoration Project

The Klamath-Lake District in partnership with Trout Unlimited, Oregon Department of Fish and Wildlife, Crater Lake National Park, and USF&W have implemented a project to expand bull trout distribution downstream from Crater Lake National Park (Park) onto the State Forest portion of Sun Creek. This effort supports a USFW Draft Recovery Plan for Bull Trout in the Klamath Basin. Reestablishing headwater populations and increasing downstream distributions of bull trout have been presented by USFWS and ODFW as the most important recovery actions for bull trout in the Klamath Basin.

The first action completed for this restoration project was installing two temporary barriers that will prevent upstream migration of non-native fish into the bull trout recovery reach, but allow for downstream migration of bull trout. This was completed in the fall of 2010. The barriers can eventually be removed when bull trout have been established throughout Sun Creek and the threat from non-native fish has been mitigated.

Channel construction began Fiscal Year 2016 and was completed in Fiscal Year 2018. The end result of this project is to divert Sun creek from its Current channel downstream of these barriers and realign it with its historic channel and connect to the head of the Wood River. A piped irrigation supply will be constructed the summer of 2020. This will begin at the fish screen and head south across Sun pass State forest.

This approach (installation of barriers and removal of non-native fish with chemical treatment) was used in the upstream portion of Sun Creek flowing through the Park. The Park project has been declared a success with large increases in bull trout population and distribution within the park. Crater Lake National Park will continue to monitor the Sun Creek barriers and bull trout populations in Sun Pass.

Land Exchange

District personnel will work on developing the Land Acquisition and Exchange Plan as time and workload allow.

Firewood Cutting Program

The Klamath-Lake District will continue to issue personal firewood cutting permits for areas where sufficient amounts of wood are available. The public may call our office to inquire about the availability of wood cutting areas. Permits will be issued only during the months outside of fire season.

A limited number of personal firewood permits will be issued, on a first come-first served basis with a limit of one per individual or household within a 12 month period. At this time, there is no fee for the permit which allows removal of 4 cords of firewood. The Oregon Department of

KLAMATH-LAKE 2020 ANNUAL OPERATIONS PLAN
FINAL

Forestry does not guarantee the quality or availability of wood when issuing firewood cutting permits.

Designated firewood cutting areas will be marked on the permit map, which excludes active and sold timber sales, recreation sites, and planned operations. Active sales will be posted with “No Firewood Cutting” signs.

Non-Timber Forest Products

Mushroom and cone collection permits are offered on the District.

Planning

Below are the significant district-level planning projects planned for FY 2020.

Stand Level Inventory and Other Vegetation Inventories

LiDAR is scheduled to be flown on the Gilchrist State Forest.

The LiDAR flights are scheduled to be flown this summer. In conjunction with the LiDAR flights, we are planning to install roughly 100 field plots that will serve the dual purposes of LiDAR training sites and growth & yield model calibration. This LiDAR-based forest inventory project on the Gilchrist State Forest will serve as a pilot project to demonstrate the effectiveness of our proposed new forest inventory system before potentially embarking on a much larger project on the North Coast next year.

The end product will be a wall-to-wall inventory of the Gilchrist State Forest that can be used to estimate current standing inventory, project future growth rates, and evaluate the statistical confidence of this information. Resource maps of selected inventory metrics (forest type, board volume, basal area, etc.) will also be provided at multiple scales (30m pixels, stand polygons, management units).

District personnel will work on SLI as time and workload allow.

Fish and Wildlife Surveys

Planned timber sales will have pre-operational surveys for northern goshawks conducted if habitat is present and surveys are recommended by Salem staff.

Crater Lake National Park staff will continue to monitor Bull Trout migration above the barriers that were installed on Sun Creek.

Pileated woodpecker surveys in Sun Pass State Forest will continue in FY 2020.

Research and Monitoring

None planned for FY20.

Other Planning Operations

None planned for FY20.

Public Information and Education

Public information and involvement will include public review and comments on the 2020 AOP. In addition, informal public review and comment on all district State Forest management activities on an ongoing basis is expected and welcomed.

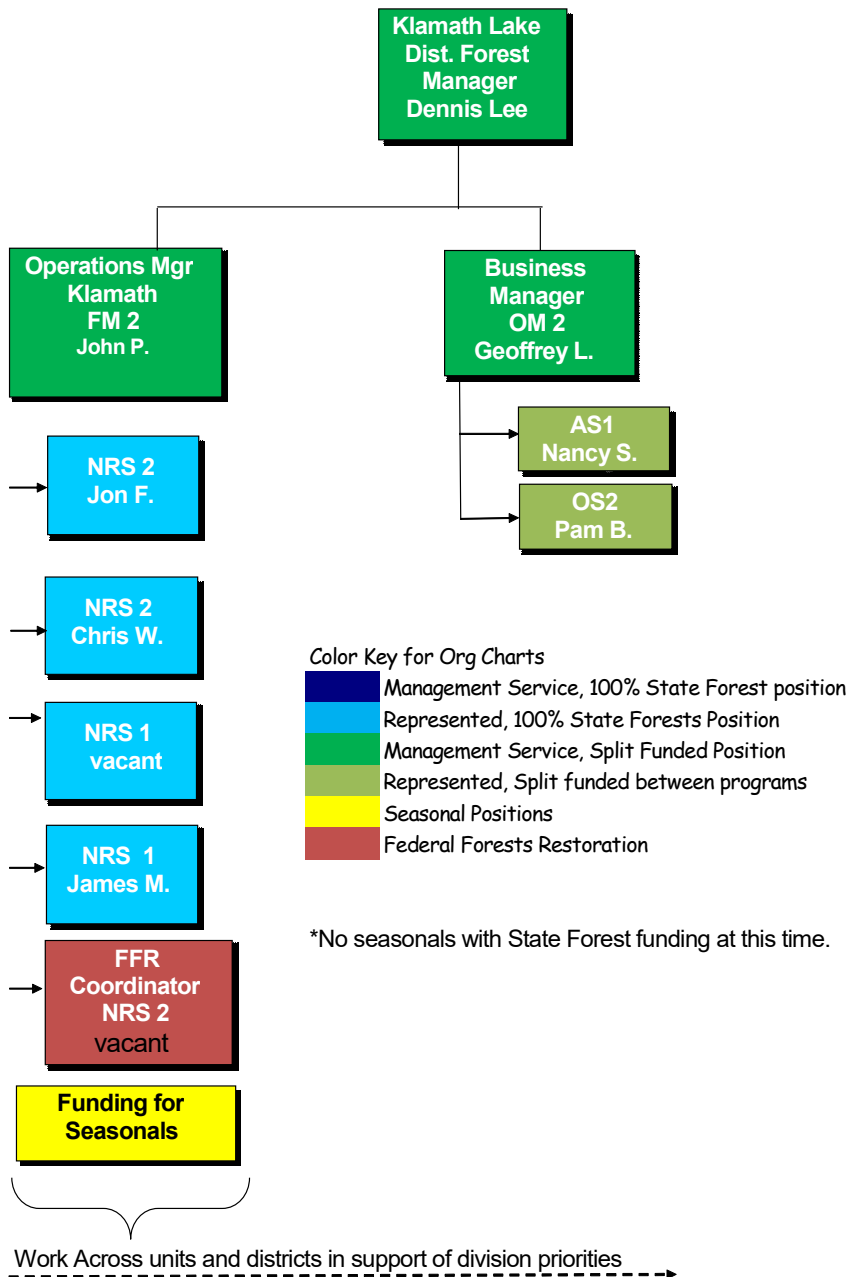
Administration

There are currently five full time foresters (Forest Manager 2, two Natural Resource Specialist 2, and two Natural Resource Specialist 1) in the Klamath-Lake District State Forests Unit. These foresters perform all of the tasks normally handled by the engineering, marketing, reforestation/intensive management, GIS, T&E, and planning specialists in the larger districts. An additional Natural Resource Specialist 2 FFR Coordinator is supervised by the State Forest Unit Manager.

The State Forest budget partially funds the Area Staff, District Forester, and Administration Staff.

District Organization

Klamath Lake District State Forest Organization



APPENDIXES

A. Summary Tables

- a. Harvest Operations – Financial Summary
- b. Harvest Operations – Forest Resource Summary
- c. Forest Road Management Summary
- d. Reforestation and Young Stand Management Summary
- e. Recreation Management Summary

B. Map Section

- a. Harvest Operations Vicinity Map
- b. Include other maps that support the AOP

C. Consultations with Other State Agencies

This appendix summarizes the results of consultations with the Oregon Department of Fish and Wildlife and other agencies, as appropriate. This appendix contains any written comments that we received from state agencies.

D. Public Involvement

This appendix describes the results of the public involvement process of this AOP and will be added prior to its approval.

E. Pre-Operations Reports

Pre-Operations Reports are available from the district upon request.

TIMBER HARVEST OPERATIONS - FINANCIAL SUMMARY

District: Klamath-Lake (Sun Pass)

Fiscal Year: 2020

Date: 01/10/2019

Primary Operation	Fund %		County	Sale Quarter	Net Acres		Volume (MMBF)			Value		
	BOF	CSL			Partial Cut	Clear-cut	Con-ifer	Hard-woods	Total	Gross	Projects	Net
Peg Leg	100%	0%	Klamath	4	666	0	4.0	0.0	4.0	\$799,200	\$23,000	\$776,200
Seaside	100%	0%	Klamath	4	355	0	2.2	0.0	2.2	\$520,200	\$19,800	\$500,400
	0%	0%							0.0			\$0

Total:	1,021	0	6.2	0.0	6.2	\$1,319,400	\$42,800	\$1,276,600
---------------	-------	---	-----	-----	-----	-------------	----------	-------------

District: Klamath-Lake (Gilchrist)

Fiscal Year: 2020

Date: 01/10/2019

[illegible]

Total:	2,815	0	2	0	2	\$22,510	0	\$22,510
---------------	-------	---	---	---	---	----------	---	----------

Alternate Operations

[illegible]

PRIMARY HARVEST OPERATIONS - FOREST RESOURCE SUMMARY

District: Klamath-Lake

Fiscal Year 2020

Date: 01/10/2019

This table lists Forest Resources and other issues addressed within Pre-Operations Report due to their presence within or near harvest operations

Primary Harvest Operations	Unit (Optional)	Forest Health Issues ¹	Invasive Species	LYR/OFS Structures ²	Landcape Design LYR/OFS ³	Install/Replace Culverts on Fish Bearing / Perennial Streams	Harvesting within 100' of Fish Bearing Stream	Domestic Water Source	Potential Stream Habitat Improvement ⁴	Within Aquatic Anchor	Within Terrestrial Anchor	Operating within a NSO Provincial Circle (BA Required)	Operating within a MMMA (BA Required)	Murrelet Timber Sale Screening Process Required (MM Policy 2.27)	T&E Fish Adjacent to Harvest Unit / Haul Route ⁵	T&E Plants	Geotechnical Issues Needing Field Review	Recreation Sites	Cultural Resources	Scenic Resources	Other Resources or Issues
Off the Edge																					
Peg Leg																					
Seaside																					
Shipwreck																			X		
Up and Up																					

¹ A 'x' (in any column) indicates yes the resource or other issue occurs within or near the harvest operation and is addressed by the Pre-Operations Report

² A 'x' indicates the harvest operation contains stands that are currently in a Layered or Older Forest Stand Structure

³ A 'x' indicate that the operation contains areas that have been designated for the development of complex forest stands (LYR/OFS)

⁴ The final decision on these projects will occur during sale preparation and inconslutation with ODFW.

⁵ This table lists harvest operations (units or log haul routes) that are adjacent to streams that are known to contain T&E fish. The Pre-Operation Report identifies whether T&E fish are present in the basin.

ALTERNATE HARVEST OPERATIONS - FOREST RESOURCE SUMMARY

This table lists Forest Resources and other issues addressed within Pre-Operations Report due to their presence within or near harvest operations

[illegible]

¹ A 'x' (in any column) indicates yes the resource or other issue occurs within or near the harvest operation and is addressed by the Pre-Operations Report

² A 'x' indicates the harvest operation contains stands that are currently in a Layered or Older Forest Stand Structure

³ A 'x' indicate that the operation contains areas that have been designated for the development of complex forest stands (LYR/OFS)

⁴ The final decision on these projects will occur during sale preparation and in consultation with ODFW.

⁵ This table lists harvest operations (units or log haul routes) that are adjacent to streams that are known to contain T&E fish. The Pre-Operation Report identifies whether T&E fish are present in the basin.

FOREST ROADS SUMMARY

District: Klamath-Lake

Fiscal Year: 2020

Date: 01/10/2019

Primary Operations	Construction		Improvement		Other Projects	Total Project Costs	Gross Value of Operation	Total Cost as a percent of Gross Value	Comments
	Miles	Cost	Miles	Cost					
(Operation Name)	0.0	\$ -	0.0	\$ -	\$ -	\$ -	\$ -	0%	
Off the Edge	0.0	\$ -	0.0	\$ -	\$ -	\$ -	\$ 7,830.00	0%	
Peg Leg	0.0	\$ -	5.0	\$ 3,000	\$ 20,000.00	\$ 23,000	\$ 799,200.00	3%	
Seaside	0.0	\$ -	3.0	\$ 1,800	\$ 18,000.00	\$ 19,800	\$ 520,200.00	4%	
Shipwreck	0.0	\$ -	0.0	\$ -	\$ -	\$ -	\$ 6,860.00	0%	
Up and Up	0.0	\$ -	0.0	\$ -	\$ -	\$ -	\$ 7,820.00	0%	

Total	0.0	\$0	8.0	\$4,800	\$38,000	\$42,800	\$1,341,910	3.2%	
--------------	-----	-----	-----	---------	----------	-----------------	--------------------	-------------	--

Alternate Operations

Freemont Dragon	0	\$ -	0	\$ -	\$ -	\$ -	\$ 6,620.00	0%	

Road Projects Not Associated with Harvest Operations in this AOP

Operation	Construction		Improvement		Other Projects	Total Project	Funding Source	Comments
	Miles	Cost	Miles	Cost				
		\$ -		\$ -		\$ -		
		\$ -		\$ -		\$ -		
		\$ -		\$ -		\$ -		

REFORESTATION AND YOUNG STAND MANAGEMENT SUMMARY

District: Klamath-Lake

Fiscal Year: 2020

Date: 01/10/2019

Projects Conducted by ODF Staff or Contractors	Board of Forestry			Common School Forest Lands			District	
	Acres Planned	Average Cost*/Acre	BOF Cost	Acres Planned	Average Cost*/Acre	CSL Cost	Total Acres	Total Cost
Seedling / Nursery Costs	87	\$133.79	\$11,640.00			\$0.00	87	\$11,640.00
Initial Planting	87	\$178.39	\$15,520.00			\$0.00	87	\$15,520.00
Interplanting			\$0.00			\$0.00	0	\$0.00
Underplanting			\$0.00			\$0.00	0	\$0.00
Tree Protection - Barriers			\$0.00			\$0.00	0	\$0.00
Tree Protection - Direct Control			\$0.00			\$0.00	0	\$0.00
Site Prep - Chemical - Aerial			\$0.00			\$0.00	0	\$0.00
Site Prep - Chemical - Hand			\$0.00			\$0.00	0	\$0.00
Site Prep - Broadcast Burning			\$0.00			\$0.00	0	\$0.00
Site Prep - Piling Burning			\$0.00			\$0.00	0	\$0.00
Site Prep - Mechanical			\$0.00			\$0.00	0	\$0.00
Release - Chemical - Aerial			\$0.00			\$0.00	0	\$0.00
Release - Chemical - Hand			\$0.00			\$0.00	0	\$0.00
Release - Mechanical - Hand			\$0.00			\$0.00	0	\$0.00
Precommercial Thinning	182	\$274.73	\$50,000.00			\$0.00	182	\$50,000.00
Pruning			\$0.00			\$0.00	0	\$0.00
Invasive Species			\$0.00			\$0.00	0	\$0.00
Road Side Spraying			\$0.00			\$0.00	0	\$0.00
Stocking Surveys			\$0.00			\$0.00	0	\$0.00
Other			\$0.00			\$0.00	0	\$0.00
Totals	356	--	\$77,160.00	0	--	\$0.00	356	\$77,160.00

* Work to be completed by ODF staff; cost are for materials only

Projects Conducted by Inmates	Board of Forestry			Common School Forest Lands			District	
	Acres Planned	Average Cost*/Acre	BOF Cost	Acres Planned	Average Cost*/Acre	CSL Cost	Total Acres	Total Cost
Initial Planting			\$0.00			\$0.00	0	\$0.00
Interplanting			\$0.00			\$0.00	0	\$0.00
Underplanting			\$0.00			\$0.00	0	\$0.00
Tree Protection - Barriers			\$0.00			\$0.00	0	\$0.00
Tree Protection - Direct Control			\$0.00			\$0.00	0	\$0.00
Site Prep. - Chemical Aerial			\$0.00			\$0.00	0	\$0.00
Site Prep - Chemical - Hand			\$0.00			\$0.00	0	\$0.00
Site Prep - Broadcast Burning			\$0.00			\$0.00	0	\$0.00
Site Prep - Piling Burning			\$0.00			\$0.00	0	\$0.00
Site Prep - Mechanical			\$0.00			\$0.00	0	\$0.00
Release - Chemical - Hand			\$0.00			\$0.00	0	\$0.00
Release - Mechanical - Hand			\$0.00			\$0.00	0	\$0.00
Precommercial Thinning			\$0.00			\$0.00	0	\$0.00
Pruning			\$0.00			\$0.00	0	\$0.00
Invasive Species			\$0.00			\$0.00	0	\$0.00
Other			\$0.00			\$0.00	0	\$0.00
Totals	0	--	\$0.00	0	--	\$0.00	0	\$0.00

Grant Funded Activities	Board of Forestry			Common School Forest Lands			District	
	Acres Planned	Average Cost*/Acre	Cost	Acres Planned	Average Cost*/Acre	Cost	Total Acres	Total Cost
			\$0.00			\$0.00	0	\$0.00
			\$0.00			\$0.00	0	\$0.00
			\$0.00			\$0.00	0	\$0.00
			\$0.00			\$0.00	0	\$0.00

RECREATION SITE MANAGEMENT SUMMARY

District: Klamath-Lake

Fiscal Year: 2020

Date : 01/10/2019

Project	Construction Cost (Funding)		Improvement Cost (Funding)		Operations/Maint. (Funding)		Total Costs	Comments
	ODF (\$)	Other (\$)	ODF (\$)	Other (\$)	ODF (\$)	Other (\$)		
Campgrounds								
							\$0	
							\$0	
							\$0	
Designated Dispersed Campsites								
							\$0	
							\$0	
							\$0	
Day Use Areas								
							\$0	
							\$0	
							\$0	
Trailheads								
							\$0	
							\$0	
							\$0	
Interpretive Sites								
							\$0	
							\$0	
							\$0	
Other Operations								
							\$0	
							\$0	
							\$0	
							\$0	

District Total

\$0

Other Total

\$0

TOTAL

\$0

Date : 01/10/2019

Project	Construction Projects			Improvement Projects			Operations & Maintenance Projects			Total Costs	Comments
	Miles	ODF (\$)	Other (\$)	Miles	ODF (\$)	Other (\$)	Miles	ODF (\$)	Other (\$)		
Non-Motorized											
										\$0	
										\$0	
										\$0	
										\$0	
										\$0	
										\$0	
										\$0	
Motorized											
										\$0	
										\$0	
										\$0	
										\$0	
										\$0	
										\$0	
										\$0	
										\$0	
										\$0	
										\$0	
								District Total		\$0	
								Other Total		\$0	
								TOTAL		\$0	

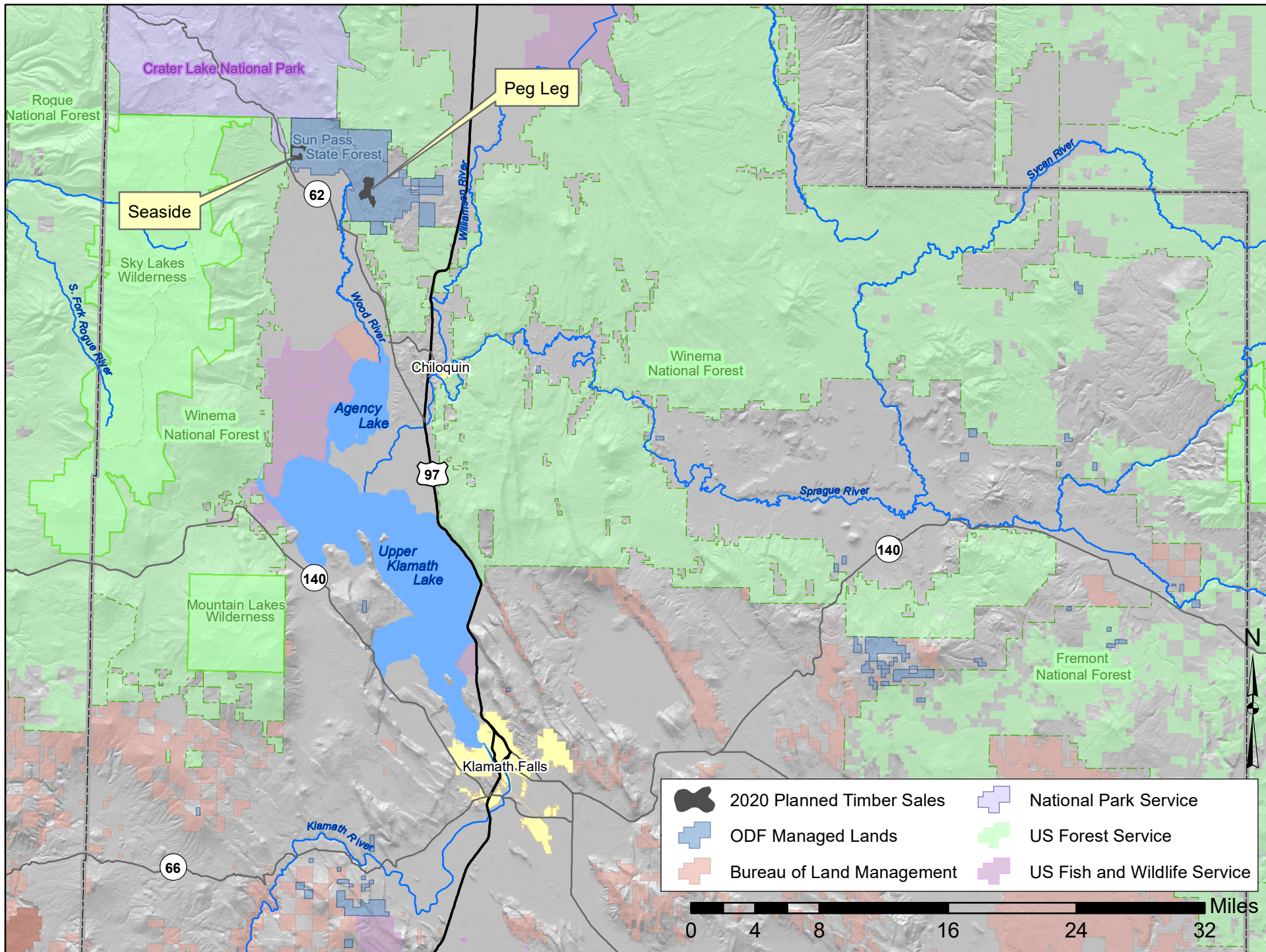
RECREATION GRANT MANAGEMENT SUMMARY

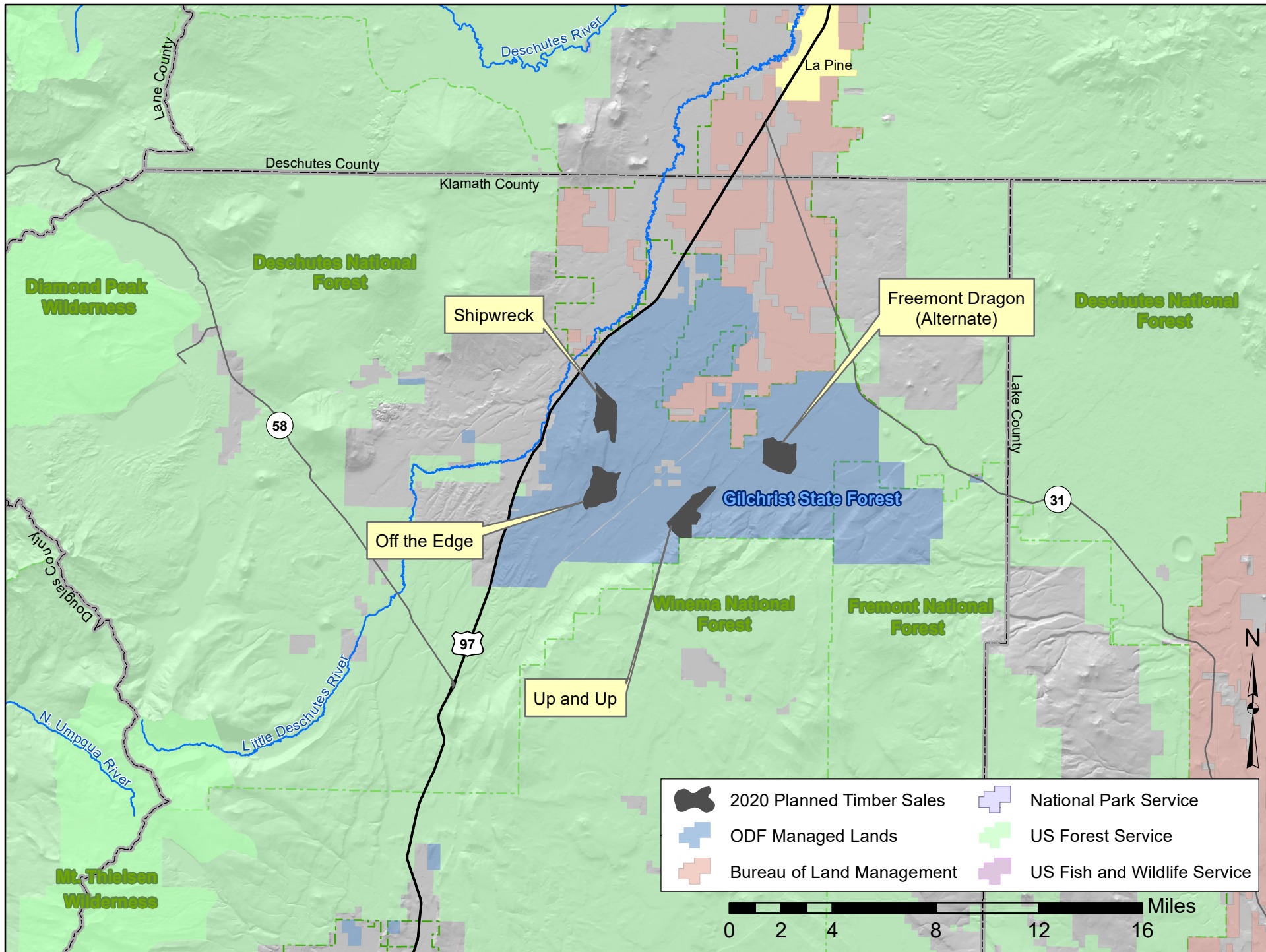
District: Klamath-Lake

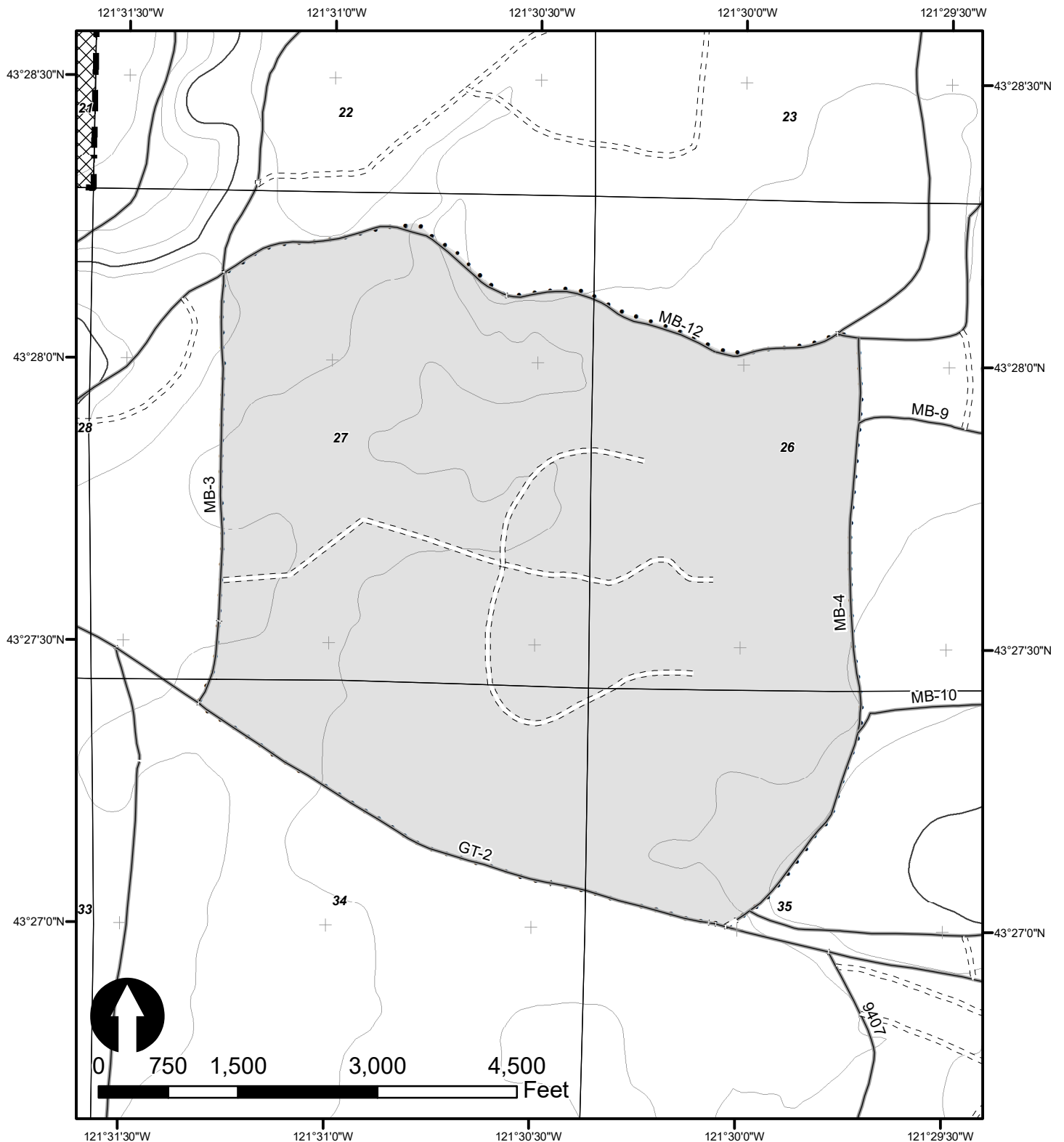
Fiscal Year: 2020

Date : 01/10/2019

Grant	Status	Award Date (actual or anticipated)	Recreation Leadership Approval	Goals/Purpose	Funding		Project Total	Comments
					Grant (\$)	Match (\$)		
					\$0	\$0	\$0	
							\$0	
							\$0	
							\$0	
							\$0	
							\$0	
							\$0	
							\$0	
							\$0	
							\$0	
							\$0	
							\$0	
							\$0	
							\$0	
							\$0	
							\$0	
							\$0	
							\$0	
					Grants Total		\$0	
					Match Total		\$0	
					TOTAL		\$0	

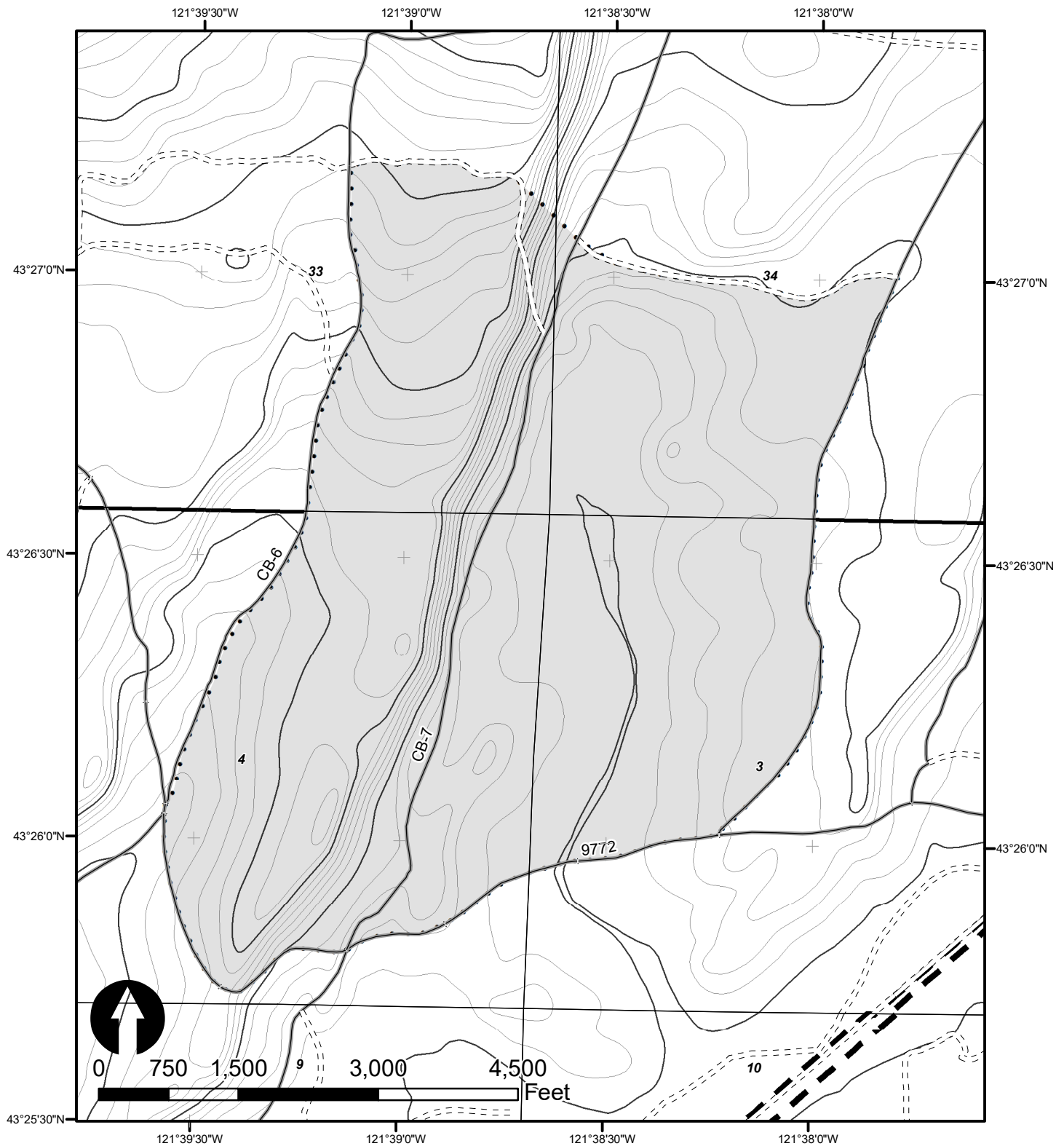






FY 20
 Klamath-Lake District
 Freemont Dragon Timber Sale
 Portions of Sections 27, 34, and 35
 T24S, R10E, Willamette Meridan,
 Klamath County, Oregon
 Approximately 946 acres

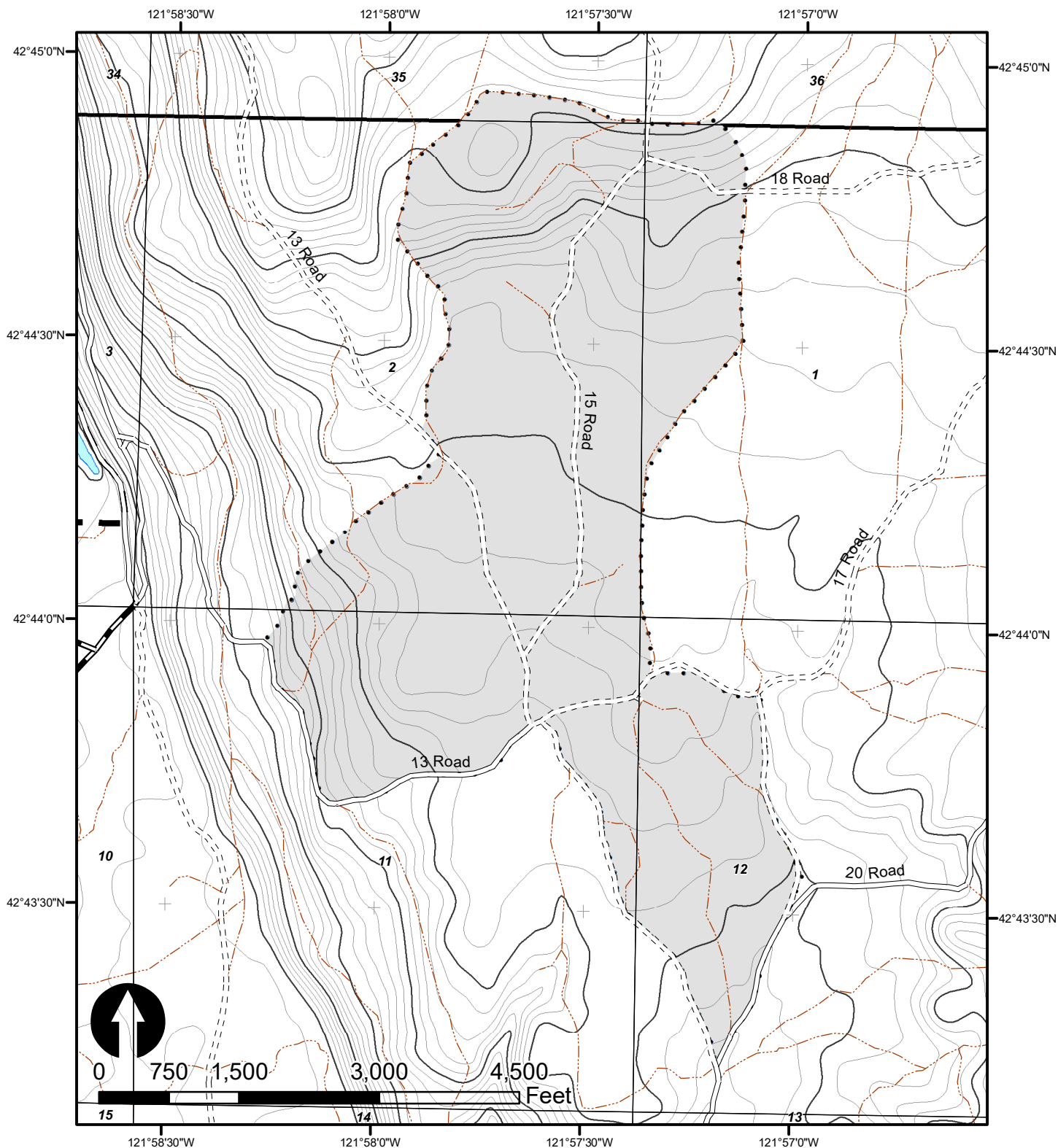
	Freemont Dragon Timber Sale		Paved Road
	Gilchrist State Forest		Surfaced Road
	US Bureau of Land Management		Unsurfaced Road
	US Forest Service		Mainline Road



FY 20

Klamath-Lake District
Off the Edge Timber Sale
Portions of Sections 33 and 34,
T24S, R9E, Portions of Sections
3 and 4 T25S, R9E,
Willamette Meridan,
Klamath County, Oregon
Approximately 979 acres

	Off the Edge Timber Sale		Paved Road
	Gilchrist State Forest		Surfaced Road
	US Bureau of Land Management		Unsurfaced Road
	US Forest Service		Mainline Road



FY 20

Klamath-Lake District

Peg Leg Timber Sale

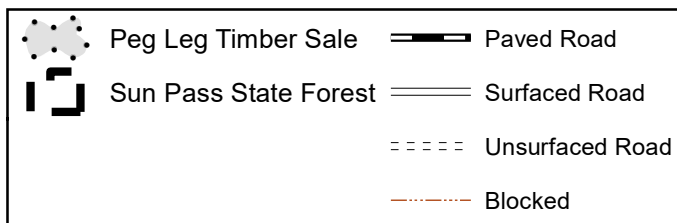
Portions of Sections 35 and 36, T32S, R7.5E,

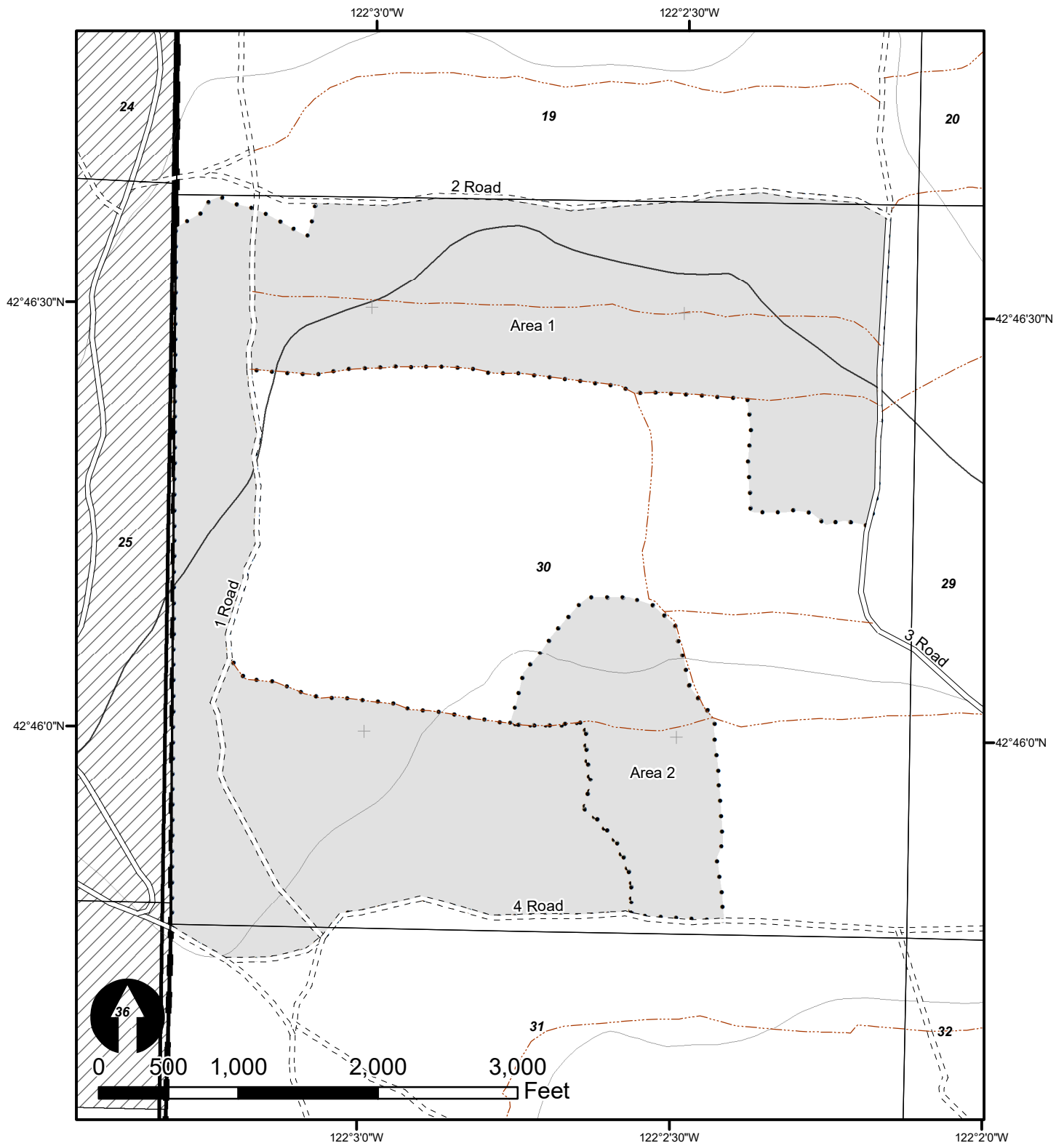
Portions of Sections 1, 2, 11, and 12

T33S, R7.5E, Willamette Meridan,

Klamath County, Oregon

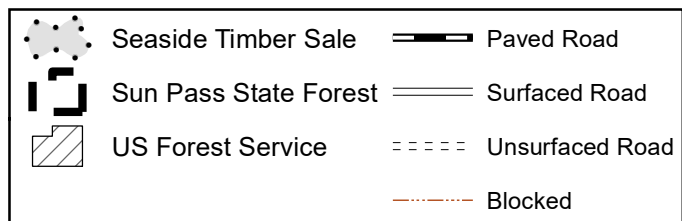
Approximately 666 acres

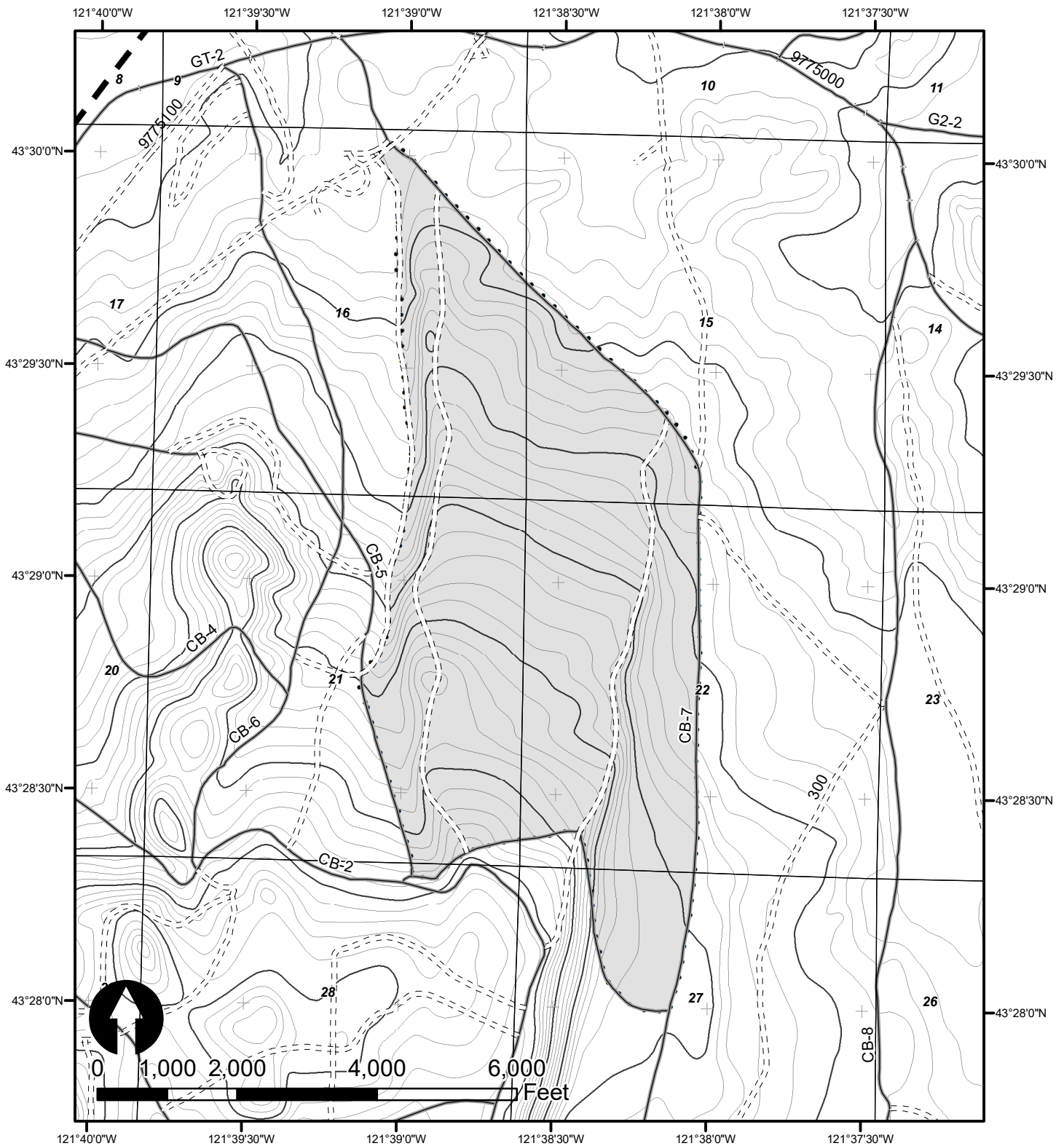




FY 20

Klamath-Lake District
Seaside Timber Sale
Portions of Section 25, T32S, R7.5E,
Portions of Sections 19, 30, and 31
T32S, R7.5E, Willamette Meridan,
Klamath County, Oregon
Approximately 355 acres

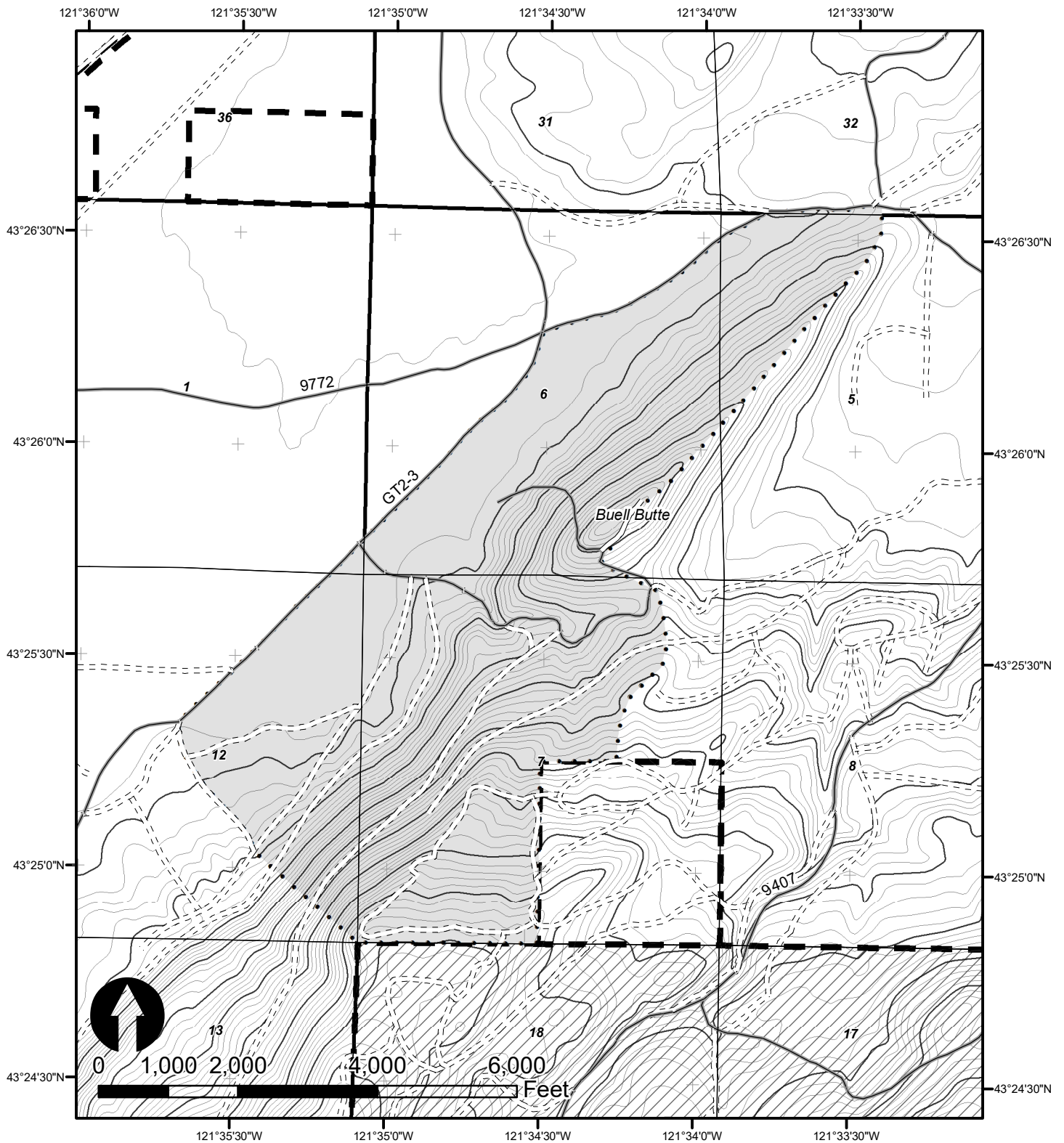




FY 20

Klamath-Lake District
Shipwreck Timber Sale
Portions of Sections 15,
16, 21, 22, 27, and 28,
T25S, R9E, Willamette
Meridan, Klamath County,
Oregon
Approximately 858 acres

	Shipwreck Timber Sale		Paved Road
	Gilchrist State Forest		Surfaced Road
	US Bureau of Land Management		Unsurfaced Road
	US Forest Service		Mainline Road



FY 20

Klamath-Lake District
Up and Up Timber Sale
Portions of Sections 1 and 2,
T25S, R9E, Portions of Sections
5, 6, 7, 18, T25S, R10E, Portions
of Section 32, T24S R10E,
Willamette Meridan,
Klamath County, Oregon
Approximately 978 acres

Created: January, 8 2019, KLD GIS

	Up and Up Timber Sale		Paved Road
	Gilchrist State Forest		Surfaced Road
	US Bureau of Land Management		Unsurfaced Road
	US Forest Service		Mainline Road

Appendix C

Consultations with Other State Agencies

This appendix summarizes the results of consultations with the Oregon Department Of Fish and Wildlife and the Oregon Department of Transportation.

- No Written comments were received from ODFW.
- Archaeologists from the Oregon Department of Transportation (ODOT) have reviewed the proposed timber harvests, road construction and recreation projects to review potential impacts to cultural resources. ODOT identified cultural resource sites on the Freemont Dragon and Shipwreck Timber Sales. All sites will be reviewed on the ground during project layout.

Appendix D

Public Involvement

PUBLIC COMMENT PROCESS FOR THE FY 2020 ANNUAL OPERATIONS PLAN

The Oregon Department of Forestry is holding a formal public comment period for the FY 2020 Annual Operations Plans from March 18 through May 2, 2019.

The purpose of the Public Comment Period is to provide an opportunity for the public to review the AOPs, ask questions, make recommendations and offer comments. As a public agency, ODF strives to operate in the best interest of Oregonians. We provide opportunities for public participation to assist us in securing the greatest permanent value from state forests for all Oregonians.

The public comment period was held and no comments specific to the Klamath-Lake FY20 AOP were received.

Appendix E

Pre-Operations Reports

Pre-Operations reports are available from the district upon request.