



# Oregon

Tina Kotek, Governor

## Department of Forestry

West Oregon District  
24533 Alsea Hwy  
Philomath, OR 97370  
(503) 929-3266  
Fax (503) 929-5549

June 30, 2023



"STEWARDSHIP IN FORESTRY"

To: Don Everingham, Area Director  
From: Michael Curran, West Oregon District Forester  
  
CC: Michael Wilson, State Forests Division Chief  
Ron Zilli, State Forests Deputy Division Chief  
Colleen Kiser, State Forests Planning Manager

Re: Information Item – Approved Annual Operations Plan for FY 2024

The FY 2024 State Forests Annual Operations Plan (AOP) for the West Oregon District has been completed. During my review of this plan, I have found that it conforms to the Oregon Forest Practices Act and is consistent with the 2010 Northwest Oregon State Forest Management Plan, the 2023 West Oregon District Implementation Plan (IP), and the FY 2024 State Forests budget instructions.

During its preparation, this plan was reviewed by technical specialists from within the department and biologists from the Oregon Department of Fish and Wildlife. Information on the consultations with other agencies can be found in Appendix C. The draft AOP also underwent a 45-day public comment period. All comments were carefully considered and incorporated where appropriate. All changes that have occurred since the public comment period ended are summarized in Appendix D of the AOP.

As prepared, this AOP consists of 9.6 MMBF of harvest volume. This volume will be achieved through 252 acres of partial cut harvest and 250 acres of regeneration harvest. There are 6 primary operations and 5 alternate operations within this plan. The operations are estimated to generate gross revenues of approximately \$3,736,050 and net revenues of \$3,399,624 (\$1,456,445 in Lincoln County; \$91,483 in Polk County; and \$1,851,695 within Benton County). The volume is in alignment with the IP range of 9 - 10 MMBF.

Reforestation and young stand management activities and investments are aligned with FMP objectives and budget considerations. Recreation facilities and trails are managed and maintained for safety, positive experiences and protecting other resources like water quality and are consistent with the FY 2024 budget level.


Approval of this plan does not constitute final approval of individual project details. Individual operations are subject to additional review processes at the district and division staff level before implementation. The planned amount and location of all management activities are based on the latest site-specific assessments and estimates of operational, T&E surveys, and market variables. Management activity levels may be adjusted and modified to account for any significant changes to these variables. The alternate sales in this Annual Operations Plan may be used to replace the primary sales that cannot be completed as planned. Actual revenue realized from this AOP could change due to market fluctuations. Harvest operations and the associated project work provide an accurate picture of what will be designed and prepared for contract in FY 2024. Due to the time lag with contract duration, most of the actual harvest operations with associated revenues will not occur for a period of one to two years beyond the end of the fiscal year. Forest management activities such as reforestation and recreation projects will occur in FY 2024

The official copy of this AOP will be on file at the district office. Additional copies are available at the State Forests Program office in Salem, and are also available on the ODF web site at:

<http://www.oregon.gov/ODF/Pages/Reports.aspx>

Approved:

Michael  
Curran



Digitally signed by Michael Curran  
Date: 2023.06.30 11:36:12 -0700

---

Michael Curran  
West Oregon District Forester

# **WEST OREGON DISTRICT**

## **2024 ANNUAL OPERATIONS PLAN**



# WEST OREGON DISTRICT

## FISCAL YEAR 2024 ANNUAL

### OPERATIONS PLAN

#### OVERVIEW

This plan describes the activities and outcomes that Oregonians can expect to see on the West Oregon District for Fiscal Year 2024. The state forest on the West Oregon District is an actively managed forest, valued by many Oregonians for its mixture of environmental, economic, and social benefits. This plan supports this mixture and provides a balance of these benefits as required by Oregon Administrative Rule (OAR 629-035-0020). We strive to manage the forest sustainably, so that the benefits from the forest can be delivered into perpetuity. The forest harvesting is planned at a sustainable level; a level that our computer models suggest can be harvested year after year without reduction.

Forest habitat is expected to develop so the forest has a mixture of habitat types for all of Oregon's native wildlife. Recreational opportunities are diverse and high quality, allowing for off-highway vehicles, bicycling, hiking, hunting, horseback riding, and more, striving to minimize user and environmental conflicts in the context of a working forest.

Managing a public forest has its challenges. In addition to the challenges of providing the opportunities described above, the forest is expected to be financially self-supporting. About two-thirds of the revenues from state forest timber sales go to local counties and other taxing districts, or to the Common School Fund. Oregon Department of Forestry (ODF) uses the remaining third of the revenue to manage the forests and keep them healthy, through activities including fire protection, tree planting, thinning, research and monitoring, recreation services, road maintenance and stream habitat improvement. We are striving to continue to provide the current opportunities and are considering a few opportunities for change.

Every year in the Forest, we learn new things and find new challenges and opportunities. In preparing this plan, the agency has consulted with ODF's wildlife biologists, aquatic specialist, archaeologist, geotechnical engineer, road engineers, as well as fish and wildlife biologists from the Oregon Department of Fish and Wildlife. The plan has undergone a 45-day public comment period. The operations were shared with the nine federally recognized Tribes in Oregon.

This Annual Operations Plan has been reviewed by the Forest Trust Land Advisory Committee (representing the counties that deeded land to ODF), the State Forests Advisory Committee (composed of Oregonians representing many interests), a variety of interest groups, as well as Oregonians in general.

The activities shown in the Summary Document and appendixes are estimates based on plans, information, and conditions as known at this point in time. The type, amount, and specific activities will be further adjusted based on field work conducted and on updated assessments that occur during the 2024 fiscal year.

### **A short summary of activities planned for the coming year:**

- Planting 118,800 trees on 297 acres and conducting vegetation management on approximately 691 acres and animal damage mitigation activities on an additional 99 acres to ensure the survival and growth of young plantations.
- Conducting density surveys for northern spotted owls and operational surveys for marbled murrelets and surveying for the presence of fish habitat if operations include unclassified streams.
- Protecting streams and water resources through a series of buffers and seasonal restrictions.
- Stream improvement projects. An initial screen by ODF's Aquatic and Riparian Specialist suggests that there may be opportunities for stream enhancement in some of the planned sale areas. Further field reconnaissance will be completed by District and Division Staff, along with Oregon Department of Fish and Wildlife, to determine possible locations.
- Habitat development projects such as retaining green trees in clearcut areas and leaving down wood, all for wildlife benefits in harvest areas and future forests.
- Maintaining 23.3 miles of road, constructing approximately 1.0 miles of road, and improving approximately 10.7 miles of road to ensure ditch water is dispersed and filtered as much as possible, keeping runoff from entering streams. These roads provide access to timber harvest as well as various recreational opportunities.
- Reviewing District roads to develop plans to block or vacate roads to help manage trash dumping, off-road use, and irresponsible target shooting.
- Proposing to harvest approximately 9.6 million board feet of timber volume, through modified clearcuts, and partial cuts generating revenue of an estimated \$3.4 Million net value.
- Providing a safe and clean environment for the myriad of dispersed activities that occur across the forest – hunting, camping, angling, sight-seeing, target shooting, mushroom picking, etc.
- Maintaining and managing the existing motorized and non-motorized trail networks through adopt-a-trail agreements, while striving to protect the trail investments, provide for user safety, and protect trees, wildlife, and water quality.

- Supporting pre-planned organized motorized and non-motorized recreation events. Evaluating new recreational proposals for fit with forest goals.
- Providing a firewood cutting program and miscellaneous forest products permits (salal, mushrooms, etc.).
- Supporting ongoing research and educational opportunities on the district, in partnership with research cooperatives and universities. Among other opportunities, the district will maintain a newly installed 7-acre progeny site in cooperation with the NW Tree Improvement Cooperative. In any one year, the district typically hosts between 4-8 research projects. Current research projects include a watershed monitoring study and a red tree vole study.

# TABLES OF CONTENTS

<b>INTRODUCTION .....</b>	<b>7</b>
<b>INTEGRATED FOREST MANAGEMENT OPERATIONS .....</b>	<b>8</b>
<b>Timber Harvest Operations .....</b>	<b>8</b>
Overview of Timber Harvest Operations.....	8
Harvest Operations within Terrestrial Anchor Sites and Aquatic Anchors.....	10
Summary of Timber Harvest Operations by Basin.....	12
<b>Forest Roads Management .....</b>	<b>15</b>
Overview.....	15
Road Construction .....	15
Road Improvement.....	16
Work Order Contracts .....	16
Road Access Management .....	16
Hydrologic Connectivity .....	16
Road Maintenance .....	17
Management of Rock Source/Supply .....	17
<b><u>Land Surveying</u>.....</b>	<b>17</b>
<b>Young Stand Management.....</b>	<b>17</b>
Seedlings / Nurseries .....	18
Site Preparation .....	18
Planting .....	19
Tree Protection .....	19
Vegetation Management – Release Treatments .....	20
Pre-Commercial Thinning.....	20
Pruning.....	20
Stocking Surveys.....	20

Invasive Species .....	21
Roadside Vegetation Management.....	21
<b>Recreation Management.....</b>	<b>21</b>
Overview of Recreation Management .....	21
Facilities (Campgrounds, Viewpoints, Trailheads, etc.) .....	22
Motorized (Off Highway Vehicle) Trails.....	23
Non-Motorized Trails.....	23
Volunteer Program and Partnerships.....	25
Event Management.....	25
Grants .....	25
<b>Other Integrated Forest Management Projects.....</b>	<b>25</b>
Aquatic & Riparian Management .....	25
Land Exchange .....	26
Law Enforcement and Public Safety .....	26
Firewood Cutting Program.....	26
Non-Timber Forest Products .....	27
<b>Planning .....</b>	<b>27</b>
Archaeological, Historical and Cultural Resources .....	27
Forest Inventory.....	27
Wildlife Surveys .....	27
Research and Monitoring.....	28
Recreation, Education, and Interpretation Program Planning – Program Wide .....	28
Other Planning Operations .....	29
<b>Public Information and Education .....</b>	<b>29</b>
<b>Administration .....</b>	<b>29</b>
<b>APPENDICES .....</b>	<b>31</b>
<b>Appendix A – Summary Tables .....</b>	<b>32</b>



**Appendix B – Vicinity Map ..... 40**  
**Appendix C – Consultations with Other State Agencies ..... 42**  
**Appendix D – Public Comment Process ..... 43**  
**Appendix E – Pre-Operations Report ..... 44**  
**Appendix F – Forest Land Management Classification ..... 45**  
**Appendix G – Landscape Design Minor Modification..... 46**

## INTRODUCTION

This annual operation plan outlines activities on state-owned forestland managed by the West Oregon District for Fiscal Year 2024, which begins July 1, 2023, and ends June 30, 2024. This document describes how the activities and projects undertaken by the district will achieve the goals, strategies, and objectives of the NW Oregon Forest Management Plan, draft Habitat Conservation Plan, and the West Oregon District 2023 Implementation Plan. Please refer to the district Implementation Plans for more specific information on physical characteristics and other district resource information.

The annual operations plan document is divided into five major categories: Integrated Forest Management; Planning and Information Systems; Public Information and Education; Administration and Appendices. A short summary of proposed activities is listed within this introduction. Appendix F describes any modifications to the Forest Land Management Classification System. Appendix G describes any modifications to the West Oregon District's Landscape Design\*.

The proposed harvest operations and activities are planned to be designed, engineered, and submitted for processing during the Fiscal Year 2024 time period. Actual on-the-ground operations will likely not occur during Fiscal Year 2024 due to the time-lag associated with contract duration, which could be one to three years after auction. In contrast, reforestation, young stand management, recreation management, and planning activities will be carried out during Fiscal Year 2024.

A 45-day public comment period was held from April 17, 2023, through May 31, 2023. A summary of these comments can be found in Appendix D. The District Forester has reviewed and considered all comments received before approving this plan.

Accomplishments of forest management activities that occurred under previous annual operations plans can be found in several reports, including the *State Forester's Annual Report for the Association of Oregon Counties* and the *Common School Forest Lands Annual Report*. These reports are available through the local district office or online.\*\*

\*Minor/major modifications and the procedures for making these changes are described in West Oregon District Implementation Plan.

\*\*The State Forests' individual district annual reports are available on the Oregon Dept. of Forestry website under "Reports." You can access here: <http://www.oregon.gov/ODF/Pages/Reports.aspx>

# INTEGRATED FOREST MANAGEMENT OPERATIONS

## Timber Harvest Operations

### Overview of Timber Harvest Operations

All of the Primary and Alternate harvest operations and many of the other forest management activities have been reviewed by ODF’s wildlife biologists, aquatic specialist, archaeologist, geotechnical engineer, road engineer, and planning manager, and will also be reviewed by fish and wildlife biologists from the Oregon Department of Fish and Wildlife. All of the operations will be reviewed against the State Historic Preservation Office and General Land Office databases for potential impact to cultural resources. Occasionally, operations may contain a resource or activity where review with another state agency, such as the Department of Agriculture is warranted. Written comments from the external resource specialists and the resolution of those comments can be found in Appendix C.

The Fiscal Year 2024 annual operations plan is estimated to produce 9.6 million board feet in timber volume, generate gross revenues of approximately \$3,736,050 and net revenues of \$3,399,624. The volume objective is within the 9-10 million board feet range outlined in the West Oregon District’s 2023 Implementation Plan. However, some events may result in an annual operations plan volume that is outside the annual harvest objective range. These events may consist of, but are not limited to, storm damage, insect and/or disease outbreaks, timber market conditions or other significant events. Alternate timber sales included in the annual operations plan may be sold as primary operations in response to any of these circumstances.

Additional operations may produce timber volume for the district during the 2024 fiscal year but are not included in this annual operations plan. These are generally small areas, produce little volume, and/or are time sensitive in nature. These sales do not require significant effort to develop and execute and will comply with all policies, the district Implementation Plan, and the Forest Management Plan. Examples of these sales include salvage, pulp sales, removal of hazard trees, pole sales, etc.

**Table 1. Accomplishment of Annual Operations Plan Harvest Volume Compared to IP Annual Objective (Millions of Board Feet of Timber volume)**

Harvest Objectives	Fiscal Year 2023 Implementation Plan Harvest Ranges		Fiscal Year 2024 Annual Operations Plan
	Low	High	
Volume (Millions of Board Feet of Timber volume)	9	10	9.6

**Table 2. Summary of Primary Timber Harvest Operations. All values are in net acres.**

<b>2024 Annual Operations Plan</b>			
<b>Harvest Outside of Habitat Conservation Areas</b>		<b>Harvest Inside of Habitat Conservation Areas</b>	
<b>Partial Cut Acres</b>	<b>Modified Clearcut Acres</b>	<b>Partial Cut Acres</b>	<b>Modified Clearcut Acres</b>
252	250	0	0

Harvest Outside of Habitat Conservation Areas

The 250 acres of regeneration harvest planned for Fiscal Year 2024 represents less than 1 percent of the district acreage. There are three modified clearcut sales, and one combination sales that consists of both modified clearcut and thinning prescriptions.

There are two first entry moderate partial cut sales in young stands which will help improve the growing conditions within these stands.

Harvest Inside of Habitat Conservation Areas

No harvests are planned within Habitat Conservation Areas for Fiscal Year 2024

The anticipated harvest acres, volume, and revenue for each proposed operation in this AOP are listed in the “Harvest Operations – Financial Summary” Table A-1 in Appendix A.

Refer to the attached West Oregon District Financial Summary Table (Appendix A, Table A-1) and vicinity map (Appendix B) for more detail on expected outputs from planned timber sales.

Overview of Structural Components

The guidelines for managing structural habitat components listed under Landscape Management Strategy 3 in the NW Oregon State Forests Management Plan (pg. 4-52), will be followed for the Fiscal Year 2024 Annual Operations Plan. Structural components may be retained at higher levels in some units and at lower levels in other units. The intent is to achieve the targets outlined in the Forest Management Plan strategies in a given annual operations plan.

The green tree retention target for regeneration harvest units is an average of five trees per acre in the NW Oregon State Forests Management Plan. Green tree arrangements for this annual operations plan may include; scattered individual trees, clumps of trees, and trees concentrated in and adjacent to riparian management areas, inner gorge areas or headwalls. The final decision on the location and arrangement of the green trees is made while the sale is being laid out to incorporate information on potential minor tree species, unique stand features, steep slopes, visual considerations, reforestation considerations, etc. To promote diversity on the landscape a variety of green tree placement strategies will be used.

The NW Oregon State Forests Management Plan strategy for hard snags is to manage for at least two per acre on average across the landscape. The Forest Management Plan strategy for Down Woody Debris is to retain an average of 600 to 900 cubic feet of hard conifer logs (class 1 & 2) per acre during regeneration harvest. Strategies for retaining snags and down wood are determined using a current condition assessment from forest inventory data or timber cruising data. The need for snag creation in each unit is evaluated based on cruise or inventory information that documents snags in decay class 1 and 2 in the sale and surrounding

landscape. Areas with less than 2 hard snags per acre will be evaluated and an appropriate snag prescription will be developed as needed. Down Wood will continue to be created through bucking practices, leaving felled snags in the unit and tops on ground yarding areas.

The West Oregon District has experienced a number of large wind and snow break events over the last 10-15 years. This has produced a large number of residual snags and down woody debris components across the landscape where older stands are present. Due to this snag creation is not pursued. If snags are found in an area during sale layout efforts are made to leave them on the landscape where safety permits.

In addition to the leave tree strategies within the Forest Management Plan, all timber sales within Fiscal Year 2024 will also abide by the green tree retention strategies of the Draft Habitat Conservation Plan. Two trees per acre will be retained within any forest stand harvested using regeneration harvest techniques. Trees selected for retention will be outside of Riparian Conservation Areas and will be assessed during each final harvest so that selected trees will not be removed in subsequent rotations and will contribute to long-term recruitment of large diameter snags and downed wood. Overlaps may occur with the green tree retention strategies of the Forest Management Plan. Leave tree configuration will be determined during sale layout to ensure compliance with Forest Management Plan and Habitat Conservation Plan strategies.

### **Harvest Operations within Terrestrial Anchor Sites and Aquatic Anchors**

The West Oregon District Implemented Plan implemented the State Forests' Species of Concern Strategies that specifically identifies fish and wildlife species of concern on the West Oregon District. Two of these strategies are Terrestrial Anchor Sites and Aquatic Anchor sites.

- Terrestrial Anchor Sites areas are intended to benefit terrestrial wildlife species of concern, especially those associated with older forest or interior habitat conditions, sensitive to forest fragmentation, or do not readily disperse across younger forest conditions. Management within Terrestrial Anchor Sites is intended to be limited, to emulate natural small-scale disturbance patterns, and to minimize short-term negative impacts to habitat. All areas that were designated as Terrestrial Anchor Sites were designated for the development of complex structure in the Landscape Design.
- Aquatic Anchor sites are watersheds where salmon and aquatic amphibian conservation is of concern. Riparian management strategies beyond those described in the Forest Management Plan will be applied within Aquatic Anchor Sites. In addition, areas designated for the development of complex structure in the Landscape Design are clustered around streams important to fish in the Aquatic Anchor Sites.

The Species of Concern Strategies provide long term goals for Terrestrial Anchor Sites and Aquatic Anchor Sites. The management activities within those areas are designed to achieve those goals. These strategies have not identified specific limits to the total area that can be harvested within these areas; however, the district and resource specialist will be tracking the harvest trends within these areas to ensure the harvest prescriptions and rate is consistent with the goals of these strategies.

Terrestrial Anchor Sites

Since the adoption of the Terrestrial Anchor Sites in 2012, the district has not planned an operation in these areas. In the future, great care will be given in selecting stands for harvest and developing prescriptions in these areas to ensure that these harvest activities achieve the goals of the Terrestrial Anchor Sites.

Table 3 shows there are no harvest planned within the Terrestrial Anchor Sites proposed in the 2024 Annual Operations Plan and also shows the cumulative operations in Terrestrial Anchor Sites since the strategy was adopted (Annual Operations Plans 2013 through 2024).

**Table 3. Summary of Harvest Operations within Terrestrial Anchor Sites (Acres and Percent)**

Acres within Terrestrial Anchor Sites	Current Annual Operations Plan (Fiscal Year 2024)		Cumulative Harvest (Since Fiscal Year 2013)	
	Clearcut	Partial Cut	Clearcut	Partial Cut
<b>Terrestrial Anchor Site Basins</b>				
<b>Green Mountain (1,625 ac)</b>	0	0	0	0
% of Acres	0%	0%	0%	0%
<b>Wolf Creek (1,001 ac)</b>	0	0	0	0
% of Acres	0%	0%	0%	0%
<b>All TAS (2,626 ac)</b>	<b>0</b>	<b>0</b>	<b>0</b>	<b>0</b>
% of Acres	<b>0%</b>	<b>0%</b>	<b>0%</b>	<b>0%</b>

Aquatic Anchors

Increased water protection measures will be implemented on regeneration harvest operations planned within the Aquatic Anchors’s as specified in the Species of Concern strategy. Table 4 shows the current harvest and the cumulative total from Fiscal Year 2013.

**Table 4. Summary of Harvest Operations within Aquatic Anchors (acres and percent)**

Acreages	Current Annual Operations Plan (Fiscal Year 2024)		Cumulative Harvest (since Fiscal Year 2013)	
	Clearcut	Partial Cut	Clearcut	Partial Cut
<b>Aquatic Anchor Basins</b>				
<b>Little Rock Creek (4,768 ac)</b>	0	64	279	328
% of Acres	0%	1.3%	6%	6.9%
<b>Upper Yaquina – Amphibian Emphasis (3,493 ac)</b>	75	0	188	181
% of Acres	2.1%	0%	5.4%	5.2%
<b>Wolf Creek (3,194 ac)</b>	11	0	250	374
% of Acres	0.3%	0%	7.8%	11.7%
<b>All Aquatic Anchors (11,455 ac)</b>	86	64	717	883
% of Acres	0.8%	0.6%	6.3%	7.7%

## Summary of Timber Harvest Operations by Basin

In the following section, the harvest operations planned for Fiscal Year 2024 will be summarized in the context of the five management basins on the West Oregon District. Since the Forest Management Plan strategies provide standards for structural components such as green trees, snags, down wood as well as riparian protection, these are not discussed in the summary. Road strategies and standards are discussed in the Forest Roads Management section. Additional information regarding the harvest operations may be found within Table A-2, the Forest Resources Summary in Appendix A.

**Table 5. Summary of Timber Harvest Operations in each basin. All values are in net acres.**

Basin	2024 Annual Operations Plan Primary Sales	
	Partial Cut	Clearcut
Big Elk Creek	90	69
Luckiamute River	0	0
Marys River	0	50
Siletz River	64	0
Upper Yaquina River	99	131
<b>Totals</b>	<b>252</b>	<b>250</b>

### Big Elk Creek Basin

Wolf of Haul Street (Primary Sale) – This sale consists of two modified clear-cut units totaling 63 acres. The Douglas-fir and red alder timber ranges from 35 to 80 years old. All stands are in the Understory Development current condition. The Desired Future Condition is for non-complex stands. Unit 1 has many trees with broken tops as the result of an ice storm which occurred in 2014. There appears to be some *Phellinus weirii* (laminated root rot) in Unit 2 and mild Swiss needle cast infection in Douglas-fir throughout the Units. Portions of Unit 2 were previously commercially thinned. Following the completion of harvest, the sale will be planted with a mixture of species to be determined closer to the time of reforestation.

One mile of road improvement is planned.

Approximately 11 acres of the sale are located within the Wolf Creek Aquatic Anchor.

Salmon Forks Combo (Primary Sale) – 5 acres of Unit 1 and all of Unit 3 are in the Big Elk Creek Basin. Most of the sale is in the Upper Yaquina River Basin (see the Upper Yaquina River Basin section for sale details).

Thin Bear (Primary Sale) – This sale is split between the Big Elk Creek and Upper Yaquina River Basins, with the majority located in the Upper Yaquina River Basin (see the Upper Yaquina Basin for sale description).

All Terrain (Alternate Sale) – Unit 1 is in the Big Elk Creek Basin. Units 2 and 3 are in the Upper Yaquina River Basin. All units are Modified Clearcuts, totaling 43 acres. The current condition of all stands is Understory Development, and the Desired Future Condition is non-complex.

Unit 2 was commercially thinned about 20 years ago. Following the completion of harvest, the unit will be planted with a mixture of species to be determined closer to the time of reforestation.

Approximately 3.5 miles of road improvement is planned. The district will work obtain easements that are needed from Weyerhaeuser and Thompson Timber during sale layout. In addition, all logs from Unit 1 will need to be yarded to a Weyerhaeuser landing, involving yarding through young timber/brush.

Approximately 48% of the sale area is on Common School Land.

Millers Woods Thin (Alternate Sale) – This sale is split between the Big Elk Creek and Upper Yaquina River Basins, with the majority located in the Upper Yaquina River Basin (see the Upper Yaquina Basin for sale description).

### **Luckiamute River Basin**

No harvest activities are planned in the Luckiamute River Basin for Fiscal Year 2024.

### **Marys River Basin**

Proud Mary (Primary Sale) – This sale is a 50 acre modified clearcut consisting primarily of 72- to 77-year-old Douglas-fir and red alder. The stands in this sale have a current condition of Understory Development (23 acres) and Layered (27 acres). Their Desired Future Condition is non-complex. Following the completion of harvest, the unit will be planted with a mixture of species to be determined closer to the time of reforestation.

Approximately 3.2 miles of road improvement will take place.

Part of the sale is within the Little Green Northern Spotted Owl site. A biological assessment is being developed for this sale.

Bon Voyage (Alternate Sale) – This sale is a modified clearcut totaling 79 acres. The current condition is Understory Development, and the Desired Future Condition is non-complex. Following the completion of harvest, the unit will be planted with a mixture of species to be determined closer to the time of reforestation.

Approximately 0.1 miles of road construction is planned. Approximately 2.7 miles of road improvement is planned.

Double Exposure (Alternate Sale) – This sale is a modified clearcut totaling 58 acres. The current condition is Understory Development, and the Desired Future Condition is non-complex. Following the completion of harvest, the unit will be planted with a mixture of species to be determined closer to the time of reforestation.

Approximately 1.8 miles of road improvement is planned.

There is a likely beaver pond/wetland to the south of the unit what will be reviewed by Oregon Department of Fish and Wildlife and ODF biologists.

### **Siletz River Basin**

Lone Steere Thin (Primary Sale) – This is a 64-acre partial cut consisting of 34-year-old Douglas-fir. The current conditions is Understory Development, and the Desired Future Condition is non-complex. There is light Swiss needle cast infection present in the sale.



Approximately 0.1 miles of road construction is planned. Approximately 0.2 miles of road improvement is planned. Easements from Weyerhaeuser are necessary.

All of the sale is within the Little Rock Creek Aquatic Anchor.

### **Upper Yaquina River Basin**

Bark Beetle Bailey (Primary Sale) – This sale is a 75 acre Modified Clear-cut harvest of 72- to 82-year-old Douglas-fir and red alder. The stands are in current condition Understory Development (62 acres) and Layered (11 acres) and have a Desired Future Condition of non-complex. There may be a small amount of *Phellinus weirii* in the unit. Following the completion of harvest, the unit will be planted with a mixture of species to be determined closer to the time of reforestation.

Approximately 0.4 miles of new road construction is necessary to harvest this unit. In addition, 2.8 miles are planned for improvement.

The entire sale area is in the Youngs Creek-Yaquina River Aquatic Anchor which is designated as an Amphibian Emphasis Aquatic Anchor.

The sale is within the Little Green Northern Spotted Owl site. A biological assessment is being developed for this sale.

Salmon Forks Combo (Primary Sale) – This sale consists of three units, 61 acres of Modified Clear-cut and 66 acres of Partial Cut, most of which is in the Upper Yaquina River Basin. A small portion of the clearcut unit and one of the partial cut units is in the Big Elk Creek Basin. Stand ages range from 34 to 37 years old and are primarily Douglas-fir. The current condition for all stands is Understory Development and the Desired Future Condition is non-complex. There is mild Swiss needle cast and some *Phellinus weirii* in Units 1 and 3. Following the completion of harvest, the modified clear-cut unit will be planted with a mixture of species to be determined closer to the time of reforestation.

Approximately 0.4 miles of road construction and 3.0 miles of road improvement will be made. An easement from Weyerhaeuser will be needed.

Approximately 9% of the sale is located on Common School Land.

Motorized recreationists staging out of the Salmon Creek Off Highway Vehicle Staging Area travel through Units 1 and 3 via forest road to connect motorized trail segments. The district will work closely with the Recreation Unit during sale layout and contract writing to mitigate public use safety concerns.

Thin Bear (Primary Sale) – The north half of Unit 1 and all of Unit 2 are in this basin. The south half of Unit 2 is in the Big Elk Creek Basins. The sale consists of two Partial Cut units totaling 122 acres. The stands are 31–32-year-old Douglas-fir in the current condition of Understory Development and a Desired Future Condition of non-complex. There is light Swiss needle cast infection in Unit 1 and possibly small pockets of *Phellinus weirii*.

Approximately 0.1 miles of road construction will be needed. Approximately 0.5 miles of road improvement is planned. Easements from Weyerhaeuser and Oregon Department of Transportation will be needed.

Portions of the Mt. Baber ATV Club trail system pass through Units 1 and 2. The District will work closely with the Recreation Unit during sale layout and contract writing to put provisions

in place to minimize impact to the recreational trails and mitigate public use safety concerns. Opportunities will be looked at for facility improvements that could be performed during or post timber sale operations.

All Terrain (Alternate Sale) – Unit 1 is in the Big Elk Creek Basin. Units 2 and 3 are in the Upper Yaquina River Basin (see Big Elk Creek Basin section for sale description).

Millers Woods Thin (Alternate Sale) – Most of the sale is within this basin. 1.6 acres of unit are within the Big Elk Creek basin. This sale is a partial cut totaling 152 acres. The current condition is Understory Development, and the Desired Future Condition is non-complex.

Approximately 0.1 miles of road construction is planned. Approximately 2.5 miles of road improvement is planned.

Approximately 6% of the sale is located on Common School Land.

Old Highway (Alternate Sale) – This sale is a modified clearcut totaling 50 acres. The current condition is Understory Development, and the Desired Future Condition is non-complex. Following the completion of harvest, the unit will be planted with a mixture of species to be determined closer to the time of reforestation.

Approximately 4.5 miles of road improvement is planned.

## **Forest Roads Management**

### **Overview**

The State Forest road network provides access for forest management activities, fire suppression, and recreation. Visions, guiding principles, and goals for managing the road network are discussed in the Northwest Oregon State Forests Management Plan (April 2010) and the State Forest Roads Manual (September 2006). The State Forest Roads Manual also provides standards and guidance for all road management activities and definitions, road classifications and other terms. The newly formed Area Roads Maintenance Team will assist the district with developing a district wide road maintenance plan and will also assist, as available, in developing roads maintenance contracts.

Most of the roadwork in this annual operations plan is being conducted to construct spur roads and to improve haul routes for the Fiscal Year 2024 timber sales. Some roadside vegetation management and rock stockpile creation will benefit access outside of the Fiscal Year 2024 timber sale haul routes. This section describes the types of road management activities that will occur in Fiscal Year 2024 and the attached Forest Roads Summary Table (Appendix A, Table A-3) describes the anticipated total amounts.

### **Road Construction**

The district evaluates each timber sale and strives to build the minimum number of roads required, except where the District has identified road systems that can be moved away from existing streams to mitigate hydrological issues. This may result in more road miles, but relocating roads away from the stream network is beneficial for watershed processes. The district tries to limit the number of stream crossings where possible when building new roads. Where stream crossings are unavoidable, new and replacement stream crossings will be designed to meet National Oceanic and Atmospheric Administration Fisheries (2022)

passage criteria to maintain passage for covered fish species where applicable and follow best management practices outlined in the State Forest Roads Manual. All planned road construction is reviewed by the geotechnical specialist to ensure that new roads are located in stable locations to provide the best protection to natural resources while meeting the objective of the road. Discussions are held regarding the long-term use of the road by district staff for reforestation and future management, and whether a road needs to be surfaced or if it can be left unsurfaced. Financial costs of the construction and long-term maintenance are considered as well as potential impact to sale operations, anticipated closures related to weather, and long-term impact to wildlife and recreation.

## **Road Improvement**

Road improvement projects will use ODF road inventory protocols to assess existing road drainage, stability, surfacing and vegetation conditions, and to aid in the development of transportation system improvement plans. The majority of this improvement work will be performed on collector and spur roads and will consist of installing new cross drains and disconnect culverts, replacing culverts, ditchline improvements, and new surfacing.

## **Work Order Contracts**

Road maintenance and improvement projects not associated with a timber sale will be primarily facilitated through Work Order Contracts. This process uses the same protocols and guidance outlined in the road improvement and maintenance sections but allows the department to be efficient in accomplishing this work and prepare for future projects. The work associated with these contracts can include bridge design, fish culvert installation, road brushing, road maintenance and repair, or repairing/replacing gates.

### Other Planned Road Projects to be completed by Work Order Contract in the Fiscal Year 2024 AOP:

- None

## **Road Access Management**

State Forests are managed to support public access while providing for community safety, environmental benefits, protection of state and private assets, and wildfire prevention. Following timber harvest, roads are evaluated for their public access benefits and costs. Some roads are closed and vacated to reduce the maintenance costs and to minimize impacts to the environment. These areas remain open for walk-in use. The Department retains the option of gating roads if vandalism, neighbor concerns, or excessive road damage from public use becomes a problem in particular areas. The public may still access these areas on foot, bicycle, or horseback. Several sales are accessed across private lands and portions of one sale is on a gated road.

## **Hydrologic Connectivity**

Hydrological connectivity surveys are performed on haul routes during sale layout. ODF prioritizes road improvement projects that address hydrologic connectivity and culvert replacements that are barriers to fish migration on active or planned haul routes and sites of opportunity near active or planned haul routes. Road maintenance investments are made to support forest operations, protect existing road infrastructure and water quality, and provide for

safety improvements. ODF also closely monitors road conditions on active haul routes and performs additional patrols and assessments during and after inclement weather events.

## **Road Maintenance**

Roads will be maintained as necessary to protect water quality and the road system asset value. Road maintenance activities will follow the maintenance guidance in Chapter 7 of the Forest Roads Manual, Forest Practices rules, and Chapter 4 of the Draft Habitat Conservation Plan. Road maintenance is accomplished under timber sale contracts for roads used for hauling forest products, using the State Forest road crew or work order contracts. Maintenance is focused on ensuring proper drainage to prevent sediment entering streams. Collector roads and roads in active sale areas need and get the most maintenance. District personnel respond to heavy storms and thaw periods by performing road inspections, maintenance through existing contracts, and where necessary, stopping heavy truck use during periods when roads cannot handle traffic without damage to water quality or the road asset.

## **Management of Rock Source/Supply**

The District plans for durable rock to be used on in-sale spurs and haul routes, which allows for year-round harvest opportunities on most timber sales. Purchasing rock from commercial sources is necessary to provide road rock for planned road construction, road improvement, and road maintenance activities. The district has not been successful in locating viable rock sources on district lands.

## **Land Surveying**

Every year surveying needs are analyzed and planned to be kept at a minimum level while ensuring property lines and corners are clearly marked. Survey work may be accomplished through service contracts with licensed professional land surveyors, cost sharing with adjacent landowners or utilizing the licensed surveyor on staff with ODF. Land surveying will be necessary on the following primary sales:

- No property line surveys are required for Fiscal Year 2024 primary sales.

## **Young Stand Management**

The State Forest strategy is to use a range of silvicultural tools to establish and maintain diverse stands of well-adapted natural species throughout the landscape to meet the objectives and goals in the Forest Management Plan and District Implementation Plan. These tools include site preparation, planting, tree protection, vegetation management, pre-commercial thinning, early commercial thinning and interplanting or replanting. Each practice must be considered and prescribed for individual stands on a site-specific basis.

This section describes the types of reforestation and young stand management activities that will occur in Fiscal Year 2024, and the attached Young Stand Management Table (Appendix A, Table A-4) describes the anticipated total amounts. The location and amount (acres) of these activities are estimates based on plans, information, and conditions as known at this point in time. The type, amount and specific stand management prescriptions will be further adjusted based on when existing harvest units are completed and on updated assessments and surveys that will occur during and after the 2024 growing season.

The majority of reforestation activities will be completed by using experienced contractors. A portion of the activities will be completed by utilizing crews from a Correctional Institution. These crews work on activities such as inter-planting, tree protection, mechanical hand release, and noxious weed control.

## **Seedlings / Nurseries**

In order to meet the goals of the Forest Management Plan, the State Forests Program requires tree seedlings that are physiologically healthy and best suited for the planting sites. A wide variety of native species seedlings are grown through contracts at forest nurseries throughout the Pacific Northwest to meet the reforestation needs. Seedlings are grown in three different stock types: 1) plug seedlings or one-year-old container grown seedlings, 2) plug +1 seedlings which are grown one year in a container followed by a second year in a bare root bed, and 3) straight bare root seedlings grown from seed in a bare root seed-bed and then transplanted to a wider spacing transplant bed. The budget accounts for a string of growing costs over several years rather than just those costs of the trees being grown and planted in the winter. The budget for seedlings includes portions of the costs for growing seedlings for three planting years. Additionally, there are costs associated with the seed production, transportation costs and various costs associated with packaging and freezer and/or cooler storage. The individual species mixture and stock type used for a particular reforestation unit is determined after the final inventory from the forest nursery and varies by District.

All State Forest's Douglas-fir seedlings are grown from improved seed. Most minor species seed also comes from tree improvement coop orchards. For Fiscal Year 2024 outplant, district seedlings are being grown at the IFA, Weyerhaeuser, PRT and Lewis River nurseries. Species consist of Douglas-fir (including Swiss Needle Cast resistant stock), western redcedar, western hemlock, grand fir and ponderosa pine.

## **Site Preparation**

Site preparation is any planned measure to prepare a site to allow for favorable growing conditions for newly planted seedlings. More than one of these techniques may be used for any given site based on the attributes and reforestation prescription for the site. The three main site preparation techniques are mechanical, chemical and slash burning.

- 1) Slash Burning: Slash burning can be accomplished by broadcast burning the entire unit or burning piles that result from mechanical site preparation.
- 2) Mechanical: Mechanical site preparation is the use of mechanized equipment to rearrange or alter forest slash and/or disturb the forest surface layer and vegetation to create seedbeds or planting spots. Planting spots are created in a fairly even distribution. Dense slash concentrations created during timber harvest may be mechanically piled as part of the timber sale contract.
- 3) Chemical: Chemical site preparation involves the application of herbicides to control competing vegetation before planting or natural regeneration and during the early stages of seedling establishment. Applications occur by two primary methods: aerially by helicopter or ground based with the use of backpack application equipment. The objective is to control brush species to allow stand establishment and maintain 2-3 years free of significant competing vegetation. The actual site preparation plan will be

prepared in late spring when harvest unit availability and brush development is better known.

## **Planting**

Tree planting operations are conducted for various reasons. These include meeting Forest Practices Laws, quickly establishing a new stand of trees after timber harvesting, and increasing species diversity in the area and across the landscape. Planting is comprised of matching the appropriate species and stock type to the planting site. Forest health strategies are addressed on a site-specific basis when the planting plan is developed. Site specific prescriptions consider target species, aspect, elevation, soil types, Swiss Needle Cast risk where applicable, *Phellinus weirii* (laminated root rot) presence, required stocking guidelines, natural advanced regeneration, and the desired future condition of the stand. To accomplish this, a mixture of species are planted to provide for a healthy, productive, and sustainable forest ecosystem over time and to be more resilient to climate change. The following are different types of planting.

- 1) Initial Planting: Planting activities establish the desired species and stocking levels to meet the goals in the Forest Management Plan and Forest Practices Laws. Planted seedlings will be well suited and adapted to the reforestation site and where appropriate, a mixture of species may be planted to increase diversity on the landscape.
- 2) Interplanting: Interplanting may occur when stocking levels fall below or are at risk of falling below Forest Practices Act (FPA) minimums. In certain instances, interplanting will occur to increase stocking on high quality sites to fully capture the site. In other areas, lower stocking will be acceptable, as it will provide high quality early seral habitat while still meeting FPA requirements.
- 3) Underplanting: This type of planting is occasionally conducted after thinning in order to introduce both species diversity and an additional future layer of structure into a stand.
- 4) Natural Regeneration: Units or portions of units are assessed prior to planting. Natural regeneration is considered primarily in western hemlock stands that have been salvaged from windstorms, where small gaps and holes less than 2 acres have been created in partial cut units, and in unit rock outcrops or cliffs. Natural regeneration of red alder and other minor species is used to provide diversity in all harvest units.

## **Tree Protection**

Animal damage on newly planted seedlings reduces their overall size, health and vigor. Extensive damage can lead to plantation failure and require interplanting, may extend the time to achieve free to grow status as defined by the Forest Practices Act and prevent meeting Forest Management Plan goals. Deer and elk, as well as mountain beaver, can heavily damage young seedlings. Various tree protection strategies are applied to help re-establish trees in areas with high concentrations of these species. Most commonly, various types of physical barriers (bud caps, vexar tubes, etc.) help prevent damage from big game. Direct control includes trapping mountain beaver in highly populated areas prior to planting in order to prevent damage to trees once they are planted.

## **Vegetation Management – Release Treatments**

Vegetation management is done to reduce light, moisture, or nutrient competition from undesirable vegetation in a young stand of trees to improve survival and growth. It can also be used to alter tree species composition under pressure from insect and disease and favor species that are tolerant or resistant to the threat. Vegetation management may be required to meet Forest Practices reforestation stocking requirements, the NW Oregon State Forests Management Plan, and the District Implementation Plans. There are two types of vegetation management, chemical and manual release treatments. They are described below.

Chemical Release: Chemical release treatments involve the application of herbicides to control undesirable vegetation. Typical application methods are broadcast, directed spray, and hack and squirt. Broadcast application treatments are sprayed over the top of seedlings and undesirable vegetation using either aerial or backpack methods. Directed spray applications are made with a backpack and target individual plants. This method is often used to remove invasive species such as Scotch broom from young stands. Hack and squirt involves basal or stem injection of chemicals. This method is typically applied to hardwoods as a way to release conifers from hardwood competition.

Manual Release: Manual release can include cutting down of noxious weeds or hardwoods. Hardwood release is used when ingrowth of hardwoods, mainly red alder in the northwest and madrone and tanoak in the southwest, threaten to change the stand from conifer dominated to hardwood dominated. In this treatment, the majority of hardwoods are removed using chainsaws leaving all of the conifer trees. This differs from Pre-Commercial Thinning (described below) in the fact that conifer spacing and species are not manipulated. While hardwoods are important on the landscape and some are retained, long-term conifer production is the goal for many stands across the district.

## **Pre-Commercial Thinning**

Pre-commercial thinning is a silviculture activity used to manipulate the density, structure or species composition of overstocked young forest stands. Generally, the purpose of a pre-commercial thinning operation is to release the biggest and best growing trees so they can maintain their growth. Pre-commercial thinning is normally conducted in a stand between the ages of 10 and 20 years old. In areas of disease, such as Swiss needle cast or *Phellinus weirii*, pre-commercial thinning can be used to favor species other than impacted Douglas-fir trees in the residual stand.

## **Pruning**

The purpose of pruning is to remove limbs in order to create future high quality clear wood, or to reduce the potential for disease. No pruning is planned for Fiscal Year 2024.

## **Stocking Surveys**

The State Forests Unit has the responsibility of ensuring that the goals of the Forest Management Plan are met. Stocking surveys is one tool to ensure the stands are on track for the desired future condition. The surveys are done in order to check initial plantation survival at a time when the seedlings are vulnerable and there is still time to remedy problems, by using interplanting and animal damage control measures as examples. In addition, stocking surveys are conducted in order to assess free-to-grow status and to get baseline data on the stand for

future management planning, for example evaluating release treatments and pre-commercial thinning candidates.

## **Invasive Species**

Most noxious weeds or invasive plants are found along roads and have spread into plantations. The main sources for the weed introduction into the forest are vehicle tires, equipment moved into and out of district, and where soil disturbance occurs. 100% weed-free grass seed and certified weed-free straw used for mulch is required for project work on roads. Equipment washing is required in timber sale contracts to prevent the introduction of weed seed from other sites. It is also required that weed-free hay is used for feeding stock on State Forest Lands.

The State Forests Unit continues to identify appropriate steps they can take to prevent the introduction and spread of invasive plants. Knotweed, Scotch broom, English ivy and false brome are the primary species known to exist in the district. Active control measures are being planned and prioritized for roadside, in-unit, and trail treatment.

## **Roadside Vegetation Management**

The State Forests Unit manages vegetation alongside forest roads. Vegetation management protects the investment by preventing damage from unchecked vegetation growth, helps to maintain a safe driving environment by maintaining clear sight distance, controls noxious weeds, and reduces fire hazards. Roadside vegetation will be controlled manually, mechanically or chemically where necessary. The method used will depend on the characteristics of the vegetation and its location. During the spring of 2024, roadside vegetation surveys will be conducted to determine roadside treatment needs for Fiscal Year 2024. In most cases, roadside chemical applications and roadside mechanical brushing will be part of a timber sale's project work, conducted by an experienced contractor. Some roadside manual treatment will be conducted by Correctional Institution crews.

## **Recreation Management**

### **Overview of Recreation Management**

Recreation use has been taking place on the West Oregon District for more than 70 years and has been managed in varying degrees. Currently the direction for management of the Recreation program flows from the Northwest Oregon State Forest Management Plan (2010).

Recreation use includes hunting, fishing, target shooting, Off Highway Vehicle riding, mountain biking, hiking, equestrian use, mushroom picking, sight-seeing, picnicking, swimming, and camping. Recreation use takes place in developed sites and in dispersed sites across state forest land. Use levels for all activities are expected to increase.

Dispersed site activities are expected to continue in Fiscal Year 2024 and will require varying degrees of Recreation program and district staff attention. Dispersed use sites will be monitored, maintained, and improved or closed as resources allow to meet safety, sanitation, and resource protection objectives.



The Fiscal Year 2024 plan focuses on maintaining current trails, facilities, and opportunities by maintaining the existing infrastructure, provide for public safety and sanitation, and mitigate damage to natural resources.

Due to facility and trail maintenance needs, winter weather limitations, timber sale activity, fire season restrictions, and staffing vacancies some project work from Fiscal Year 2023 will extend into Fiscal Year 2024.

### **Facilities (Campgrounds, Viewpoints, Trailheads, etc.)**

The Recreation program in collaboration with the West Oregon District manages the following recreation infrastructure:

1. Big Elk Creek. This area has two dispersed campsites along Big Elk Creek that is accessible year-round. These campsites are consistently used during summer weekends and through much of the hunting seasons.
2. Baber Meadows. The Mt. Baber ATV Club uses Baber Meadows as an Off Highway Vehicle staging/riding/camping area. This staging area provides access to a 32.6 mile trail loop on ODF and private land. The facilities at Baber Meadows include a vault toilet, an informational kiosk, a kid's All Terrain Vehicle track, all weather access roads to camping and staging areas, nine surfaced trailer sites with picnic tables and fire rings, and two primitive campsites. There is also an overflow parking area to the west of the meadows. ODF pays for the pumping of the vault toilet. Salmon Creek OHV Staging Area provides an alternative access to the Mt. Baber Trail System for Off Highway Vehicle trail users. The facilities at the Salmon Creek Staging Area consist of a surfaced parking lot and an informational kiosk.
3. Black Rock. The Black Rock Mountain Bike Association has created and maintains about 7.3 miles of trails in the eastern portion of ODF ownership at Black Rock. Facilities at Black Rock include a small parking area with portable toilet and changing station, a staging area/gathering area and two information kiosks.
4. Yaquina Falls. The falls receive frequent visits on undesignated trails.

All recreation infrastructure will be operated and maintained in good working order and will be kept clean and safe for public use. They will be managed to minimize user conflict and to avoid adversely impacting the resource.

These recreation activities will be managed and maintained consistent with past practices and in collaboration with our partners. Recreation planning and management are covered in the 2012 Implementation Plan in detail.

Fiscal Year 2024 Facility projects on the West Oregon District are identified and described in the following table (Table 6).

**Table 6. Developed and Dispersed Facility Projects**

Project Type	Project Name	Project Status	Work Resources	Project Description
Planning	Mt. Baber Off Highway Vehicle Staging Area Site Sign Replacement	Ongoing- Approved in Fiscal Year 2023	Recreation Staff	Develop standard design of MT. Baber OHV Staging Area site sign consistent with state forest branding.
Planning	Salmon Creek OHV Staging Area Site Sign Replacement	Ongoing- Approved in Fiscal Year 2023	Recreation Staff	Develop standard design of Salmon Creek Off Highway Vehicle site sign consistent with state forest branding.
Planning	Black Rock Trailhead	Ongoing- Approved in Fiscal Year 2023	Volunteers, Recreation Staff, District Staff, Design Contractor	Development of trailhead design including construction drawings and cost estimates.

**Motorized (Off Highway Vehicle) Trails**

The Mt. Baber ATV Club and The Recreation Program will continue to place emphasis on trail system planning, maintenance, and upgrade of existing trails. Project work will continue to focus on upgrading and improving the designated Off Highway Vehicle trail network in an effort to better connect the trail system, protect forest resources, minimize conflict with other forest management activities, re-establish trails after timber harvest, move trail users off the mainline haul and public use roads, reduce trail congestion and the potential for conflict between trail users, improve user safety, improve maintenance efficiency, and reduce infrastructure investments and maintenance workload.

To support Off Highway Vehicle program management, ODF receives All-Terrain Vehicle Fund dollars from Oregon Parks and Recreation Department to support personnel and associated service and supply costs.

**Non-Motorized Trails**

The Black Rock Mountain Bike Association and the Recreation Program will continue to place emphasis on trail system planning, maintenance, and upgrade of existing trails. Focus will continue to be on improving trail system connectivity and diversity, reducing user conflict, addressing user safety, protecting resources and investment, improving sustainability, and reducing maintenance need.

Fiscal Year 2024 non-motorized trail projects on the West Oregon District are identified and described in the following table (Table 8).

**Table 8. Non-Motorized Trail Projects**

Project Type	Project Name	Project Status	Work Resources	Project Description
Trail Re-route	Black Rock Trail Re-route and Upgrade Project	Ongoing- Approved in Fiscal Year 2023	Black Rock Mountain Bike Association Volunteers, Recreation Staff and District Staff	Construction of trail re-routes and vacation of trail sections. Complete 1 mile of trail re-route in Fiscal Year 2024.
Planning	Black Rock Mountain Bike Area Trail Bridge	Ongoing- Approved in Fiscal Year 2023	Black Rock Mountain Bike Association Volunteers, Recreation Staff, State Forest Resource Specialists, Design Contractor	Planning and design and fundraising of the Black Rock Trail Bridge across the Little Luckiamute River. Trail Bridge will connect the new trailhead site to the trail system.
Planning	Trail Inventory and Assessment	Fiscal Year 2024	Recreation Staff	Inventory and assessment of non-motorized trails in the West Oregon District.

**Trail Maintenance (Off Highway Vehicle and Non-motorized)**

Maintenance of existing trails remains the recreation program’s highest trail program priority. Trails will be maintained as necessary to protect investment, address developing resource and safety issues, and to protect water quality.

Maintenance needs vary year to year based on factors such as volume of use and seasonal weather conditions. The recreation program has a goal of performing maintenance on all of the trail system annually to meet our trail management objectives.

Trail maintenance activity includes the completion of trail condition inspections on all trails, development of maintenance plans, prioritization of maintenance need and completion of maintenance work identified. Standard trail maintenance work may include cleaning water bars and rolling dips, cleaning out culverts, trail tread work, clearing downed trees, brushing, sign maintenance, and trail infrastructure repair.

Heavy trail maintenance work which results from winter storms includes repairing trail bridges, re-establishing trail tread in slide or washout areas, rebuilding stream ford crossings, clearing and logout work associated with heavy concentrations of downed trees, and rerouting trails due to slides, washouts, or safety issues. Heavy trail maintenance work will be incorporated into trail maintenance plans and conducted as needed.

Trail condition inspections will be conducted on all trail miles on the West Oregon District (2.3 miles of Off Highway Vehicle trails and 7.3 miles of non-motorized trails). Standard trail maintenance work is planned to be completed on all 2.3 miles of Off Highway Vehicle trail and 7.3 miles of non-motorized trail on the West Oregon District in Fiscal Year 2024.

## **Volunteer Program and Partnerships**

Volunteers contribute labor, supplies, and expertise to the Recreation, Education, and Interpretation Program. Volunteers have partnered with ODF to construct new trails, maintain infrastructure, and preserve natural resources.

Volunteer activities on the West Oregon District are focused on the Mt. Baber Off Highway Vehicle Area and the Black Rock Mountain Bike Area and are organized and managed by the two organizations (Mt. Baber ATV Club and Black Rock Mountain Bike Association) through cooperative adopt-a-trail agreements.

## **Event Management**

The Mt. Baber ATV Club holds 2-3 organized club riding events annually.

The Black Rock Mountain Bike Association may have some organized riding events along with regularly scheduled “work party” events.

## **Grants**

Grant Research – ODF and Black Rock Mountain Bike Association will research grant and funding opportunities to support trail system improvement work and design and construction phases of the Black Rock Mountain Bike Area Trailhead Project and the Black Rock Trail Bridge Project.

## **Other Integrated Forest Management Projects**

### **Aquatic & Riparian Management**

All fish bearing streams found in State Forests are subject to the Management Standards for Aquatic and Riparian Areas as outlined in Appendix J found in the Northwest Oregon State Forests Management Plan (2010). An objective of State Forests' aquatic resources is to maintain, enhance, and restore quality fish habitat. This is achieved primarily through riparian buffer strategies specific to the aquatic resource characteristics such as presence of fish, size, and flow duration. The goal of all riparian management prescriptions is to obtain mature forest conditions (e.g., development of the natural community appropriate for that site) as expediently as possible. Aquatic Anchors have been established on watersheds in the district in which additional aquatic conservation measures are applied when regeneration harvesting.

Several strategies, described in the Forest Management Plan, dictate protection measures designed to protect, maintain, and restore aquatic and riparian functions. These strategies are employed during harvest activities and include but are not limited to: leave trees adjacent to streams to protect stream temperature, provide nutrients, protect stream banks, and eventually provide wood to improve fish habitat. Best management practices for road construction, reconstruction, and maintenance minimize impacts to water quality.

In addition to the strategies detailed in the Forest Management Plan, all goals and strategies identified within the Draft Habitat Conservation Plan will be followed for Fiscal Year 2024 timber sales. These goals and strategies at times will overlap with those within the Forest

Management Plan. Final stream protection configurations will be determined during sale layout to ensure compliance with Forest Management Plan and Habitat Conservation Plan strategies.

Threatened and Endangered Fish Species: Federally Threatened Salmon and Steelhead listed species with Critical Habitat Designations found within the district include Upper Willamette Winter Steelhead and Coastal Coho Salmon.

Fish Distribution Surveys: Streams are classified in part as supporting fish (Type F) or not supporting fish (Type N). Riparian protection measures depend in part on the presence of fish. Many streams in the past have been surveyed with electro-fishing techniques that established the upper extent of fish use. However, many small streams have not yet been surveyed for fish presence. Streams needing classification in the annual operations plan will be evaluated with a Physical Habitat Survey. The physical methodology was developed in conjunction with the Oregon Department of Fish and Wildlife. The seasonal/perennial break in stream flow will also be evaluated prior to sale layout.

Restoration Goals and Identification Process: The overarching principles for fish habitat restoration are described in the Forest Management Plan. An initial screen by ODF's Aquatic and Riparian Specialist suggests that there may be opportunities for stream enhancement in some of the planned sale areas. Further field reconnaissance will be completed by District and Division Staff, along with ODFW, to determine possible locations.

Potential Stream Projects may be associated with the following Timber Sales:

- Salmon Forks Combo
- All Terrain (Alternate sale)

Restoration accomplishments are reported to Oregon Watershed Enhancement Board using the Oregon Watershed Restoration Inventory electronic filing process and reported by ODF annually in our report to the counties, board of forestry, and Division of State Lands.

## **Land Exchange**

There are currently no land exchanges planned. The district's "Land Acquisition and Exchange Plan" was updated in Fiscal Year 2013.

## **Law Enforcement and Public Safety**

The District expects to contribute \$7,500 total during Fiscal Year 2024 to help fund one forest deputy in each of the following counties: Lincoln, Benton and Polk. Other agencies and private forest landowners also contribute to the funding of these law enforcement officers.

The forest deputies patrol forest lands in their respective counties to enforce laws relating to fire and recreation; prevent vandalism, theft of forest products and dumping of trash; and aid in search and rescue efforts. The forest deputies are essential to the success and overall management of the forest and their presence benefits all forest users.

## **Firewood Cutting Program**

The primary objective of the District Firewood Cutting Program is to provide a source of firewood from State Forests to the public for personal use. The permit fee for personal firewood cutting is \$20 for two cords. Permits are issued for a period of two weeks. Historically personal use firewood cutting has only been allowed outside the months of fire season. The district

typically sells 50-100 woodcutting permits each year. In addition, the district issues between 3 to 10 commercial firewood permits per year with an estimated revenue of \$500 to \$1,000.

## **Non-Timber Forest Products**

The district typically issues between 30 and 50 miscellaneous forest product permits for salal, vine maple, forest plants, chanterelle mushrooms and Oregon grape each fiscal year. Permits are sold for \$100 per permittee and may have more than one permittee per permit. Revenue from these permits ranges from \$7,000 to \$10,000 per fiscal year.

## **Planning**

Below are the significant district-level planning projects currently scheduled for commencement, completion, or both in Fiscal Year 2024.

### **Archaeological, Historical and Cultural Resources**

All of the operations have been reviewed against the State Historic Preservation Office and General Land Office databases for potential impact to cultural resources. All of the operations have been shared with the nine federally recognized Tribes in Oregon.

The following timber sales were identified to have potential cultural or historic within or in proximity to the timber sale. During sale layout or administration, if foresters find any potential evidence of cultural or historic items, inadvertent discovery policies will be followed.

- Old Highway (Alternate sale)

### **Forest Inventory**

The State Forests Division is developing a lidar-based inventory that will replace Stand Level Inventory when completed. Lidar data was collected in 2020 for most ODF lands. Contract crews collected United States Forest Service Forest Inventory Assessment plots in 2021. The State Forest Division's Inventory Program is in the process of developing a raster-based estimate of forest biometrics across most of its ownership.

### **Wildlife Surveys**

#### Northern Spotted Owl Surveys

For the Fiscal Year 2024 Annual Operations Plan, the district will continue the northern spotted owl survey program, in order to comply with federal and state Endangered Species Acts and to contribute to Forest Management Plan goals. Survey requirements are determined in accordance with *ODF Northern Spotted Owl Operational Policies*, November 2017. If ODF obtains a Habitat Conservation Plan these policies will be re-evaluated.

#### Marbled Murrelet Surveys

In Fiscal Year 2024, the district will continue its marbled murrelet survey program in order to comply with Federal and State Endangered Species Acts and to contribute to Forest Management Plan goals. Survey requirements are determined in accordance with ODF policy,

guidance, and survey protocols. If ODF obtains a Habitat Conservation Plan these policies will be re-evaluated.

### Threatened & Endangered Plants

The district will continue to screen harvest operations against the Oregon Biodiversity Information Center database and other known locations on the district to identify potential conflicts with plant species listed in the District Implementation Plan.

### Species of Concern Wildlife

The district will continue to screen harvest operations against several wildlife databases to identify potential conflicts with wildlife of concern listed in the District Implementation Plan.

## **Research and Monitoring**

The West Oregon District will assist in a variety of research and monitoring projects in Fiscal Year 2024. Examples include:

- Growing stock study of thinned stands at Black Rock (McGuire/Oregon State University)
- Watershed Monitoring Study (Coble/National Council for Air and Stream Improvement)
- Red Tree Vole Study (National Council for Air and Stream Improvement)
- Tree progeny study (NW Tree Improvement Cooperative)
- Nursery Seedling Stock trials (West Oregon District).

## **Recreation, Education, and Interpretation Program Planning – Program Wide**

In Fiscal Year 2024, Recreation, Education, and Interpretation program staff will be working on the following planning efforts.

- Support the State Forest Division's Forest Management Plan work, Habitat Conservation Plan work and district annual operations plan development and implementation.
- Recreation Standards Manual Development- Recreation, Education, and Interpretation program staff will work with a consultant to develop a recreation program standards manual for recreation facility infrastructure (ex. fire pits, information boards, picnic tables, site signs...etc.) This project began in Fiscal Year 2023 and will continue in Fiscal Year 2024.
- Volunteer Program Manual- The Recreation, Education, and Interpretation program is undergoing an extensive re-evaluation of the volunteer program including onboarding, communication, and recruitment components. The deliverable of this process will be development of a volunteer manual that will be applied across all forests and programs. This project began in Fiscal Year 2023 and will continue in Fiscal Year 2024.

## **Other Planning Operations**

The district will continue collecting additional data to enhance road inventory information and rock inventories as workload permits. In conjunction with the Recreation, Education, and Interpretation Team, the District will provide input and context to recreation planning. The district will also continue to participate in Forest Management Plan and Habitat Conservation Plan reviews as needed.

## **Public Information and Education**

### **Forestry Education**

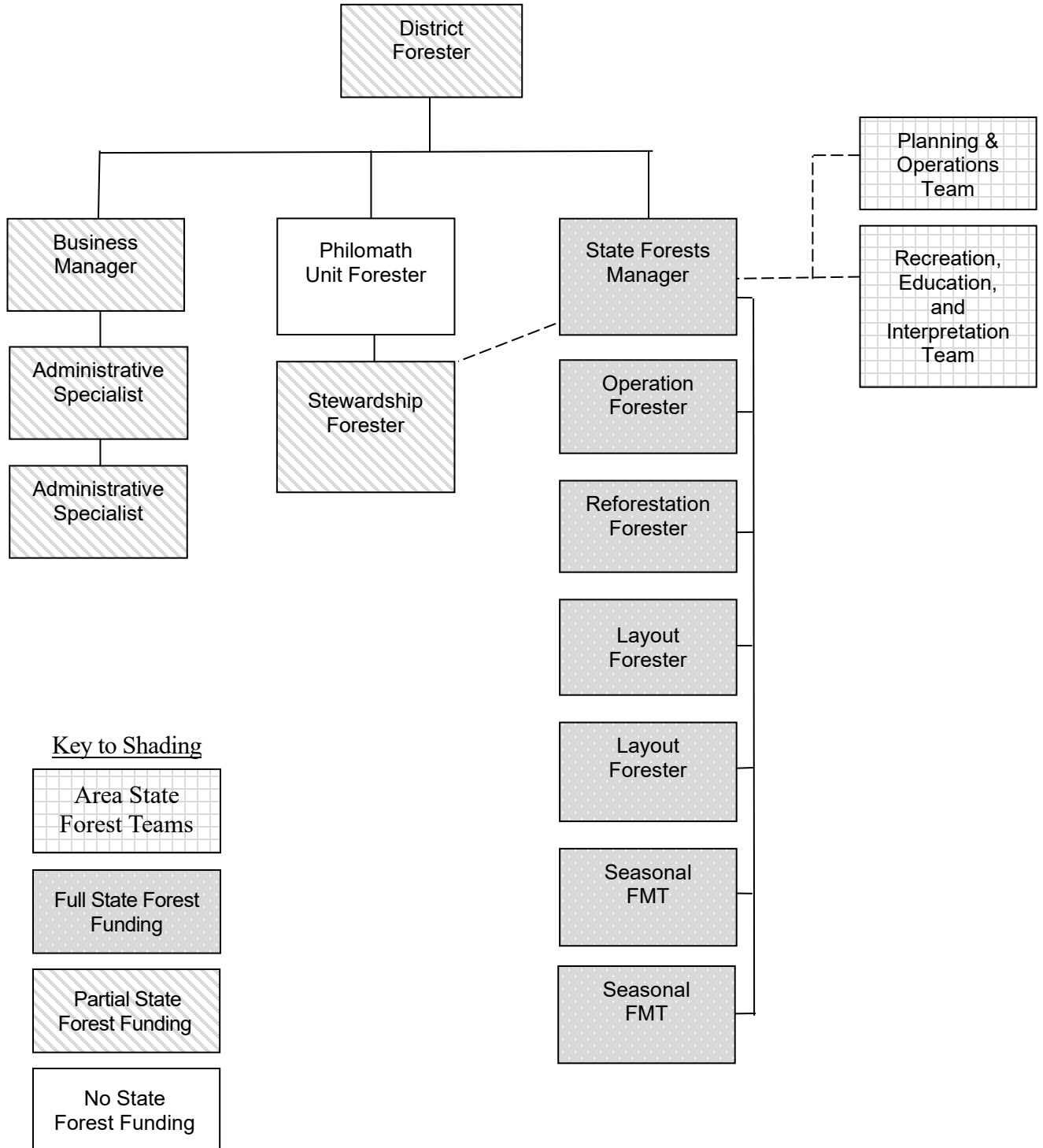
The district maintains supporting information on the Implementation Plan, Forest Land Management Classification System, and Annual Operations Plans for public review. In addition, District personnel will attempt to participate in outdoor school presentations, Oregon State University College of Forestry class presentations, high school career fairs, sponsorship of local high school senior internships, All Terrain Vehicle club meetings, and other public events as the opportunity arises and time permits. The district will continue to meet with concerned citizens or groups when they have questions or as needed. Staffing and workload limitations will be a factor in staff availability for participation in these activities.

## **Administration**

There are 12 positions on the district that are fully or partially funded for the management of State Forest land: 5 permanent personnel who work full-time on state forest management, 5 permanent personnel who work part-time on state forest management, and 2 seasonal personnel who work winter/spring on state lands. In addition, the district is supported by the NW Oregon Area Recreation, Education, and Interpretation Team, and the NW Oregon Area Operations Team as well as the Division Planning and Coordination Team. All are responsible for implementing the 2024 Annual Operations Plan. The State Forest Unit is responsible for ensuring that all management approaches, activities and projects for timber marketing, road management, recreation and young stand management are designed to meet the goals, strategies and objectives of the Forest Management Plan, Implementation Plan, annual operations plans, and Recreation Plan. The sales and projects are coordinated across the district and with the NW Oregon Area and Division Teams from the development of the annual operations plan to the final sale administration for consistency within and between units to meet common goals.



## West Oregon District Organization Chart



# **APPENDICES**

## **A. Summary Tables**

1. Harvest Operations – Financial Summary
2. Harvest Operations – Forest Resource Summary
3. Forest Road Management Summary
4. Reforestation and Young Stand Management Summary
5. Recreation Site Management Summary

## **B. Vicinity Map**

1. Harvest Operations Vicinity Map

## **C. Consultations with Other State Agencies**

This appendix summarizes the results of consultations with the Oregon Department of Fish and Wildlife, and other agencies as appropriate.

## **D. Public Comment Process**

This appendix will describe the results of the public involvement process of this annual operations plan.

## **E. Pre-Operations Reports**

Pre-Operations Reports are available from the district upon request.

## **F. Forest Land Management Classification**

## **G. Landscape Design**

## **Appendix A – Summary Tables**

- **Table A-1: Commercial Forest Management Operations - Financial Summary**
- **Table A-2: Commercial Forest Management Operations – Forest Resource Summary**
- **Table A-3: Forest Roads Summary**
- **Table A-4: Reforestation and Young Stand Management Summary**
- **Table A-5: Recreation Site Management – Financial Summary**
- **Table A-6: Recreation Trail Management – Financial Summary**

## TIMBER HARVEST OPERATIONS - FINANCIAL SUMMARY

District: West Oregon

Fiscal Year: 2024

Date: 06/30/2023

Primary Operation	Fund %			Sale Quarter	Net Acres		Volume (MMBF)			Value			
	BOF	CSL			Partial Cut	Clear-cut	Conifer	Hard-woods	Total	Gross	Projects	Net	
Wolf of Haul Street	100%	0%	Lincoln	1	0	63	1.5	0.4	1.9	\$756,000	\$53,441	\$702,559	
Bark Beetle Bailey	100%	0%	Polk 5%/Benton 95%	2	0	75	1.8	1.0	2.8	\$1,242,450	\$113,378	\$1,129,072	
Salmon Forks Combo	91%	9%	Lincoln	2	66	61	1.9	0.0	1.9	\$652,750	\$66,142	\$586,608	
Lone Steere Thin	0%	100%	Polk 43%/Lincoln 57%	3	64	0	0.4	0.0	0.4	\$112,000	\$30,536	\$81,464	
Thin Bear	100%	0%	Lincoln	3	122	1	0.7	0.0	0.7	\$151,600	\$30,756	\$120,844	
Proud Mary	100%	0%	Benton	4	0	50	1.8	0.0	1.8	\$821,250	\$42,173	\$779,077	
<b>Sub-total:</b>						252	250	8.1	1.4	9.6	\$3,736,050	\$336,426	\$3,399,624
<b>Project WOC Sub-total:</b>						0	0	0.0	0.0	0.0	\$0	\$0	\$0
<b>Total:</b>						252	250	8.1	1.4	9.6	\$3,736,050	\$336,426	\$3,399,624

Alternate Operation	Fund %		County	Sale Quarter	Net Acres		Volume (MMBF)			Value			
	BOF	CSL			Partial Cut	Clear-cut	Con-ifer	Hard-woods	Total	Gross	Projects	Net	
Bon Voyage	100%	0%	Benton	Alt	0	79	2.5	0.0	2.5	\$1,137,600	\$52,686	\$1,084,914	
Old Highway	100%	0%	Lincoln	Alt	0	50	2.1	0.0	2.1	\$1,025,000	\$46,952	\$978,048	
Millers Woods Thin	93%	7%	Lincoln	Alt	152	0	1.1	0.0	1.1	\$317,100	\$41,465	\$275,635	
All Terrain	52%	48%	Lincoln	Alt	0	43	1.5	0.1	1.7	\$908,050	\$50,718	\$857,332	
Double Exposure	100%	0%	Lincoln	Alt	0	58	2.3	0.0	2.3	\$1,160,000	\$41,412	\$1,118,588	
<b>Total:</b>						152	230	9.5	0.1	9.6	\$4,547,750	\$233,233	\$4,314,517

**PRIMARY HARVEST OPERATIONS - FOREST RESOURCE SUMMARY**

District: West Oregon

Fiscal Year 2024

Date: 06/30/2023

This table lists Forest Resources and other issues addressed within Pre-Operations Report due to their presence within or near harvest operations

Primary Harvest Operations	Unit (Optional)	Forest Health Issues <sup>1</sup>	Invasive Species	LYR/OFS Structures <sup>2</sup>	Landcape Design LYR/OFS <sup>3</sup>	Install/Replace Culverts on Fish Bearing / Perennial Streams	Harvesting within 100' of Fish Bearing Stream	Domestic Water Source	Potential Stream Habitat Improvement <sup>4</sup>	Within Aquatic Anchor	Within Terrestrial Anchor	Operating within a NSO Provincial Circle (BA Required)	Operating within a MMMA (BA Required)	Murrelet Timber Sale Screening Process Required (MM Policy 2.27)	T&E Fish Adjacent to Harvest Unit / Haul Route <sup>5</sup>	T&E Plants	Geotechnical Issues Needing Field Review	Recreation Sites	Cultural Resources	Scenic Resources	Other Resources or Issues
Wolf of Haulstreet		X	-	-	-	-	-	-	-	X	-	-	-	-	X	-	-	-	-	-	
Bark Beetle Bailey		X	-	X	-	-	-	-	-	X	-	X	-	X	X	-	-	-	-	-	
Salmon Forks Combo		X	-	-	-	-	-	-	X	-	-	-	-	-	-	-	-	X	-	-	
Lone Steere Thin		-	-	-	-	-	-	-	-	X	-	-	-	-	X	-	-	-	-	-	
Thin Bear		X	-	-	-	-	-	-	-	-	-	-	-	X	-	-	-	X	-	-	
Proud Mary		-	-	X	-	-	-	-	-	-	-	X	-	-	-	-	-	-	-	-	

<sup>1</sup> A 'x' (in any column) indicates yes the resource or other issue occurs within or near the harvest operation and is addressed by the Pre-Operations Report

<sup>2</sup> A 'x' indicates the harvest operation contains stands that are currently in a Layered or Older Forest Stand Structure

<sup>3</sup> A 'x' indicates that the operation contains areas that have been designated for the development of complex forest stands (LYR/OFS)

<sup>4</sup> The final decision on these projects will occur during sale preparation and inconsultation with ODFW.

<sup>5</sup> This table lists harvest operations (units or log haul routes) that are adjacent to streams that are known to contain T&E fish.

**ALTERNATE HARVEST OPERATIONS - FOREST RESOURCE SUMMARY**

This table lists Forest Resources and other issues addressed within Pre-Operations Report due to their presence within or near harvest operations

Alternate Harvest Operations	Unit (Optional)	Forest Health Issues <sup>1</sup>	Invasive Species	LYR/OFS Structures <sup>2</sup>	Landcape Design LYR/OFS <sup>3</sup>	Install/Replace Culverts on Fish Bearing / Perennial Streams	Harvesting within 100' of Fish Bearing Stream	Domestic Water Source	Potential Stream Habitat Improvement <sup>4</sup>	Within Aquatic Anchor	Within Terrestrial Anchor	Operating within a NSO Provincial Circle	Operating within a MMMA (BA Required)	Murrelet Timber Sale Screening Process Required (MM Policy 2.27)	T&E Fish Adjacent to Harvest Unit / Haul Route <sup>5</sup>	T&E Plants	Geotechnical Issues Needing Field Review	Recreation Sites	Cultural Resources	Scenic Resources	Other Resources or Issues
Bon Voyage		X	-	-	-	-	-	-	-	-	-	-	-	-	-	-	*	-	-	-	A buried fiber optic line runs along Filched Gate Road
Old Highway		X	-	-	-	X	-	-	-	-	-	-	-	-	-	-	*	-	X	X	BPA transmission line between units 1 & 2.
Millers Woods Thin		-	-	-	-	-	-	-	-	-	-	-	-	X	X	-	-	-	-	X	
All Terrain		X	-	X	-	-	-	-	X	-	-	-	-	-	X	-	X	-	-	-	A buried fiber optic line runs along Deer Creek Road
Double Exposure		-	-	-	-	-	-	X	-	-	-	-	-	-	-	-	*	-	-	-	

<sup>1</sup> A 'x' (in any column) indicates yes the resource or other issue occurs within or near the harvest operation and is addressed by the Pre-Operations Report

<sup>2</sup> A 'x' indicates the harvest operation contains stands that are currently in a Layered or Older Forest Stand Structure

<sup>3</sup> A 'x' indicate that the operation contains areas that have been designated for the development of complex forest stands (LYR/OFS)

<sup>4</sup> The final decision on these projects will occur during sale preparation and inconsultation with ODFW.

<sup>5</sup> This table lists harvest operations (units or log haul routes) that are adjacent to streams that are known to contain T&E fish.

<sup>6</sup> An \* indicates further Geotechnical review will be conducted prior to sale layout

## FOREST ROADS SUMMARY

District: West Oregon

Fiscal Year: 2024

Date: 06/30/2023

Primary Operations	Construction		Improvement		Other Projects	Total Project Costs	Gross Value of Operation	Total Cost as a percent of Gross Value	Comments
	Miles	Cost	Miles	Cost					
Wolf of Haul Street	0.0	\$0	1.0	\$23,983	\$29,458	\$53,441	\$756,000	7.1%	
Bark Beetle Bailey	0.4	\$52,230	2.8	\$31,683	\$29,465	\$113,378	\$1,242,450	9.1%	
Salmon Forks Combo	0.4	\$16,910	3.0	\$19,484	\$29,748	\$66,142	\$652,750	10.1%	
Lone Steere Thin	0.1	\$0	0.2	\$779	\$29,757	\$30,536	\$112,000	27.3%	
Thin Bear	0.1	\$2,413	0.5	\$2,813	\$25,530	\$30,756	\$151,600	20.3%	
Proud Mary	0.0	\$0	3.2	\$17,286	\$24,887	\$42,173	\$821,250	5.1%	
<b>Sub-total</b>	<b>1.0</b>	<b>\$71,553</b>	<b>10.7</b>	<b>\$96,028</b>	<b>\$168,845</b>	<b>\$336,426</b>	<b>\$3,736,050</b>	<b>9.0%</b>	
<b>Sub-total WOC (see below)</b>	<b>0.0</b>	<b>\$0</b>	<b>0.0</b>	<b>\$0</b>	<b>\$0</b>		<b>\$0</b>		
<b>Totals</b>	<b>1.0</b>	<b>\$71,553</b>	<b>10.7</b>	<b>\$96,028</b>	<b>\$168,845</b>	<b>\$336,426</b>	<b>\$3,736,050</b>	<b>9.0%</b>	

### Alternate Operations

Bon Voyage	0.1	\$1,703	2.7	\$6,865	\$44,118	\$52,686	\$1,137,600	4.6%	
Old Highway	0.0	\$0	4.5	\$23,756	\$23,196	\$46,952	\$1,025,000	4.6%	
Millers Woods Thin	0.1	\$2,171	2.5	\$14,069	\$25,225	\$41,465	\$317,100	13.1%	
All Terrain	0.0	\$0	3.5	\$24,357	\$26,361	\$50,718	\$908,050	5.6%	
Double Exposure	0.0	\$0	1.8	\$14,677	\$26,735	\$41,412	\$1,160,000	3.6%	
<b>Total</b>	<b>0.2</b>	<b>\$3,874</b>	<b>15.0</b>	<b>\$83,724</b>	<b>\$145,635</b>	<b>\$233,233</b>	<b>\$4,547,750</b>	<b>5.1%</b>	

Road Projects Not Associated with Harvest Operations in this AOP: None

### Road Projects to be Completed as a Work Order Contract

Operation	Construction		Improvement		Other Projects	Total Project Costs	Funding Source	Comments
	Miles	Cost	Miles	Cost				
<b>Total</b>	<b>0.00</b>	<b>\$0</b>	<b>0.00</b>	<b>\$0</b>	<b>\$0</b>	<b>\$0</b>		

## REFORESTATION AND YOUNG STAND MANAGEMENT SUMMARY

District: West Oregon

Fiscal Year: 2024

Date: 06/30/2023

Projects Conducted by ODF Staff or Contractors	Board of Forestry			Common School Forest Lands			District	
	Acres Planned	Average Cost/Acre	BOF Cost	Acres Planned	Average Cost/Acre	CSL Cost	Total Acres	Total Cost
Site Prep - Broadcast Burning	0	\$0.00	\$0	0	\$0.00	\$0	0	\$0
Site Prep - Piling Burning *	14	\$40.17	\$562	21	\$40.17	\$844	35	\$1,406
Site Prep - Mechanical (conducted through TS Contract)	8	\$0.00	\$0	6	\$0.00	\$0	14	\$0
Site Prep - Chemical - Aerial	0	\$100.00	\$0	0	\$100.00	\$0	0	\$0
Site Prep - Chemical - Ground **	151	\$122.16	\$18,446	36	\$122.16	\$4,398	187	\$22,844
Initial Planting	193	\$185.00	\$35,705	104	\$185.00	\$19,240	297	\$54,945
Interplanting	40	\$175.00	\$7,000	10	\$175.00	\$1,750	50	\$8,750
Underplanting	0	\$175.00	\$0	0	\$175.00	\$0	0	\$0
Tree Protection - Barriers (bud caps)	0	\$87.00	\$0	0	\$87.00	\$0	0	\$0
Tree Protection - Direct Control	0	\$75.00	\$0	0	\$75.00	\$0	0	\$0
Release - Chemical - Aerial	0	\$130.00	\$0	0	\$130.00	\$0	0	\$0
Release - Chemical - Ground	276	\$132.88	\$36,675	88	\$132.88	\$11,693	364	\$48,368
Release - Manual	100	\$135.00	\$13,500	20	\$135.00	\$2,700	120	\$16,200
Precommercial Thinning	210	\$187.00	\$39,270	15	\$187.00	\$2,805	225	\$42,075
Pruning	0	\$0.00	\$0	0	\$0.00	\$0	0	\$0
Stocking Surveys *	1,500	\$0.00	\$0	250	\$0.00	\$0	1,750	\$0
Invasive Species	100	\$116.00	\$11,600	25	\$116.00	\$2,900	125	\$14,500
Roadside Vegetation Mngt	200	\$72.28	\$14,456	50	\$72.28	\$3,614	250	\$18,070
Other			\$0			\$0	0	\$0
<b>Totals</b>	<b>2,792</b>	<b>--</b>	<b>\$177,214</b>	<b>625</b>	<b>--</b>	<b>\$49,944</b>	<b>3,417</b>	<b>\$227,158</b>

\* Work to be completed by ODF staff; cost are for materials only

\*\* Included 9 acres into BOF planned acres of Admin owned land that will be treated, but costs reimbursed

Projects Conducted by South Fork/Mill Creek Crews (costs are for materials only)	Board of Forestry			Common School Forest Lands			District	
	Acres Planned	Average Cost/Acre	BOF Cost	Acres Planned	Average Cost/Acre	CSL Cost	Total Acres	Total Cost
Site Prep - Broadcast Burning	0	\$0.00	\$0	0	\$0.00	\$0	0	\$0
Site Prep - Piling Burning	0	\$0.00	\$0	0	\$0.00	\$0	0	\$0
Site Prep - Mechanical	0	\$0.00	\$0	0	\$0.00	\$0	0	\$0
Initial Planting	0	\$0.00	\$0	0	\$0.00	\$0	0	\$0
Interplanting	20	\$0.00	\$0	5	\$0.00	\$0	25	\$0
Underplanting	0	\$0.00	\$0	0	\$0.00	\$0	0	\$0
Tree Protection - Barriers (tubing & tube maintenance)	22	\$48.09	\$1,058	47	\$48.09	\$2,260	69	\$3,318
Tree Protection - Direct Control	20	\$0.00	\$0	10	\$0.00	\$0	30	\$0
Release - Manual	10	\$0.00	\$0	70	\$0.00	\$0	80	\$0
Precommercial Thinning	54	\$0.00	\$0	3	\$0.00	\$0	57	\$0
Pruning	0	\$0.00	\$0	0	\$0.00	\$0	0	\$0
Invasive Species	0	\$0.00	\$0	0	\$0.00	\$0	0	\$0
Other *	15	\$0.00	\$0	5	\$0.00	\$0	20	\$0
<b>Totals</b>	<b>141</b>	<b>--</b>	<b>\$1,058</b>	<b>140</b>	<b>--</b>	<b>\$2,260</b>	<b>281</b>	<b>\$3,318</b>

\* Roadside Brushing

Grant Funded Activities	Board of Forestry			Common School Forest Lands			District		Funding
Project	Acres Planned	Average Cost*/Acre	Cost	Acres Planned	Average Cost*/Acre	Cost	Total Acres	Total Cost	
			\$0.00			\$0.00	0	\$0.00	



**RECREATION SITE MANAGEMENT SUMMARY**

**District:** West Oregon

**Fiscal Year:** 2024

**Date :** 06/30/2023

Project	ODF (\$)	Other (\$)	Total Costs	Comments
None			\$0	
		FDF Total	\$0	
		Other Total	\$0	
		<b>TOTAL</b>	<b>\$0</b>	

**RECREATION TRAIL MANAGEMENT SUMMARY**

District: West Oregon

Fiscal Year: 2024

Date : 06/30/2023

Project	Construction Projects			Maintenance			Total Costs**	Comments
	Miles	ODF (\$)	Other (\$)	Miles	ODF (\$)	Other (\$)		
<b>Non-Motorized</b>								
Black Rock Trail Re-route and Upgrade Project	1.0						\$0	Construction of trail re-routes and vacation of trail sections. Complete 1 mile of trail re-route in FY24. Construction and vacation done by BRMBA.
Trail Maintenance				7.3			\$0	Maintenance done by BRMBA
<b>Motorized</b>								
Trail Maintenance				2.3			\$0	Maintenance done by Mt. Baber ATV Club
							\$0	FDF Total
							\$0	Other Total
							<b>\$0</b>	<b>TOTAL</b>

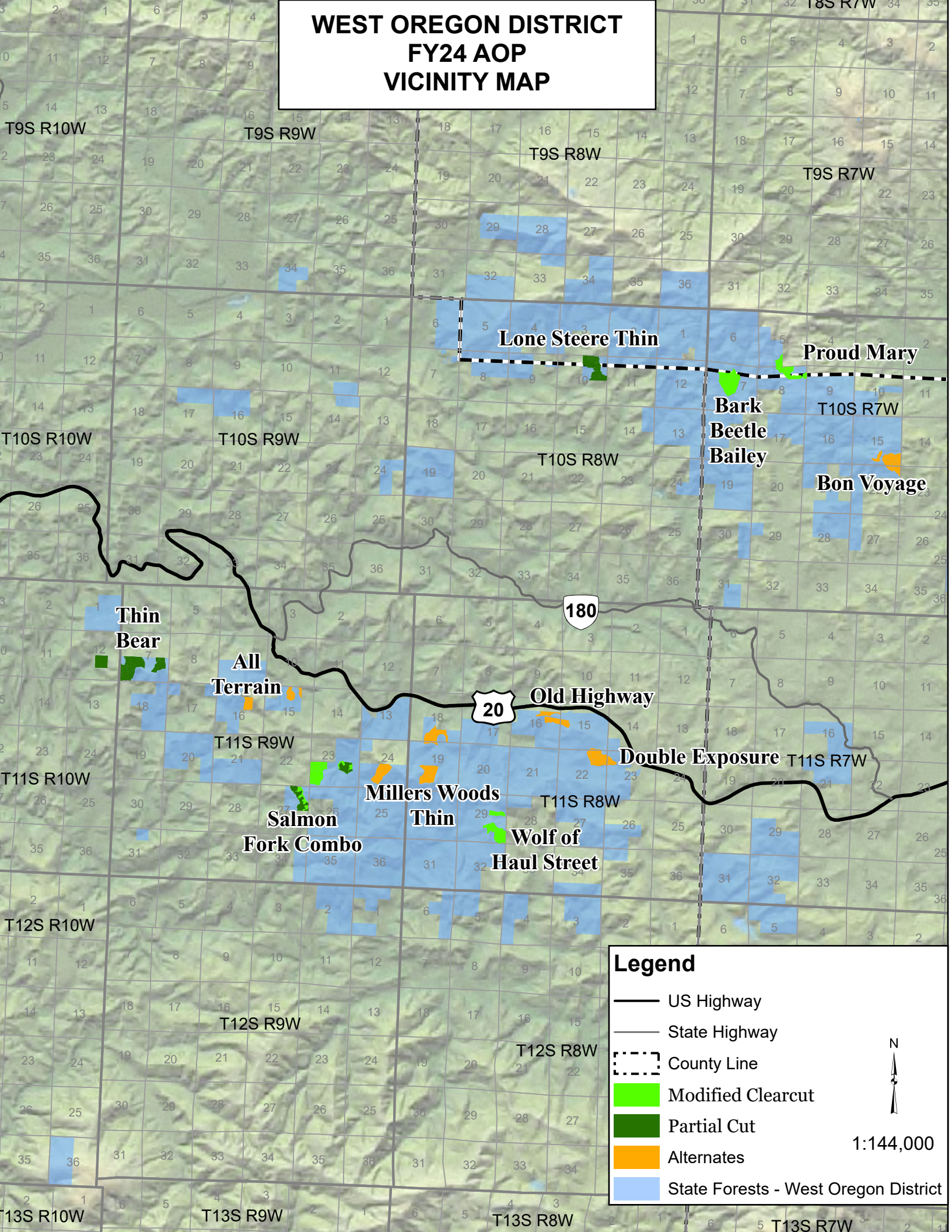
\*A portion of the motorized recreation costs are funded through OPRD ATV funds.

\*\*Labor cost not reflected in totals








## **Appendix B – Vicinity Map**

- **Harvest Operations Vicinity Map**

# WEST OREGON DISTRICT FY24 AOP VICINITY MAP



## Legend

-  US Highway
-  State Highway
-  County Line
-  Modified Clearcut
-  Partial Cut
-  Alternates
-  State Forests - West Oregon District



1:144,000

## **Appendix C – Consultations with Other State Agencies**

### **Oregon Department of Fish and Wildlife (ODFW):**

ODFW biologists were provided Pre-Operation Reports and maps to review and attended a Fiscal Year 2024 AOP review meeting for resource specialists in March 2023. The following are comments received (*in bold & italics with some paraphrasing*) and the response from ODF.

***Please let ODFW know when vacating roads as they have forage seed available to spread at the site. ODFW is looking to seed for pollinators in the future.***

Operations Coordinators at each district will coordinate with ODFW when vacating roads to obtain and spread seed mix.

***ODFW would like to see new meadows of four to ten acres in size created. They have seed for new meadows and volunteer time to keep them mown.***

Opportunities for new meadow sites will be reviewed during the Implementation Plan development as part of the new Forest Management Plan ODF is currently developing.

***Is there opportunity in stream buffers to create openings and plant willow on flat areas?***

The Riparian Conservation Areas within the Habitat Conservation Plan are no harvest areas. However, if an opening were to be created naturally by wind, fire, disease or other event, willow could be considered for planting within appropriate sites.

***Can surplus logs left on landings be moved elsewhere to place in a stream for enhancement?***

This is a possibility depending upon logistics, survey needs and cost of moving logs to the proposed site.

## **Appendix D – Public Comment Process**

The Oregon Department of Forestry issued a Press Release in April 2023, announcing a formal 45-day public comment period for the Fiscal Year 2024 Annual Operations Plans from March 17th, 2023, through May 31st, 2023.

The purpose of the Public Comment Period is to provide an opportunity for the public to review the annual operations plans, ask questions, make recommendations, and offer comments. As a public agency, ODF strives to operate in the best interest of Oregonians. We provide opportunities for public participation to assist us in securing the greatest permanent value from state forests for all Oregonians.

The changes that have been made to the West Oregon District Fiscal Year 2024 Annual Operations Plan since the Public Comment Period are listed below:

- A no harvest road buffer that had previously buffered an old roadbed was removed from the Double Exposure alternate sale. The pre-op map shows the location of the old roadbed. The roadbed will not need to be rebuilt to harvest the unit and there are trees growing within the road prism that are planned to be harvested with the sale and will now be counted towards the net harvest acres. The removal of the road buffer from the harvest shape resulted in an additional 1 net acre to the sale.
- Pre-Operations Reports were updated for the sales that have not yet had Geotech reviews to show that a Geotech review will be completed prior to sale layout:
  - Bon Voyage (Alternate)
  - Old Highway (Alternate)
  - Double Exposure (Alternate)
- Added a Haul Route Condition description that was missing from the Millers Woods Thin Pre-Operations Report

Below is a link to a summary of the comments received for the FY24 AOPs and ODF's responses to those comments.

<https://www.oregon.gov/odf/documents/aboutodf/2024-aop-public-comment-summary.pdf>

## **Appendix E – Pre-Operations Reports**

Pre-Operations Reports are available online through a Web Application at the following link:

<https://geo.maps.arcgis.com/apps/webappviewer/index.html?id=ae569c1ff445457eb8fe1b556699bce8>

Zoom to the district you are interested in and click on any sale. A pop-up box will show a link to the Pre-Operations Report for the selected sale.

## **Appendix F – Forest Land Management Classification**

### **Modification Notice**

No modifications are proposed with the Fiscal Year 2024 Annual Operations Plan.



## **Appendix G – Landscape Design**

### **Implementation Plan Minor Modification Notice**

No modifications are proposed with the Fiscal Year 2024 Annual Operations Plan.