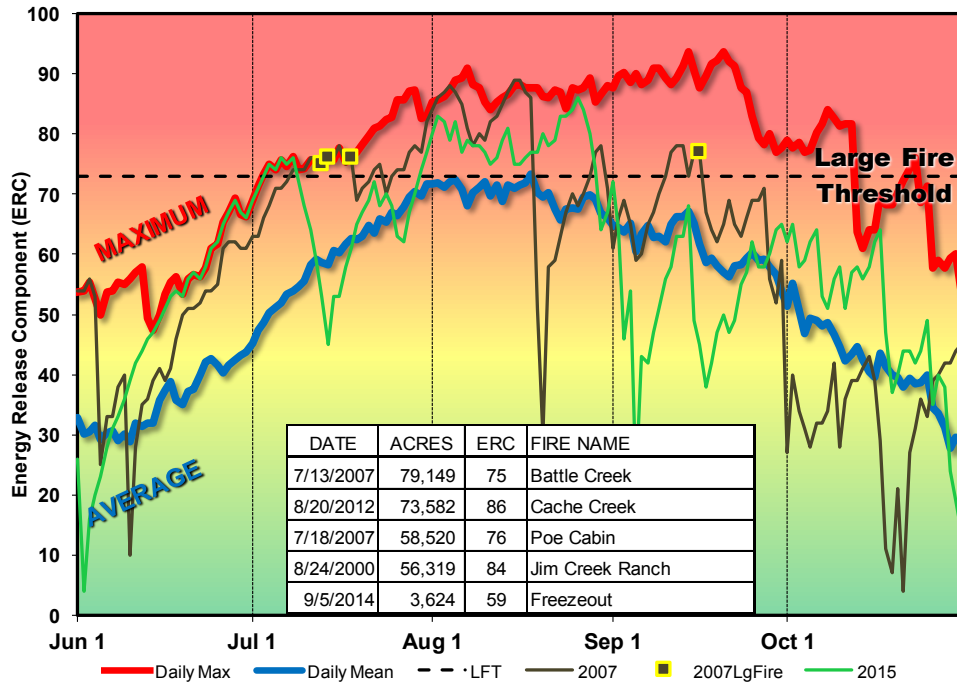


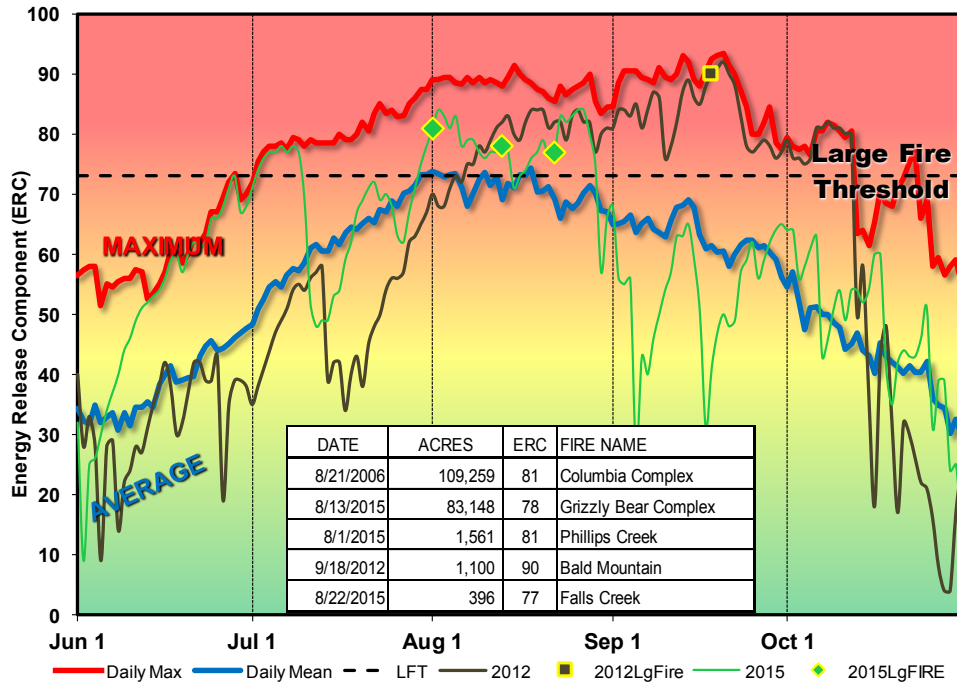
2016 Blue Mtn PocketCard - FDRA 2: Canyon Grasslands

SIG_FDRA_2 - Harl-Eden-RobertsButte; FM G 1999-2015



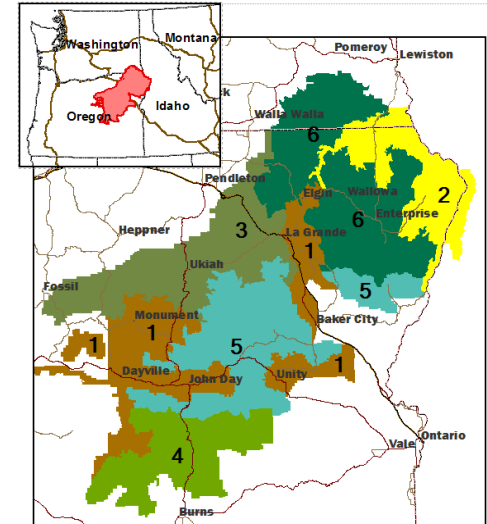
2016 Blue Mountain PocketCard - FDRA 6: Northern Blues

SIG_FDRA_6 - BlackMtn-RobertsButte-AlderRidge; FM G 1999-2015



Blue Mountain Interagency Fire Danger Pocket Card 2016

- National Forests: Malheur, Umatilla, Willowa-Whitman
- ODF Units: John Day, LaGrande, Pendleton, Willowa
- WA DNR: portions of SE Region
- 6 Fire Danger Rating Areas (FDRA)
- **All 15 weather stations (RAWS) utilized meet NWCG Standards.**



Interpretation of Charts:

- ⇒ **Title**—Describes the Fire Danger Rating Area (FDRA) the chart applies to.
- ⇒ **Subtitle**—Identifies weather stations (RAWS) utilized, NFDRS fuel model, and years analyzed for that particular FDRA.
- ⇒ **MAXIMUM**—Highest ERC recorded for that day during the analysis period.
- ⇒ **AVERAGE**—Average ERC recorded for that day during the analysis period.
- ⇒ **Large Fire Threshold**—The majority of past fires >300 acres occurred above this ERC value.
- ⇒ **Year (2007, 2012 and 2015)** are the ERC values recorded for that season.
- ⇒ **Large Fire Symbol**—Day fire discovered that resulted in a fire >300 ac.
- ⇒ **Fuel Model G**—Short Needle Conifer with Heavy Dead Down (FM10)

Remember what Fire Danger tells you:

- ☑ **Energy Release Component (ERC)** Indicates fire season severity trends. Calculated from 2pm and 24hr min/max temperature and humidity, and 24hr precipitation duration. (Wind is **NOT** part of calculation)
- ☑ **PAY ATTENTION** to local conditions and variations across the landscape: **Fuel, Weather, and Topography.**
- ☑ **LISTEN** to weather forecasts and local weather readings—especially **WIND.**

Critical Thresholds:

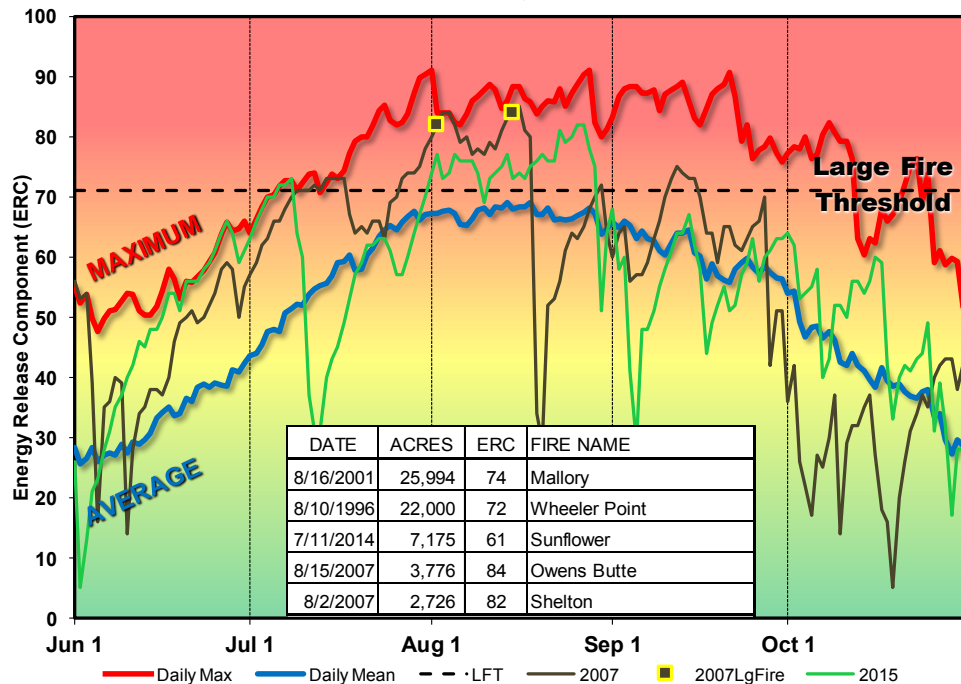
- Winds >12 MPH
- Temperature > 90
- RH < 20%
- 1000 hr fuels < 11%
- Live Woody FMC < 80%
- Haines Index 5 or 6

Watchouts: Red Flag Warnings or Very Dry Fuels combined with one of the following:

- **Lightning** with little or no precipitation.
- **Strong Winds** combined with **Low Humidity**, including Dry Cold Front passage.
- **Dry Unstable Air Mass**—Haines Index 5 or 6, including Surface Thermal Trough Passage.

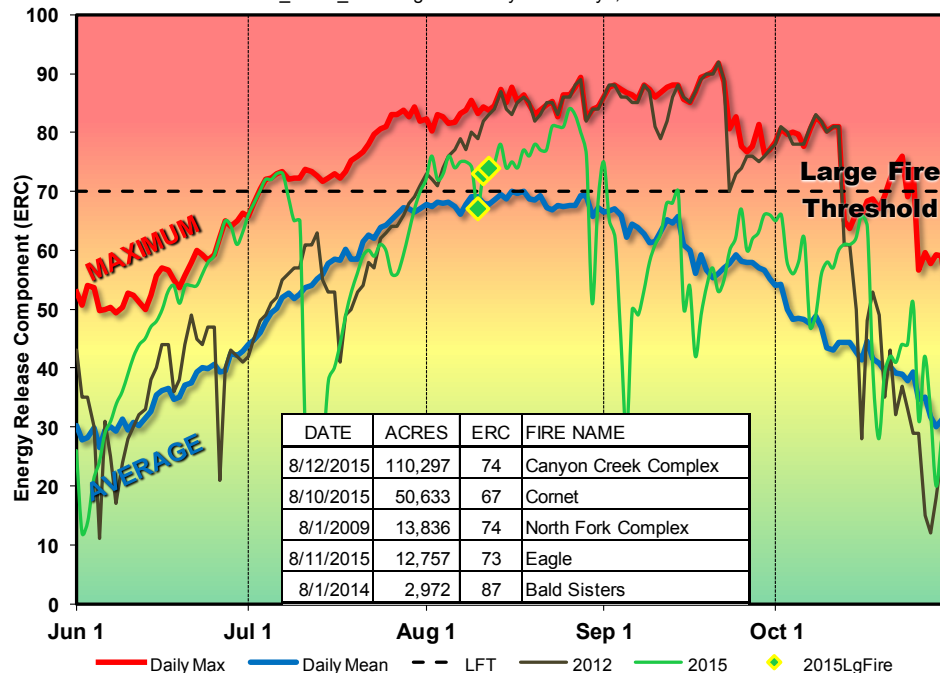
2016 Blue Mountain PocketCard - FDRA 3: Western Forested

SIG_FDRA_3 - Tupper-JRidge-Case; FM G 1993-2015



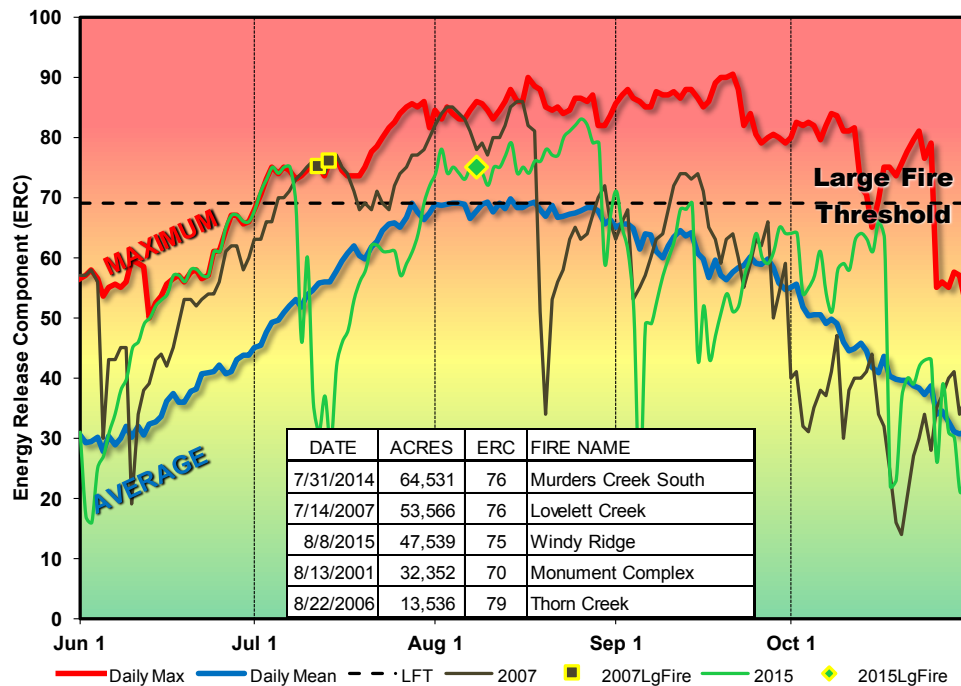
2016 Blue Mountain PocketCard - FDRA 5: Central Blues

SIG_FDRA_5 - JRidge-BlueCanyon-Keeney2; FM G 1995-2015



2016 Blue Mtn PocketCard - FDRA 1: Juniper-Sagebrush

SIG_FDRA_1 - BoardCrk-SpartaButte; FM G 1993-2015



2016 Blue Mountain PocketCard - FDRA 4: Southern Blues

SIG_FDRA_4 - CranePrairie-CrowFlat-Antelope; FM G 1993-2015

