

# Compliance Monitoring Updates

Northwest Oregon

Regional Forest Practice Committee Meeting

May 16, 2025



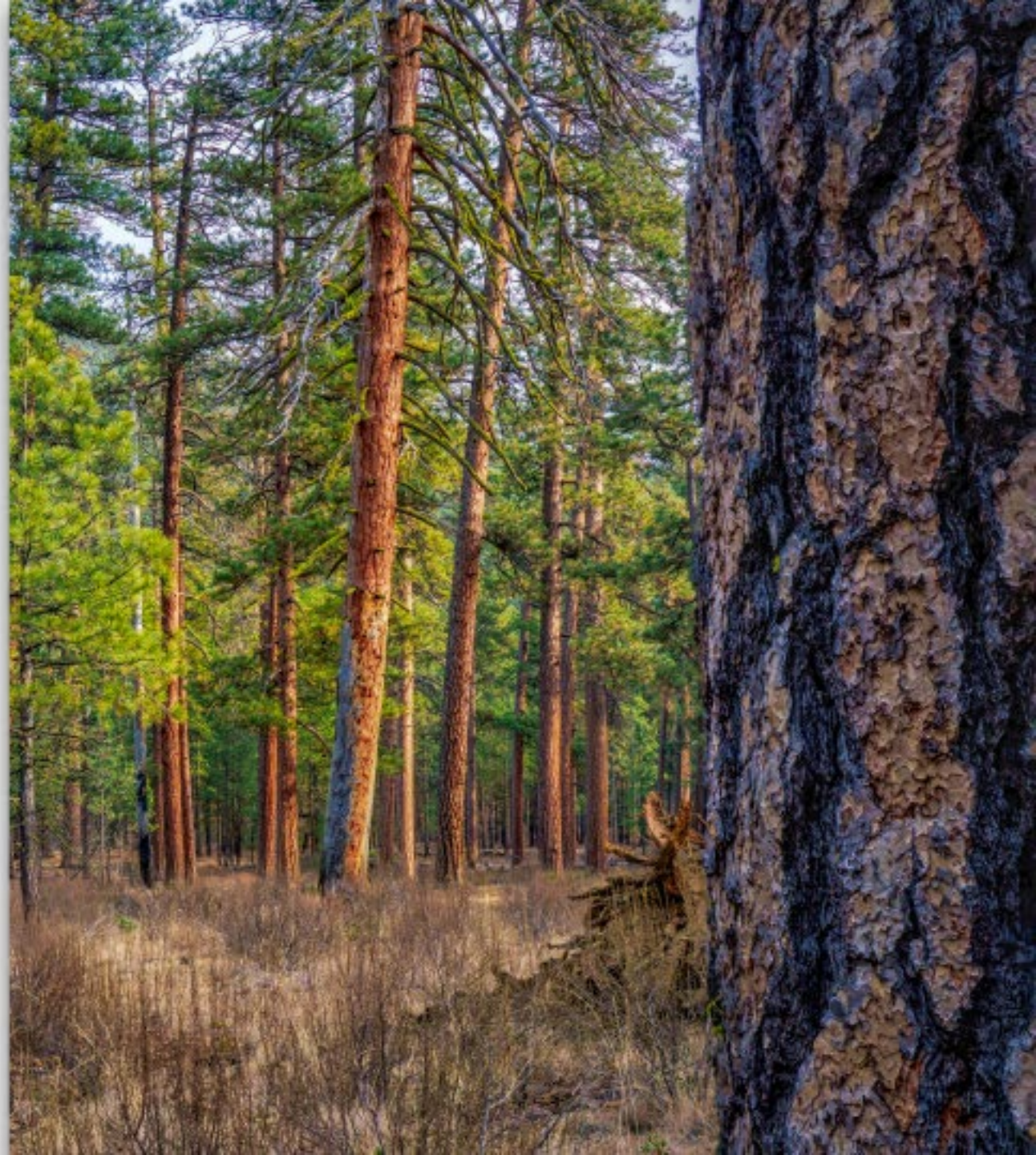
**Water Quality & Compliance Monitoring Manager:** Adam Coble  
**Monitoring Staff:** Rebecca McCoun, Emily Martin, John Hawksworth,  
David Showalter, Sarah Siefken, Elise Chiba, & Marta Frias Bedolla





# Topics

- Overview of Compliance Monitoring Program
- Update on Compliance Monitoring Studies
- Q&A







# Compliance Monitoring Program (CMP)

## Purpose & Goals (OAR 629-678-0000)

1. Monitor forest practice rule implementation & analyze compliance rates.
2. Assess Forest Practice Act (FPA) rule compliance & report findings
3. Provide information that will improve FPA rule compliance through training, guidance, clarification, & targeted enforcement, thereby increasing the public's trust in the implementation of the FPA & rules.



<https://tinyurl.com/ODF-Monitoring>







# Background: CMP History

## Before PFA

- **1998 – 2002:** Best management practices studies
- **2013 – 2017:** Forest practices monitoring implementation studies

## After PFA

- **2022 – present:** Establish long-term forest practices compliance monitoring





A close-up photograph of a fir tree branch with several small, brown, cone-like structures (possibly seed cones or buds) and green needles. The background is a blurred mountain landscape.

## Background: Recent Changes

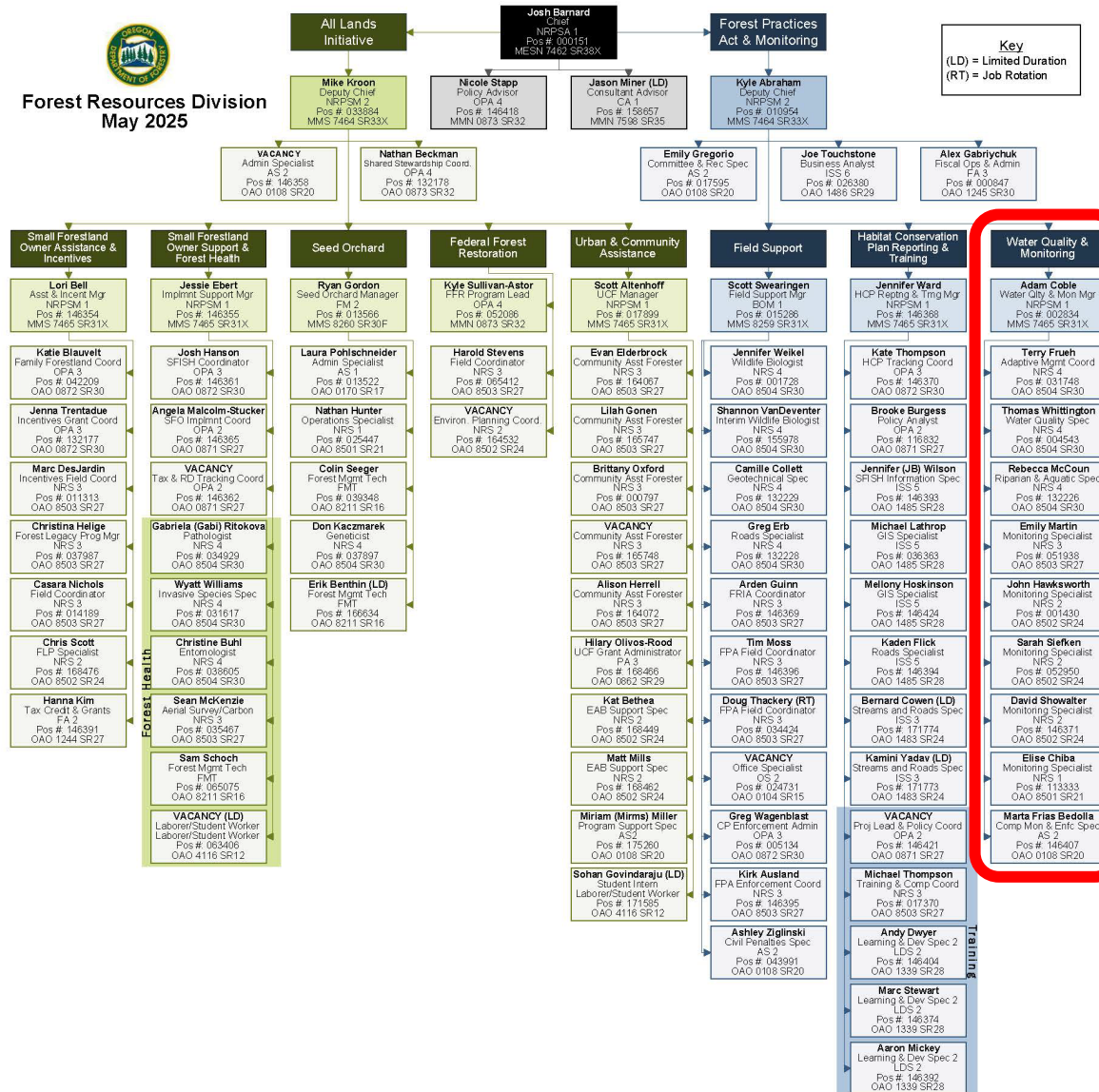
### **Rule Priorities**

- Vegetation along streams
- Road construction & maintenance
- Harvesting on steep slopes
- Other rules as directed by Board of Forestry





# Compliance Monitoring Program





# Who Does What?

## Compliance Monitoring

- Assesses compliance with forest practice rules
- Statewide statistical studies; no enforcement
- Informs education, outreach, & process improvement



## Stewardship Foresters

- Conduct site-specific inspections & enforcement
- Focus on high-risk, complex operations
- Provide technical assistance to landowners



## Effectiveness Monitoring

- Evaluates if rules achieve resource protection goals
- Works with AMPC & IRST
- Informs rule changes & guidance updates







# Increasing Public Understanding: Compliance Monitoring Story Map

ODF Compliance Monitoring Program (DRAFT)



## ODF Compliance Monitoring Program (DRAFT)

Understanding the Oregon Department of  
Forestry's Compliance Monitoring Program.

Oregon Department of Forestry  
Draft



# Compliance Monitoring Study Development







# Compliance Monitoring Study Process

Rule Selection

## Pilot Study

- Study Design
- Data Collection
- Data Analysis
- Report

## Full Study

- Study Design
- Data Collection
- Data Analysis
- Report

Education & Outreach





# Collaborative Partners



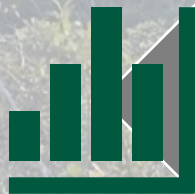
## Oregon Department of Forestry

- Includes Monitoring Unit staff, FPA Field Coordinators, & other subject matter experts



## Compliance Monitoring Program Committee

- Stakeholder advisory committee with representatives from state agencies, industry, conservation groups, etc.



## Mount Hood Environmental

- External statistician assisting with study design & data analysis





# Rule Selection

- Which FPA rules can be translated into research questions for CMP studies?
- Prioritize rules
  - Impractical to monitor every rule
  - Focus on rules that are most critical & feasible for monitoring
- Each rule is framed as a question & analyzed to determine its suitability for inclusion in monitoring studies



FPA Rule



Study Question



# Rule Selection: Key Questions

- Is the rule easily measurable?
- Has this rule been assessed in previous ODF monitoring studies?
- Do other states include this rule in their compliance programs?
- Are there past compliance issues or penalties related to this rule?
- Can compliance be determined 1-2 years after the activity? (Or is it better assessed by a Stewardship Forester?)





# Rule Selection Example

## FPA Rule



### **OAR 629-643-0105**

#### **Western Oregon Standard Practice Vegetation Retention Prescription for Type N Streams**

- (3) For large and medium Type N streams, the operator shall:
- (a) Retain all trees and vegetation within 75 feet from the edge of the active channel or channel migration zone.



## Study Question



**Q.** For large & medium Type N streams: Did the operator retain all trees & vegetation within 75 ft from the edge of the active channel or channel migration zone?





# Current Compliance Monitoring Studies







# Compliance Monitoring Studies

## Reforestation Rules



✓ Finished

## Riparian Rules



## Road Rules



## Steep Slopes Rules



In Progress



# Compliance Monitoring Studies: **Reforestation Study**







# Reforestation Study: Ruleset Overview

## Division 610 Forest Practices Reforestation Rules

- Study estimated percent compliance with selected rules related to **Free to Grow (FTG)** stocking standards.



Image credit: Oregon Forest  
Resources Institute



# Reforestation Study: Results



Landowner Type	Required SEQ/Acre	Harvest Units (n=)	Compliance Estimate	95% Binomial Tolerance Interval
PI	125	8	100%	100% – 100%
PI	200	31	90.3%	76.6% – 100%
PI total	-	39	92.3%	80.9% – 100%
PNI	200	25	76%	55.2% – 94.8%
<b>Overall</b>	<b>-</b>	<b>64</b>	<b>89.4%</b>	<b>76.3 % - 99.1%</b>







## Reforestation Study: Main Points

Reforestation  
compliance is high  
overall

Nonindustrial  
landowners face  
greater challenges







# Reforestation Study: Education & Outreach

- **Communication Plan:** Share study results & improve understanding of reforestation compliance
- **Key Audiences:** ODF staff, landowners, CMPC, BOF, industry & conservation groups, public
- **Communication Strategies:**
  - Presentations, trainings, & committee updates.
  - Report & online resources.
  - Outreach through partner organizations.

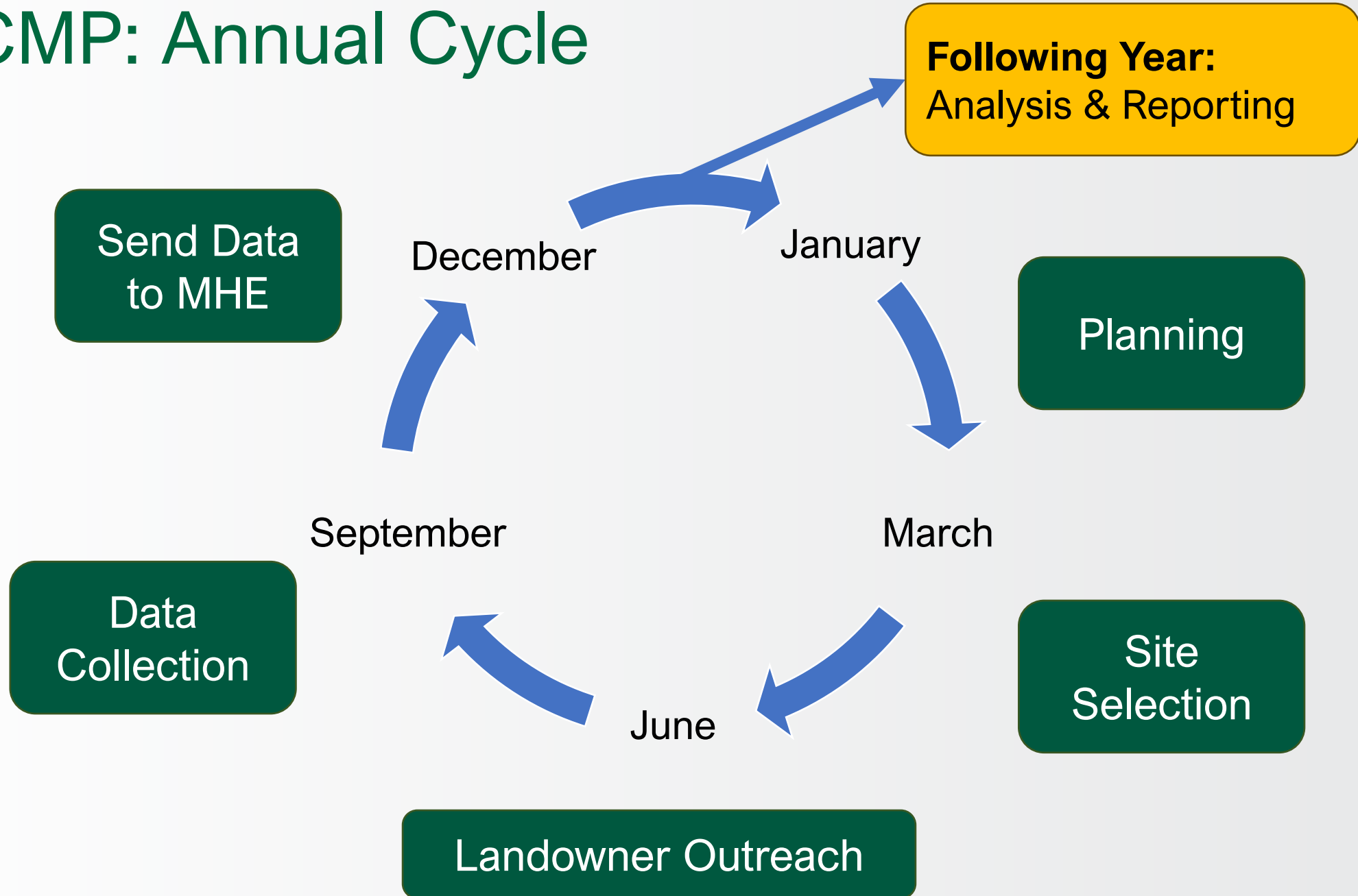


Reforestation training for ODF stewardship foresters, Feb. 2025





# CMP: Annual Cycle





# Compliance Monitoring Studies: **Riparian Pilot Study**

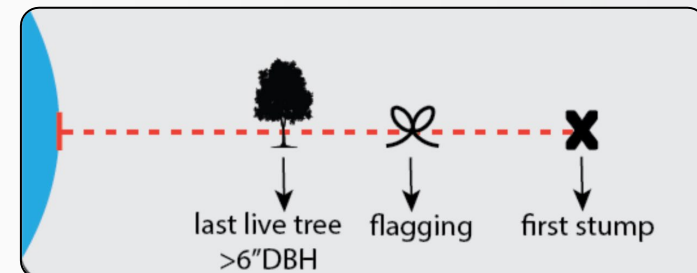




# Riparian Pilot Study: Ruleset Overview

## Division 643 Water Protection Rules: Vegetation Along Streams

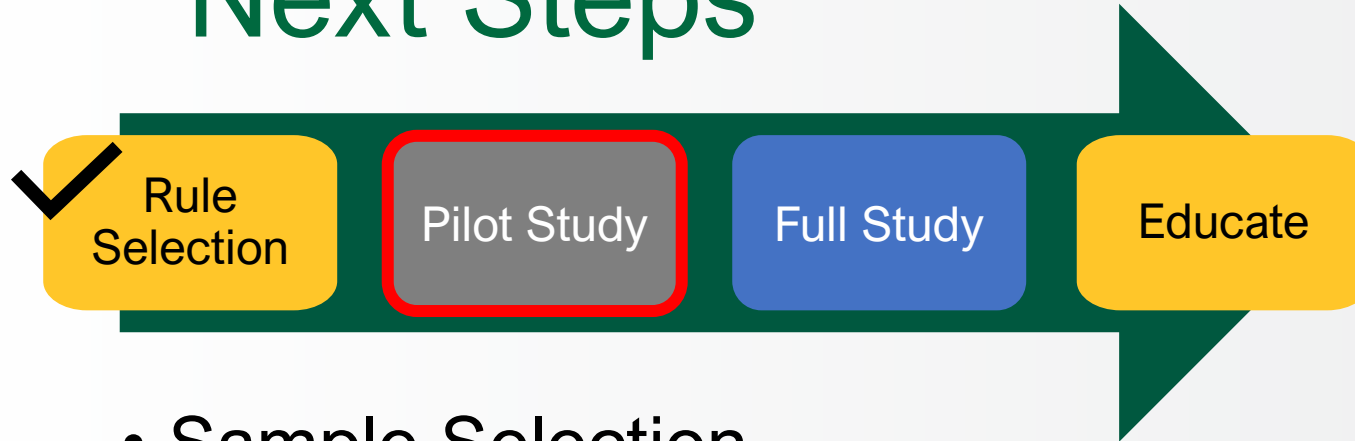
- **Pilot study** will **refine methods** that will be used in a future compliance monitoring study on stream buffer rules.
- Measure **Riparian Management Area (RMA)** widths from active channel to last live tree, flagging, & first harvested tree.



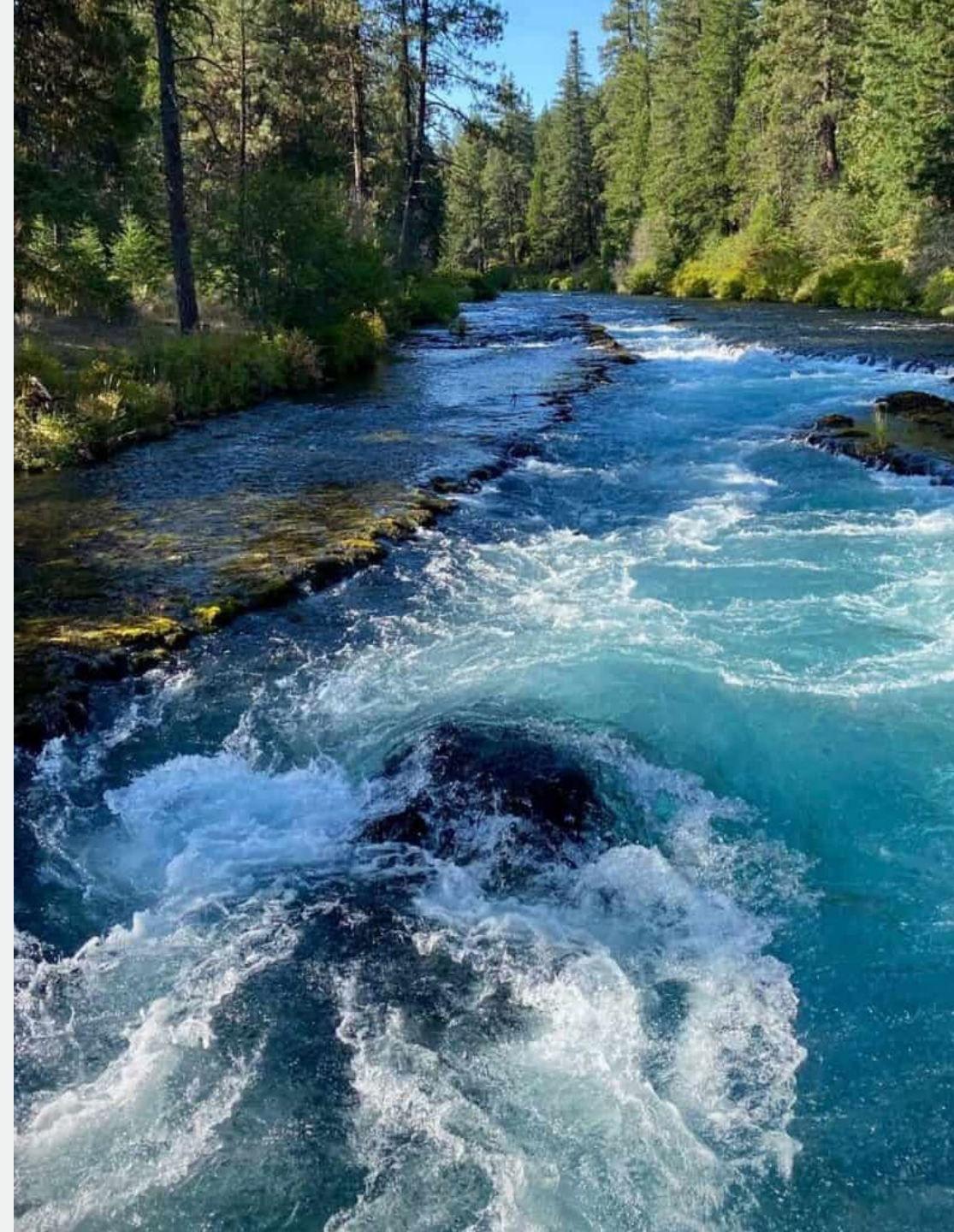




# Riparian Pilot Study: Next Steps



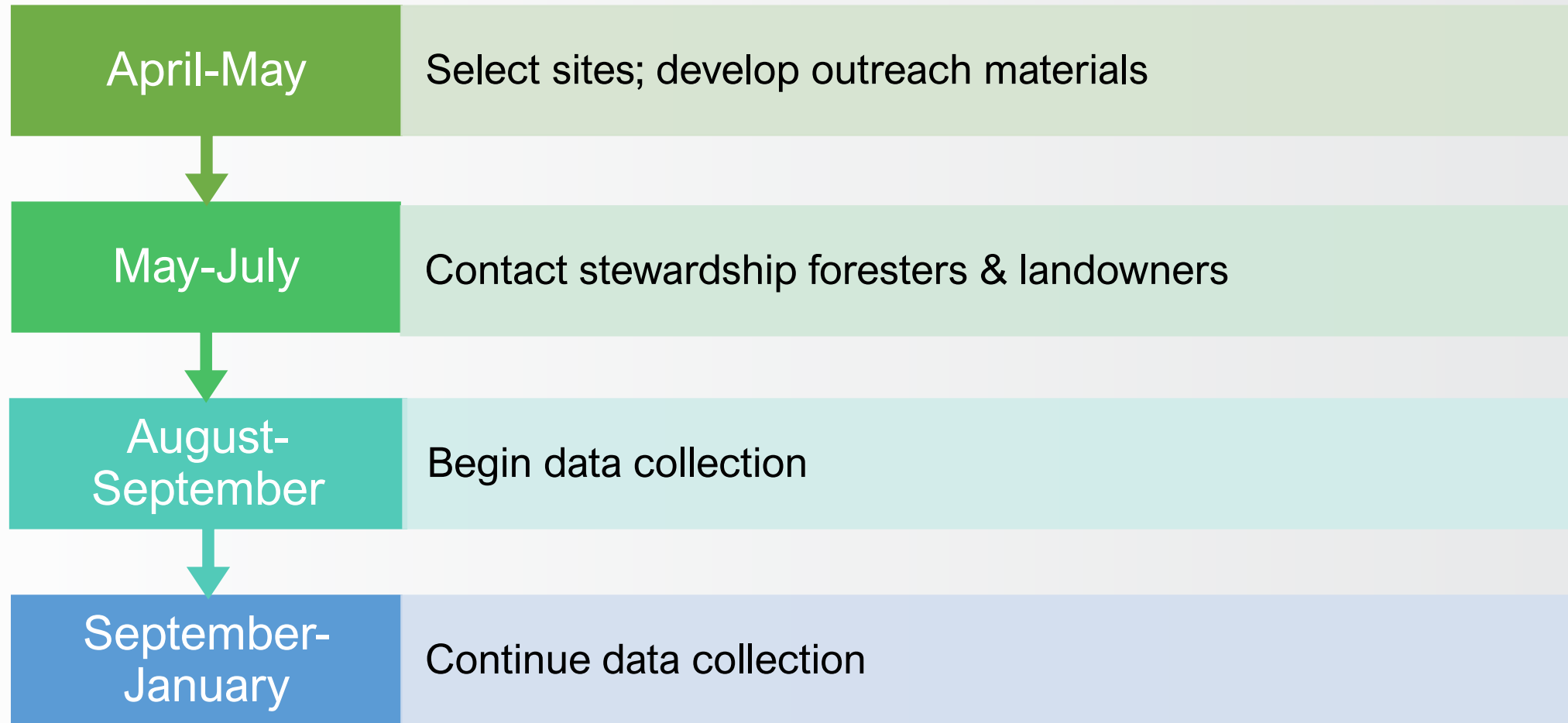
- Sample Selection
  - Randomly draw candidate units from FERNS
  - Coordinate with stewardship foresters
  - Incorporate CMPC feedback
  - Begin contacting landowners







# Riparian Pilot Study – 2025 Timeline





# Compliance Monitoring Studies: **Roads & Steep Slopes Pilot Studies**

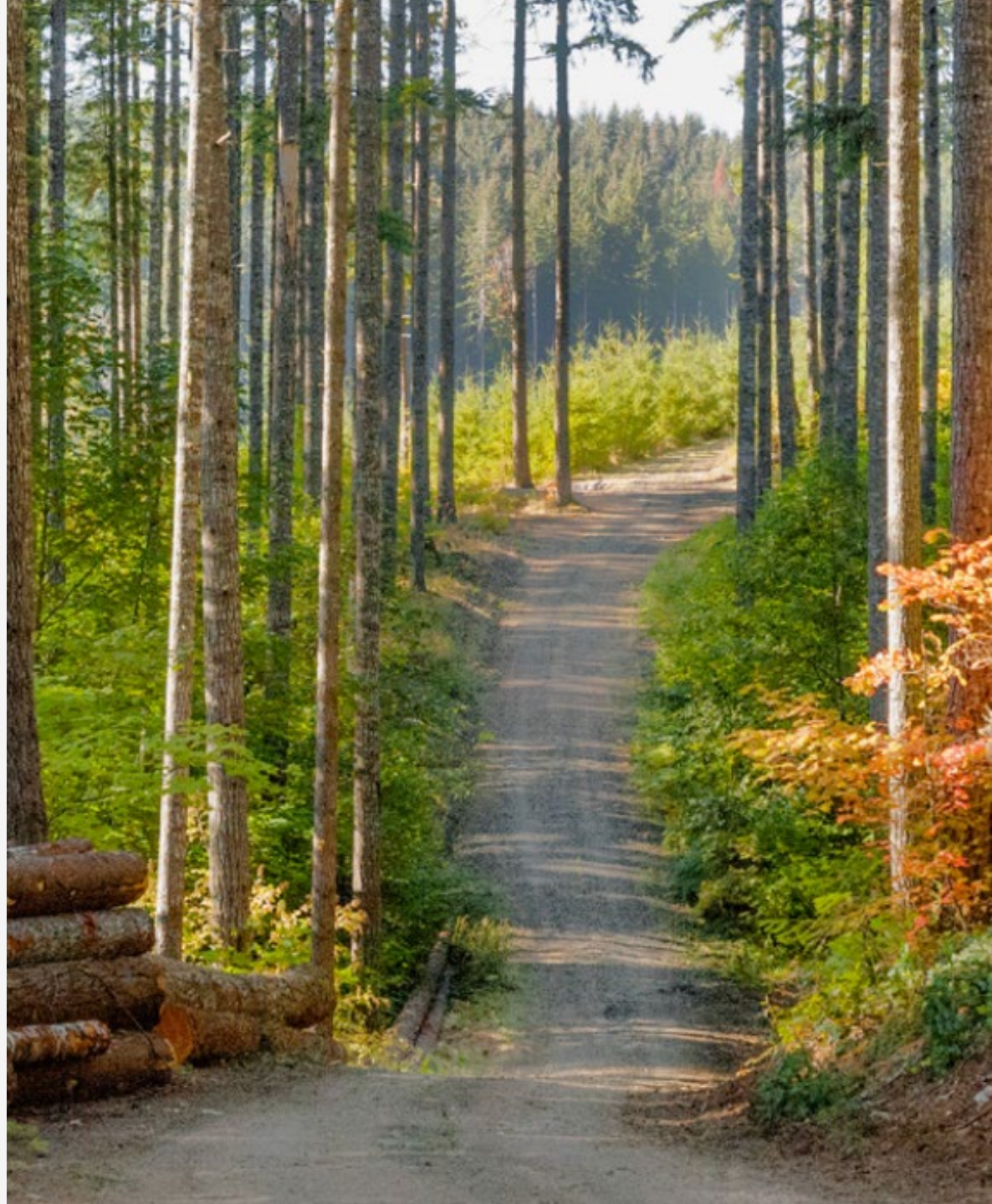






# Roads & Steep Slopes: Ruleset Overview

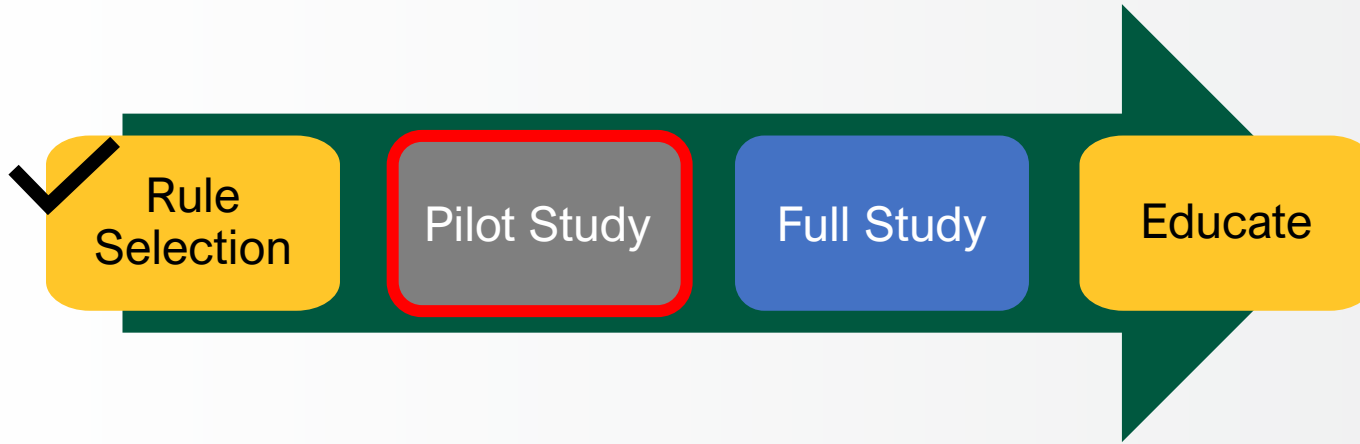
- **Division 625** Forest Road Construction & Maintenance
- **Division 630** Harvesting on Steep Slopes



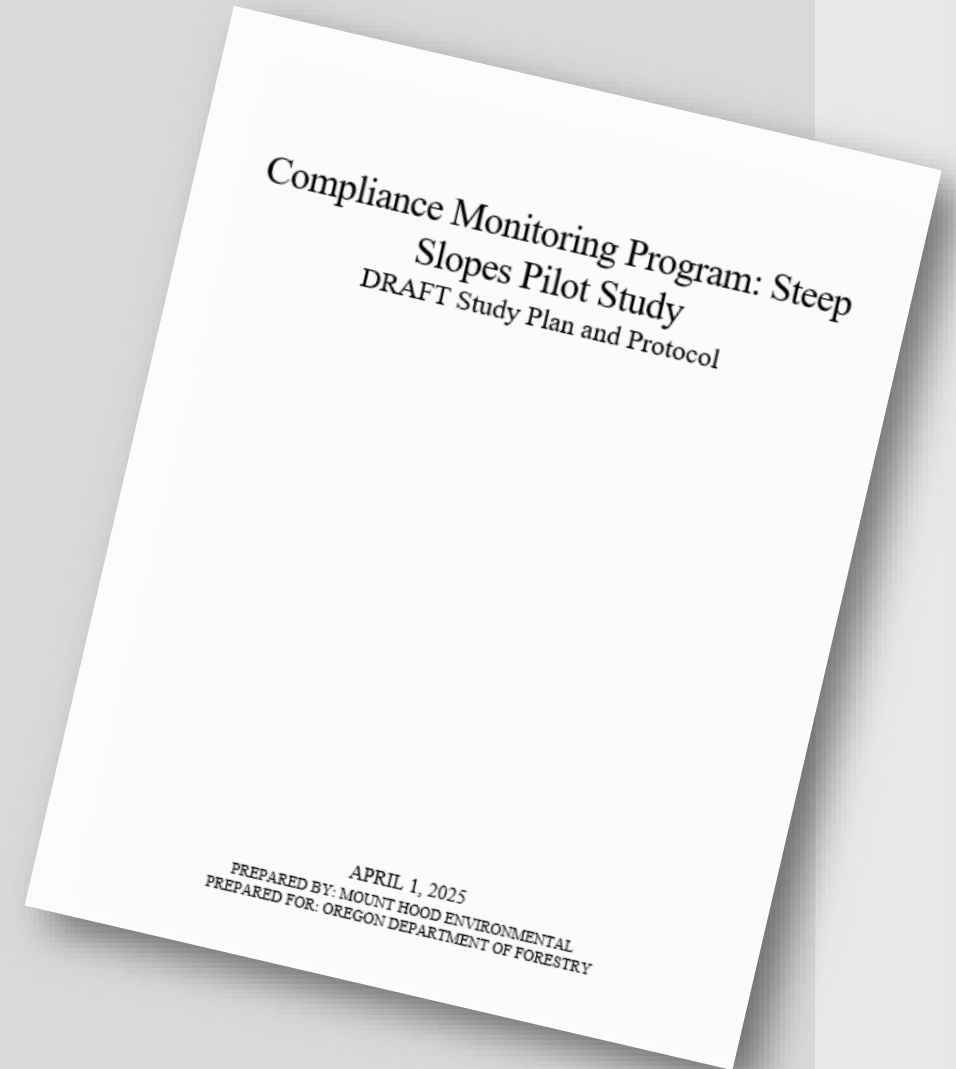




# Roads & Steep Slopes: Current Phase



- Rule selection completed (Spring 2025)
  - Identified rules for pilot study
- Pilot study design underway
  - Draft protocol document completed by Mount Hood Environmental (April 2025)
  - Currently under internal review
  - CMPC review (Summer 2025)

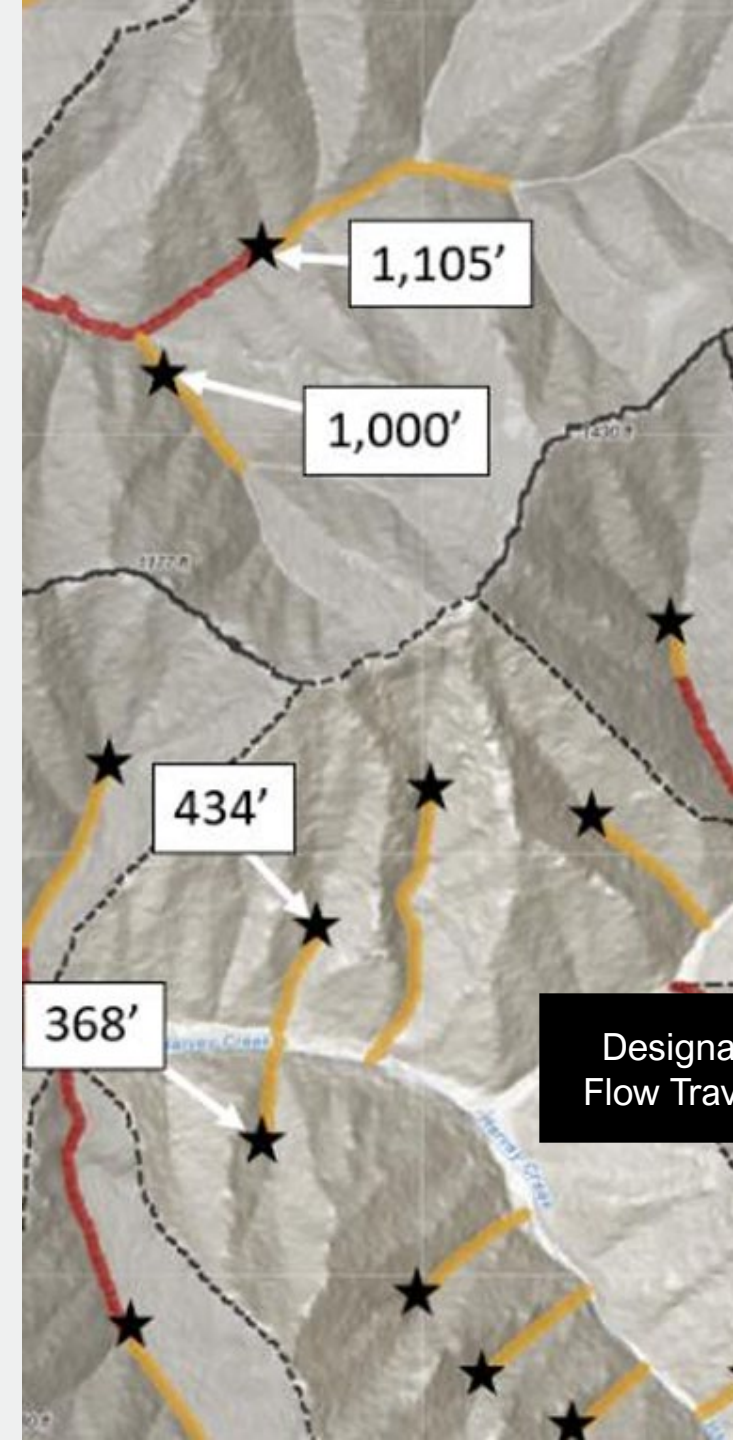






# Roads & Steep Slopes: Early Insights

- Balance quantitative rigor with qualitative rule language (e.g., “minimize sediment”)
- Some rules are highly technical
- For certain new rules, low implementation rates currently limit available sample size
- Decided to separate roads & steep slopes into two pilot studies







# Five-Year Outlook: Monitoring Studies

Study	Timeframe
Riparian Pilot Study	Fall 2025 to Spring 2026
Roads & Steep Slopes Pilot Studies	Fall 2026 to Spring 2027
Riparian Study	Fall 2027 to Spring 2028
Roads & Steep Slopes Studies	Fall 2028 to Spring 2029
Riparian Study	Fall 2029 to Spring 2030

- Two-year reporting to Board of Forestry (i.e., BoF Meeting)
- 8-year aggregate cumulative report (Compliance Trends)

# Questions?

