

Agenda Item No.:	F
Work Plan:	State Forests Work Plan
Topic:	Status of Parcel in Coos County as Common School Forest Land
Presentation Title:	Decertification Actions by ODF on Coos County Common School Forest Land
Date of Presentation:	January 7, 2025
Contact Information:	Mike Wilson, Chief - State Forests Division 503-945-7351; Michael.Wilson@odf.oregon.gov

SUMMARY

The Board of Forestry is requested to make findings to complete the decertification and redesignation of approximately 80 acres of Common School Forestlands within Coos County, effective July 1, 2026 or earlier if conditions allow, in order to complete the statutory requirements to return these lands to their original status and ensure all applicable procedures are addressed pursuant to ORS 530.470(2). The State Land Board voted to remove the designation of these lands as Common School Forest Lands pursuant to the statute at its December 3, 2025 meeting.

CONTEXT

Lands owned by the State of Oregon and under the jurisdiction of the Department of State Lands (“DSL”) that are “primarily suited for the growing of timber and other forest products” are required to be designated and set apart as “Common School Forest Lands” (“CSFL”) by the Department of State Lands and the State Board of Forestry, and such lands are withdrawn from sale. ORS 530.460.

The process by which such lands are designated is through the adoption of separate board resolutions of the State Land Board and the Board of Forestry, describing the lands to be set aside as CSFL. ORS 530.480. A copy of each board resolution, certified by the Director of DSL and the State Forester, respectively, together with a description of the lands involved, are to be filed with the Secretary of State. *Id.*

Periodically as necessary, DSL and the Board of Forestry were and are to designate and set aside CSFL “as rapidly as forestry data and information are obtained ... of the lands eligible for dedication under ORS 530.450 to ORS 530.520.” ORS 530.470(1).

After such designations, the State Forester, under supervision of the Board, was and is authorized to manage the CSFL lands. ORS 530.490.

These designated lands “may, at any time, be returned to their original status *by similar actions of said agencies*, if said lands are to be used for higher and better use for the general public, including the sale of said lands where lawful.” ORS 530.470(2) (emphasis added). This has consistently been done by separate complimentary resolutions of the State Land Board and the Board of Forestry. *See* ORS 530.480.

Under the Interagency Agreement between the Department of State Lands and the Oregon Forestry Department, Section 7, Common School Forest Lands so designated by each board and committed to the management of ODF are defined as “certified” lands and when removed from ODF management, are defined as “decertified” lands.

BACKGROUND AND ANALYSIS

Approximately 26,170 acres of DSL forestlands are managed by ODF, including the 80-acre Winchester uplands located on the southeast boundary of the Reserve. The Reserve is a 7,000-acre site on Oregon’s southern coast overseen by DSL and managed for long-term research, education, recreation, and the protection of natural and cultural resources. ODF had previously planned timber harvests on the Winchester property; however, the discovery of marbled murrelet activity, an endangered species, put harvest plans on hold and ODF has initially planned this property to be included as an HCA area in ODF’s draft plans and will remain in a conservation status upon transfer. Since 2022, the Reserve has pursued acquisition of the Winchester property. In December 2023, the Land Board authorized due diligence and funding efforts for the transfer. Earlier in 2025, the Reserve was awarded a grant from the National Oceanic and Atmospheric Administration through the Bipartisan Infrastructure Law to fund the purchase and transfer of the Winchester property from the Common School Fund to the Reserve.

DSL relates that the transfer to the Reserve enhances DSL’s strategic goals by:

- Generating revenue for the Common School Fund,
- Supporting a thriving Oregon through habitat restoration and resilience, and
- Expanding opportunities for research and stewardship at the Reserve.

As a result of this planned transfer, continued ODF management of the property is no longer necessary.

ODF Staff concurs with the DSL Staff Report to the State Land Board (Attachment 1) and the maps contained therein, and recommends the Board of Forestry here adopt the proposed decertification Resolution and Order consistent with the State Land Board’s December 3, 2025 action.

ALTERNATIVES CONSIDERED

None.

RECOMMENDATION

- **The Department recommends that the Board approve the removal of the Common School Forest Land designation and the decertification of the approximately 80 acres currently designated as Common School Forest Lands in Coos County as identified on the DSL Staff Report to the State Land Board, Attachment 1 Appendix A, pursuant to the proposed Resolution and Order, Attachment 2.**

NEXT STEPS

- Upon change of designation and decertification, no further action is required of the Board. The State Forester, as Secretary of the Board, is required to send a certified copy of the Resolution and Order to the Director of the Department of

State Lands and the Secretary of State pursuant to ORS 530.480, and the Interagency Agreement Exhibit of Certified lands will be amended to reflect the removal of these acres.

ATTACHMENTS

1. DSL Staff Report to the State Land Board (December 3, 2025)
2. Proposed Resolution and Order of Board Reclassifying Common School Forest Lands



Oregon

Tina Kotek, Governor

Department of State Lands

775 Summer Street NE, Suite 100

Salem, OR 97301-1279

(503) 986-5200

FAX (503) 378-4844

www.oregon.gov/dsl

State Land Board

Tina Kotek

Governor

Tobias Read

Secretary of State

Elizabeth Steiner

State Treasurer

State Land Board

**Regular Meeting
December 3, 2025
Agenda Item 3**

SUBJECT

Common School forestland adjacent to the South Slough National Estuarine Research Reserve

ISSUE

Whether the State Land Board should approve the decertification of 80 acres of Oregon Department of Forestry-managed forestlands, known as Winchester property, within the Coos District to allow for acquisition of the property by the South Slough National Estuarine Research Reserve (Reserve).

AUTHORITY

- Oregon Constitution, Article VIII, Sections 2 and 5; pertaining to the Common School Fund and land management responsibilities of the State Land Board.
- ORS 273.141; relating to the nature of services provided by other agencies
- ORS 273.171; relating to the duties and authority of the Director
- ORS 530.460; relating to the designation of Common School Forest Lands
- ORS 530.470; relating to the determination of the designation of Common School Forest Lands
- ORS 530.480; relating to the filing of resolutions made by the boards

BACKGROUND

For many decades, Oregon Department of Forestry (ODF) has managed and sustainably harvested many Oregon Department of State Lands (DSL) forestlands, generating revenue for the Common School Fund through timber harvests and other forest product sales.

AGENDA ITEM F

Attachment 1

Page 1 of 3

Approximately 26,170 acres of DSL forestlands are managed by ODF, including the 80-acre Winchester uplands located on the southeast boundary of the Reserve. The Reserve is a 7,000-acre site on Oregon's southern coast overseen by DSL and managed for long-term research, education, recreation, and the protection of natural and cultural resources. ODF had previously planned timber harvests on the Winchester property; however, the discovery of marbled murrelet activity, an endangered species, put harvest plans on hold.

Since 2022, the Reserve has pursued acquisition of the Winchester property. In December 2023, the Land Board authorized due diligence and funding efforts for the transfer. Earlier in 2025, the Reserve was awarded a grant from the National Oceanic and Atmospheric Administration through the Bipartisan Infrastructure Law to fund the purchase and transfer of the Winchester property from the Common School Fund to the Reserve.

This transaction advances the Department's strategic goals by:

- Generating revenue for the Common School Fund,
- Supporting a thriving Oregon through habitat restoration and resilience, and
- Expanding opportunities for research and stewardship at the Reserve.

As a result of this planned transfer, continued ODF management of the property is no longer necessary.

Decertification and Next Steps

The removal of this property from ODF management is a process known as decertification. Decertification of Common School forestlands requires approval by both the Land Board and the Oregon Board of Forestry. Following Land Board approval, this request will go before the Board of Forestry for final action.

The Department anticipates returning to the Land Board in late 2026 for final approval of the land sale. Work remains on mineral rights, completing a land survey, environmental analysis, and other important steps in the due diligence process.

RECOMMENDATION

The Department recommends that the Land Board approve the decertification of the 80 acres of the Winchester uplands within ODF's Coos District, effective July 1, 2026, or earlier if conditions allow.

APPENDICES

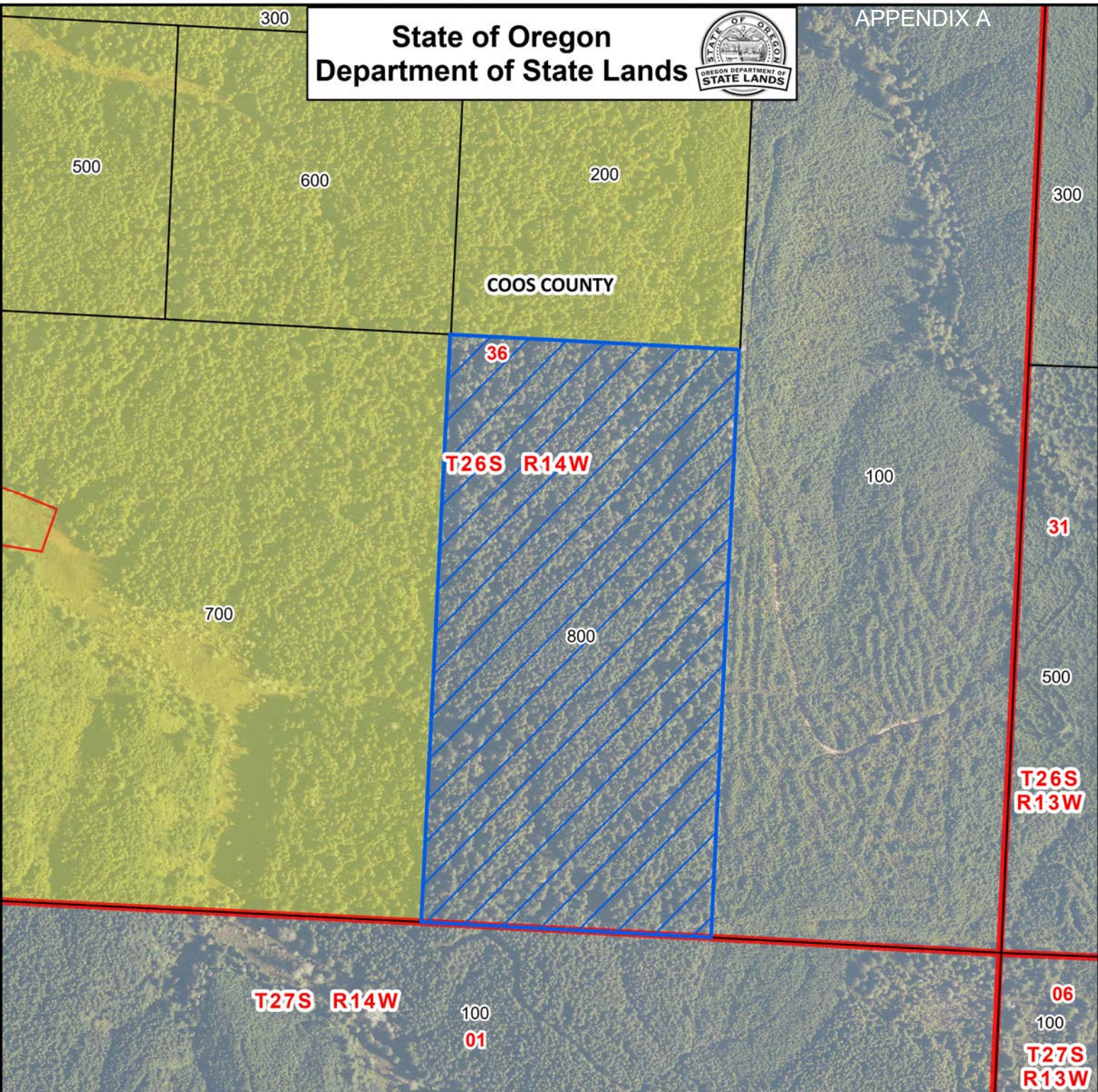
- A. Map of the Winchester Property

Agenda Item 3
December 3, 2025
Page 2 of 2

State of Oregon
Department of State Lands






APPENDIX A



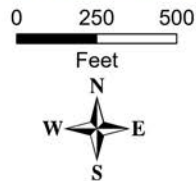
APPENDIX A

64570-LS
T26S, R14W Section 36, Tax Lot 800
Coos County
Approx. 80 Acres

-  Winchester Property
-  Land Managed by South Slough National Estuarine Research Reserve
-  Tax Lot

2024 Aerial Photo

This map depicts the approximate location of a proposed authorization. This product is for informational purposes only and may not have been prepared for, or be suitable for legal, engineering, or surveying purposes. Users of this information should review or consult the primary data and information sources to ascertain the usability of the information.



Map Projection:
Oregon Statewide Lambert
Datum NAD83, International Feet
State of Oregon
Department of State Lands
951 SW Simpson Ave., Suite #104
Bend, OR 97702
503-388-6112
www.oregon.gov/DSL
Date: 11/13/2025

