



*Oregon*TM
STATE FORESTS
Our COMMON GROUND

Western Oregon State Forests Management Plan

Board of Forestry June 3, 2026

Brief Timeline of FMP Development

- Guiding Principles for plan development (2018)
- FMP with HCP for ESA compliance (2020)
- Goal and Strategy development (2021/2022)
- First Draft FMP submitted (2023)
- FTLAC engagement, scenario development (2023/2024)
- Modeled Scenarios (2025)
- Rulemaking and Public Comment (2025 – present)

Revised Final Draft FMP – Types of Edits

- Clarity, readability
- Strategies and intent statements
- Connections to other plans and policy documents
 - Vision for Oregon's Forests
 - Climate Change and Carbon Plan
- Roles, responsibilities, and decision authorities

Plan Themes

- Greatest Permanent Value
- Considering and Engaging All Oregonians
- Resilience to Climate Change
- Sustainability
- Adaptive Management



*Oregon*TM
STATE FORESTS
Our COMMON GROUND

Management Approach

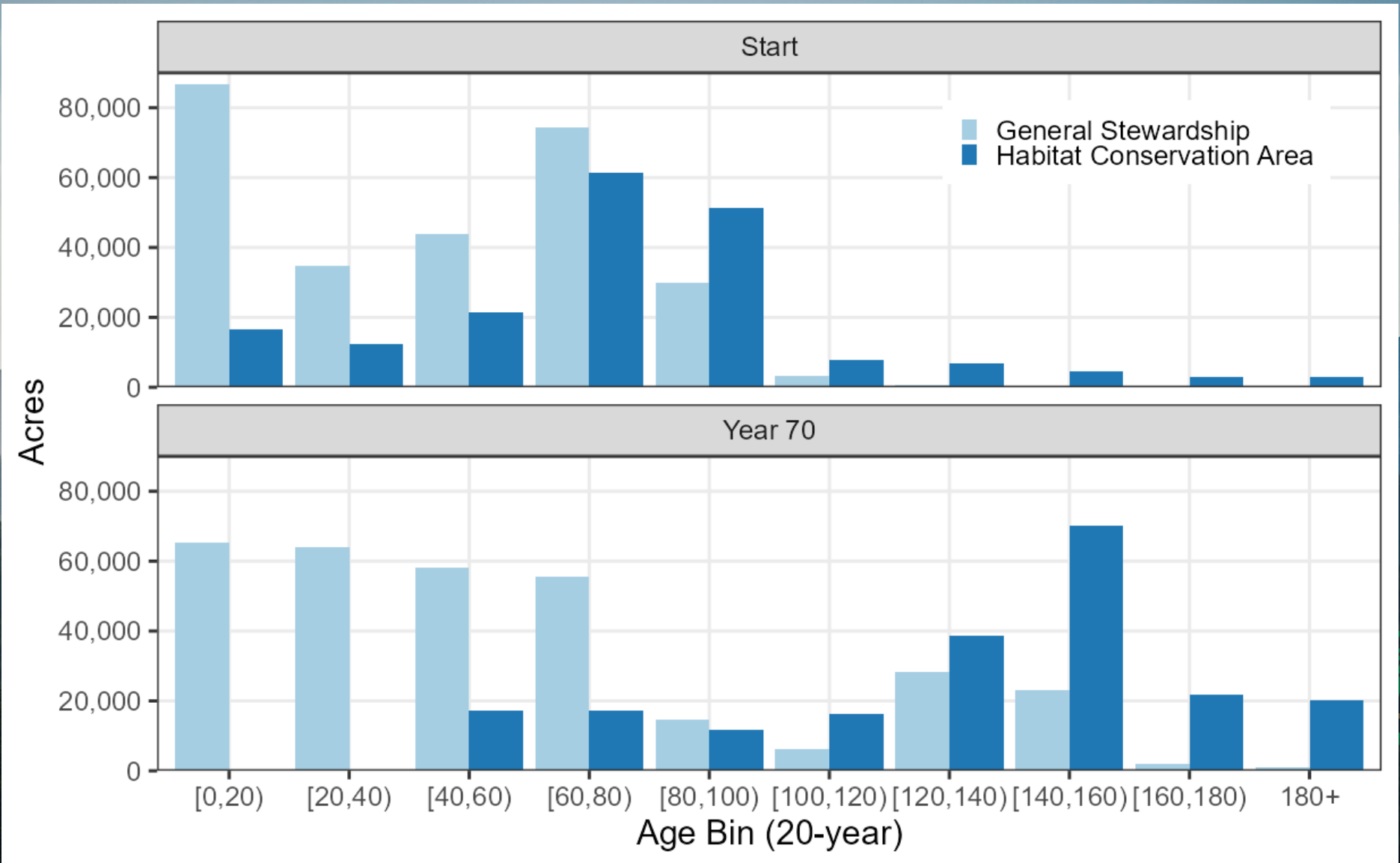
- Ecologically Sustainable Forest Management
- Ecosystem Services
- Resilient Forests
- Incidental Take Permits/Habitat Conservation Plan
- Landscape Design - Emphasis Areas
- Future Options – Timber Asset, Carbon Markets, Conservation

HCP Commitments – HCAs and RCAs

Location	HCAs	RCAs	Total
Permit Area	275,000 (43%)	42,000 (7%)	317,000 (50%)
North Coast	217,000 (34%)	36,000 (6%)	253,000 (40%)
Willamette Valley	33,000 (5%)	4,000 (<1%)	37,000 (6%)
Southern Oregon	25,000 (4%)	2,000 (<1%)	27,000 (4%)

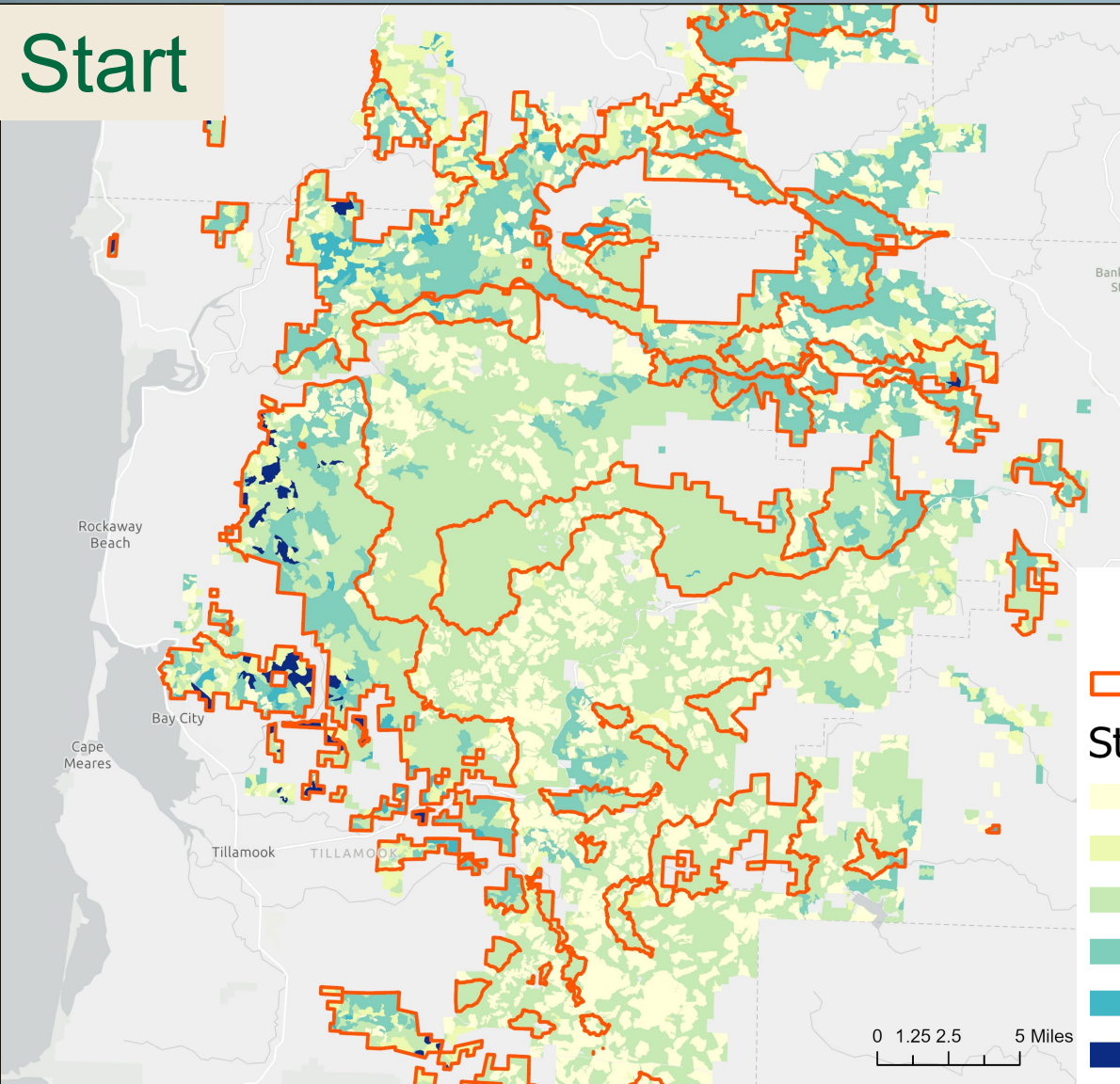
Species	Highly Suitable	Suitable
NSO	97%	59 – 63%
MM	96 – 97%	69 – 74%
RTV	76 – 81%	59 – 65%

Age Class Structure – Current and Projected

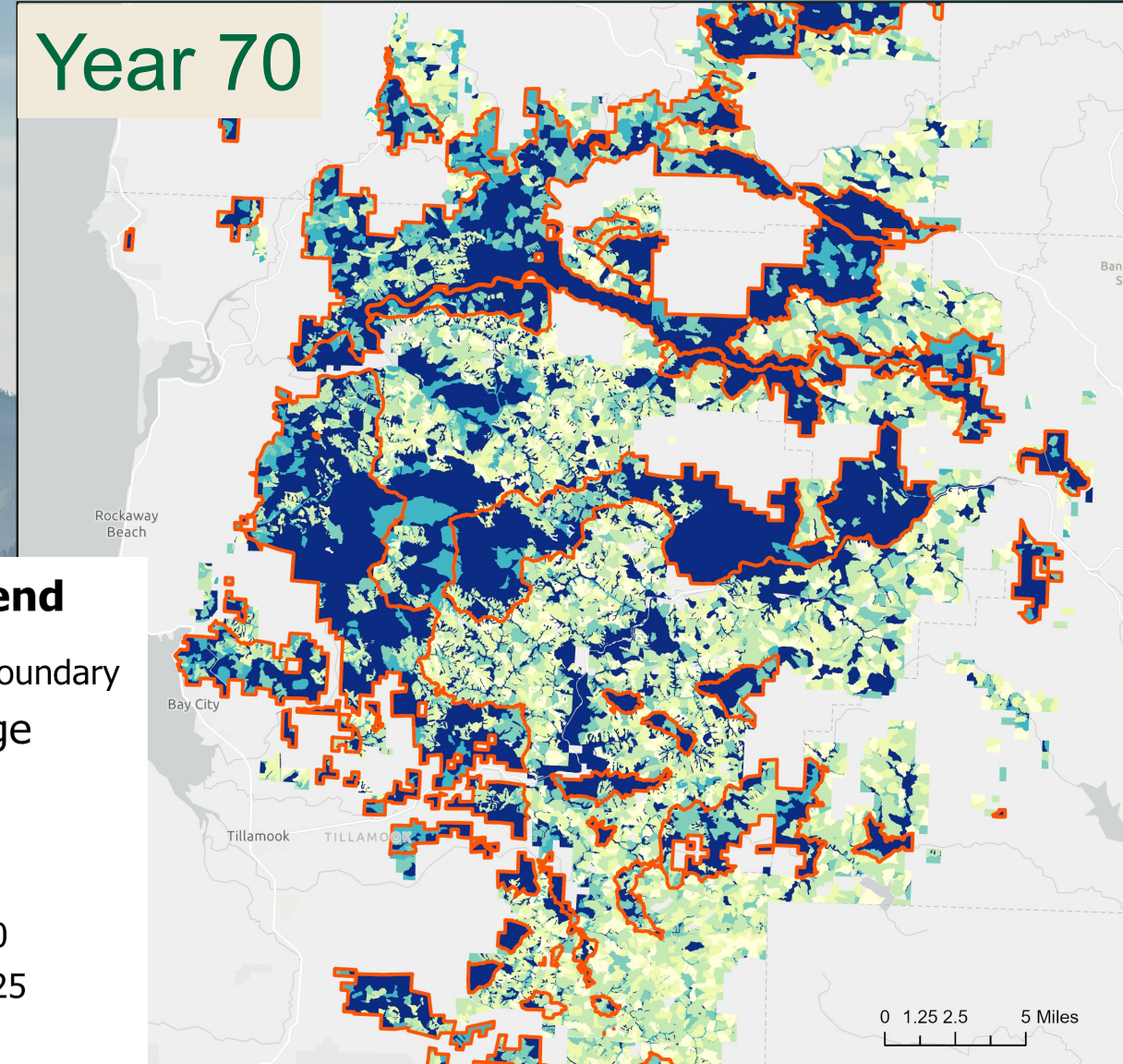


Age Class Structure – Current and Projected


Start




Year 70



Legend

 HCA boundary

Stand Age

 0-25

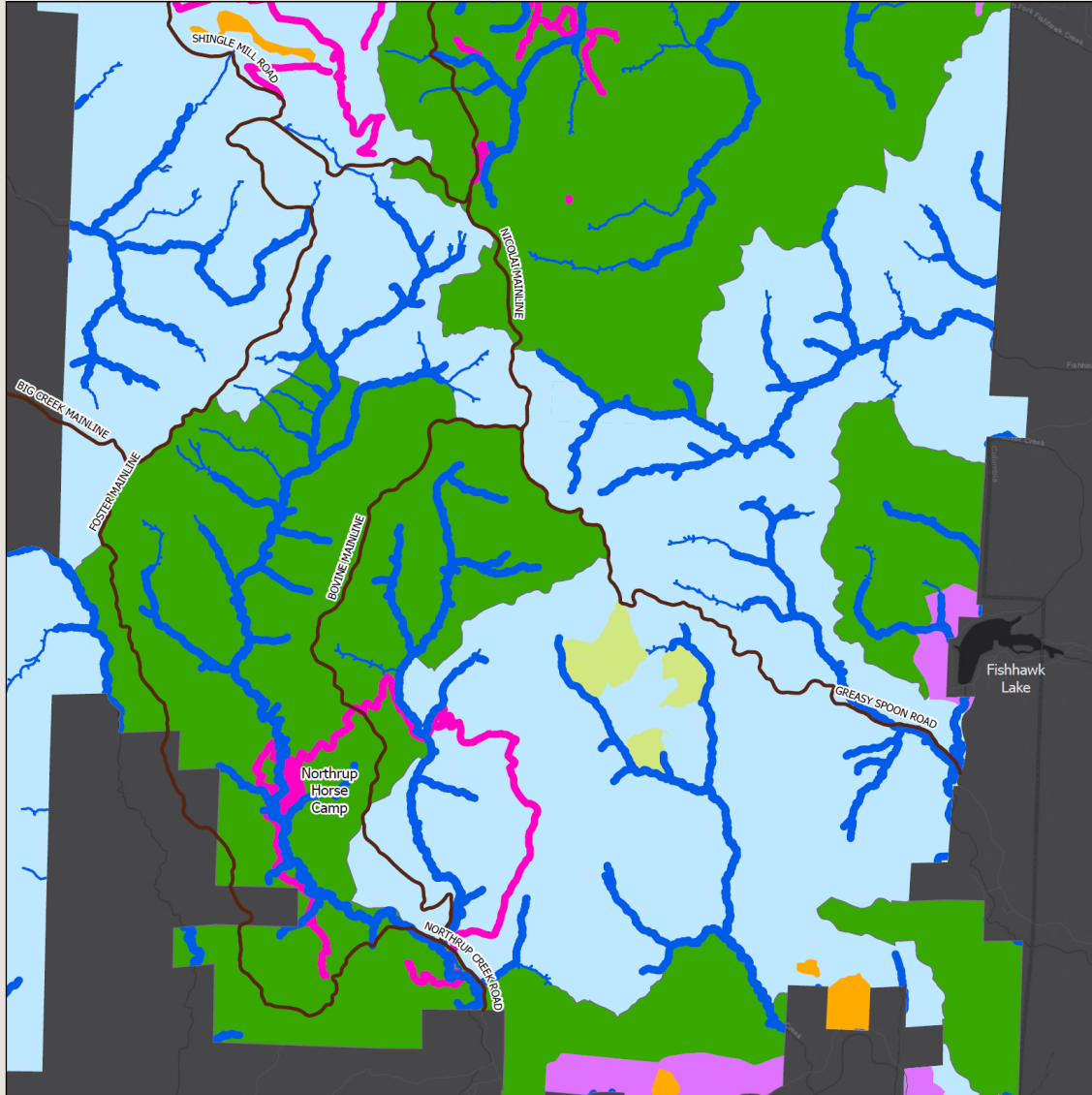
 25-50

 50-75

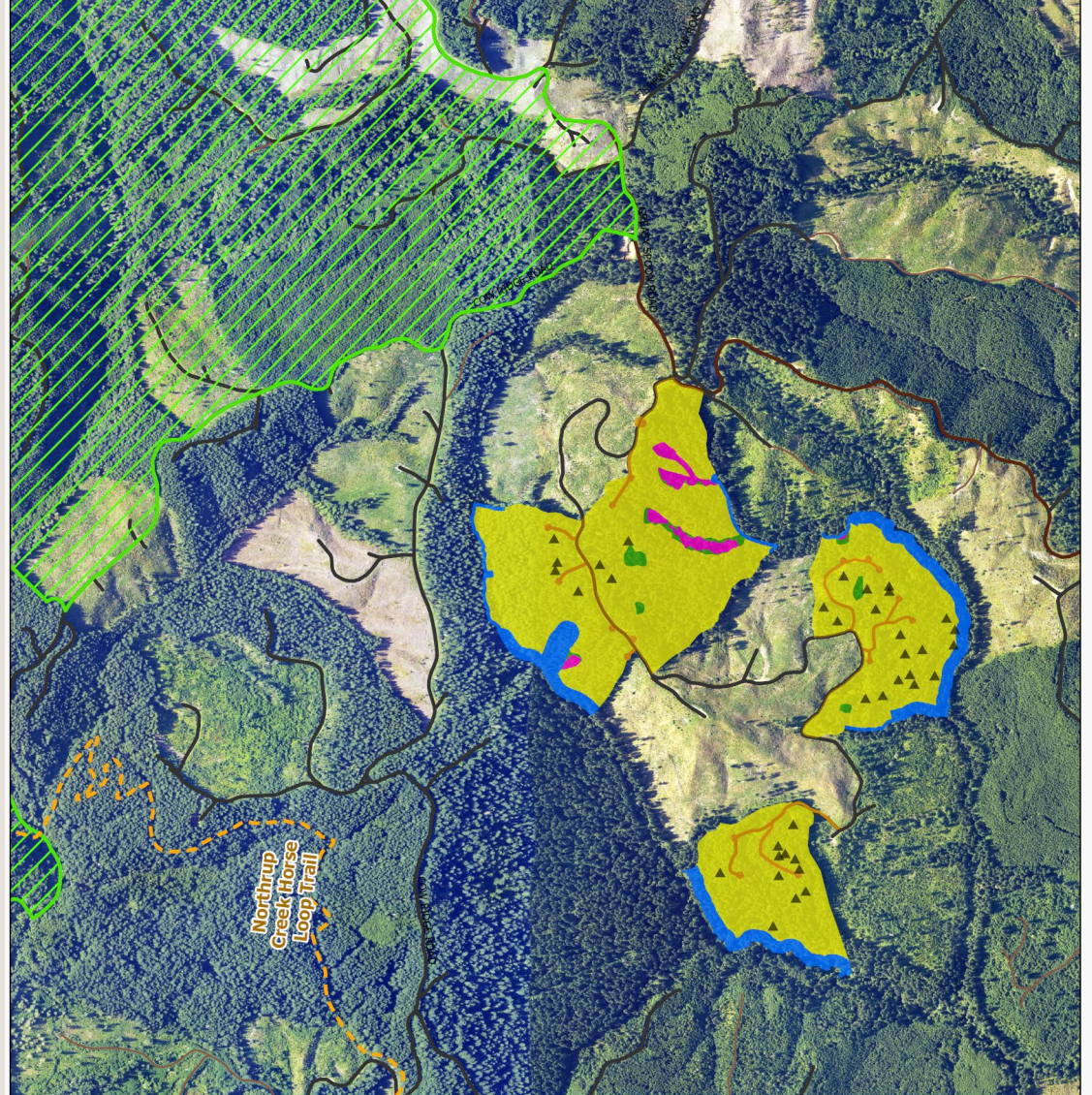
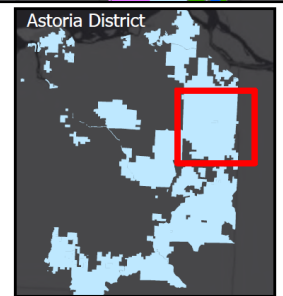
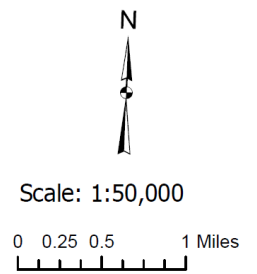
 75-100

 100-125

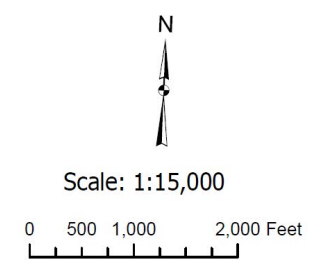
 125+



- Mainline Road
- Habitat Conservation Areas
- Draft Riparian Conservation Areas
- Recreation Areas
- Operationally Limited Areas
- Visual Areas
- Timber Sale
- ODF Managed Lands



- ▲ Wildlife Trees
- Clearcut
- - - Non-Motorized Trail
- New Road Construction
- All weather Road
- No Harvest Riparian
- Mainline Road
- Existing Road ROW
- Dirt Road
- No Harvest Green Tree Retention
- No Harvest Inner Gorge
- ▤ Habitat Conservation Area



Other HCP Commitments

- Legacy Retention
- Spotted Owl Dispersal Habitat
- Barred Owl Management
- Fish Passage
- Aquatic Restoration
- Transportation and Trail Systems



HCP Monitoring and Reporting – Compliance

- HCA design and management
- Leave tree strategies outside HCAs
- Stay-ahead provision
- Barred owl removal activities
- Avoidance and minimization measures
- Riparian buffer management
- Aquatic restoration activities
- Fish passage barriers
- Roads and trails



HCP Monitoring and Reporting – Effectiveness

- Habitat growth and response to restoration activities
- Species status and response to habitat restoration
- Efficacy of barred owl management activities
- Harvest effects on OSS and RTV
- Stream temperature and turbidity trends



Plan Comparison – Old Forests

2010 NW FMP

2026 Draft FMP/HCP

Desired Future Condition Complex - 35% (214,063 acres)

HCAs – 43% (260,422 acres)

Management focus = developing complex structure in young forests

Management focus = developing old forest habitat

Harvest Limitations in mapped DFC Complex – delayed harvest of current Old Forest Structure

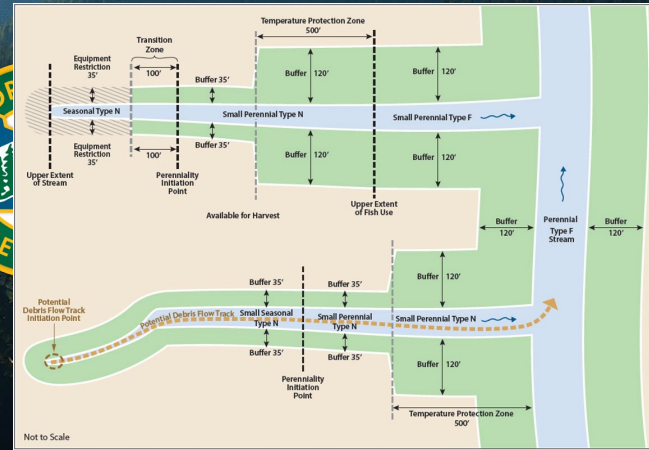
Harvest Limitations in HCAs – 75,000 ac over 30 years

Shifting Mosaic with Terrestrial Anchors

Relatively fixed over 70 years

Plan Comparison – Riparian Buffers

Stream Type	2010 NW FMP	2026 Draft FMP/HCP
Type F	100'+	120'
Type N Large, Medium	100'+	120'
Type N Small	25'	35'
Seasonal N PDFT, HE	25'	35'
Process Protection Zones	None	120' (Small N), 35' (PDFT, HE)
	No Harvest within 25'	No Harvest



Plan Comparison – Legacy Retention

	2010 NW FMP	2026 Draft FMP/HCP
Live Trees	5 trees/acre, Landscape scale	2 trees/acre, Harvest Unit scale
	Riparian buffers count	RCAs do not count
	No emphasis	Emphasis on large, old, diverse
	No requirement to leave again	Leave through rotations
Snags	2 hard snags/acre	2 hard snags/acre, and retain all existing legacy snags
Downed Wood	Minimum 600 cubic feet/ac hard logs	Minimum 600 cubic feet/ac hard logs, and retain all existing legacy logs

Plan Comparison – Other Resources

- Roads and Trails
- Resilience to Climate Change
- Carbon
- Tribal Engagement
- REI
- Adaptive Management



Oregon[™]
STATE FORESTS
Our COMMON GROUND

BOF FMP Performance Measures

- Adaptive Capacity of Forests
- Aquatics & Riparian Resources
- Carbon Sequestration & Storage
- Division Finances
- Economic Opportunities
- Financial Support for Counties
- Habitat Elements for Wildlife
- Harvest & Inventory
- Recreation, Education, & Interpretation Opportunities
- Transportation
- Tribal Cultural Resources

Federal and State Laws

Other Laws

- Forest Practices Act / Stewardship Agreement
- Clean Water Act
- Clean Air Act
- Endangered Species Act
- Forest Land Management Classification System
- OAR Smoke Management

FMP

- Guiding Principles
- Management Approach
- **Goals and Strategies**
- Guidelines

Supporting Implementation Documents (Standards/Requirements)

WOSF HCP	Operational Policies	Adaptive Management Plan
BOF Policy <i>CCCP / Vision for Oregon</i>	Performance Measures	Modeling

Implementation Plans
(mid-term objectives)

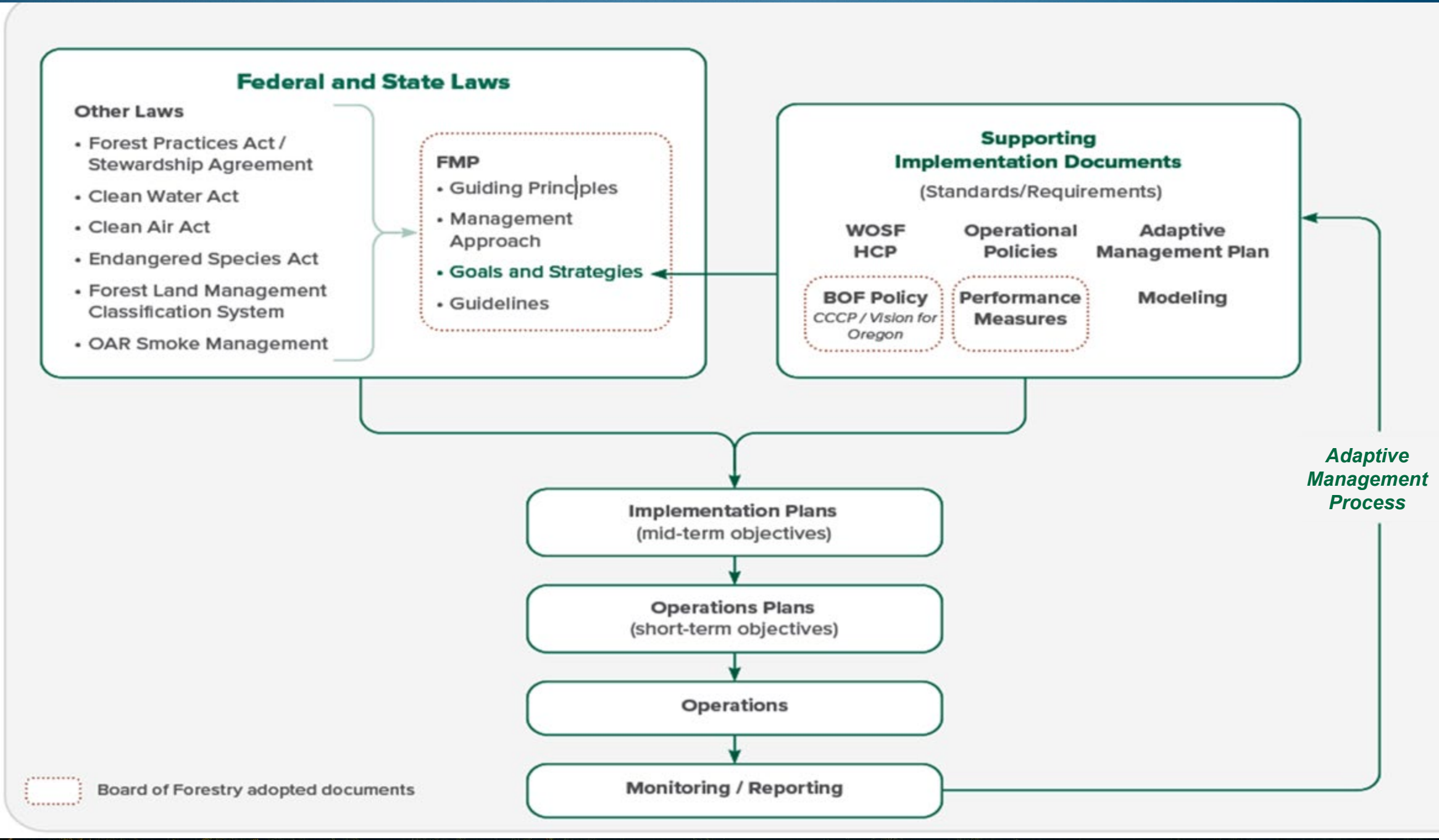
Operations Plans
(short-term objectives)

Operations

Monitoring / Reporting

Adaptive Management Process

 Board of Forestry adopted documents



Decision Authority and Revision Guidelines

Task	Authority
Approve FMP and performance measures and requests Approve FMP/performance measure revisions	Board of Forestry
Approve IPs and major revisions to FLMCS	State Forester
Approve Operational Policies specific to the State Forests Division	State Forests Division Chief
Approve minor revisions to FLMCS	Area Director
Approve and implement OPs	District Forester



Next Steps



Oregon[™]
STATE FORESTS
Our COMMON GROUND

Discussion & Questions



OregonTM
STATE FORESTS
Our COMMON GROUND