

Oregon PFA Aquatic HCP

Biological Goals and Objectives & Effectiveness Monitoring
Adaptive Management Program Committee & Independent Research and Science
Team Joint Meeting

April 13, 2026

Jennifer Weikel—HCP Coordinator





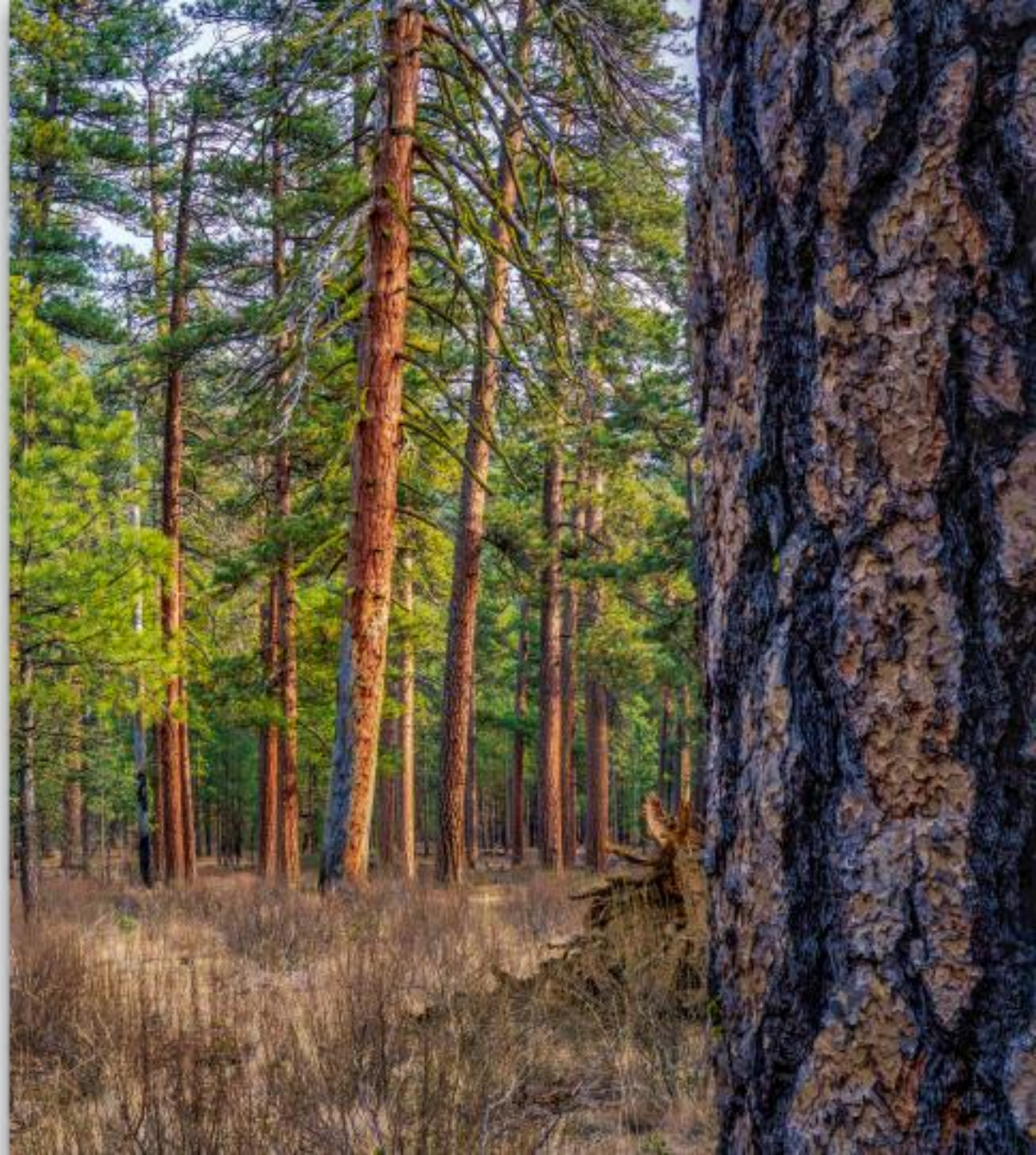
Presentation Overview

- HCP Overview
- Overview of HCP Monitoring Framework
- Biological Goals and Objectives



HCP Basics

- Mechanism for ESA Compliance
- Agreement between applicant and federal service(s)
- Results in issuance of incidental take permit(s)





Programmatic HCP

- State-wide
- Multiple covered species
- Tied to regulatory framework
- Applies to multiple covered parties—from small landowners to large companies



A Programmatic HCP

Agreement between ODF and Federal Services (NMFS & USFWS)

ODF administers Forest Practices Act

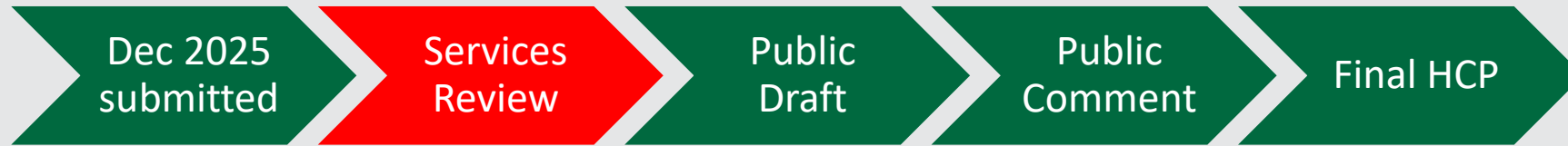
Covered landowners receive regulatory assurances




HCP Framework



Where are we now?



December 2027

 = ODF

 = Services

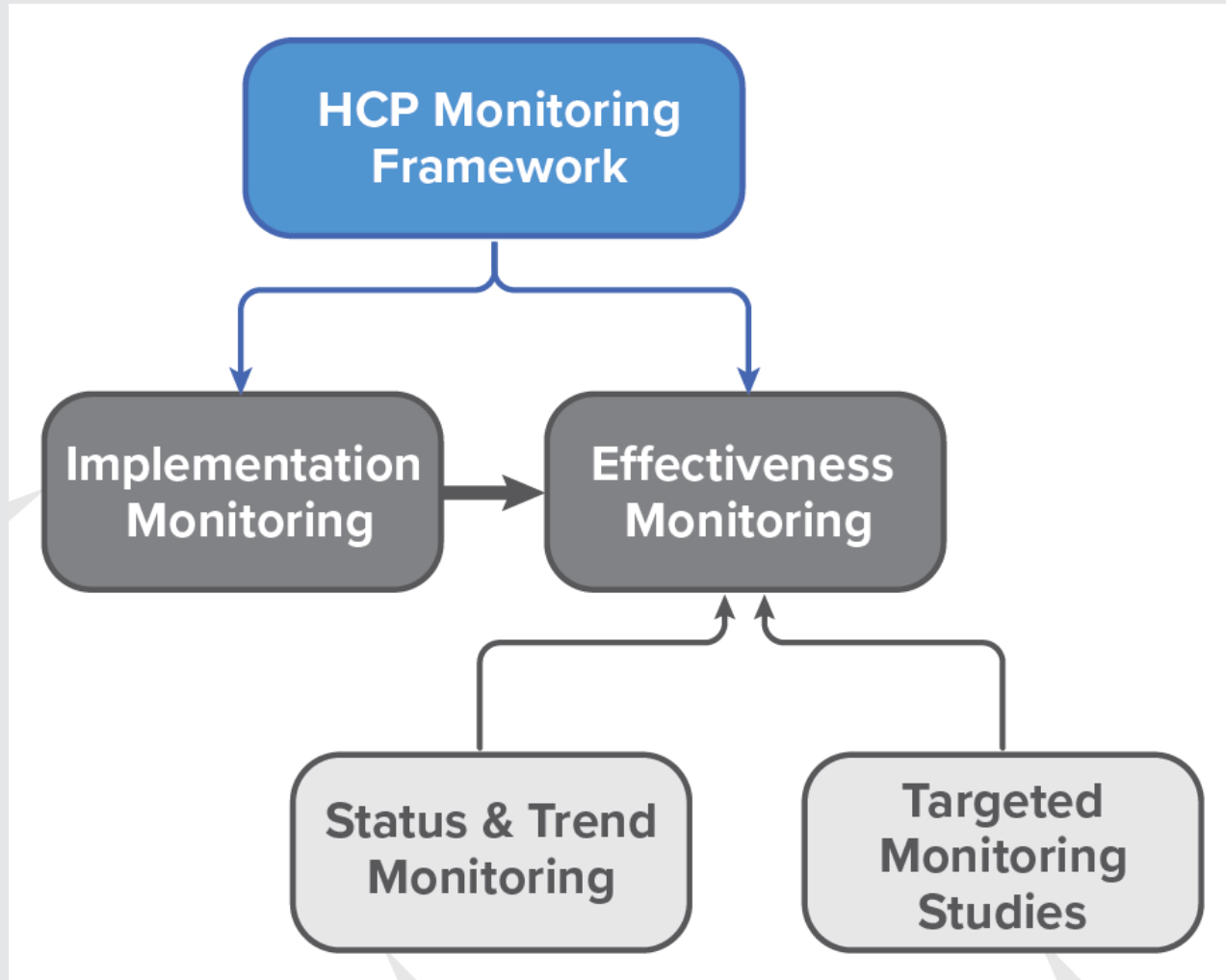


A photograph of a stream with a rocky bank and fallen logs. The stream is calm, reflecting the surrounding greenery. The bank is composed of many small, smooth stones. Several large, weathered logs are scattered along the bank, some partially submerged in the water. The background is a dense forest of evergreen trees.

Cool, clean, connected, and complex habitats for covered species



Monitoring Framework



Two Key Questions to Answer

To what degree are conservation measures being implemented on the landscape?



- Enforcement Tracking
- Compliance monitoring

How effective are the conservation measures at making progress toward meeting the BGOs?



- Effectiveness Monitoring



A photograph of a stream with a rocky bank and several large logs in the water. The water is clear and reflects the surrounding greenery. The logs are scattered along the bank and in the water, creating a complex habitat. The background shows a dense forest of evergreen trees.

Cool, clean, connected, and complex
habitats for covered species



BGO Structure/ Format

- Eastern Georegion & Western Georegion specific
- Species Group-Specific – all, fish, amphibians
- Tied to Conservation Measures/ rule groups
- Tied to pre-identified type of monitoring to track effectiveness



BGO Structure/ Format

- Relates to habitat or components of habitat for covered species
- Not tied to species populations, reproductive fitness, or other aspects of population health such as genetic diversity
 - Why—this HCP is about providing habitat for species
 - Forest activities affect habitat
 - Forest activities are what is under ODF's control
 - ITPs will be tied to habitat—not species numbers





Goals, Objectives, and Subobjectives

Overarching Biological Goal: Forest practices in the Western Oregon georegion support the persistence and recovery of the covered fish and amphibian species by providing clean, cool, connected, and complex habitats.

Objective 1: Forest practices in the Western Oregon georegion near streams minimize sediment delivery to support the needs of the covered species.

1.1: Forest practices in the Western Oregon georegion near streams minimize sediment delivery to support the needs of the covered species by establishing no-harvest riparian management areas (RMAs) along the full length of all fish-bearing streams and all large and medium non-fish-bearing perennial streams throughout the permit term. (Group 1: Implementation Monitoring)



BGOs: Four Categories

Group 1: Implementation Monitoring

- Applies to all BGOs

Group 2: Status and Trend Monitoring

- Simple conservation measures with gaps in the literature
- Conservation measures that address chronic processes

Group 3: Targeted Monitoring Studies

- Conservation measures with clear gaps in the literature

Group 4: Targeted Monitoring Studies After Triggering Events

- Conservation measures with multiple components related to episodic events



BGOs: Group 1-only examples

1.1: Forest practices in the Western Oregon georegion near streams minimize sediment delivery to support the needs of the covered species by establishing no-harvest riparian management areas (RMAs) along the full length of all fish-bearing streams and all large and medium non-fish-bearing perennial streams throughout the permit term. (Group 1: Implementation Monitoring)

4.2: Forest practices in the Western Oregon georegion maintain in-stream connectivity and fish passage to support the needs of the covered fish species by requiring new and existing permanent water crossings on fish streams to meet standards under OAR 629-625-0320 throughout the permit term. (Group 1: Implementation Monitoring)



BGOs: Group 2 Examples

2.2: Forest practices in the Western Oregon georegion near streams maintain shade to support the stream temperature needs of the covered fish species by establishing no-harvest RMAs along small non-fish-bearing perennial streams for a distance upstream of the junction with a fish-bearing stream throughout the permit term. (Group 1: Implementation Monitoring; Group 2: Status and Trend Monitoring)

1.7: Road runoff directly to streams is minimized by implementation of the Forest Road Inventory and Assessment (FRIA) through 2044 to reduce hydrologic connectivity throughout the permit term. (Group 1: Implementation Monitoring; Group 2: Status and Trend Monitoring)

1.8: Road runoff directly to streams is minimized by implementation of standards for new road construction to reduce hydrologic connectivity throughout the permit term. (Group 1: Implementation Monitoring; Group 2: Status and Trend Monitoring)



BGOs: Group 3 Examples

3.3: Forest practices in the Western Oregon georegion near streams maintain shade to support the stream temperature needs of the covered amphibian species by establishing R-ELZs on small non-fish-bearing perennial streams for a distance within and/or upstream of the no-harvest RMA during all timber harvest throughout the permit term. (Group 1: Implementation Monitoring; Group 3: Research Studies)

11.1: Forest practices in the Eastern Oregon georegion near streams maintain aquatic connectivity in riparian areas to support the needs of the covered fish species by extending RMAs around seeps, springs, side channels, and stream-associated wetlands throughout the permit term. (Group 1: Implementation Monitoring; Group 3: Targeted Monitoring Studies)



BGOs: Group 4 Examples

1.4: Slope retention areas (SRAs) in the Western Oregon georegion minimize episodic sediment delivery to fish-bearing streams to support the needs of the covered species throughout the permit term. (Group 1: Implementation Monitoring; Group 4: Targeted Monitoring Studies After Triggering Events)

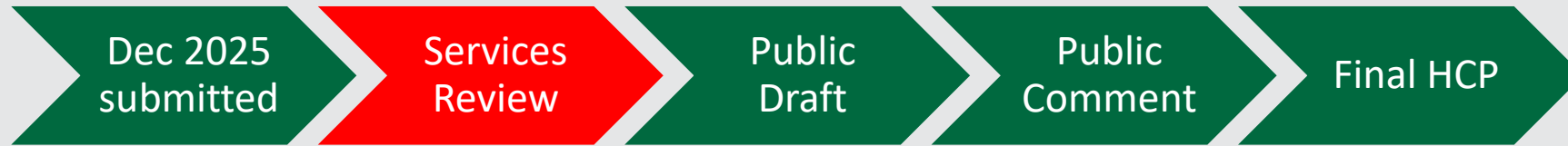
1.11: Roads are not a significant source of episodic sediment delivery to streams by implementation of standards for new road construction throughout the permit term. (Group 1: Implementation Monitoring; Group 4: Targeted Monitoring Studies After Triggering Events)

Why do we need an Effectiveness Monitoring Strategy?


- This is a large, complicated HCP
- There is a lot to track
- Services will require ODF to document that Conservation Measures are achieving BGOs
- Need to figure out how to accomplish this all over the permit term—and what should be prioritized



Where are we now?



December 2027

 = ODF

 = Services



Questions?

