



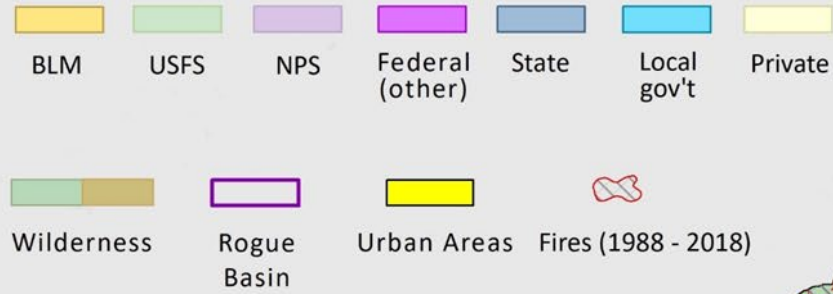
ROGUE FOREST PARTNERS



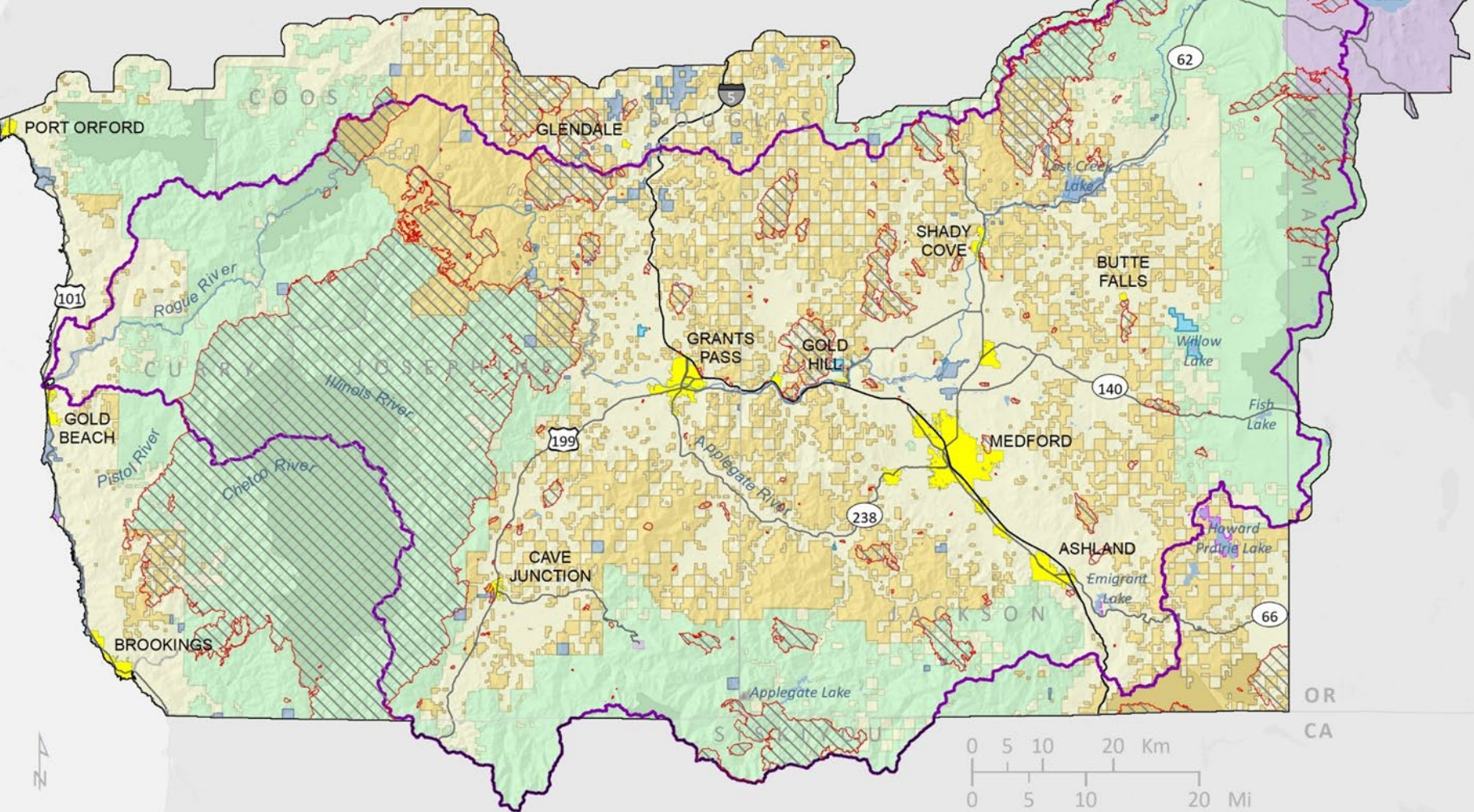
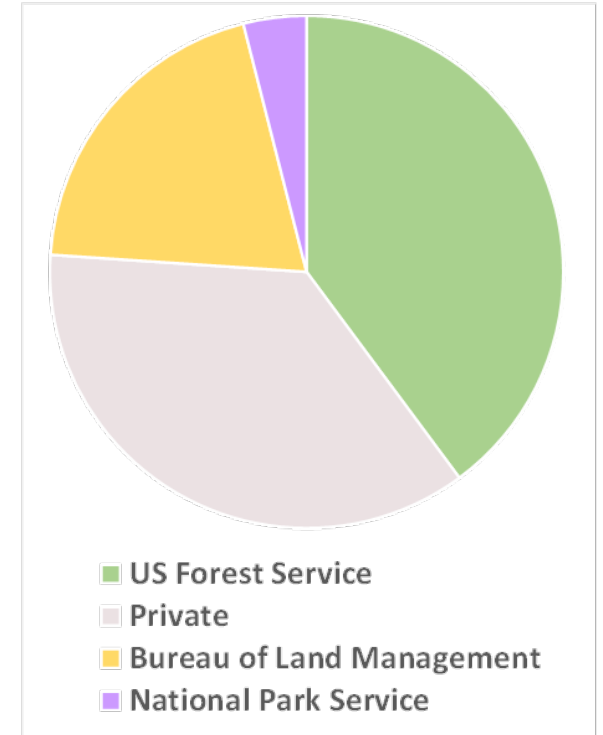
Core Partners

Other Partners Engaged

- Confederated Tribes of the Grand Ronde
- Confederated Tribes of the Siletz Indians
- Illinois Valley Fuels Resource Operations Group
- Applegate Partnership Watershed Council
- Jackson County Soil & Water Conservation District
- Illinois Valley Community Development Organization
- Sustainable Northwest
- Tolowa Dee-ni' Nation
- Klamath Siskiyou Wildlands Center
- Oregon Dept. of Fish & Wildlife
- Siskiyou Upland Trails Association
- American Forest Resource Council



Rogue Basin 4.6 million acres



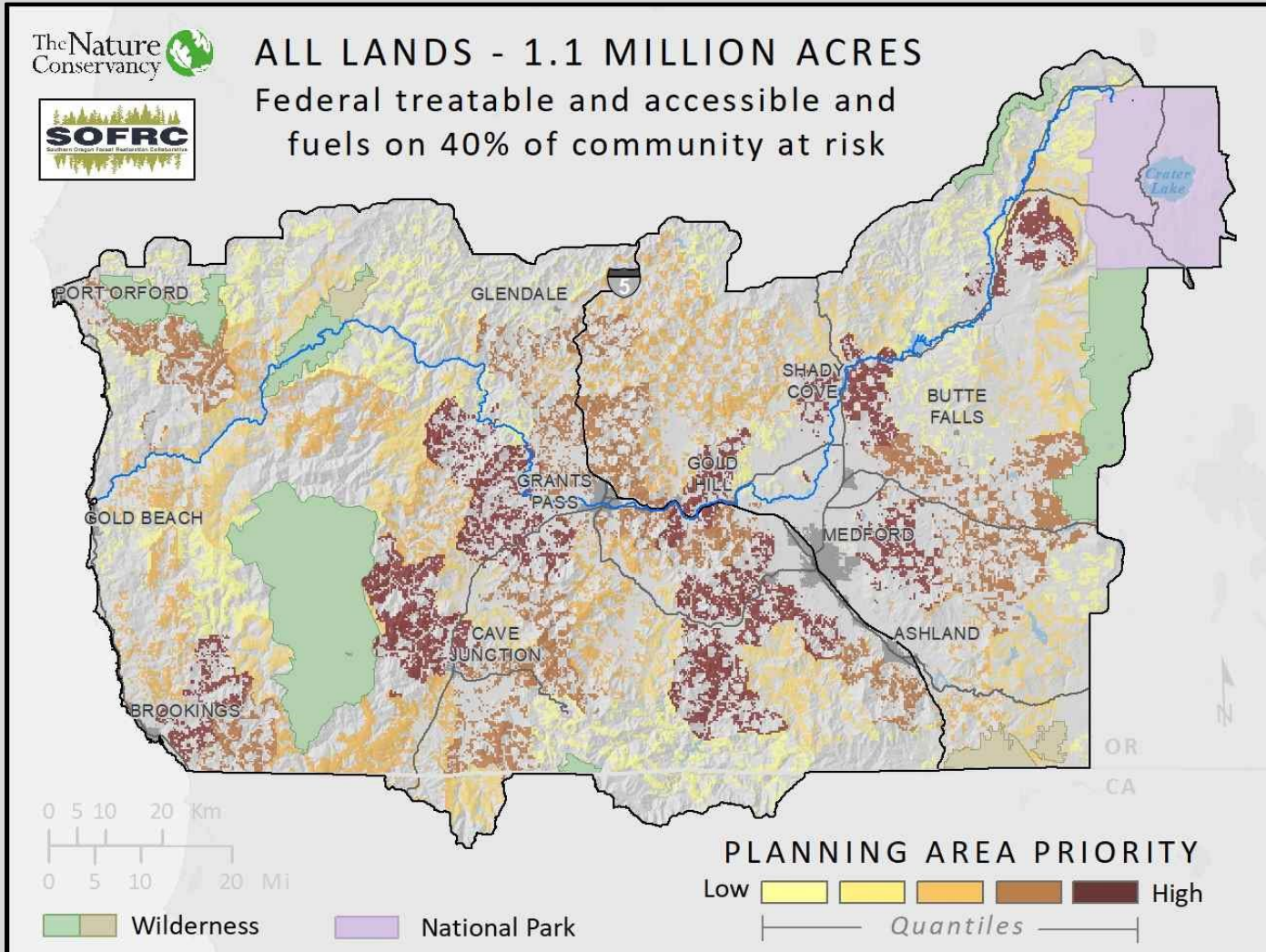
Metlen et al. 2021. Integrating forest restoration, adaptation, and proactive fire management: Rogue River Basin Case Study. Canadian Journal of Forest Research 51:1292-1306. <https://doi.org/10.1139/cjfr-2020-0480>



Partners in Regional Planning



Rogue Basin Strategy



4.2 million forested acres

Part of Rogue Valley Integrated Fire Plan

Initial Entry 20-years

- 1.1 million acres
- 55,000 ac/year
- 25% of landscape
- 40% of community at risk

Maintenance (can include wildfire)

- 100 thousand acres/year

Reduce risk by 70%

- 50% risk reduction for communities
- 47% risk reduction for core spotted owl habitat
- 60% risk reduction for late seral forest
- 87% risk reduction for industrial timber

Rogue Basin Strategy – Connecting Ideas to Actions

Forest Restoration Objectives

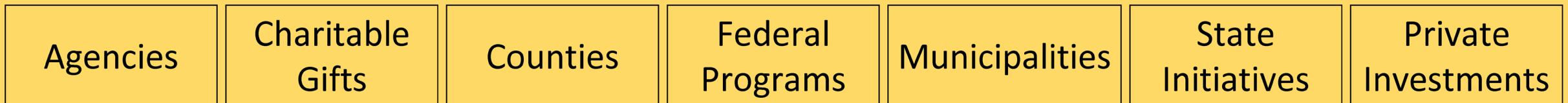
1. Resilient landscapes (forest health, wildlife, songbirds)
2. Wildfire risk and management
3. Public knowledge and support
4. Capacity for planning, implementation, monitoring, outreach/engagement
5. Improved socioeconomic conditions and workforce



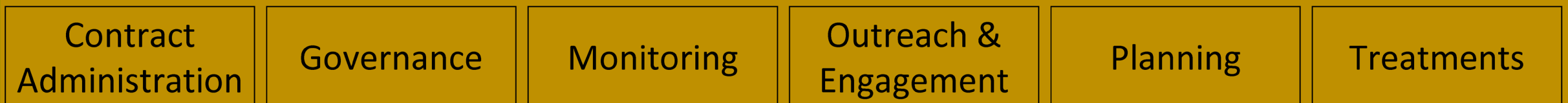
Project Areas



Funding Sources



Tasks



Rogue Forest Partners

Working together for forests and communities



<https://rogueforestpartners.org/>

