

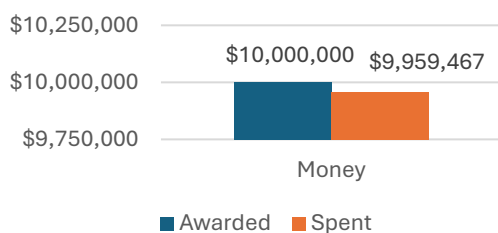
Landscape Resiliency Program

Activities and outcomes

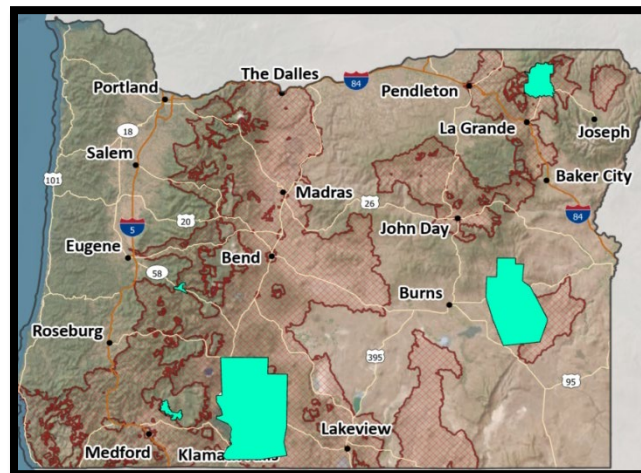
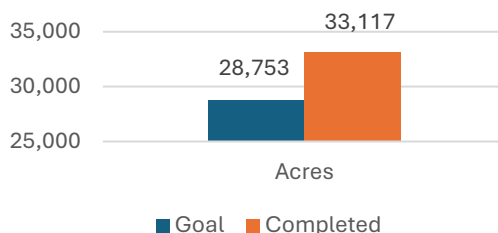
Fact Sheet 1 – July 2025

This is the summary report from the Oregon Department of Forestry (ODF) on the Landscape Resiliency Program (LRP) for the 2023-2025 Legislative Biennium. There has been significant work to mitigate wildfire risk on the landscape and build resiliency in our forests. All projects are wrapped up for the most recent funding cycle (\$10,000,000 awarded). This report shares the program's collaboration and landscape approach that has successfully been a primary program for the 20-year Landscape Resiliency Strategy and continues efforts to proactively protect the people and lands of Oregon.

Funding



Footprint Acres Treated



Map of work boundaries for LRP projects 2023-2025

Project name	Awardee	Award amount	Location
Expanding wildfire risk reduction	High Desert Partnership	\$3,800,900	Southeast Oregon
Klamath Tribes FR & fire resiliency	Klamath Tribes	\$1,992,852	Southern Oregon
Northern blues	Wallowa Resources/ODF	\$904,046	Northeast Oregon
Oakridge-Westfir landscape resiliency	South Willamette Solutions	\$1,053,800	West Oregon
River	ODF- SWO	\$2,248,402	Southwest Oregon

TOTAL LRP ACCOMPLISHMENTS FOR THE 2023-2025 BIENNIUM:

Total Fuels Mitigation:	Rx Burning	Meetings:	Herbicide Treatments on Invasives:	Planning Tools:
33,117 Footprint Acres treated with various Fuels Mitigation Activities	4,598 Activity Acres	10 meeting with partners & 1 Demonstration of Rx Fire for Communities	17,600 Activity Acres	Collaborative Meetings, Monitoring Data, Rapid Assessment Tool, Education on Rx Burning



Photo Provided by Steve Rondeau from the Klamath Tribes Following the 2001 Bootleg Fire.

CASE STUDY of Prescribed (Rx) Fire: Klamath Tribes LRP are doing a significant amount of Rx Fire and thinning fuels reduction on the landscape and have perfected the methods to maintain resiliency. Under the master stewardship agreement (USFS) they performed thinning and Rx burning on former reservation lands prior to the Bootleg fire in 2021 (413,763 acres burned). As seen in the picture adjacent, this work significantly reduced the impacts of the fire when it occurred. These same treatment methods were used in the LRP project this biennium (2023-25). Due to the positive impacts of this work, the Klamath Tribe's Natural Resources Department Director, Steve Rondeau, has continued to implement these strategies effectively, not only under mild/moderate fire weather conditions, but also under extremely low fuel moisture conditions and during rapid wind-driven fire spread that characterized the Bootleg Fire. Maintenance burns will be required to maintain this level of effectiveness.



Photo provided by Ross Ballou (ODF) of River LRP Project

Rx FIRE: 2,828 acres of prescribed fire through the Klamath Tribes project and 1,700 acres in the High Desert Partnership Project were implemented through the Landscape Resiliency Program. Additionally, 70 acres of prescribed fire were used as a demonstration in the town of Butte Falls' Community Forest in the River project. This demonstration will be

developed into a documentary to share in media for expanding understanding and acceptance of Rx Fire on private lands. We expect more Rx Fire will be necessary on the landscape as the need for mitigation of extreme wildfire events increases.

COLLABORATION: The landscape resiliency program provides a unique opportunity for collaboration. With almost \$40 million requested in grant funding by both internal and external entities, a significant amount of work has already been identified on the landscape. To accomplish the \$10 million awarded, collaboration with partners and identifying resource needs at the local level are critical.

This photo shows collaborative work with Natural Resources Conservation Service, Oregon Department of Forestry, Oregon State University Extension, Umpqua National Forest, private forest contractors and consultants and the Soil and Water Conservation District for the Northern Blues LRP project.



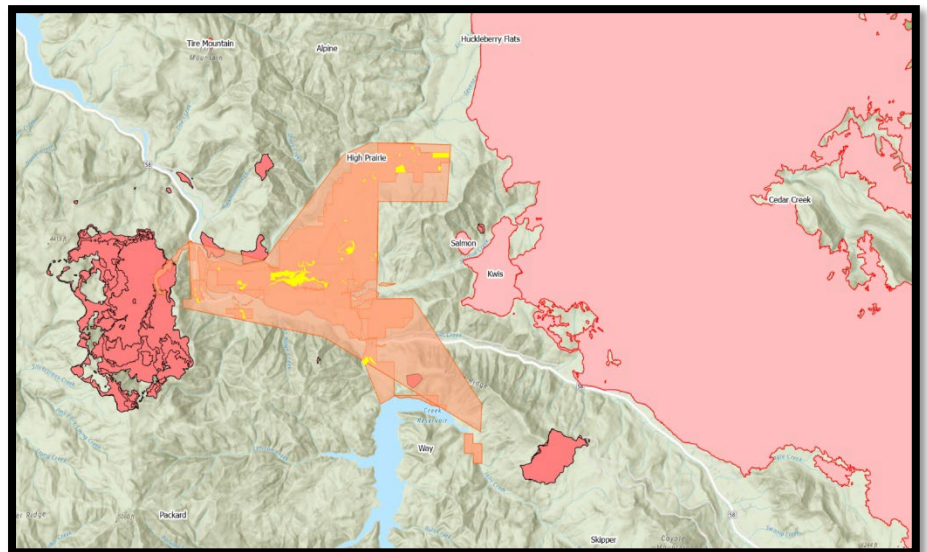
Photo provided from Alyssa Cudmore (Wallowa Resources)

PROJECT SPOTLIGHT:

Oakridge-Westfir LRP project: 341 Footprint Acres of Fuels Treatments expand this project from last biennium, which was 160 acres of shaded fuel breaks along ridgetop roads (Everything in yellow are treatments from 2021-2025 for LRP projects in this area). These communities are continuously exposed to threat from wildfire.

Last Biennium: The LRP project was used as an evacuation level line change between 1 and 2 on the Cedar Creek Fire which gave fire response agencies the ability to focus their effort on other strategic planning for the fire.

Fires: Kwis (Part of Middle Fork Complex): Size: 1,485 acres, Year: 2021; Cedar Creek Fire: Size: 127,311 acres, Year: 2022; Salmon Fire: Size: 135 acres Year: 2023, this was 5 miles east of Oakridge; Willamette Complex Fires South: 23,480 acres, Year: 2024.



THE FUTURE:

The next steps for the Landscape Resiliency Program are to move towards improved cross collaboration for existing programs and connection between projects on the landscape. LRP has the potential for flexibility to fill the gaps where other programs cannot. This program was created due to section 18, chapter 592, Oregon Laws 2021 (previously known as SB762 2021). So far, it has been run by a single staff member, but additional resources will be needed to grow and improve on successes and the significant positive impacts on the landscape. Wildfire is expected to become more prevalent in the landscape in the future, which indicates the need for a continuous stable funding source. The goal is to create opportunities for additional local planning, monitoring, maintenance for longevity, informed decision making and expanding the number and breadth of fire resilient communities and landscapes with each biennium building on the last.