

Presentation to the 2025 Joint Ways and
Means Subcommittee on Human Services

Child Welfare Permanency Budget Review

Aprille Flint-Gerner, Director, ODHS Child Welfare

March 19, 2025

Agenda

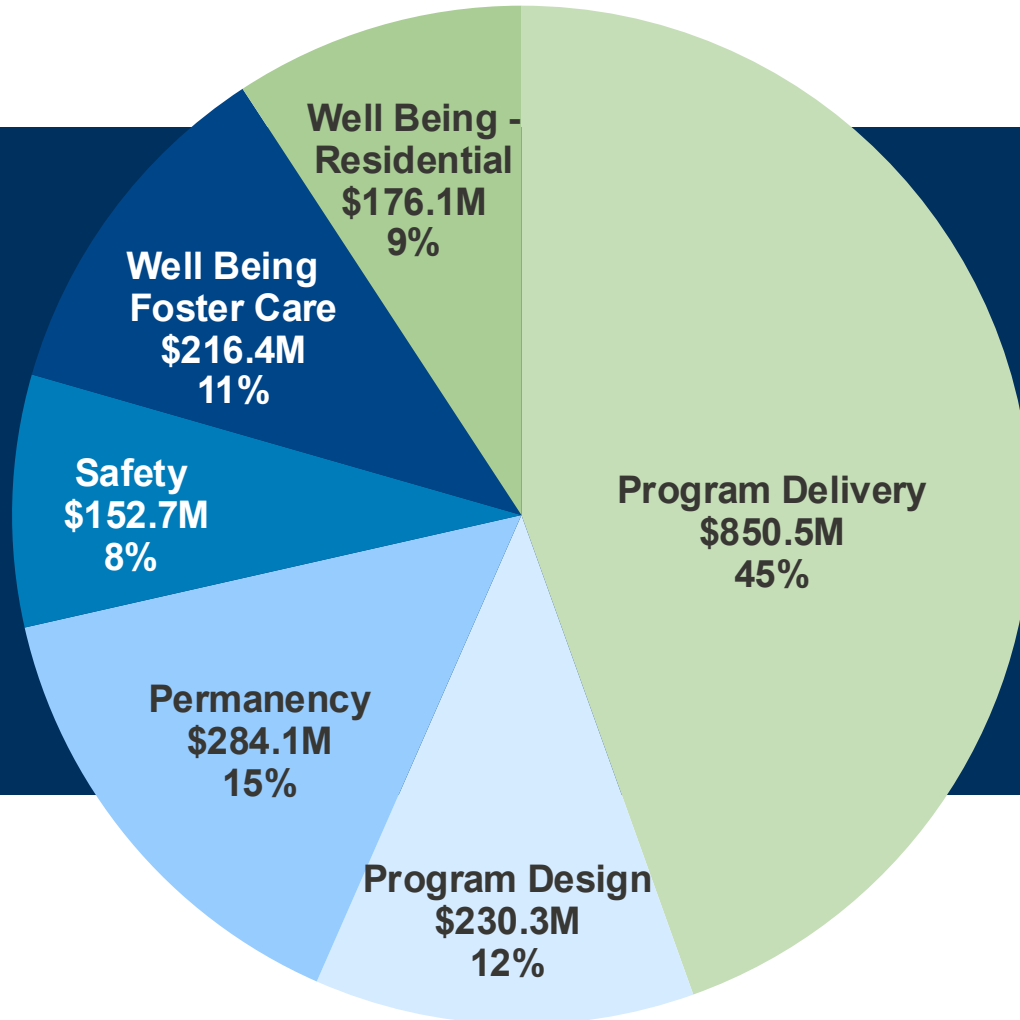
- I. **Budget overview**
- II. Adoption and Guardianship
 - I. Permanency Budget
 - II. Programs
 - III. Outcomes
 - IV. Key issues
- IV. Closing remarks

2025-27 Governor's Budget:

Total Child Welfare budget by Adoption/Guardianship

**Child Welfare
total budget
\$1.9 billion**

**Permanency
budget: \$284.1M y**

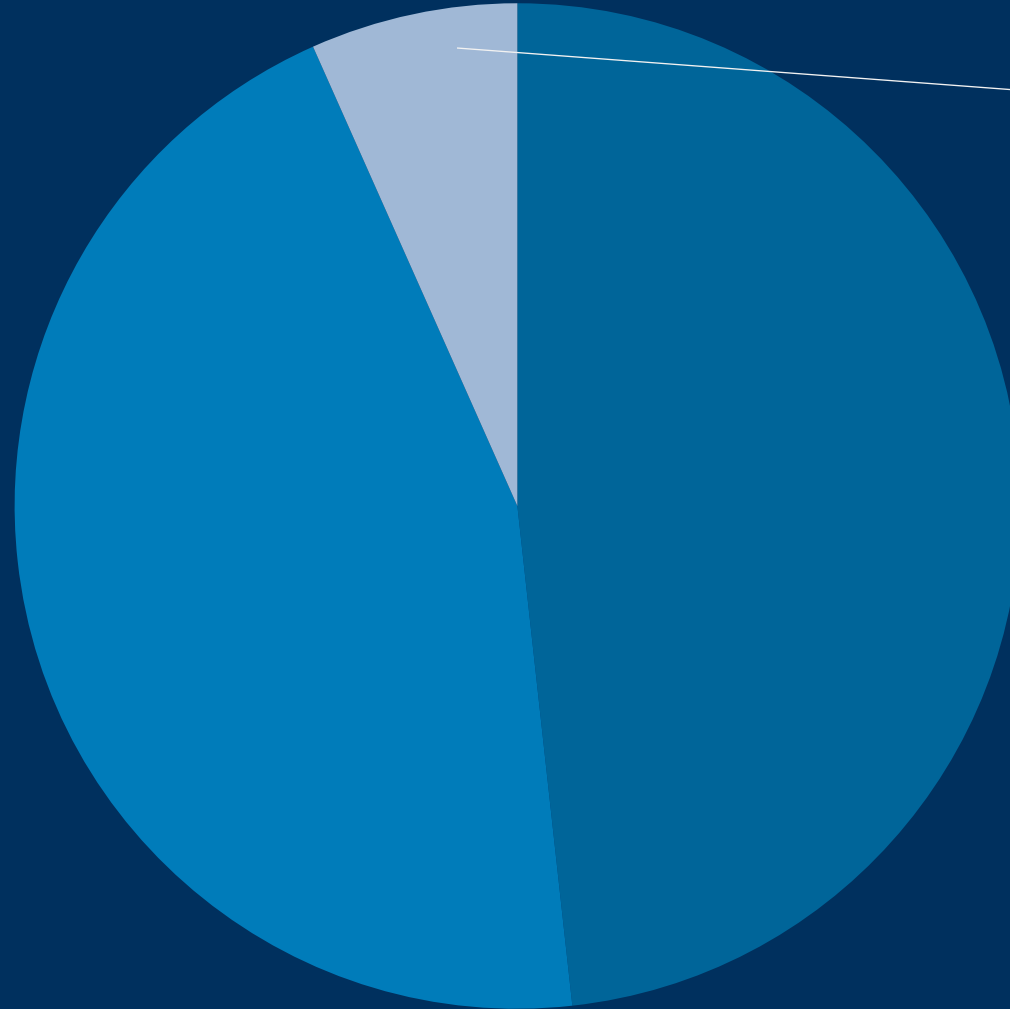


Agenda

- I. Budget overview
- II. Adoption and Guardianship**
 - I. Permanency Budget**
 - II. Programs**
 - III. Outcomes**
 - IV. Key issues**
- IV. Closing remarks

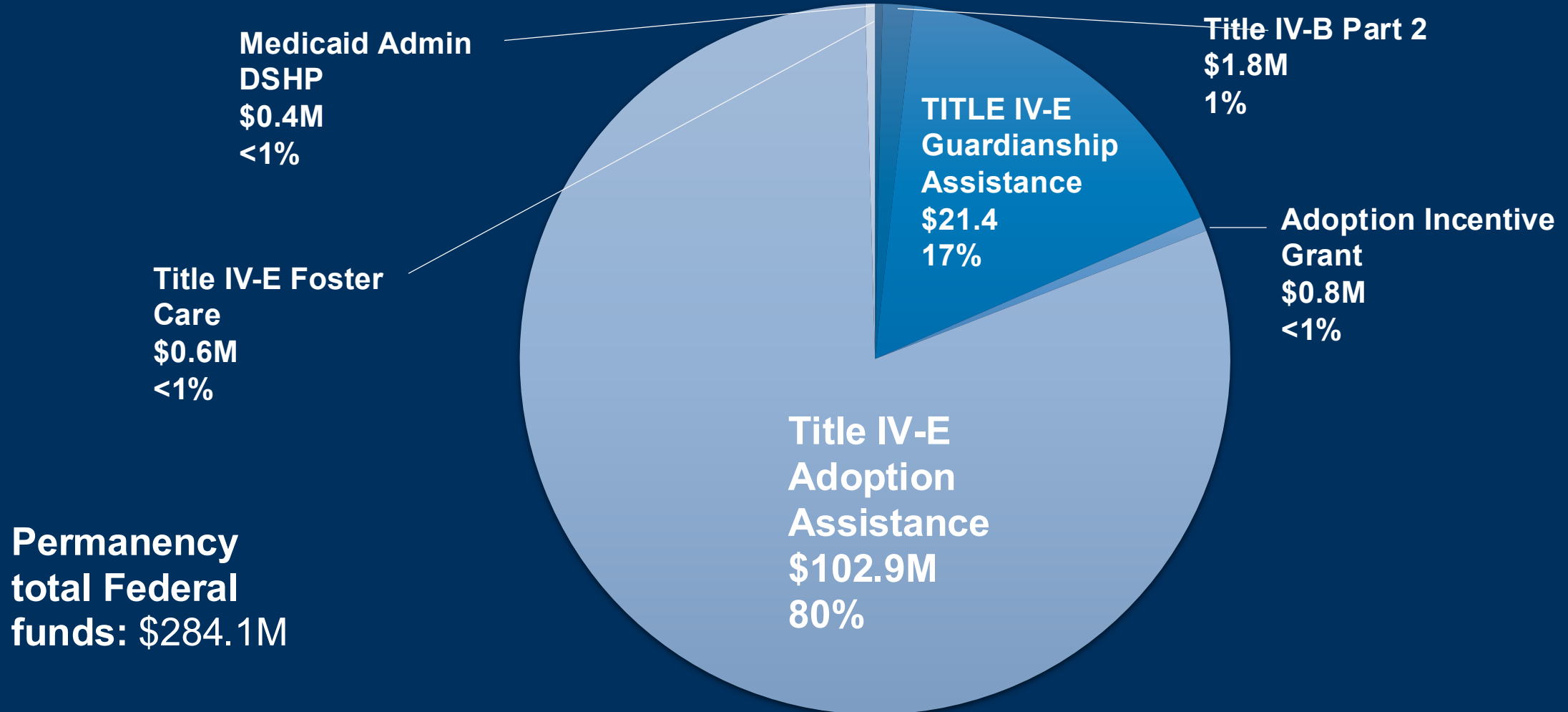
Adoption/Guardianship: Permanency Budget Funding split

**Permanency total
GB funds: \$284.1M**



**Other Funds
\$19.0M
6%**

Adoption Guardianship Services Permanency Budget Federal Funds



Child Welfare Permanency DCRs



**Adoption
Assistance**
\$204.8M

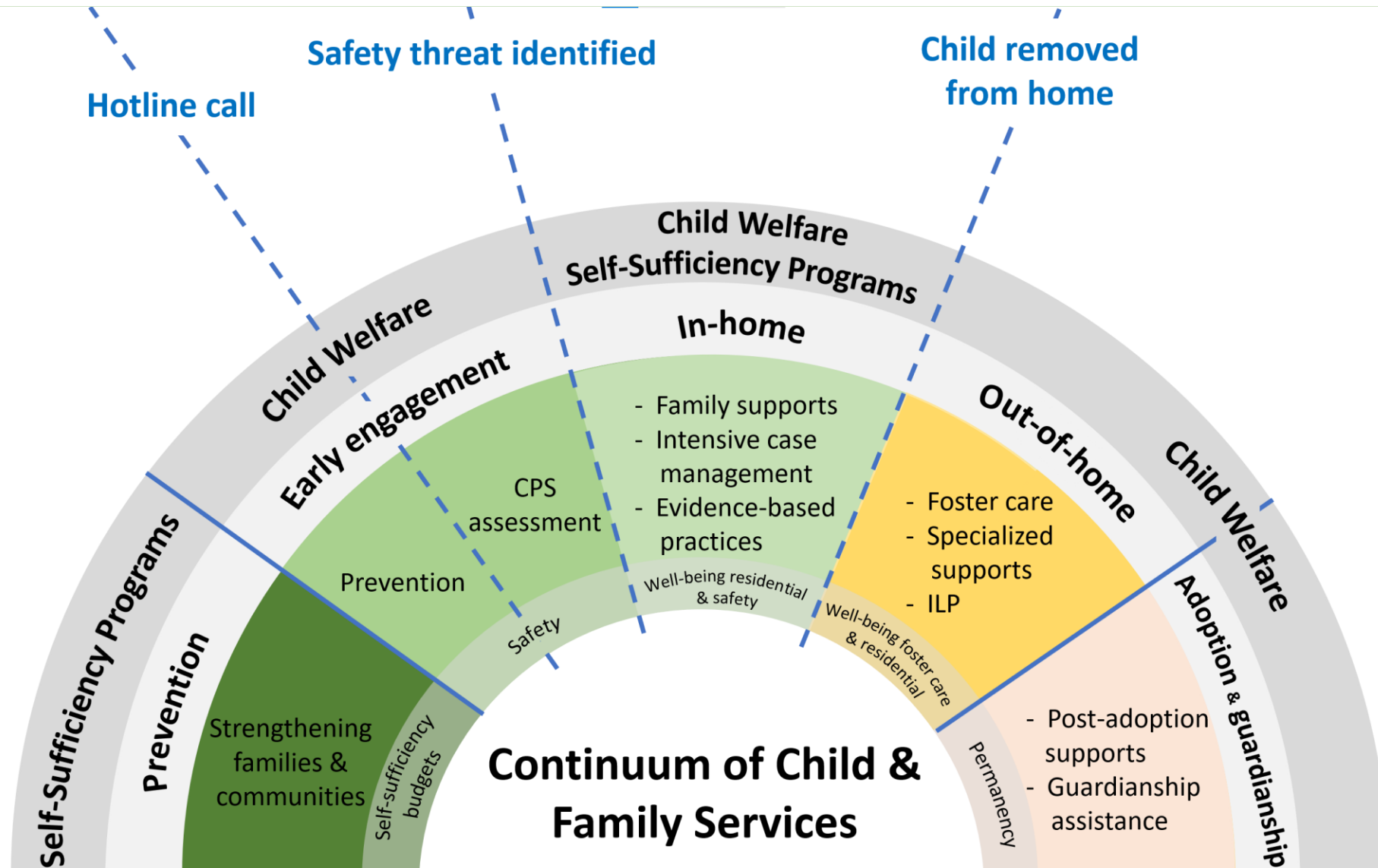
**Guardianship
Assistance**
\$53.2M

**Post Adoption
Services**
\$19.8M

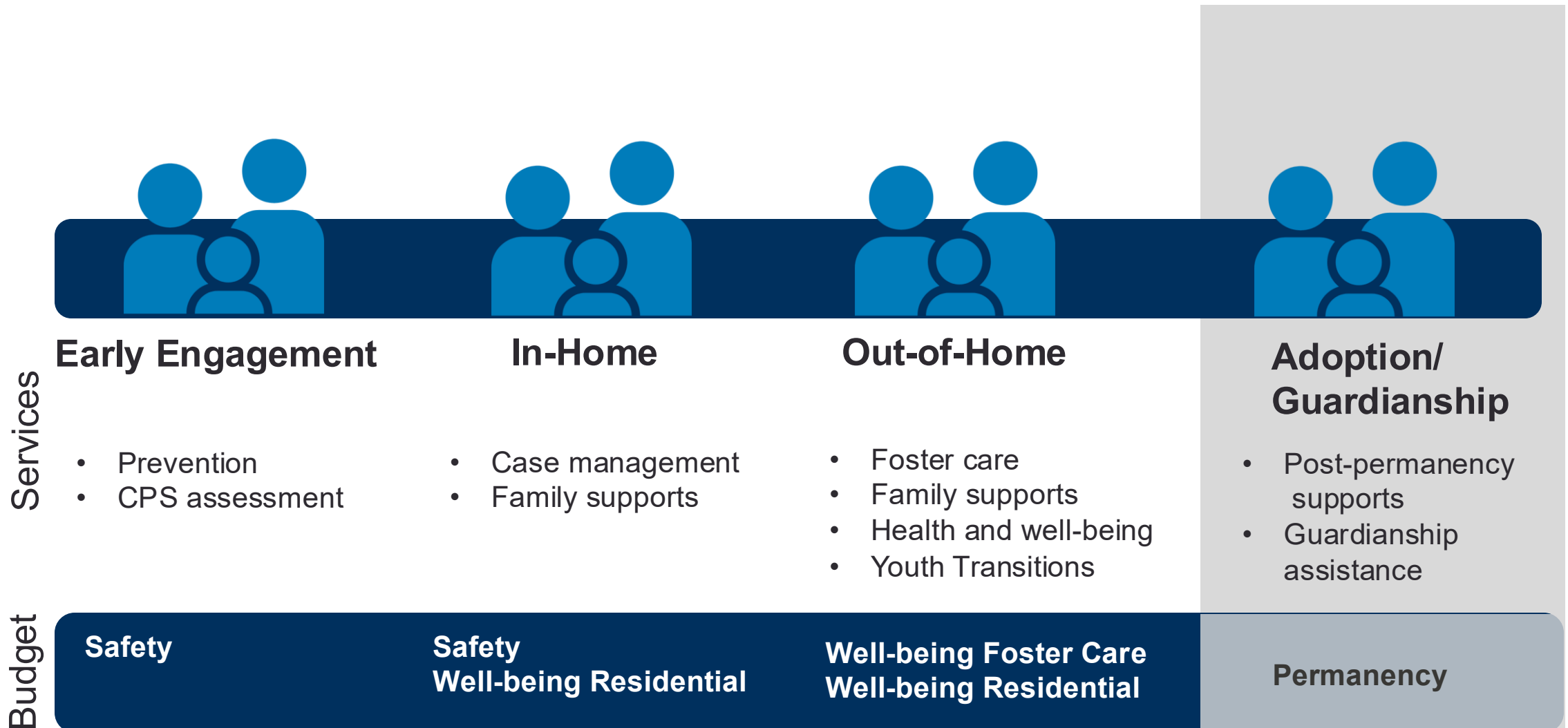
**Contracted
Adoption Services**
\$4.2M

**Adoption
Supports**
\$1.9M

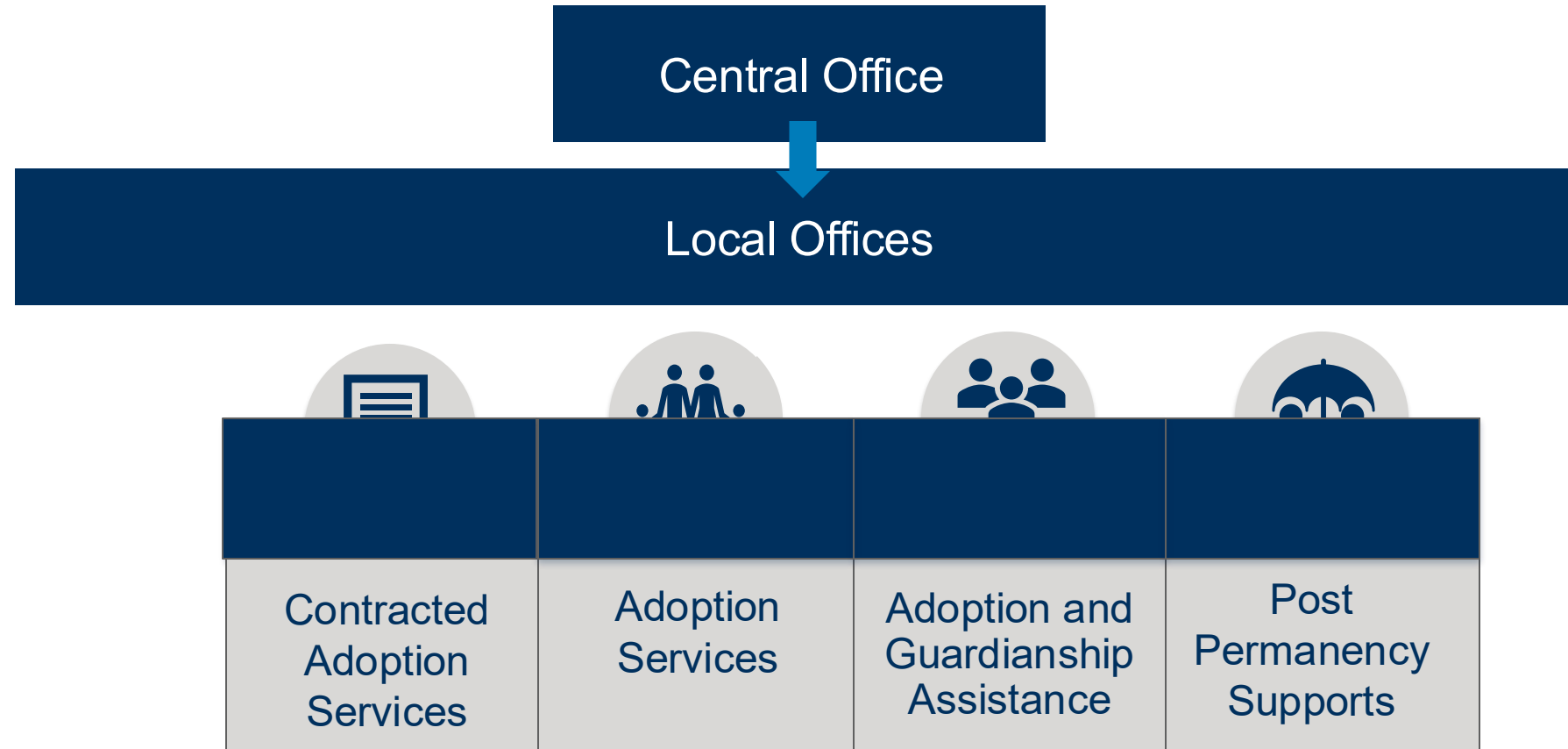
Child Welfare: How we work



Child Welfare Continuum of Services: Adoption/Guardianship



Child Welfare Permanency Services



Child Welfare Permanency Services



Adoption
placement and
supervision
services

Mediation
services



Consultation,
training and
collaboration to
support
completion of
quality and
timely adoptions
(see KPM)



Financial and
medical assistance
to families post
finalization



ORPARC

Family & Individual
services

Education & Training
programs and
equipment

Adoption Search and
Registry

Adoption/Guardianship priorities

Key priorities

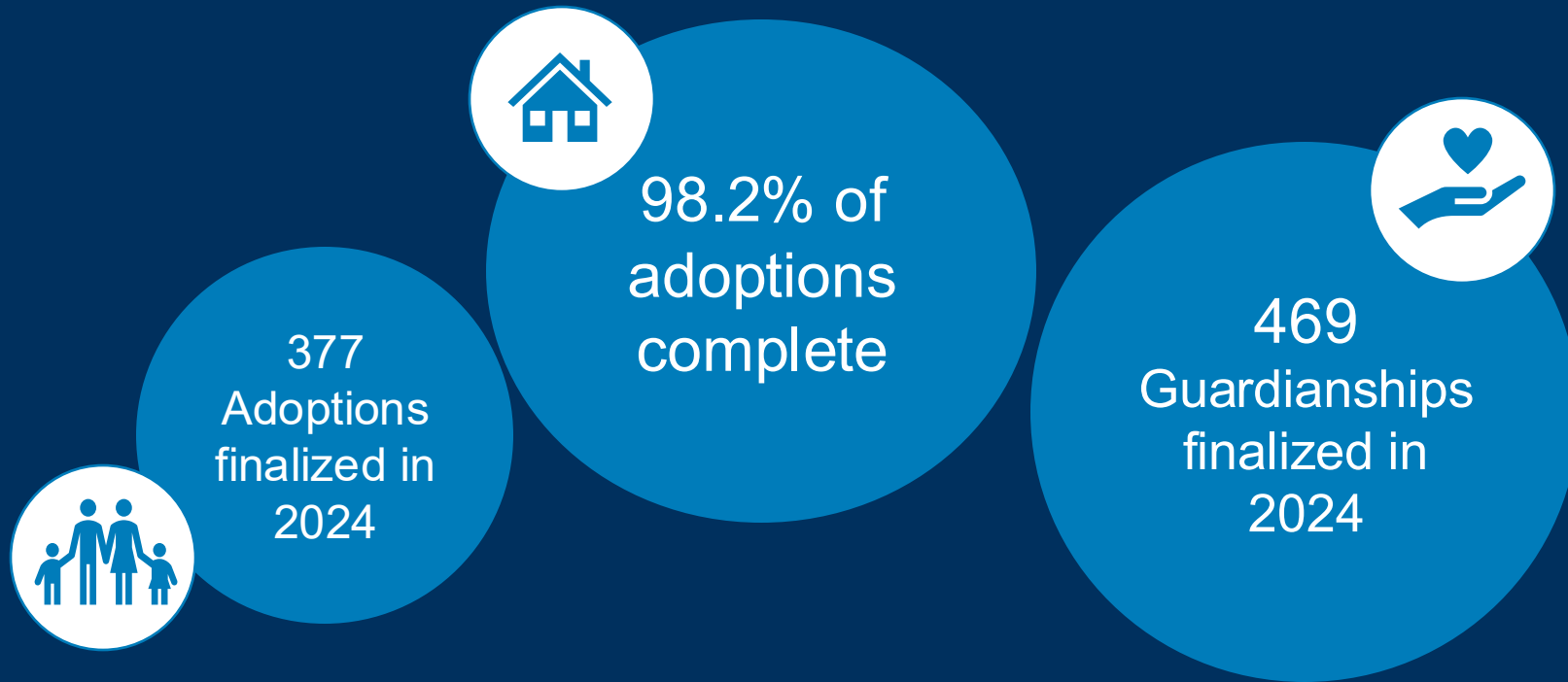
- Legal and relational permanence for all
- Quality placement capacity and services
- Capacity-building for youth with complex needs

Key challenges

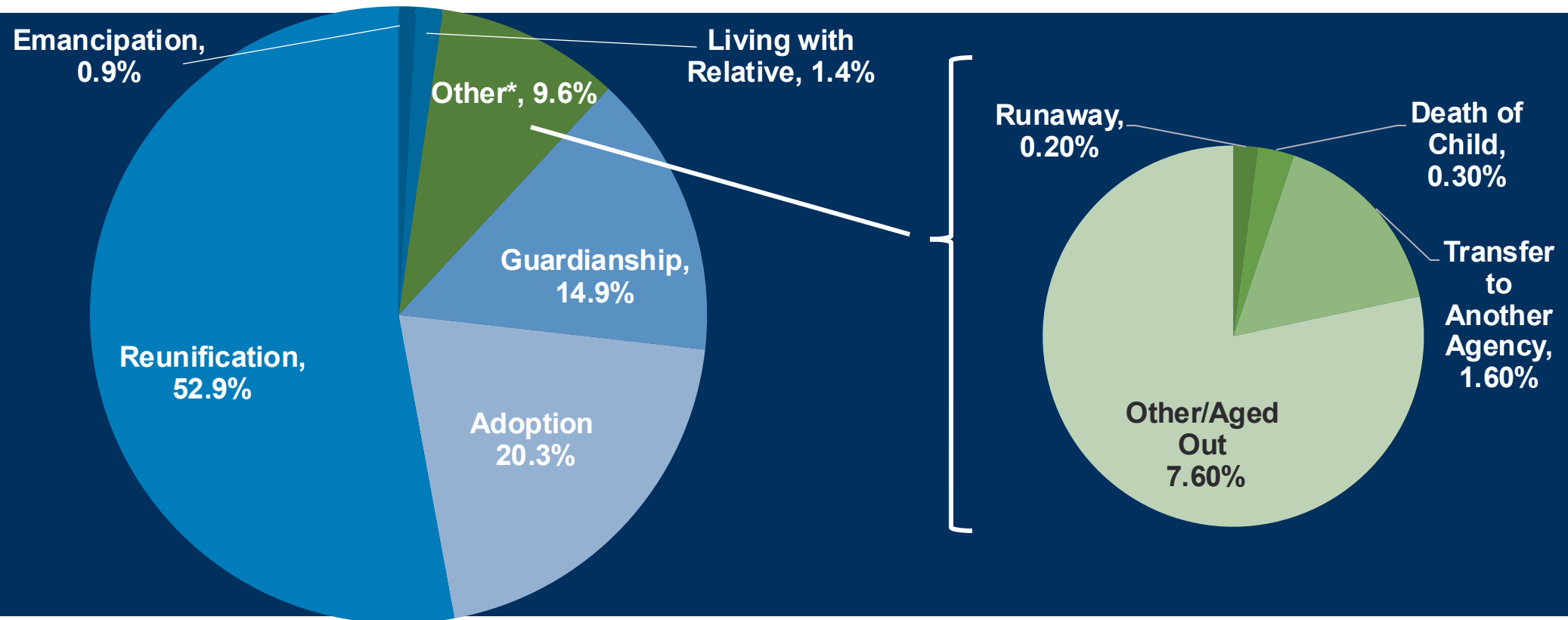
- Competing values family vs. stranger care
- Service array and lack of shared accountability across child serving partnerships
- Complexity of dependency court process



Adoption/Guardianship Outcomes



Exits from foster care FFY 2023









Questions?

Thank you.

