



Oregon Department of
**Early Learning
and Care**

Data Governance to advance data equity

Elise Cordle Kennedy (she/her), Chief Research and Data Officer

Dylan Antovich (he/him), Senior Data Analyst

Wednesday Oct. 29th, 2025, 1-3pm



Question – Your journey

Where are you in your data governance journey?

- Not started at all
- Planning
- Early initiation – holding meetings
- Full implementation





Funny Data Quotes

"The first rule about data governance is to not talk about data governance"

"Data without metadata is like a supermarket full of tins with no labels."

"Expecting data engineers to fix data quality is like asking your plumber to give you clean water"

"If data had mass, the earth would be a black hole"

"Data ages like fish not wine...it gets worse as it gets older, not better."



Why DELC cares about Data Governance



Promotes data equity:

- Sets standards to ensure data are collected using best practices around REALDT and SOGI information,
- Allows for disaggregation to understand who we serve
- Provides explicit policy to clarify data ownership and acceptable use (e.g., Tribal data sovereignty)



Supports more ethical data collection:

- Only necessary data are collected, and data collection methods are aligned, reducing burden
- Protects the security and privacy of data contributed by those we serve



Makes data more useful:

- Sets standards to improve the quality and utility
- Makes data easier to find and use (e.g., data dictionaries/catalogues, data sharing agreements)



Rules of resilience in DG

1. Make data governance fun!
2. Tie to a why
3. Build off existing work
4. Find solutions to problems that already exist (ie. don't make new problems)
5. Make data governance accessibly
6. Take. Your.....time 😊

How DELC does DG

Data Governance (n) – Cross-agency policies and processes for collecting, storing, organizing, cleaning, owning, sharing data, etc. aligned with DELC's strategy and values.

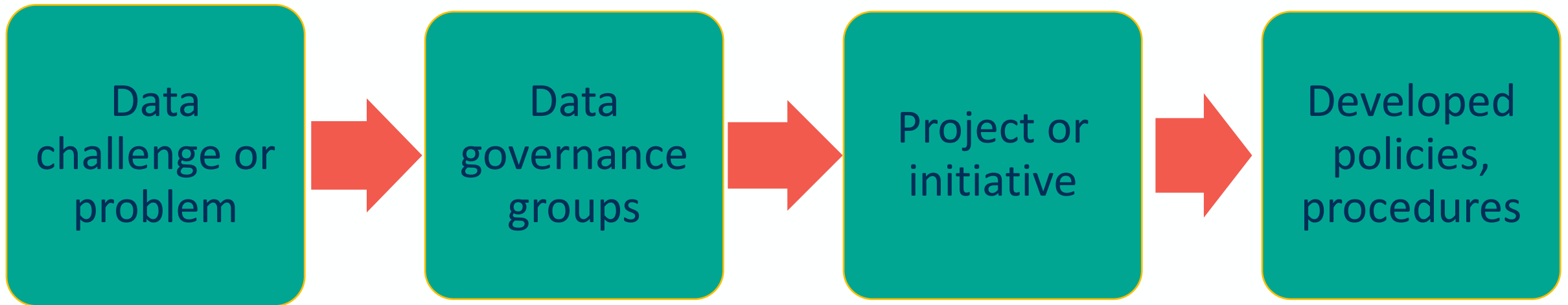
- End Products people can use
- Tagging and masking practices in Snowflake.

Data Governance (v) – Decision-making, policy-development, and problem-solving processes to ensure data governance (n) is fully implemented.

- Monthly staff groups
- Non-invasive practice— building off current work

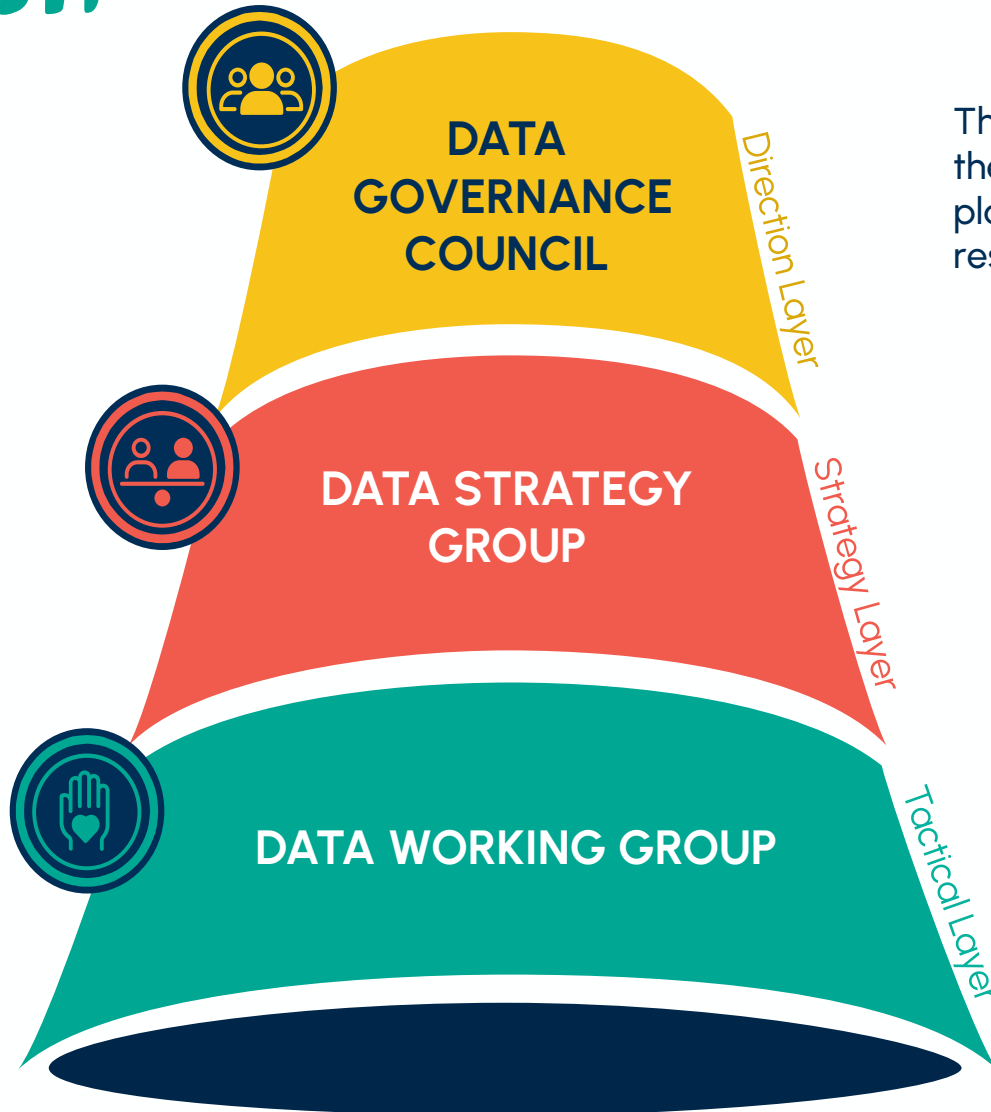


The cyclical governance structure





Data Governance Structure



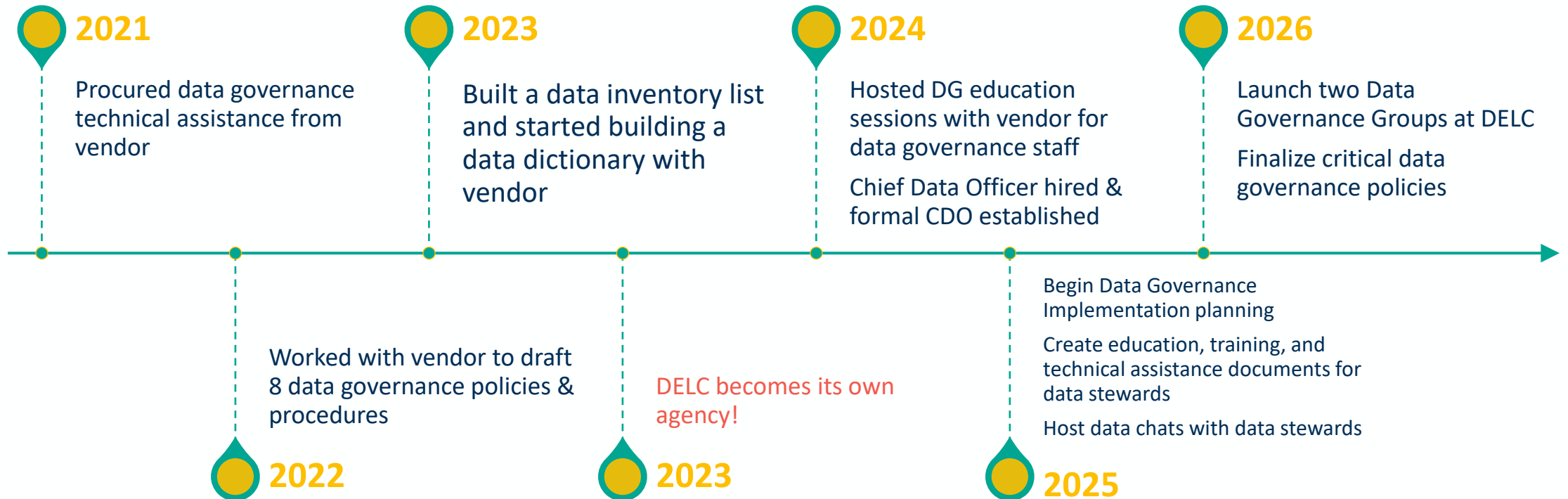
The **Direction** layer of DG will resolve anything that the data strategy group cannot resolve or be the place where agencywide strategic decisions are resolved.

The **Strategy** layer of DG will propose DG initiatives for Council approval, and then oversee the implementation of policies and initiatives upon approval.

The **Working** layer of DG will devise and enact activities to support implementation of DG policies and initiatives. They will be responsible for identifying and communicating opportunities for DG initiatives to the Strategy group.



Timeline of DG @ DELC



Data Governance requires cultural change

- Hosted information sessions for staff with vendor
- Required several executive leadership team meetings to align on committee structures
- Hosted data chats with data owners and stewards





What are data?

Data are pieces of information that can be brought together, analyzed, and used to make meaning.

- facts
- numbers
- stories
- pictures
- records



What type
of information can
help answer my
question?

Data Governance requires resilience & time

Durable, non-invasive
Data Governance
takes YEARS to
implement



Took a year to write the policies and get aligned on language



Took a year to design education and data governance materials for staff



Will take a year to implement the initial committees



Will take years to complete projects

