

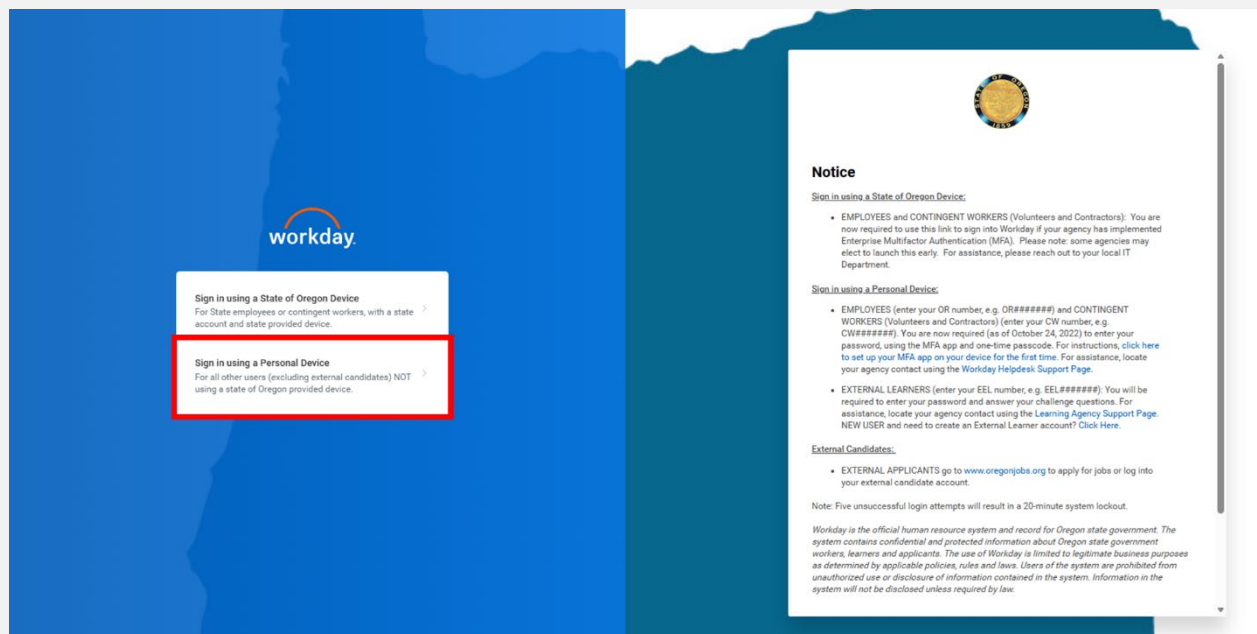


EElearner Login to Workday

This resource article provides step-by-step instructions on how an Extended Enterprise Learner (EElearner) logs into Workday using one of two authentication processes.

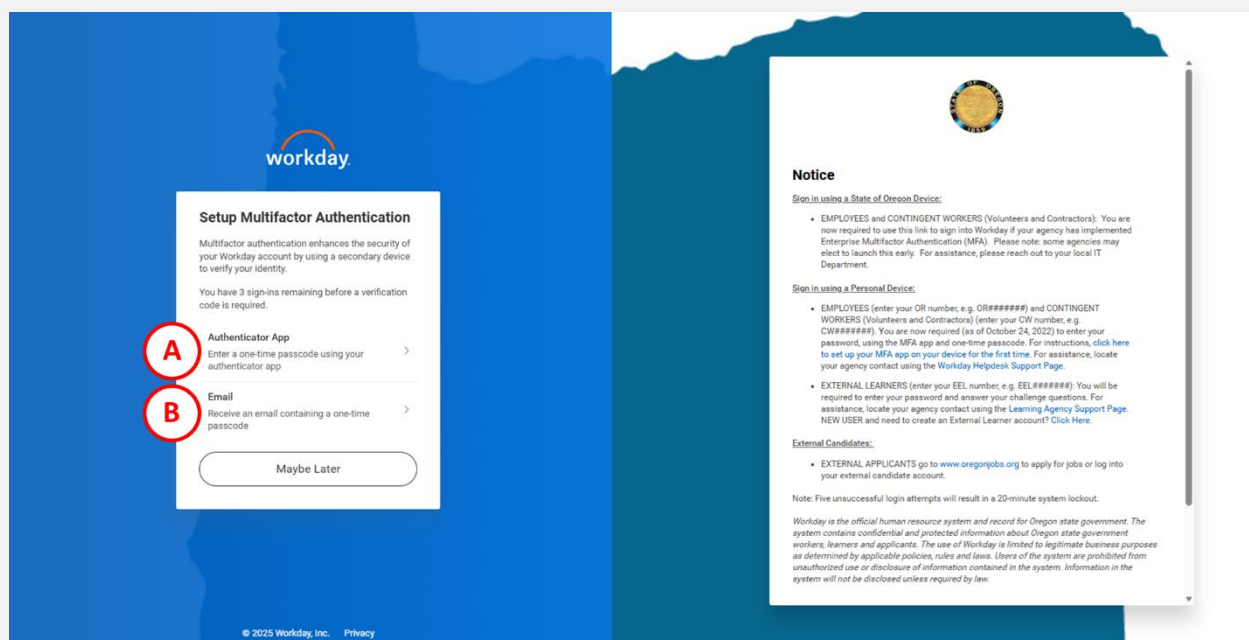
Below are the login steps required for an EElearner to login to Workday.

1. Login to Workday at <https://wd5.myworkday.com/oregon/d/home.html>.
2. From the Workday login screen, select "Sign in using a Personal Device" and enter your username and password.



3. From the Workday screen to "Setup Multifactor Authentication," select one of the following methods for all future logins:

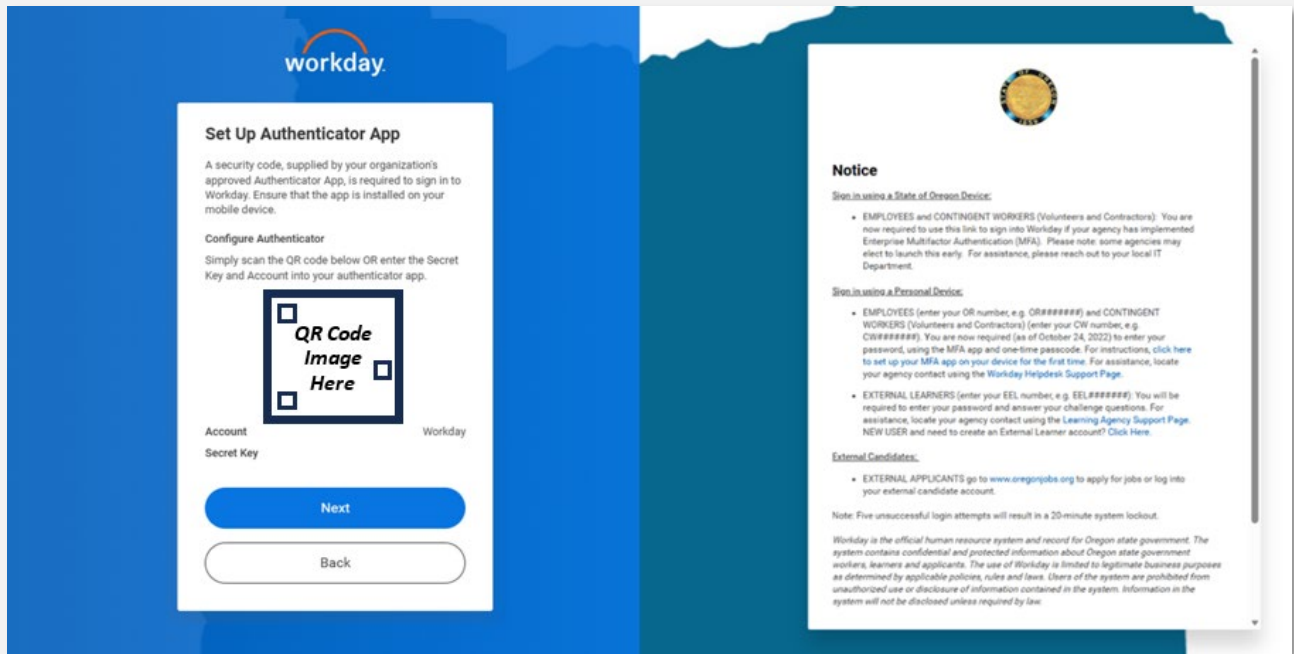
- A. Preferred option (A): Select "Authenticator App" to approve the login using an authenticator app (like Microsoft or Google Authenticator). These apps are free. You should not have to pay to have either app set up on your phone.
- B. Alternative option (B): Select "Email" to receive a one-time access code sent to your email address associated with your Workday account.



The option chosen for initial setup will be the method Workday will use for future logins with this account.

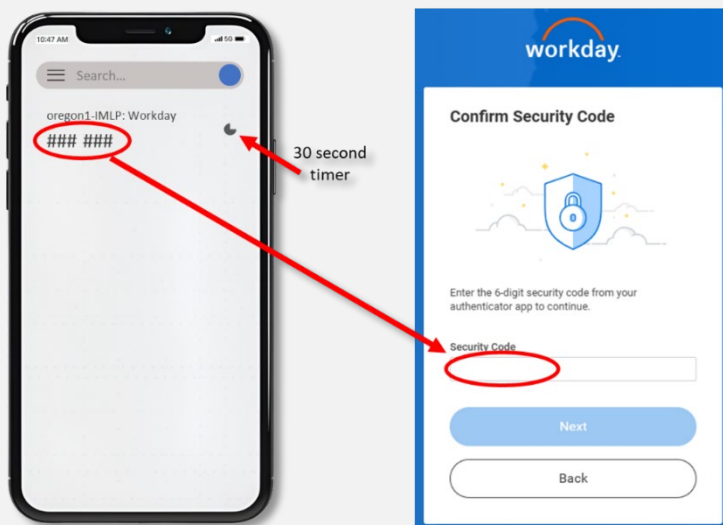
You may choose to skip multifactor authentication up to **three** times. After the third sign-in, without using multifactor authentication, you will be required to use one of the two options noted above to sign-in.

4. If using the preferred method (A) using an authenticator app (like Microsoft or Google Authenticator), configure your app with a QR code as indicated below:



Scanning the QR code will configure your phone's authenticator app with your Workday account.

5. Once the authenticator app is configured, enter the security code sent to your phone into the Workday "Confirm Security Code" screen:



You will have 30 seconds to enter the code, from your phone, into the Workday "Confirm Security Code" screen. If you do not enter the code within 30 seconds, you will be sent a new code to enter.

6. If using the alternative method (B), select the "Send an Email" button to receive a one-time verification code sent to the email address associated with your Workday account.

Send Verification Code

We will send a verification code to your email address so it can be used to verify your identity.

Email Address

@.com

Send to Email

Back

Notice

Sign in using a State of Oregon Device:

- EMPLOYEES and CONTINGENT WORKERS (Volunteers and Contractors): You are now required to use this link to sign into Workday if your agency has implemented Enterprise Multifactor Authentication (MFA). Please note, some agencies may elect to launch this early. For assistance, please reach out to your local IT Department.

Sign in using a Personal Device:

- EMPLOYEES (enter your OR number, e.g. OR#####) and CONTINGENT WORKERS (Volunteers and Contractors) (enter your CW number, e.g. CW#####). You are now required (as of October 24, 2022) to enter your password, using the MFA app and one-time passcode. For instructions, click [here](#) to set up your MFA app on your device for the first time. For assistance, locate your agency contact using the [Workday Helpdesk Support Page](#).
- EXTERNAL LEARNERS (enter your EEL number, e.g. EEL#####). You will be required to enter your password and answer your challenge questions. For assistance, locate your agency contact using the [Learning Agency Support Page](#). NEW USER and need to create an External Learner account? [Click Here](#).

External Candidates:

- EXTERNAL APPLICANTS go to www.oregonjobs.org to apply for jobs or log into your external candidate account.

Note: Five unsuccessful login attempts will result in a 20-minute system lockout.

Workday is the official human resource system and record for Oregon state government. The system contains confidential and protected information about Oregon state government workers, learners and applicants. The use of Workday is limited to legitimate business purposes as determined by applicable policies, rules and laws. Users of the system are prohibited from unauthorized use or disclosure of information contained in the system. Information in the system will not be disclosed unless required by law.

7. Once you receive the one-time code to your email, enter it in the "Enter Verification Code" screen, then select the "Continue" button to complete your login.

Enter Verification Code

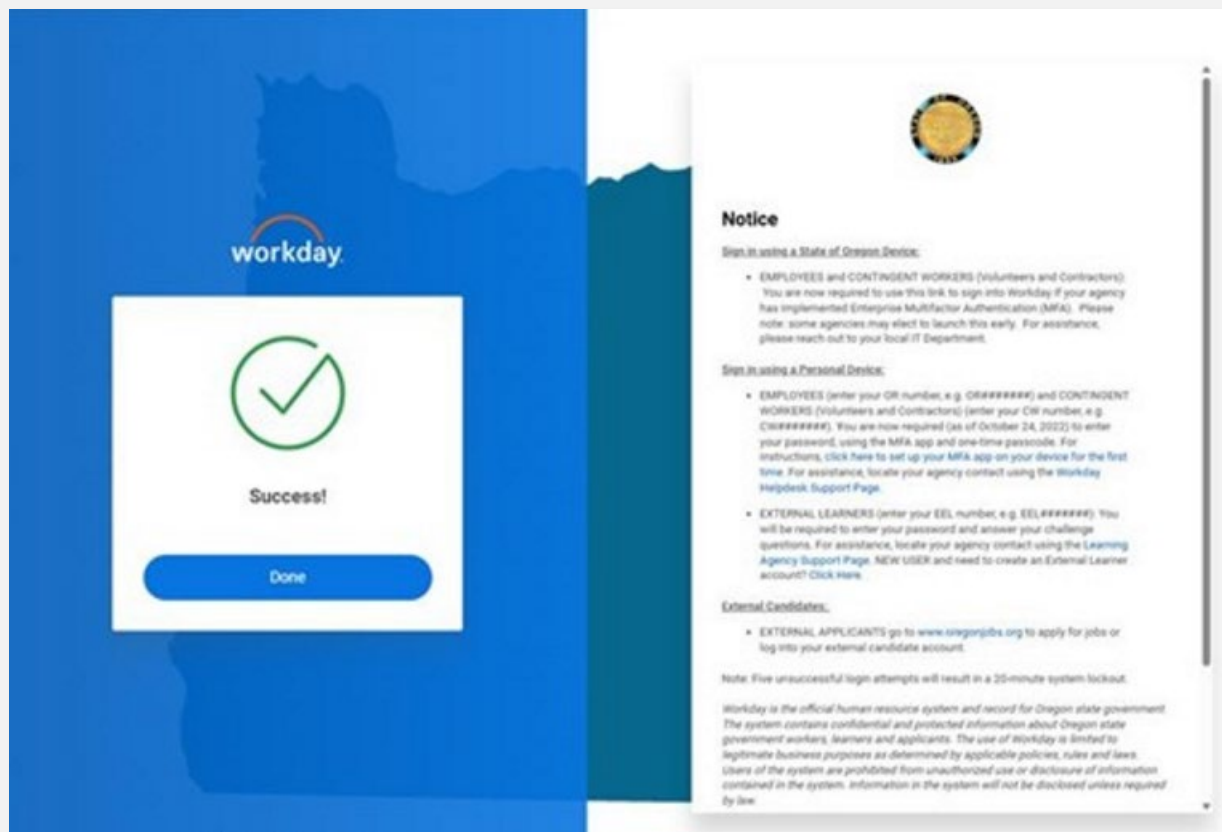
We sent a verification code to [email address]. Enter this code to verify this email address.

Verification Code

Continue

Back

8. A "Success" screen will appear when either authentication process is completed. Select the "Done" button to access Workday.



Each future login will require a new verification code.

* End of Resource Article *

If you have questions, contact WorkdayLearningODOT@odot.oregon.gov