

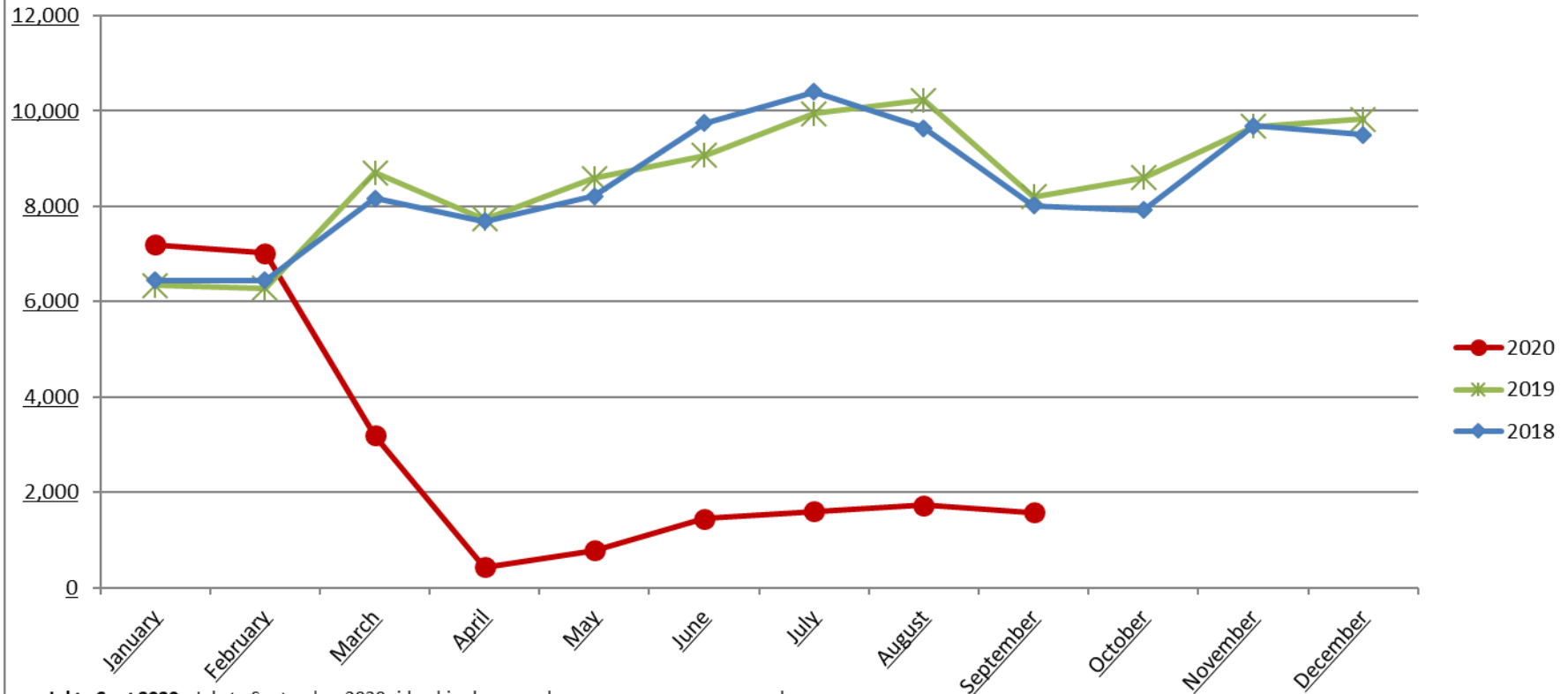
Amtrak Cascades Ridership in the Eugene-Portland Corridor

TRAINS OPERATED UNDER CONTRACT FOR THE OREGON DEPARTMENT OF TRANSPORTATION

TRAIN		JAN	FEB	MAR	APR	MAY	JUN	JUL	AUG	SEP	OCT	NOV	DEC	YEAR
500	2020	1357	1359	606	194	328	615	737	812	730				6738
506		832	871	297										2000
508		1557	1597	760										3914
Northward Trains		3746	3827	1663	194	328	615	737	812	730	0	0	0	12652
511 (M-F)		474	464	228										1166
513 (S-S-H)		445	438	131										1014
505		2535	2286	1172	237	460	833	871	920	851				10165
Southward Trains		3454	3188	1531	237	460	833	871	920	851	0	0	0	12345
All		7200	7015	3194	431	788	1448	1608	1732	1581	0	0	0	24997
500	2019	1,528	1,307	1,749	1,682	1,779	1,812	1,986	2,156	1,656	1,817	1,418	1,780	20,670
506		441	645	978	731	840	1,070	974	1,089	929	823	1,571	1,231	11,322
508		1,329	1,435	1,981	1,814	2,015	1,930	2,153	2,182	1,718	2,099	2,261	2,233	23,150
Northward Trains		3,298	3,387	4,708	4,227	4,634	4,812	5,113	5,427	4,303	4,739	5,250	5,244	55,142
511 (M-F)		395	392	561	558	568	675	789	760	572	744	586	730	7,330
513 (S-S-H)		260	334	545	352	397	536	486	513	435	367	802	696	5,723
505		2,383	2,170	2,892	2,598	2,987	3,043	3,559	3,530	2,893	2,750	3,033	3,152	34,990
Southward Trains		3,038	2,896	3,998	3,508	3,952	4,254	4,834	4,803	3,900	3,861	4,421	4,578	48,043
All		6,336	6,283	8,706	7,735	8,586	9,066	9,947	10,230	8,203	8,600	9,671	9,822	103,185
500	2018	1,324	1,226	1,724	1,556	1,793	1,783	2,136	2,095	1,594	1,610	1,864	1,526	20,231
506		473	650	717	747	741	950	1,072	869	1,134	787	1,135	1,522	10,797
508		1,496	1,560	2,055	1,751	1,944	2,704	2,452	2,304	1,591	1,886	2,323	2,140	24,206
Northward Trains		3,293	3,436	4,496	4,054	4,478	5,437	5,660	5,268	4,319	4,283	5,322	5,188	55,234
511 (M-F)		419	451	557	514	452	652	685	738	468	506	584	499	6,525
513 (S-S-H)		418	278	349	425	334	473	515	389	487	338	593	689	5,288
505		2,321	2,282	2,770	2,699	2,946	3,189	3,546	3,247	2,743	2,796	3,187	3,127	34,853
Southward Trains		3,158	3,011	3,676	3,638	3,732	4,314	4,746	4,374	3,698	3,640	4,364	4,315	46,666
All		6,451	6,447	8,172	7,692	8,210	9,751	10,406	9,642	8,017	7,923	9,686	9,503	101,900

Amtrak Cascades Ridership in the Eugene – Portland Corridor

Trains Operated Under Contract for the Oregon Department of Transportation



Jul to Sept 2020 - July to September 2020 ridership decreased year-over-year as compared to the same period in 2019. Ridership decreased 83.8% for July 2020, 83.1% for August 2020, and 80.7% for September 2020 compared to this same time period in 2019 due to the impacts of COVID-19. In May, ridership began to increase, and continued to steadily climb through July and August 2020, with a decrease in September. Decreases in ridership in September are typical with the end of summer. The service is anticipated to continue with the single roundtrip at 50% capacity to provide our passengers with safe and reliable services.

Apr to Jun 2020 - Ridership decreased year-over-year as compared to April and June 2019. Ridership decreased 94.4% for April 2020 and 90.8% for May 2020, and 84.0% for June 2020 compared to June 2019 due to the impacts of COVID-19. As a result of this decline in ridership, ODOT and WSDOT agreed to reduce service to one daily roundtrip between Eugene and Seattle. In May, ridership began to increase slightly.

Jan to Mar 2020 - January to February 2020 ridership increased year over year as compared to January and February 2019. Ridership increased 13.6% for January 2020 and 11.7% for February 2020. Ridership declined 63.3% in March 2020 compared to March 2019 as stay home orders were announced. As a result of this decline in ridership, ODOT and our partners reduced service to one daily roundtrip.

Oct to Dec 2019 - The ridership data from October to December 2019 shows an 8.5% increase in ridership for October 2019 and a 3.4% increase in ridership for December 2019 as compared to October and December 2018, respectively. The data for November 2019 showed a 0.2% decrease in ridership when compared to the November 2018 ridership data. Four trains were annulled due to bridge work in November 2019 contributing to the ridership decrease. Overall, 2019 ridership tracks closely with ridership in 2018.