

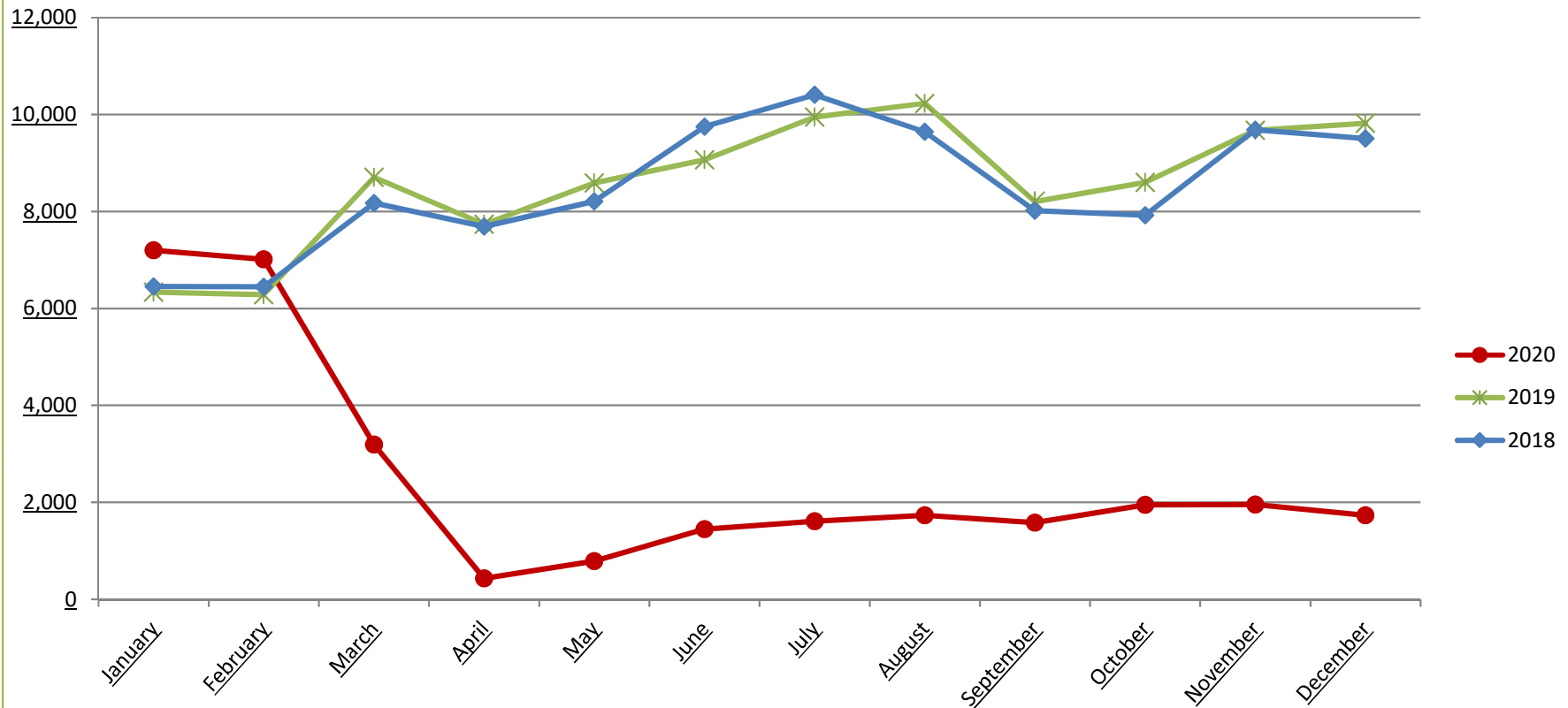
# Amtrak Cascades Ridership in the Eugene-Portland Corridor

TRAINS OPERATED UNDER CONTRACT FOR THE OREGON DEPARTMENT OF TRANSPORTATION

TRAIN		JAN	FEB	MAR	APR	MAY	JUN	JUL	AUG	SEP	OCT	NOV	DEC	YEAR	
<b>500</b>	<b>2020</b>	1357	1359	606	194	328	615	737	812	730	853	854	765	9210	
<b>506</b>		832	871	297											2000
<b>508</b>		1557	1597	760											3914
Northward Trains		3746	3827	1663	194	328	615	737	812	730	853	854	765		15124
<b>511 (M-F)</b>		474	464	228											1166
<b>513 (S-S-H)</b>		445	438	131											1014
<b>505</b>		2535	2286	1172	237	460	833	871	920	851	1095	1099	966		13325
Southward Trains		3454	3188	1531	237	460	833	871	920	851	1095	1099	966		15505
<b>All</b>		<b>7200</b>	<b>7015</b>	<b>3194</b>	<b>431</b>	<b>788</b>	<b>1448</b>	<b>1608</b>	<b>1732</b>	<b>1581</b>	<b>1948</b>	<b>1953</b>	<b>1731</b>		<b>30629</b>
<b>500</b>		<b>2019</b>	1,528	1,307	1,749	1,682	1,779	1,812	1,986	2,156	1,656	1,817	1,418	1,780	20,670
<b>506</b>	441		645	978	731	840	1,070	974	1,089	929	823	1,571	1,231	11,322	
<b>508</b>	1,329		1,435	1,981	1,814	2,015	1,930	2,153	2,182	1,718	2,099	2,261	2,233	23,150	
Northward Trains	3,298		3,387	4,708	4,227	4,634	4,812	5,113	5,427	4,303	4,739	5,250	5,244	55,142	
<b>511 (M-F)</b>	395		392	561	558	568	675	789	760	572	744	586	730	7,330	
<b>513 (S-S-H)</b>	260		334	545	352	397	536	486	513	435	367	802	696	5,723	
<b>505</b>	2,383		2,170	2,892	2,598	2,987	3,043	3,559	3,530	2,893	2,750	3,033	3,152	34,990	
Southward Trains	3,038		2,896	3,998	3,508	3,952	4,254	4,834	4,803	3,900	3,861	4,421	4,578	48,043	
<b>All</b>	<b>6,336</b>		<b>6,283</b>	<b>8,706</b>	<b>7,735</b>	<b>8,586</b>	<b>9,066</b>	<b>9,947</b>	<b>10,230</b>	<b>8,203</b>	<b>8,600</b>	<b>9,671</b>	<b>9,822</b>		<b>103,185</b>
<b>500</b>	<b>2018</b>		1,324	1,226	1,724	1,556	1,793	1,783	2,136	2,095	1,594	1,610	1,864	1,526	20,231
<b>506</b>		473	650	717	747	741	950	1,072	869	1,134	787	1,135	1,522	10,797	
<b>508</b>		1,496	1,560	2,055	1,751	1,944	2,704	2,452	2,304	1,591	1,886	2,323	2,140	24,206	
Northward Trains		3,293	3,436	4,496	4,054	4,478	5,437	5,660	5,268	4,319	4,283	5,322	5,188	55,234	
<b>511 (M-F)</b>		419	451	557	514	452	652	685	738	468	506	584	499	6,525	
<b>513 (S-S-H)</b>		418	278	349	425	334	473	515	389	487	338	593	689	5,288	
<b>505</b>		2,321	2,282	2,770	2,699	2,946	3,189	3,546	3,247	2,743	2,796	3,187	3,127	34,853	
Southward Trains		3,158	3,011	3,676	3,638	3,732	4,314	4,746	4,374	3,698	3,640	4,364	4,315	46,666	
<b>All</b>		<b>6,451</b>	<b>6,447</b>	<b>8,172</b>	<b>7,692</b>	<b>8,210</b>	<b>9,751</b>	<b>10,406</b>	<b>9,642</b>	<b>8,017</b>	<b>7,923</b>	<b>9,686</b>	<b>9,503</b>		<b>101,900</b>

# Amtrak Cascades Ridership in the Eugene – Portland Corridor

## Trains Operated Under Contract for the Oregon Department of Transportation



**Oct to Dec 2020** - October to December 2020 ridership decreased year-over-year as compared to the same period in 2019. Ridership decreased 77.3% for October 2020, 79.8% for November 2020, and 82.4% for December 2020 compared to this same time period in 2019. Ridership was beginning to increase until a two-week freeze was issued to slow the spread of COVID, followed by an additional two-week restriction in December, both of which led to reductions in ridership. The reduced level of service will continue with a single roundtrip at 50% until conditions allow for increased frequency of service.

**Jul to Sept 2020** - July to September 2020 ridership decreased year-over-year as compared to the same period in 2019. Ridership decreased 83.8% for July 2020, 83.1% for August 2020, and 80.7% for September 2020 compared to this same time period in 2019 due to the impacts of COVID-19. In May, ridership began to increase, and continued to steadily climb through July and August 2020, with a decrease in September.

Decreases in ridership in September are typical with the end of summer. The service is anticipated to continue with the single roundtrip at 50% capacity to provide our passengers with safe and reliable services.

**Apr to Jun 2020** - Ridership decreased year-over-year as compared to April and June 2019. Ridership decreased 94.4% for April 2020 and 90.8% for May 2020, and 84.0% for June 2020 compared to June 2019 due to the impacts of COVID-19. As a result of this decline in ridership, ODOT and WSDOT agreed to reduce service to one daily roundtrip between Eugene and Seattle. In May, ridership began to increase slightly.

**Jan to Mar 2020** - January to February 2020 ridership increased year over year as compared to January and February 2019. Ridership increased 13.6% for January 2020 and 11.7% for February 2020. Ridership declined 63.3% in March 2020 compared to March 2019 as stay home orders were announced. As a result of this decline in ridership, ODOT and our partners reduced service to one daily roundtrip.