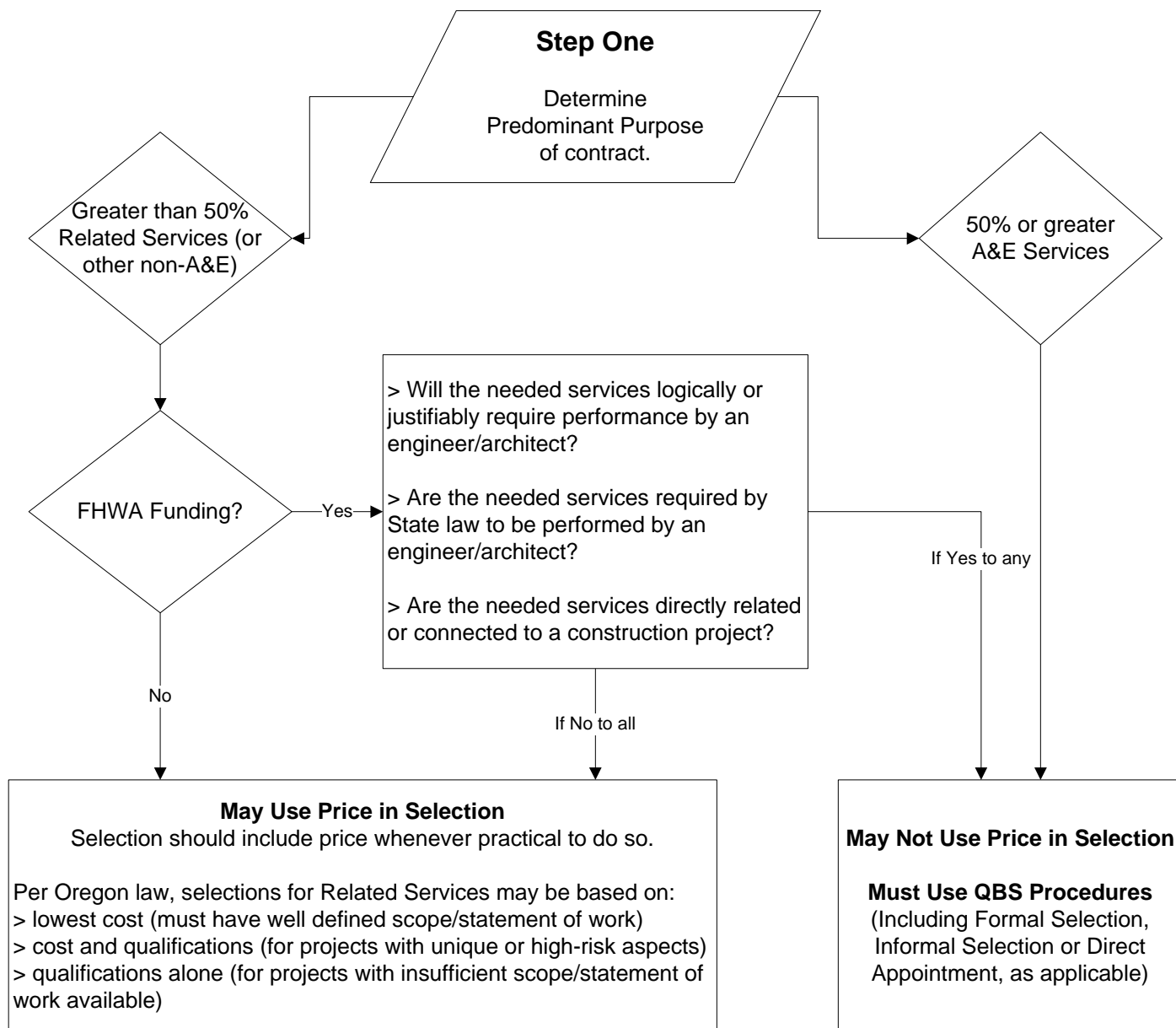


# When Can Price Be Used In Selections For A&E “Related Services” or A&E Mixed Contracts?



**Definitions:**

**“Predominant Purpose”** – For mixed contracts that include A&E services, the predominant purpose of the contract is established by determining which of the services involves the majority of the total Estimated Fee to be paid under the Contract [per OAR 137-048-0130(5)].

**“QBS”** – Qualifications Based Selection, where price is not considered until after selecting the most qualified firm.

**“A&E Services”** - Professional services that are required to be performed by an architect, engineer, photogrammetrist, transportation planner or land surveyor.

**“Related Services”** - Personal services, other than architectural, engineering, photogrammetric mapping, transportation planning or land surveying services, that are related to planning, designing, engineering or overseeing public improvement projects or components of public improvement projects, including but not limited to landscape architectural services, facilities planning services, energy planning services, space planning services, hazardous substances or hazardous waste or toxic substances testing services, cost estimating services, appraising services, material testing services, mechanical system balancing services, commissioning services, project management services, construction management services and owner’s representation services or land-use planning services.

**“Transportation planning services”** means transportation planning services for projects that require compliance with the National Environmental Policy Act, 42 U.S.C.