

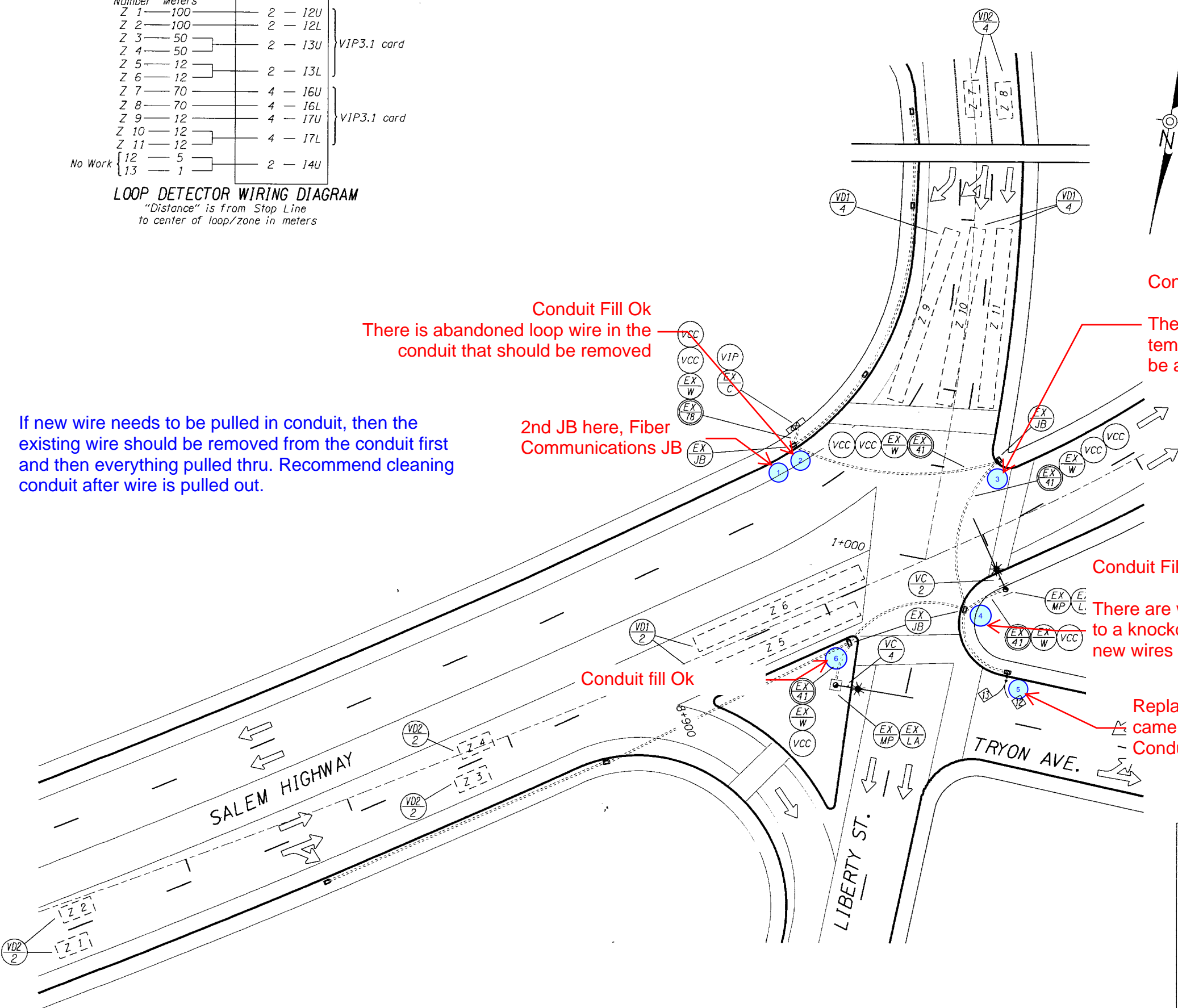
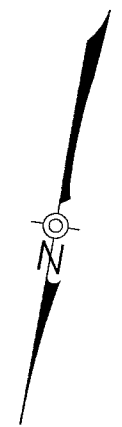


DETECTOR PLAN  
SALEM HIGHWAY (PARKWAY) AT LIBERTY ST.  
ORE99E BUS M.P. 3.34

Loop Number	Distance Meters	Phase	Slot
Z 1	100	2	12U
Z 2	100	2	12L
Z 3	50	2	13U
Z 4	50	2	13L
Z 5	12	2	13L
Z 6	12	2	13L
Z 7	70	4	16U
Z 8	70	4	16L
Z 9	12	4	17U
Z 10	12	4	17L
Z 11	12	4	17L
No Work	12	5	
	13	1	

LOOP DETECTOR WIRING DIAGRAM  
"Distance" is from Stop Line to center of loop/zone in meters

- LEGEND**
- (EX C) Retain and protect existing Model 170 controller and Model 332 cabinet
  - (EX MP) Retain and protect existing traffic signal mast arm pole
  - (EX LA) Retain and protect existing luminaire arm
  - (EX JB) Retain and protect existing junction box
  - (EX W) Retain and protect existing wiring
  - (EX S) Retain and protect existing electrical conduit size (S=size) mm
  - (Ph) Define phase (Ph=phase) video detection zone 21m by 1.8m
  - (VDZ Ph) Define phase (Ph=phase) video detection zone 4m by 1.8m



Conduit Fill Ok  
There is abandoned loop wire in the conduit that should be removed

2nd JB here, Fiber Communications JB

Conduit Fill Ok

There are wires spliced in the JB, temporary due to a knockdown that should be addressed when new wires are added

Conduit Fill Ok

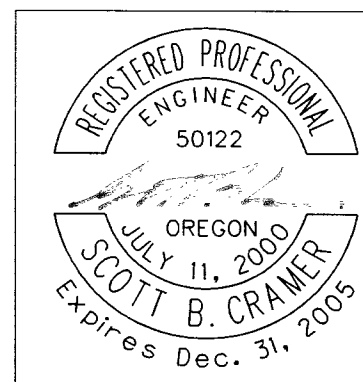
There are wires spliced in the JB, temporary due to a knockdown that should be addressed when new wires are added

Conduit fill Ok

Replace loops with a camera if impacted.  
Conduit Fill Ok

If new wire needs to be pulled in conduit, then the existing wire should be removed from the conduit first and then everything pulled thru. Recommend cleaning conduit after wire is pulled out.

Note:  
Contractor is responsible for re-wiring and re-numbering of new and existing detector loops, in junction boxes and cabinet, to match wiring diagram



OREGON DEPARTMENT OF TRANSPORTATION TRAFFIC MANAGEMENT SECTION TRAFFIC SIGNAL INSTALLATION CHEMAWA ROAD - N SANTIAM INTERCHANGE SALEM HIGHWAY MARION COUNTY	
DESIGNED BY: S. Cramer	
CHECKED BY: T. Jenkins	
DRAWN BY: S. Cramer	
FC: 72	T.M.S. DWG. NO. 13380