

EXP. DATE: 6/30/15

DATE SIGNED: 6/26/14

SIGNAL MODIFICATION

REVISIONS			
NO.	DESCRIPTION	DATE	BY
1	SIGNAL MOD. DESIGN	6/26/14	TLH
2	AS-BUILT	9/12/14	DTN

ATUM: SPCS / NGVD 29(47)
 URVEY: COS
 ORIZ SCALE: AS SHOWN
 VERT SCALE: AS SHOWN
 ESIGN: TLH
 RAWN: DTN
 CHECKED:

APPROVED:

SHEET TITLE

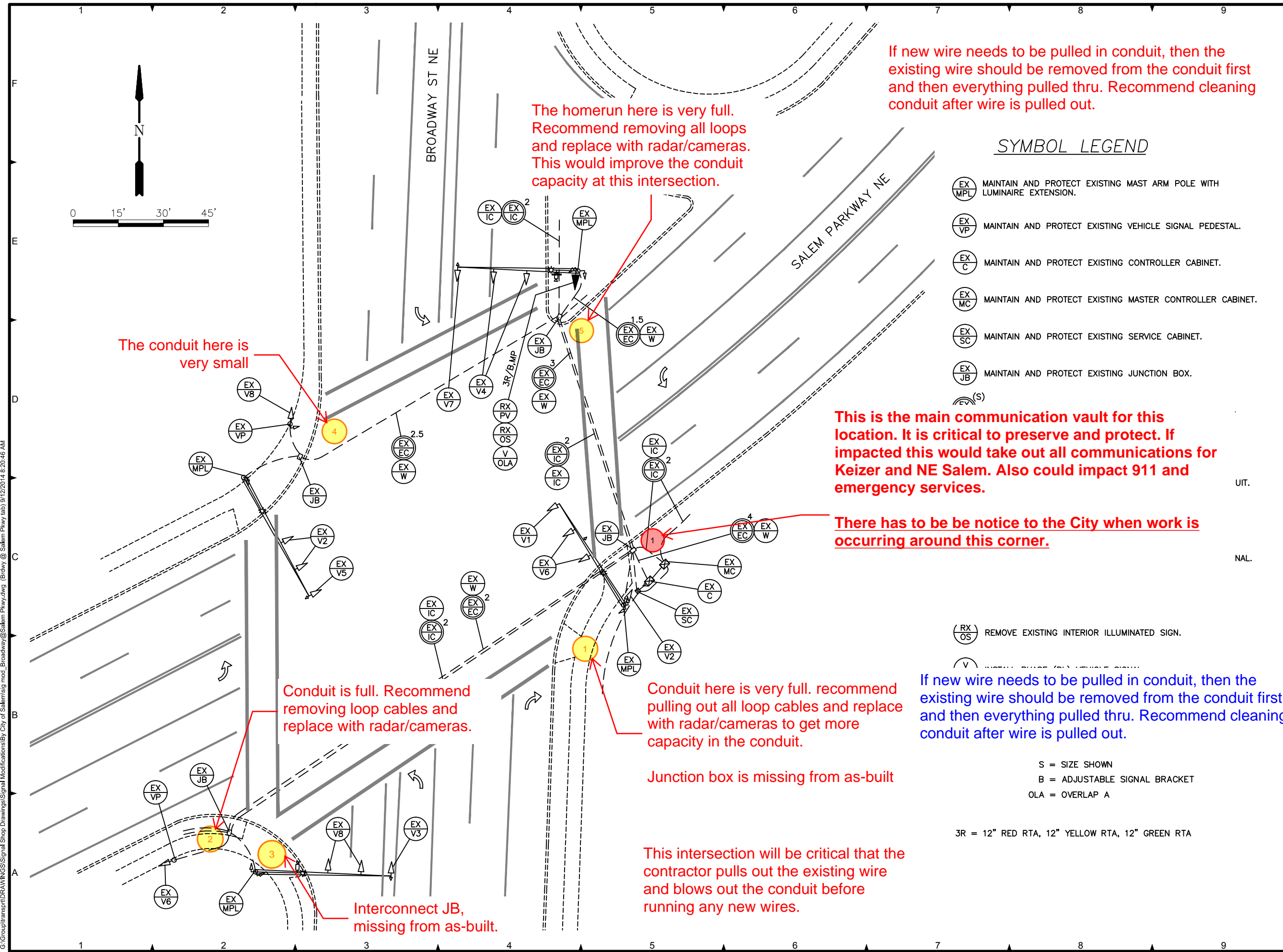
BY CITY CREWS

SIGNAL MODIFICATION

SALEM PKWY/BROADWAY ST

TS-01

SHEET 1 OF 1



If new wire needs to be pulled in conduit, then the existing wire should be removed from the conduit first and then everything pulled thru. Recommend cleaning conduit after wire is pulled out.

The homerun here is very full. Recommend removing all loops and replace with radar/cameras. This would improve the conduit capacity at this intersection.

The conduit here is very small

This is the main communication vault for this location. It is critical to preserve and protect. If impacted this would take out all communications for Keizer and NE Salem. Also could impact 911 and emergency services.

There has to be notice to the City when work is occurring around this corner.

Conduit is full. Recommend removing loop cables and replace with radar/cameras.

Conduit here is very full. recommend pulling out all loop cables and replace with radar/cameras to get more capacity in the conduit.

If new wire needs to be pulled in conduit, then the existing wire should be removed from the conduit first and then everything pulled thru. Recommend cleaning conduit after wire is pulled out.

Junction box is missing from as-built

This intersection will be critical that the contractor pulls out the existing wire and blows out the conduit before running any new wires.

Interconnect JB, missing from as-built.

- SYMBOL LEGEND**
- (EX MPL) MAINTAIN AND PROTECT EXISTING MAST ARM POLE WITH LUMINAIRE EXTENSION.
 - (EX VP) MAINTAIN AND PROTECT EXISTING VEHICLE SIGNAL PEDESTAL.
 - (EX C) MAINTAIN AND PROTECT EXISTING CONTROLLER CABINET.
 - (EX MC) MAINTAIN AND PROTECT EXISTING MASTER CONTROLLER CABINET.
 - (EX SC) MAINTAIN AND PROTECT EXISTING SERVICE CABINET.
 - (EX JB) MAINTAIN AND PROTECT EXISTING JUNCTION BOX.
 - (S)

(RX OS) REMOVE EXISTING INTERIOR ILLUMINATED SIGN.

(V)

S = SIZE SHOWN
 B = ADJUSTABLE SIGNAL BRACKET
 OLA = OVERLAP A

3R = 12" RED RTA, 12" YELLOW RTA, 12" GREEN RTA

G:\Group\transp\DRAWINGS\SIGNAL Shop Drawings\SIGNAL Modifications\By City of Salem\mod_Broadway@Salem Pkwy.dwg (Browy @ Salem Pkwy) 9/12/2014 8:20:46 AM