

# Unit 1 Lesson 1: Introduction and Resources

---



## Course Navigation Tips:

- To complete each lesson, you must interact with the audio narration at the top of each section.
- You may drag the toggle on the playback bar to the last 5 seconds and let it play. This will allow the system to note it as complete.
- You are encouraged to complete the entire unit before closing in case your progress is not saved.



**You must click on all images before moving on to next Lesson.**



02:30

Start Audio Narration

---

## Introduction

This training focuses on curb ramp and pedestrian push button inspection procedures on or along the Oregon Department of Transportation (ODOT) State Highway System and for ODOT administered projects. This training includes information about the Americans with Disabilities Act (ADA) as it relates to ODOT facilities. This is not intended to be a comprehensive training related to Americans with Disabilities Act design or ODOT policy. Any questions about curb ramp or pedestrian push button compliance should be directed to the ODOT Engineering Services Roadway Section.

The objectives of this course are to:

- Learn ODOT curb ramp standards and its relationship to the Americans with Disabilities Act (ADA) and its legal requirements.
- Review how contract documents, plans and specifications are applicable to curb ramp inspections.
- Learn how to use the ODOT FACS-STIP mapping tool to find curb ramp data used in the Curb Ramp and Push Button Inspection Forms.
- Learn which tools are needed for inspection and how to use them.
- Learn where approved Design Exceptions and Crosswalk Closure documents are, and how they impact inspections.
- Learn about available curb ramp inspection resources and provide contact information for questions.

In addition, the course is focused on specifics such as:

- Identifying the components of a curb ramp system and how to measure and record the data in the Inspection Forms.
- Completing the ODOT Curb Ramp Inspection Forms 734- 5020A through 734-5020H and ODOT Push Button Inspection Forms 734-5245A and 734-5245B.
- Choosing the correct inspection form for each curb ramp style or pushbutton surface type.

- Identifying the features of a pedestrian signal system and push button and how to measure and record data in the Inspection Forms.
- Understanding Temporary Pedestrian Access Routes (TPAR) requirements when curb ramps are constructed.



02:27

Continue Audio Narration

## ADA Curb Ramp Inspection Certification and Re-Certification Process

An active Curb Ramp Inspection certification is required for anyone performing ADA curb ramp or push button inspections on or along a State highway, and for contractors who must meet the requirements of the Oregon Standard Specifications for Construction.

The ODOT Inspection Quality Assurance Certification Program maintains a list of inspectors and their certifications on the website.

### To receive a 2-year certification one must complete the following:

**Step 1** – Complete the online training and pass 100% of all quizzes of Course A (online and self-guided) (approximately 16 hours)

**Step 2** – Once online course training is completed, sign up and complete the ADA Curb Ramp Inspection Exam A with an 80% passing score or better (online) (3 hours)

- A Second attempt is offered.
- If the exam is not passed in two attempts, go to Step 1

**Step 3** – Sign up for and complete the ADA Field Exam (in-person practical) (9 hours)

- Once you have passed Exam A, you must complete the field exam within 6 weeks of passing online Exam A.
- You must successfully complete 3 curb ramp and one push button inspection forms.
  - a. If you fail 1 or 2 inspection forms, you may take a partial field exam.
  - b. If you fail 3 or 4 inspection forms, you go back to Step 1

**To be recertified you must meet the following qualifications:**

- You must have taken and passed your last ADA Inspection certification course within two years (24 months).
- If it has been more than 24 months since your last certification exam or it has expired, take the initial Course A track.

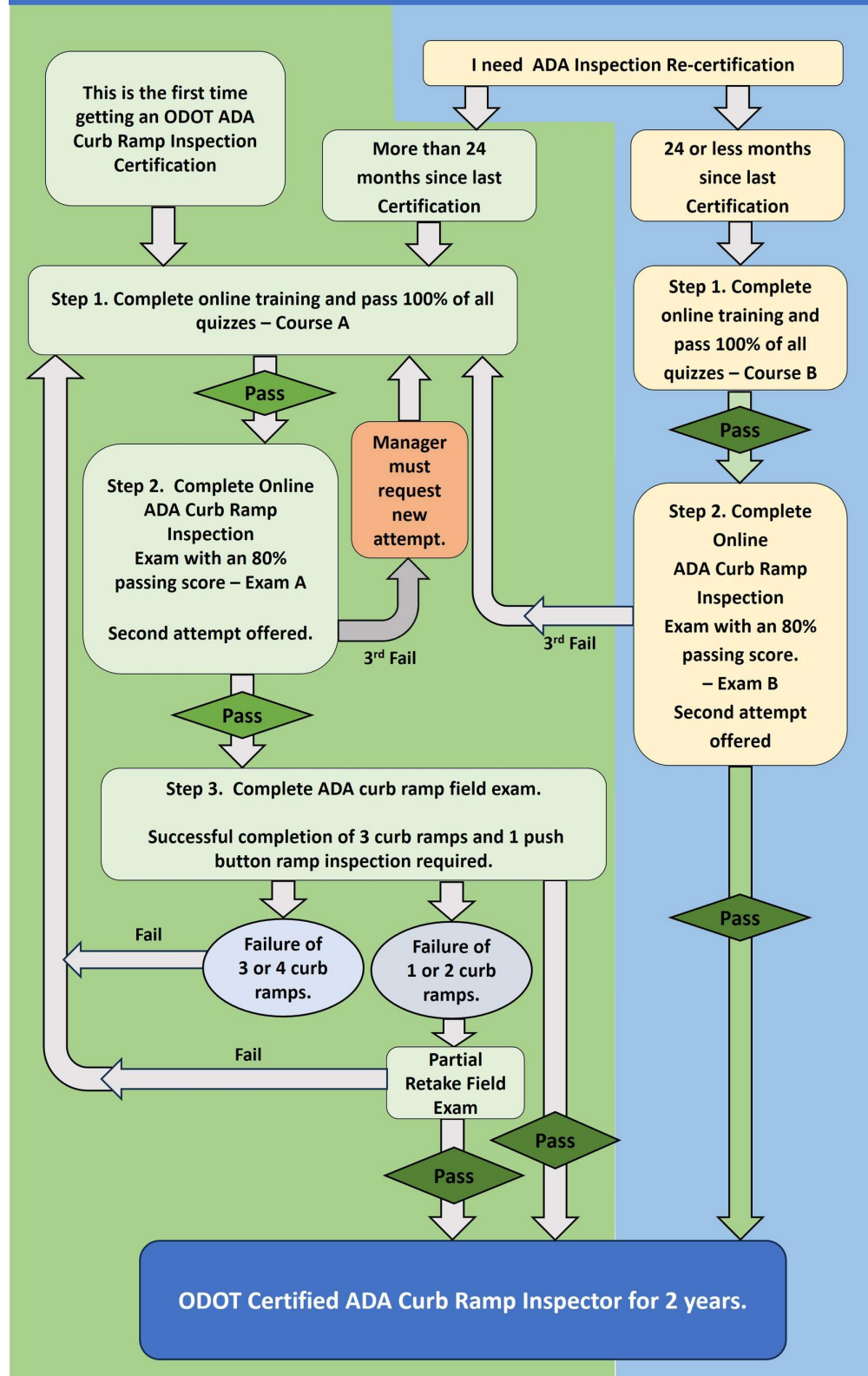
**For re-certification one must complete the following:**

**Step 1** – Complete the online course training and pass 100% of all quizzes of Course B (online and self-guided) (Approximately 8 hours)

**Step 2** – Once online course training is completed, sign up and complete the ADA Curb Ramp Inspection Exam B with an 80% passing score or better (online) (3 hours)

- A Second attempt is offered.
- If the exam is not passed in two attempts, go to Step 1 of Course A for initial certification to review all materials; and a field exam will be required as Step 3.

## ADA Curb Ramp Inspection Certification Process





05:58

Continue Audio Narration

---

## Course Units

This training course is divided into 15 Units.

- Unit 1: Introduction
- Unit 2: Inspection Resources and Tools
- Unit 3: Corner and Curb Ramp Position Numbering
- Unit 4: FACS-STIP
- Unit 5: Pedestrian Access Route & Curb Ramp System
- Unit 6: Curb Ramp Attributes
- Unit 7: Curb Ramp Styles
- Unit 8: Crosswalks and Crosswalk Closures
- Unit 9: Curb Ramp Inspection Forms
- Unit 10: Pedestrian Signal Pushbutton & Inspection Forms
- Unit 11: Submitting Inspection Forms
- Unit 12: Expanded Topics and FAQs
- Unit 13: Practice Makes Perfect

- Unit 14: Advanced Inspection & New Form
- Unit 15: Temporary Pedestrian Access Routes (TPAR)

## On-line Course Tips

In addition to the resources in the next section of this training, the [ADA Curb Ramp Inspector Certification Website](#) has resources with links and pdf materials you may need to reference throughout the course. Resources are also accessible from the menu during this course.

At the end of the course, we encourage you to complete the evaluation form found in Resources. You may submit the evaluation using the Submit button on the form.

### Some additional tips to navigate the course:

- If you are having trouble viewing an image, click on the image to enlarge it to full screen.
- For a narration of the written material, click on the "Audio" button at the top of each lesson. **Playing the audio all the way through is required to continue.** You can fast forward the narration at any time once you've started the audio to proceed onto another lesson if you no longer wish to listen to the narration.
- When you take a break from the training you are encouraged to complete an entire Unit before closing to ensure that your progress is saved.
- To move to each new lesson, you must complete all questions, expand all tabs, review all figures, complete quizzes, and advance audio to the end before moving on. There are several lessons within each unit.



You may have to refresh your web browser if you have been away too long to continue.

## Course Resources/Internet Search Terms

Throughout the course, you will be asked to view certain online resources. They will also need to be accessed to complete the online course. You may download them from the following links:

## Technical Resources

### Oregon Standard Drawings

It is recommended to download the following Standard Drawing Sets:

Standard Drawings RD700 Series

Standard Drawings RD900 Series

STANDARD DRAWINGS

### ODOT Engineering for Accessibility

Resources for Accessible Engineering and Design

ODOT ACCESSIBILIT...

### Roadway Assets & Inspection

The following resources can be found on the Roadway Assets & Inspection Page

In the Accessing the Inventory drop down menu:

- ODOT FACS-STIP



In the Inspection drop down menu:

- All curb ramp and push button forms.

In the General Resources drop down menu:

- ADA Inspection Guide: Curb Ramps and Push Buttons
- ODOT Standard Comments for Curb Ramp Inspections
- Exhibit A – Curb Ramp Location and Numbering
- Exhibit C – Push Button Clear Space Surface Types
- Exhibit D – Intersection Control Type for Gutter Flow
- RD19-02(B) Measurement Criteria for Newly Constructed Curb Ramps, Driveways, and Sidewalks.

ASSETS & INSPECTI...

## ADA Inspection Guide: Curb Ramps and Push Buttons

This guide provides a general overview of definitions, methods of measurement and documentation requirements required for ADA Inspections on or along the State Highway.

INSPECTION GUIDE

## ODOT Qualified Products List

This is the list used for ODOT construction projects to identify qualified products.

QPL

## Contract Plan Set for Online Exam

The following plan set will be needed for the online exam:



**K22209\_C15343\_Contract\_Plans\_1.26.23.pdf**  
61.5 MB



## 2024 Oregon Standard Specifications

You will also need a copy of the 2024 Oregon Standard Specifications for construction. This is available on-line or for purchase.

STANDARD SPEC

## Technical Support- ODOT ADA Group

### Taundra Mortensen, PE

Senior ADA Standards Engineer  
Standards and Inspection Criteria  
503-400-4256

EMAIL

### Pamela Johnson, PE

ADA Standards Engineer  
Standards and Inspection Criteria  
503-354-7213

EMAIL

### Melissa Dodd

Statewide Asset Specialist  
Inspection Criteria and Form Submission

971-719-6840

EMAIL

## Jason Hiles

Inventory Crew Lead

Inspection Criteria

503-991-8910

EMAIL

## Training & Certification – ODOT Construction Section

ODOT Construction Training

503-986-4336

EMAIL

## Work Zone Standards – ODOT Traffic Section

EMAIL



Review all figures and advance audio to the end before moving on.

CONTINUE

## Unit 1 Lesson 2: Background and History of The Americans with Disabilities Act (ADA)

---



**You must click on all images before moving on to next Lesson.**



05:40

Start Audio Narration

---

### The Americans with Disabilities Act (ADA)

"The Americans with Disabilities Act (ADA) became law in 1990. The ADA is a civil rights law that prohibits discrimination against individuals with disabilities in all areas of public life, including jobs, schools, transportation, and all public and private places that are open to the general public." –

*ADA National Network*

The Americans with Disabilities Act (ADA) is a civil rights law that has been in effect for over 30 years. It affords similar protections against discrimination to Americans with disabilities as the Civil Rights Act of 1964, which made discrimination based on race, religion, sex, national origin and other characteristics illegal.

The Americans with Disabilities Act regulations became law in the 1990s. ADA is very broad and applies to all people in all places. It includes physical and cognitive disorders, as well as hidden

disabilities that may not be visibly apparent. **It is important to remember that the construction of curb ramps affects people of all ages based on their current or future needs as pedestrians and their ability to travel to places independently.** The Americans with Disabilities Act regulations for construction of curb ramps focus on universal design principles and solutions that work for everyone.

The Following are events that have occurred in Oregon that pertain to The Americans with Disabilities Act:

## **1970s**

It has been Oregon law to provide curb ramps since 1971 after the passage of the Oregon Bike Bill. Curb Ramps were initially recognized as bike ramps/sidewalk ramps.

In 2018, the Oregon Standard Drawings and Specifications changes the name to curb ramp.

## **1990s**

Americans with Disabilities Act regulations were enacted by the U.S. Congress and signed by President George Herbert Walker Bush into law on July 26, 1990.

The requirements for Americans with Disabilities Act curb ramps were published on July 26, 1991, and became effective on January 26, 1992.

## **2008**

The definition of disability was broadened and amended by the Americans with Disabilities Act Amendment Act.

## **2015**

ODOT curb ramp inspection forms were introduced.

## 2020

July 2020 marked the 30th anniversary of the Americans with Disabilities Act law in the United States.

## ADA Amendment Act (ADAAA) 2008

In September of 2008, an amendment signed by the President made changes to the definition of a "disability" to be broader. The term "disability" means, with respect to an individual,

- A physical or mental impairment that substantially limits one or more major life activities of such individual;
- A record of such an impairment; or
- Being regarded as having such an impairment.

(3) REGARDED AS HAVING SUCH AN IMPAIRMENT.—For purposes of paragraph (1)(C):

(A) An individual meets the requirement of "being regarded as having such an impairment" if the individual establishes that he or she has been subjected to an action prohibited under this Act because of an actual or perceived physical or mental impairment whether or not the impairment limits or is perceived to limit a major life activity.

(B) Paragraph (1)(C) shall not apply to impairments that are transitory and minor. A transitory impairment is an impairment with an actual or expected duration of 6 months or less.

### Examples of disabilities include:

- Deafness
- Blindness
- Intellectual disability

- Partially or completely missing limbs
- Mobility impairments
- Autism
- Cancer
- Diabetes
- Multiple sclerosis
- Major depressive disorder or bipolar disorder
- Schizophrenia
- Record of disability such as recovered from cancer or mental illness

## **ODOT Curb Ramp and Pushbutton Training**

We are applying ODOT policies for this training and subsequent ramp and pushbutton inspection work.

ODOT staff have studied and interpreted national standards and guidelines to develop the department's specific requirements including standard drawings, plan development requirements, construction documents and specifications, and inspection forms.

Revisions to ODOT standards, specifications or policy are not changes to the ADA law. If you have questions related to interpretation of national policy, you should direct them to the ODOT personnel identified in this training.

---

### **Activity**

What years did these events occur in Oregon that pertain to the Americans with Disability Act?