

OR99E: MP 20.35 – SW BERG PKWY (CANBY)

Building Better Relationships One Project at a Time

SCOPE OF WORK

- Deep Pavement Repair and Restoration of OR99E
- Install Stormwater Improvements
 - Drywells and added drainage facilities over existing storm sewer
- ADA Curb Ramp Improvements and Sidewalk
- Sign and Signal Improvements
- Railroad Crossing Removal and Crossing Upgrade

Existing Storm Sewer System Failure

- Remove and Replace existing Storm Sewer
 - Cause of failing road - 60-year-old unreinforced concrete pipe
 - Highway would not hold up another year
- Contract Time
 - Contract Suspended for 6 months
 - 365 Days Added

Existing Road Conditions



Water ponding along mainline



Road failing over existing storm sewer



Deep potholes forming

COMMUNICATION AND INNOVATION

- Communication AND Partnership = Success
 - Railroad
 - Schools
 - Fire Department and Public Services
 - Businesses
 - Canby Fair and other Community Celebrations/Events

COMMUNICATION AND INNOVATION

- Accelerated Construction Schedule
 - Aging road and failing storm line
 - Road condition unable to last additional season
 - ODOT Maintenance and K&E joint effort throughout project - potholes
- K&E Proposed Update Traffic Control Plans, ODOT Accepted
 - Signal Shutdown/No Side Street Access for extended periods
 - Increase productivity and decreased time needed to complete project
 - Saved money for both K&E and ODOT



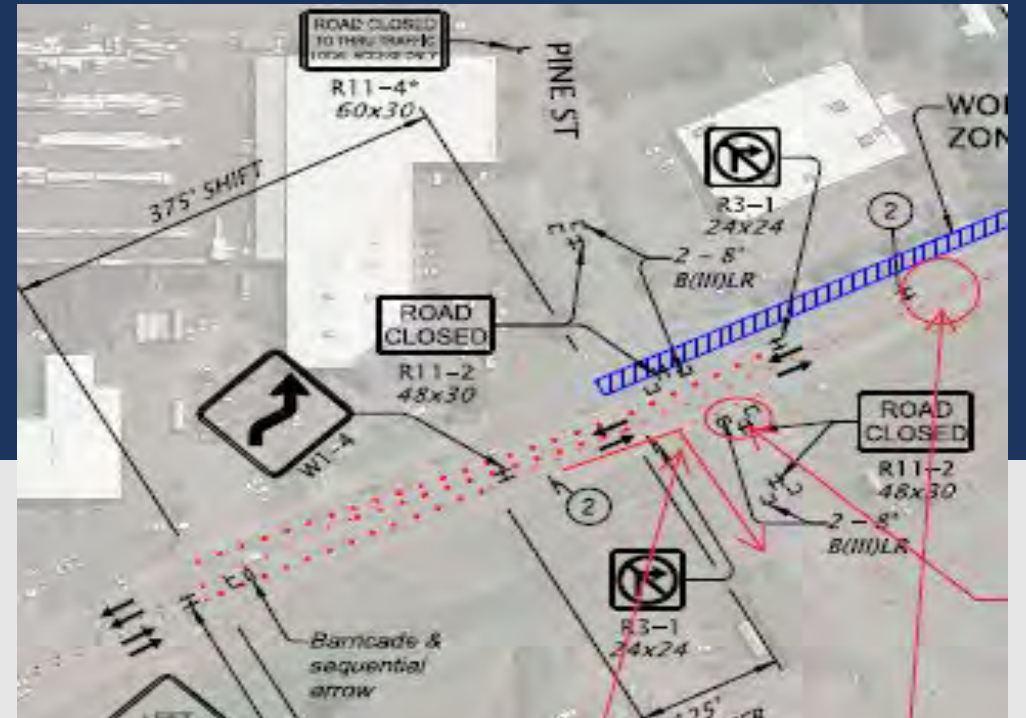
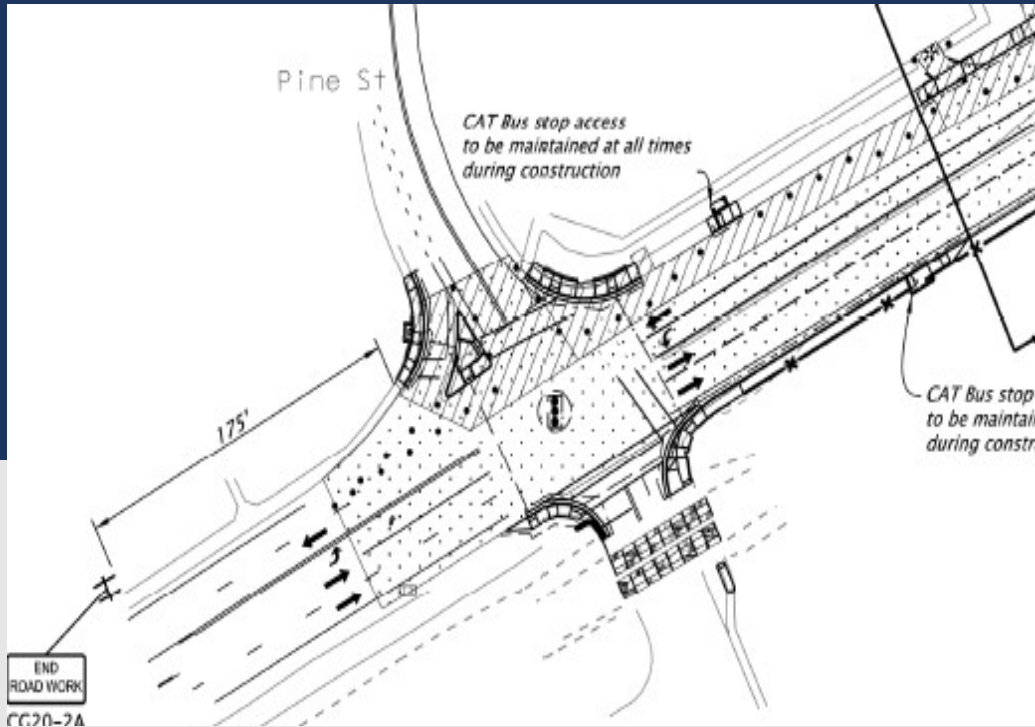
Prior to Repair Lanes in Extremely Poor Repair



Repaired Section of OR99E

TRAFFIC CONTROL

- Contractor Provided/ODOT Approved Traffic Control Plans
- Crossovers with Signal Shutoff
 - RR Notification and Testing
- Allowed Multiple Work Areas
- 4773 tons ACP saved
- Increased Work Zone Safety
- **Communication Crucial**
- Dry Runs with Fire Dept. through work zone
- Flaggers added
- Detours utilized

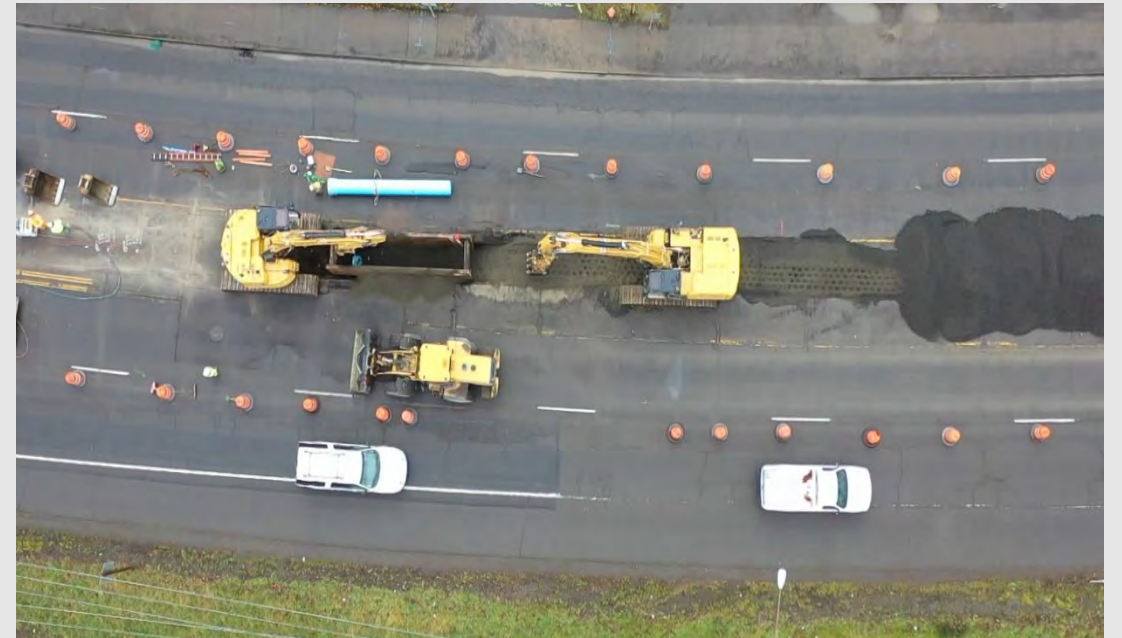


Original Traffic Control Plan

K&E Provided Traffic Control Plan

NEW STORM SEWER

- Redesign completed by Consultant in 6 months
- K&E assisted in the storm sewer redesign
 - Provided constructability comments during design
 - Additional survey
- Offered Solutions during construction to underground utility conflicts



Pipe Work



Drywell Installation

23 drywells at
25' depth



Mainline Pipe Work

1.3 miles Mainline
Storm Sewer



MH Installation

21 PC Manholes
95 Storm MH



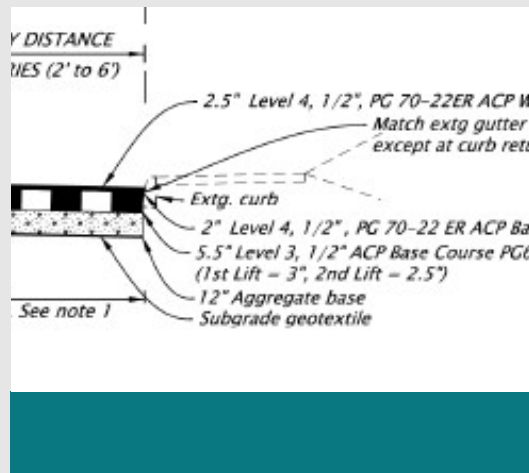
Inlet

78 Inlets
4220' Laterals

5.5" Deep Base Course Lift

- Must be a Fully Contained Area
- Must be Base Course
- Pneumatic Roller used for full depth compaction
- Core Correlation taken
- 10 Additional Cores taken and cut into 3 equal parts for Density Verification throughout mat
 - Top 95.8%, Middle 97.3%, Bottom 96.2%

5.5" Deep Base Lift



Confined Area



Pneumatic Roller
used



Base allowed to
cool overnight

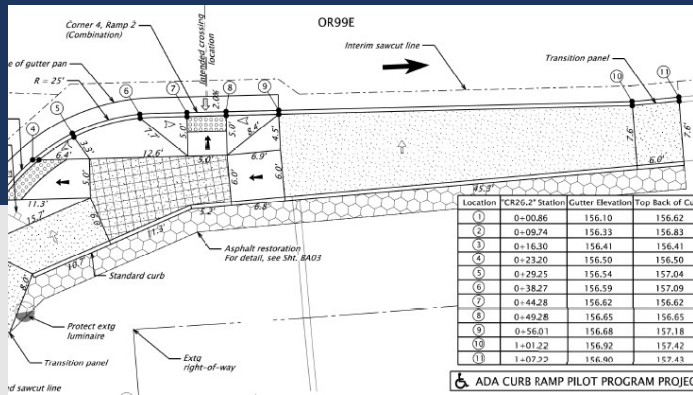
Plan Cross
Section

ADA PILOT PROJECT

- Only 2D Plan given to K&E
 - Only gutter elevation provided
- NO ADA Ramp needed to be removed
 - Only minor corrections required



ADA Project



Plan Impacted War Memorial and Truck Turning Radius

Proposed plan did not impact memorial

Turning Radius adjusted for Truck Exit

Jul 9, 2023 at 7:47:50 AM
SE First Ave
Canby OR 97013
United States

RR Replacement Across Hwy 99E

- UPRR, OPRR, Rick Franklin Construction, City of Canby and Fire Dept
- Full Closure started Thursday ended early Sunday Night
 - Schedule and Communication with Railroad Subcontractor





OUTCOMES

- RR Replacement Across Hwy 99E
- 95% ADA Success Rate, 5% minor fixes
- Successful Project
 - Project 98% Completed
 - 2% held up by others
- Great Relationships
- Canby Community Celebration



QUESTIONS?