








eConstruction


Contract Admin Update
March 2020

Presented by: Vanessa Baker
eConstruction Project Manager
Vanessa.Baker@odot.state.or.us



ODOT's eConstruction Vision

-  Remain secure
-  One source of collaborative truth
-  Accessible to all – Internal & External
-  Standardization
-  Demonstrated return on investment
-  Think beyond the next potential use



eConstruction

Paperless Construction Contract Administration

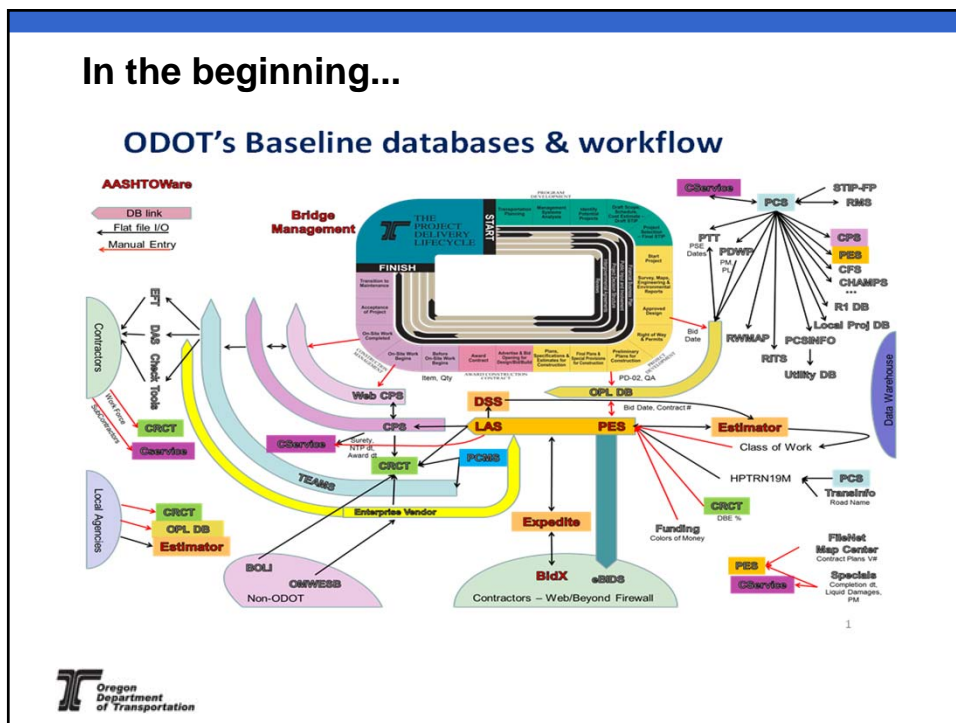
✓

Step 1:
Document
Management
Doc Express

✓

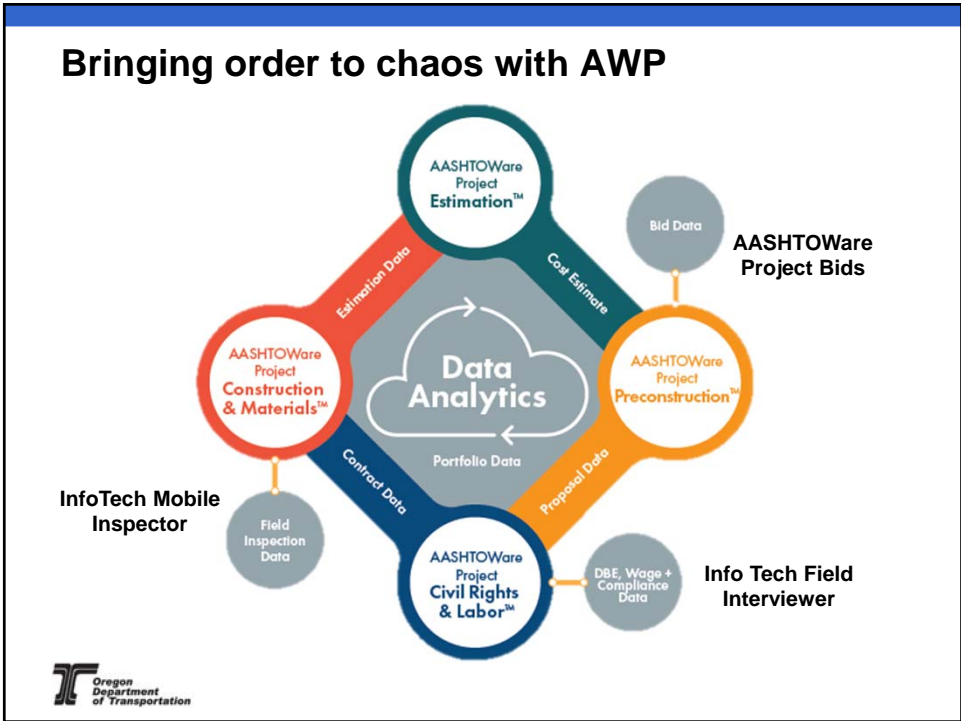
Step 2:
Field Tools
iPads

Step 3:
Data
Management
AASHTOWare



ODOT Systems

<p>Today:</p> <ul style="list-style-type: none"> ▪ Civil Rights Compliance Tracking (CRCT) ▪ Contractor Payment System (CPS) ▪ Lab Information Management System (LIMs) ▪ C-service ▪ Letting and Award System (LAS) ▪ Proposal & Estimates System (PES) ▪ Qualified Products List (QPL) ▪ AWP BAMS/DSS ▪ Flat file entry 	}	<p>Near Future:</p> <p>AASHTOWare Project</p>
---	---	--



AASHTOWare Construction & Materials



- Monitors costs, schedules, inspections, performance, and safety.
- No paper forms
- Mobile devices
- External access granted
- Electronic/digital signatures
- Workflows via a web-based application
- No contractor or consultant software cost

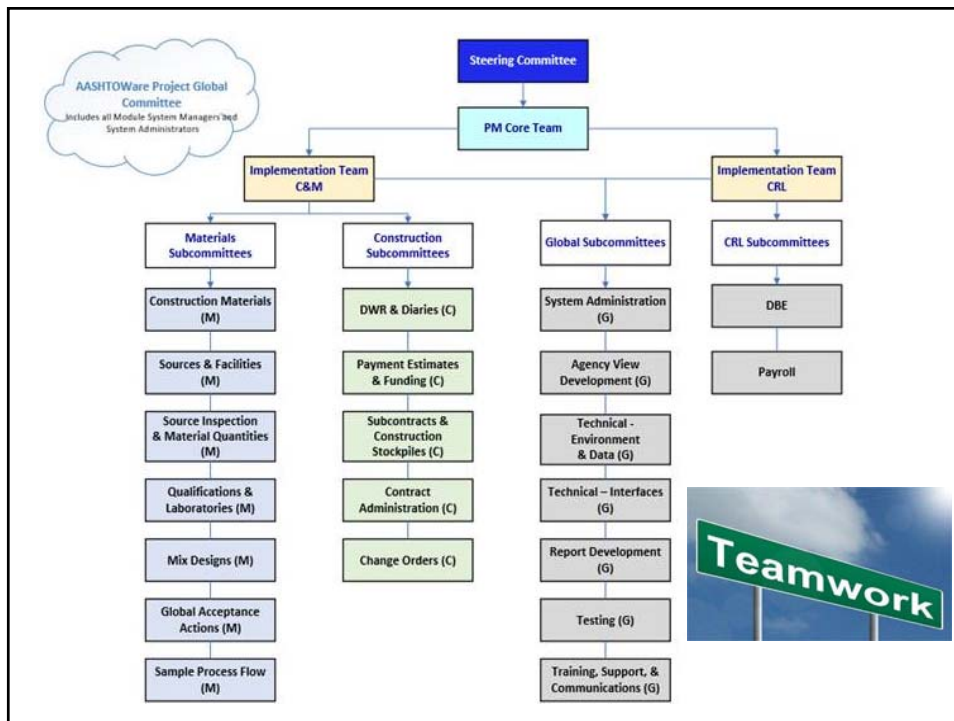
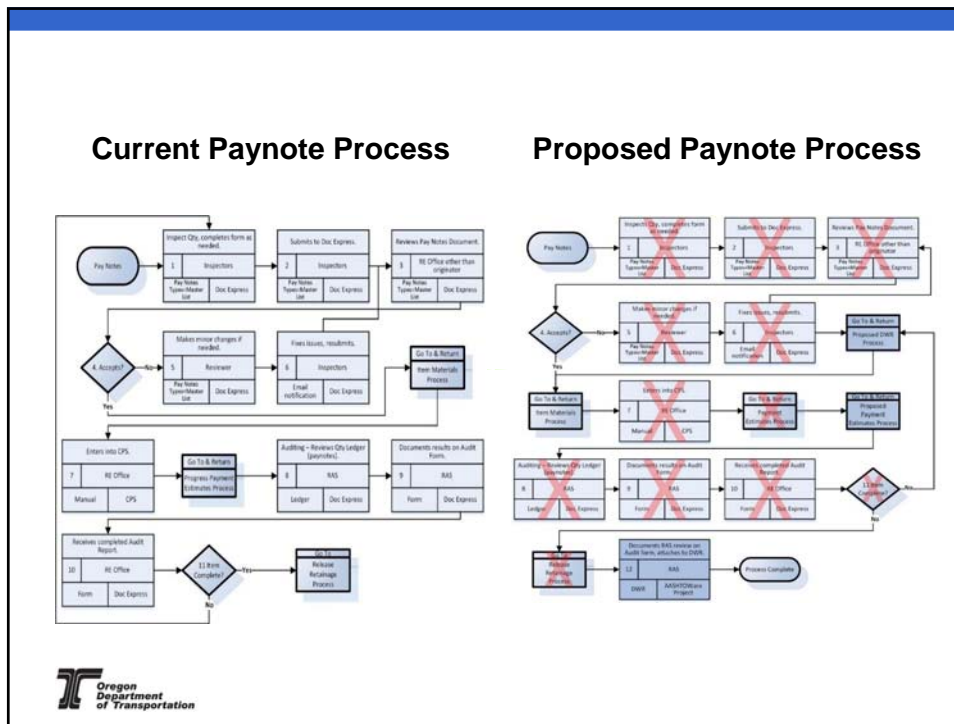


AASHTOWare Civil Rights & Labor



- Receive and process data to meet requirements for civil rights and labor compliance.
- No more attaching dynamic forms
- Reduces the time and effort for reporting, disparity studies, and data analysis (e.g., payrolls).
- External access granted





Join Us!

- **Volunteers for Committees**
 - All disciplines
 - Commitment: 4-5 months
 - 20-30% of time
 - Construction & Materials
 - Civil Rights & Labor
 - Information to be sent to REs
- **Global Committee**



odoteconstruction@odot.state.or.us



What to expect

- Procurement will take the next 6-8 weeks
- Implementation will take 27 months
 - Kick Off: CRL and C&M
 - Planning/Configuration
 - Testing
 - Training
 - Deployment
- Doc Express



