

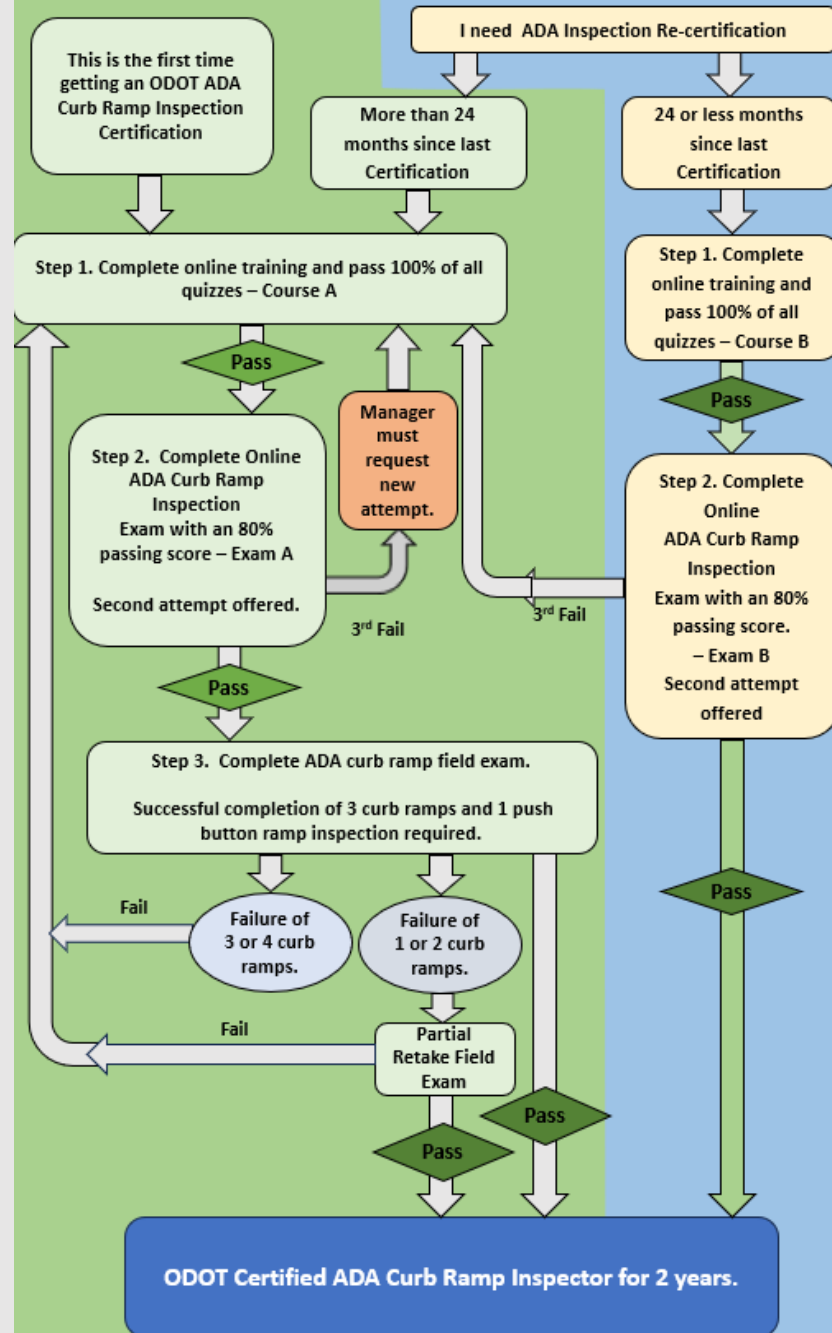
ADA Inspection/Inventory

By Mel Dodd and Cody Bibler

ADA Inspection

Certification and Re-certification

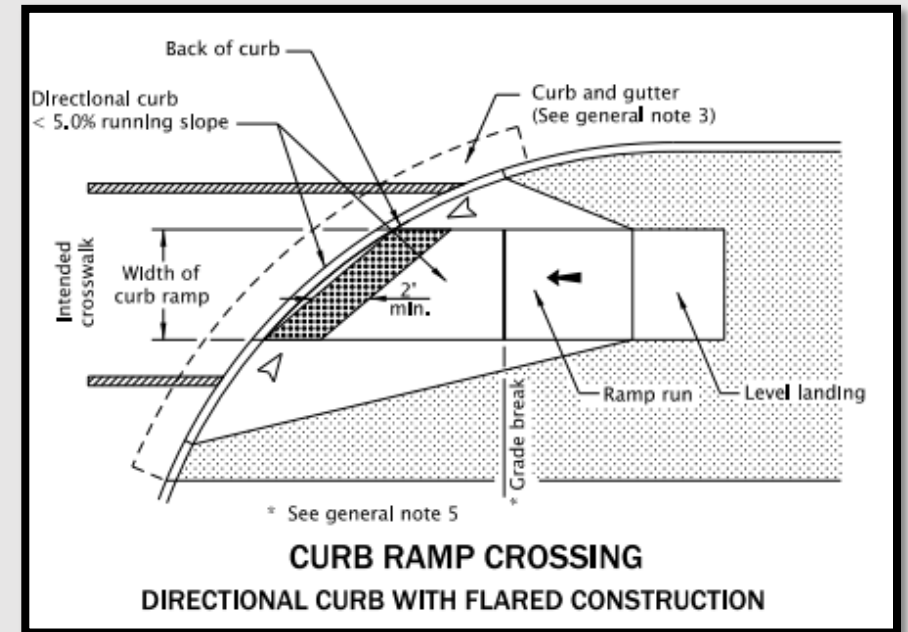
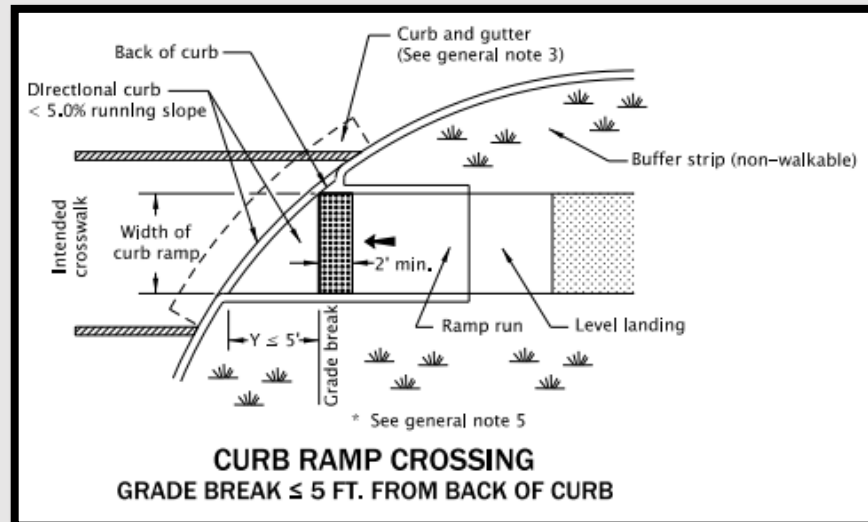
ADA Curb Ramp Inspection Certification Process



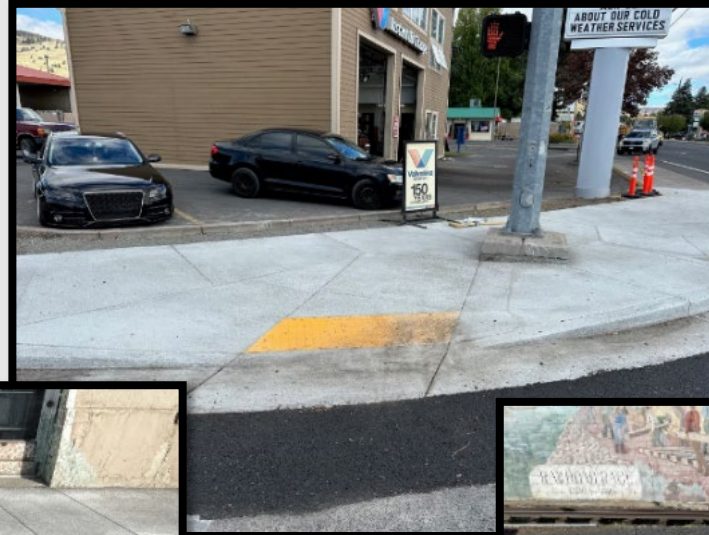
TOP 3 REASONS FOR REJECTION

1. DIRECTIONAL CURBS

- Commonly forgotten ☹️
- Geometric Feature
- Not defined by slopes or grade breaks



1. DIRECTIONAL CURBS



2. FORM FORMAT AND PHOTOS

- Flattened PDFs
- DON'T "Sign" it
- Incomplete construction
- Close up – where are we?

Comment: See also Standard Comments for full list of acceptable comments

Inspector's Signature Date (mm/dd/yy)

Print name clearly Certification No.

Company/Agency Crew No. (ODOT)



3. MISSING RR2/RR3 DATA

- Combination and Parallel forms cannot have missing RR2/RR3 Data
- If 1 adjacent panel to TS is $>4.9\%$, inspect both.
- If the 2nd does not exist, UD.



HONORABLE MENTIONS

- Functional Condition – No DE
- Non-certified Inspector
- Applying Design Concepts in Inspection
 - RD21-01A – Warp rates
 - “Blended Transition” vs. Ramp style BT
 - “End of Walk” vs. Ramp style EOW

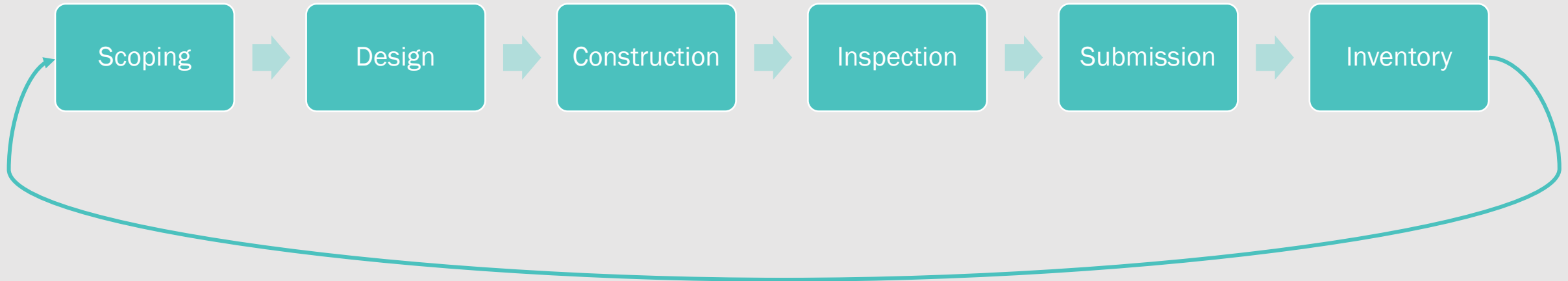
NCST SMARTSHEETS

- [2023 NCST](#)

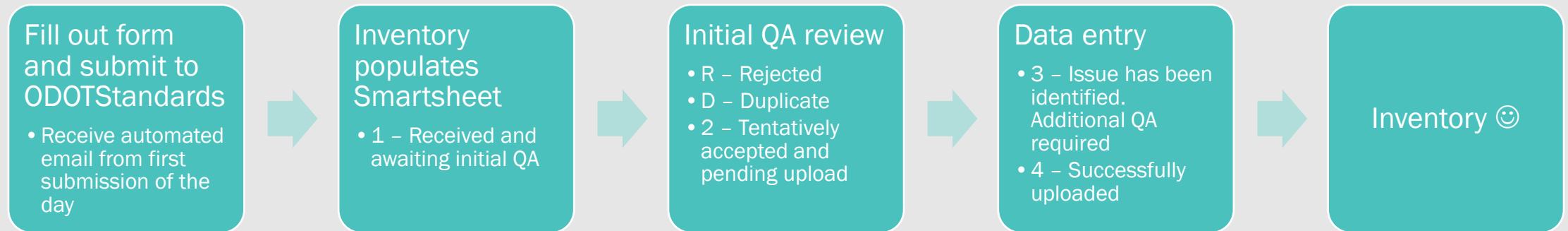
- Data year: 12/22 - 9/30/23

- [2024 NCST](#)

- Data year: 10/1/23 – 9/30/24



FORM SUBMISSION



Notifications are sent:

- every status change
- when a comment is added to the row
- when someone @'s
- every week when rejected

-
- New forms, submittal guide, inspection guide June 2024
 - TransGIS and FACS-STIP up to date as of 12/23
 - Use FS for more information [FACS-STIP](#)
 - How to best get in contact?
 - Office hours, in-person, webinar, distribution, etc???